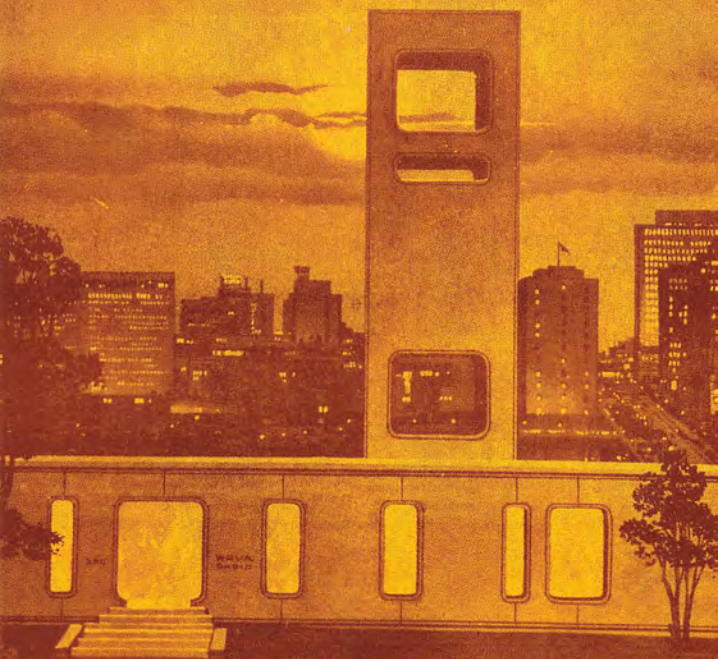


WRVA

RICHMOND, VIRGINIA

1140 KHZ

On Your AM Dial



The 50,000 Watt Voice of Virginia

Since November 2, 1925

We are pleased to verify with this QSL
card your reception of WRVA Radio
at 9:59 Am EST EDT
on 1-31-95

WRVA is a 50 KW-U, Class 1B, DA1
facility operating at 50,000 watts and
2 towers, with one directional
pattern full-time.

Chief Engineer 

Date MAR 3 1995

Philip J. Greenspan
101 Forge Lane
Marshfield, MA 02050