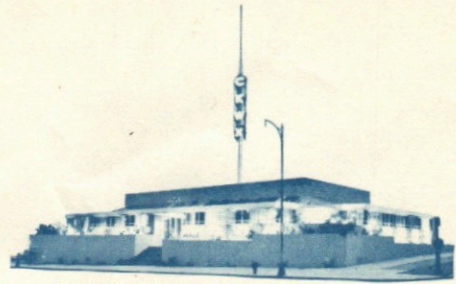


CKWX

radio ltd.



1275 BURRARD STREET VANCOUVER 1 CANADA TELEPHONE TAtlow 5131

January 20, 1958

Mr. John Sampson,
7940 Pacific,
OMAHA, Nebraska.

Dear Mr. Sampson:

We are pleased to acknowledge your report of reception on 1130 kilocycles of CKWX, Radio British Columbia, in Omaha Nebraska on December 22nd, 1957. The details supplied by you in your report coincide with our station log for that day and we are glad to verify your reception of this station.

CKWX broadcasts round the clock, throughout the week, with the exception of a five-hour period between Sunday midnight and 5:00 a. m. Monday morning when engineering maintenance is carried out on our 50Kw Continental Electronics Transmitter.

Enclosed you will find a pair of day and night limitation contour maps, which were produced at the time of our move from 980 and 5Kw, to 1130 and 50Kw, hence the inclusion of the 980 contours.

The pattern is obtained by the use of a two-tower array, both towers being 238 feet high, spaced 238 feet, and lying in a North-West - South-East line approximately. The towers are fed 102 degrees out of phase. The North-West tower is fed 13.4 Kw while the South-East tower gets 36.6Kw.

We trust this information answers your questions to your satisfaction, and we hope you will continue to hear often from CKWX, Radio British Columbia.

Sincerely yours,

Laurie Irving
Laurie Irving, Director of Special Events.

AN "ALL CANADA" STATION

*Now 1130
50,000 Watts* DIAL 980

Irving