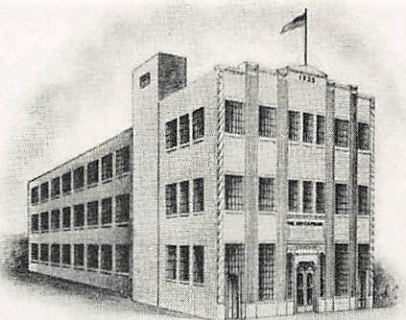


A. M.
1000 Watts — 1070 K. C.



F. M.
37,000 Watts — 95.5 MEG.

WHPE - WHPE - FM

Owned and Operated by
THE HIGH POINT ENTERPRISE, INC.

HIGH POINT, N. C.
March 1st, 1949

Mr. S.R. Morss
R.R. No. 3
Bradford, Mass.

Dear Sir:

This will verify your reception of WHPE ~~& WHPE-FM~~
at Bradford, Mass. on February 14th, 1949.

Your comments on quality, signal strength and
general reception conditions were greatly appre-
ciated.

Thank you kindly for your interest and correspondence.

Yancey Cecil

Chief Engineer
WHPE & WHPE-FM

MEMBER
N. A. B. — F. M. A.
N. C. A. B.

National Sales Representative **COX and TANZ**
NEW YORK PHILADELPHIA CHICAGO

