





COULEURS ET LUMIERE DE FRANCE
75 - En survolant PARIS
Maison de Radio-France
(Architecte : Henri Bernard)
La Seine et la Tour Eiffel
10/5682

TDF a le plaisir de vous confirmer
votre rapport d'écoute

FRÉQUENCE : 15360 KHZ

BANDE : 19 meter

DATE : October 18, 1980

HEURE GMT : 1705 - 1750

et vous en remercie



Programme
Radio France Internationale

Éditions d'art Yvon PARIS

30, Av. Jean-Jaurès - 94 - Arcueil - © by S.P.A.D.E.M. - Imprimé en France.

78

QSL



TéléDiffusion de France

Mr. Carl Mann

BP 9516 PARIS FRANCE





COULEURS ET LUMIERE DE FRANCE
75 - PARIS

Le Boulevard Périphérique, la Place de la
Porte Maillot et le Centre International de
Paris - (Palais des Congrès)

(Photo aérienne *yvon*)
10/11432

TDF a le plaisir de vous confirmer
votre rapport d'écoute

FRÉQUENCE : *17860*
21515

BANDE : *16 meter*
13 meter

DATE : *Feb. 3, 1980*

HEURE GMT : *1700 - 1735*

et vous en remercie

Programme

Radio France Internationale

QSL



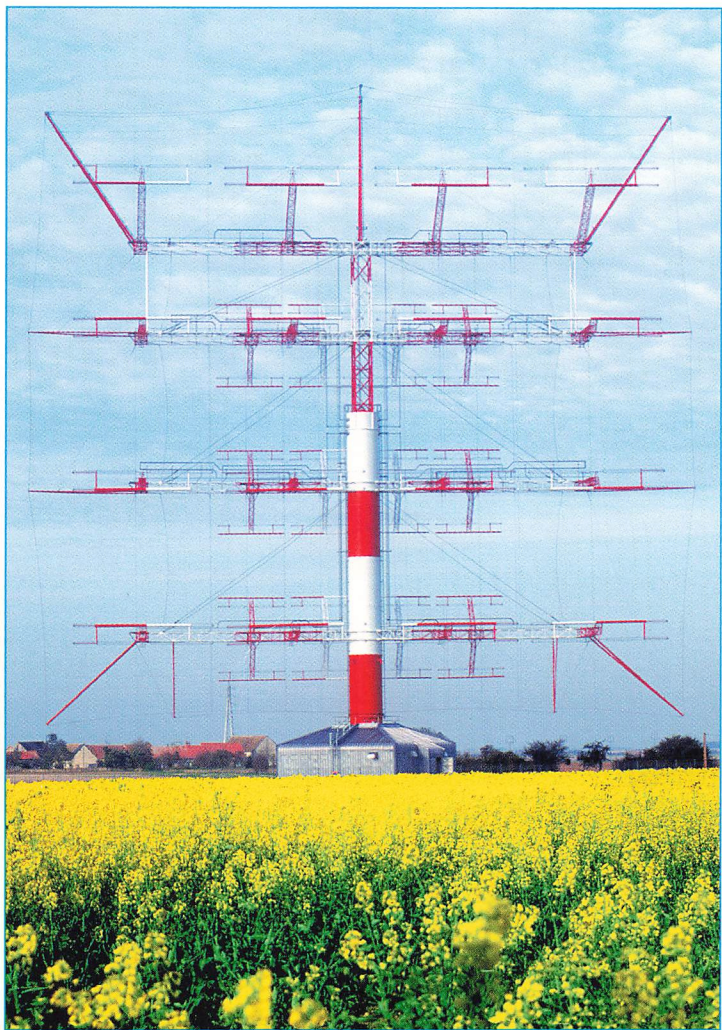
TéléDiffusion de France

Mr. Carl Mann

* Éditions d'art *yvon* PARIS
30, Av. Jean-Jaurès - 94 - Arcueil - © by S.P.A.D.E.M. - Imprimé en France

78

BP 9516 PARIS FRANCE



ALLISS - ANTENNE TOURNANTE AVEC EMETTEUR INTÉGRÉ -

conçue en collaboration avec THOMSON CSF



Ondes décamétriques
BP 518 - 92542 MONTROUGE

TÉLÉDIFFUSION DE FRANCE confirme
votre rapport d'écoute et vous remercie

fréquence (kHz) : 11615
bande (m) : 25 m
date : 28/11/96
UTC :
station : 12H00-13H00

ISSOUDUN (FRANCE)

Programme : Radio France Internationale
BP 9516 PARIS

QSL

M. MANN CARL

6177 SOUTH
139 th AVENUE CIRCLE
OMAHA - NEBRASKA
68137 - U.S.A.



PARIS - ICI PARIS - ICI PARIS -
R. F. I.
S - ICI PARIS - ICI PARIS - ICI P



670

Mr. Carl Mann # 711
5777 Ridgeway Drive SW
Cedar Rapids, Iowa 52404
U.S.A.

PAR AVION
BY AIR MAIL



Public Relations

Paris, May 1982

Mr. Carl Mann
5777 Ridgeview Drive SW
Cedar Rapids, Iowa 52404
U.S.A.

Dear Mr. Mann,

Last year, upon learning about the Fiftieth Anniversary celebration of French shortwave broadcasting, you were kind enough to send us your best wishes.

As a souvenir of our Fiftieth Anniversary, we would like to offer you a gift from Radio France Internationale. This is a bronze medal that you will find enclosed. You will note that the front of the medal represents France transmitting to the world outside. The back of the medal represents the world receiving the voice of France.

We offer you this medal, along with our sincere thanks for your fidelity to the French shortwave service throughout the years, and for celebrating with us, through your warm wishes, fifty years of French shortwave broadcasting.

Sincerely,

Margot Rick





The Société Nationale de Radiodiffusion "RADIO FRANCE" was created January 1975 as a consequence of the law passed in August 1974 when the O.R.T.F. was dissolved and replaced by seven independent organizations.

"RADIO FRANCE" has four national networks broadcasting on LW, MW, and MF while the fifth is dedicated to the foreign service.

Known as RADIO FRANCE INTERNATIONALE it is devoted to French speaking listeners abroad as well as to French citizens living outside the borders of France.

Allmost all the programs of RADIO FRANCE INTERNATIONALE are broadcast on SW this being the only way to reach audiences beyond the frontiers.

RADIO FRANCE INTERNATIONALE uses 20 SW transmitters located in the region of Allouis and Issoudun, 12 of which are 100 kW transmitters and 8 of which are 500 kW transmitters used by Télédiffusion de France for broadcasting abroad.

Unlike its leading rivals, RADIO FRANCE INTERNATIONALE does not, at the present time, have relay transmitters situated outside France.

RADIO FRANCE INTERNATIONALE transmits daily 17 and a half hours of continuous broadcasts for its African and Indian

Indian Ocean listeners. These broadcasts are mainly in French with the exception of one hour a day reserved for the English-speaking listeners, "Paris Calling Africa". One half of these broadcasts consist of programs taken directly from the national networks and which are of deep interest to French citizens living abroad. The other half is composed of broadcasts produced specifically for the foreign French-speaking listeners.

Central and East Europe receive 15 hours of broadcast each day, in French. The program taken from the national network constitute a larger part of these broadcasts than they do in those transmitted to Africa.

Towards North America and the West Indies, RADIO FRANCE INTERNATIONALE works as a relay of the home-service France-Inter during five hours daily.

RADIO FRANCE INTERNATIONALE also transmits each day a one hour program in German broadcasted on SW, on two frequencies, on MW by using the transmitter of Strasbourg and in FM from a french transmitter located in Berlin.

RADIO FRANCE INTERNATIONALE transmits towards Spain also, for one hour a day, in Spanish, on MW from Toulouse and on SW in two frequencies from Allouis-Issoudun.

And finally, a daily program in Portuguese is beamed to Portugal exclusively on SW on two frequencies.

Besides broadcasts transmitted abroad, RADIO FRANCE INTERNATIONALE is producing a series of programs, mostly in foreign languages for listeners living in France. These programs for foreign workers

are broadcasted from Monday to Saturday, on MW in : Arabic, Cambodian, Italian, Laotian, Portuguese, Serbo-Croatian, Spanish, Turkish, Vietnamese and French (for French-speaking Africans). These programs are intended to keep a cultural tie with the native country and facilitate the adaptation of their listeners into the French way of life, in particular thanks to a better understanding of French employment legislation.

RADIO FRANCE INTERNATIONALE also insures radiophonic cooperation with 17 French-speaking African radio stations. This cooperation is expressed by the daily dispatching of news transmitted instantly by two SW service broadcasts, or, when it is not matter of urgency, simply on tape, accompanied by a written document, and sent by plane.

Cultural and educative programs, directed each week by plane, also insure valuable cooperation with 22 African stations. They include an "Interafrican Theatre Competition", a "Best Short-Story Competition" as well as documents on tapes or records which constitute a most interesting anthology of African culture.

On a wider scale, RADIO FRANCE INTERNATIONALE's transcription service produces programs for more than 100 countries to insure the diffusion of French culture and civilisation.

Finally, RADIO FRANCE INTERNATIONALE acts as a press agency for the French Embassies abroad, thanks to the radio teletype system of the Ministry for Foreign Affairs which dispatches 5 news bulletins and chronicles throughout the world in French, Spanish, Brazilian, German and English,

which may be used by the foreign press and radio.

RADIO FRANCE INTERNATIONALE is also responsible for programs produced in Polish for the French listeners living in the north of France, Belgium and Great Britain, familiar with this language.

But for all those who outside France want to keep in touch with France, and for all the French-speaking people of the world, RADIO FRANCE INTERNATIONALE, by its SW broadcasts, constitutes the needed bond of friendship.

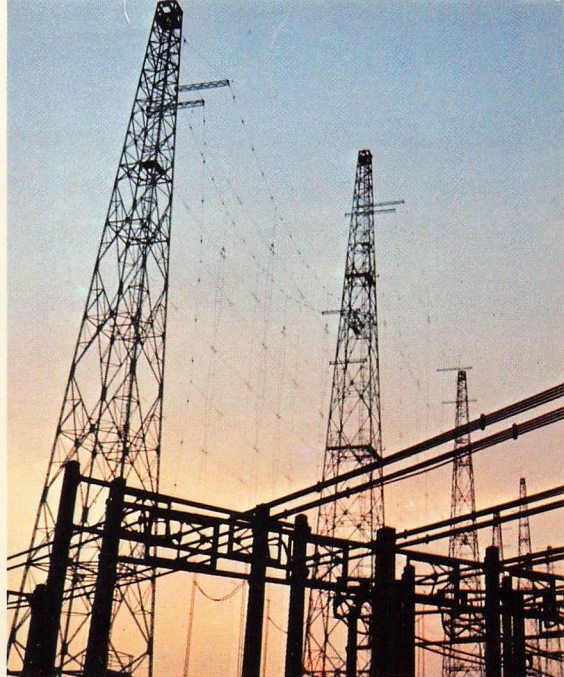
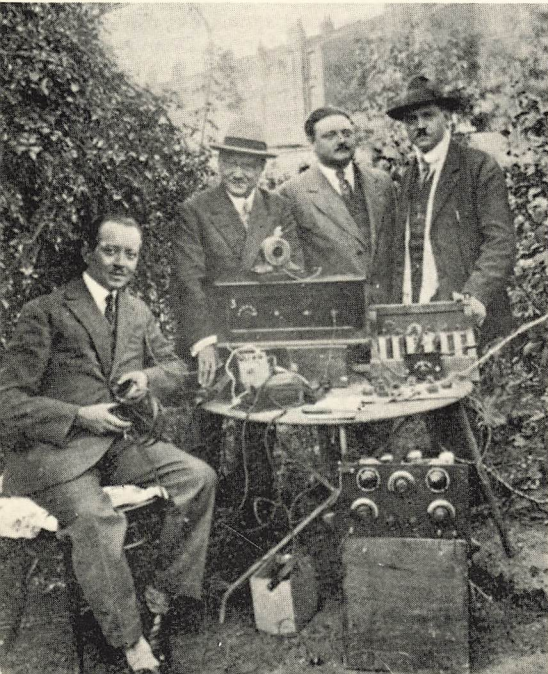
For current program schedule, write to :

RADIO FRANCE INTERNATIONALE

B.P. 9616 - PARIS 16

F R A N C E

CINQUANTE ANS D'ONDES COURTES



1931 à 1981

- Le poste émetteur à ondes courtes
permettant de recevoir et de retrans-
mettre à la station de Radio P.T.T.
Nord l'émission provenant d'un bal-
lon.

- Feeders et Antennes

TDF a le plaisir de vous confirmer
votre rapport d'écoute

OSL



TéléDiffusion de France

FREQUENCE : 21620 KHZ

BANDE : 13 meter

Mr. Carlmann

DATE : September 5, 1981

HEURE GMT : 1605 - 1655



et vous en remercie

Programme

Radio France Internationale

BP 9516 PARIS FRANCE

(12 92 5038*)