



Copenhagen, 1/31, 1958

DEAR LISTE

Your report of 1/12 concerning our broadcast on 9520 kc/s, 31.51 m, 50 kw, call letters OZ.FS, at 200-220 GMT on 1/12 1957, beamed to North America is hereby verified.

Sincerely yours,

*Olle Jensen*  
SHORTWAVE DEPT.

January 31st, 1958.

Dear Sir,  
Thank you very much for  
your report. Enclosed  
please find a schedule of  
our programs beamed to  
North America.  
We hope to be able to give  
you many enjoyable hours  
with your radio, and we  
should be very glad to  
have reception reports  
from you from time to time.

Yours sincerely,

*Julie Jensen*  
DANISH STATE RADIO  
SHORTWAVE DEPT  
COPENHAGEN  
DENMARK

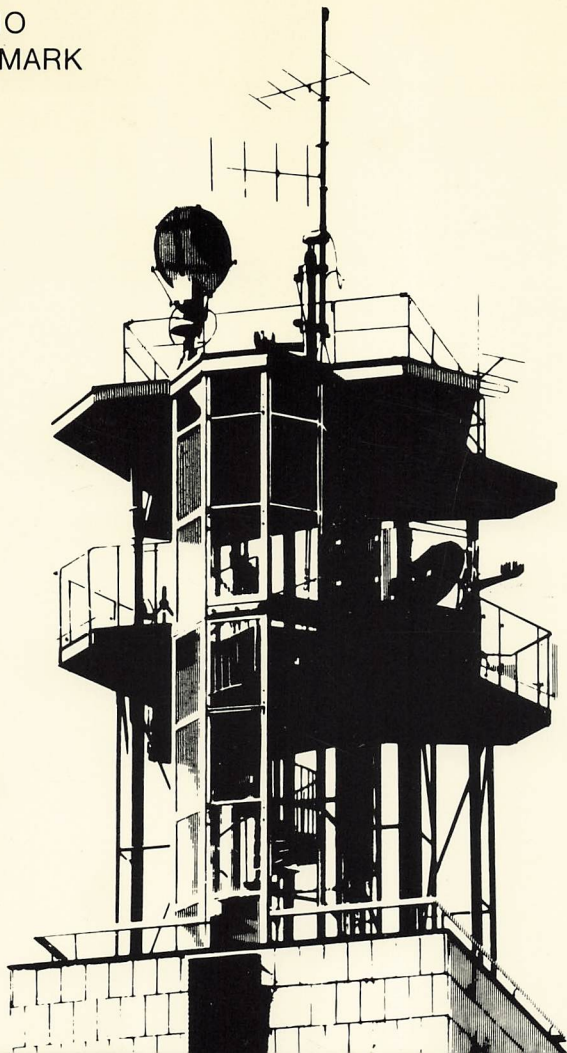
STATSRADIO  
AF  
FONN  
I  
N  
COPENHAGEN,  
DENMARK

3702 So. 17,

Omaha 8, Nebraska,

U.S.A.

RADIO  
DENMARK



Radiohouse Aerial Tower  
Copenhagen, Denmark.

1980

6F-16

Mr. East Mann

Your report on our broadcast  
Date *March 9*, Time *00<sup>00</sup>* GMT  
Frequency *15165* kc/s has been  
checked and is hereby verified.

Sincerely Yours

*Bent Bang*  
Radio Denmark.





SCHEDULE APRIL 6th - SEPTEMBER 27th 1980

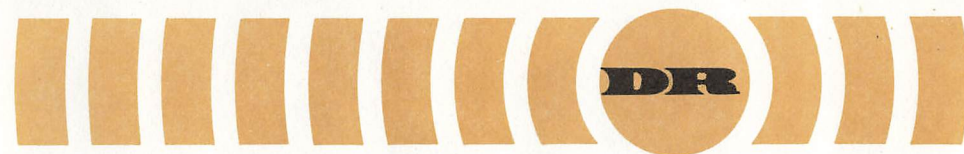
All broadcasts in 15165 kHz, 19,78 metres.

<u>Time GMT</u>	<u>Direction</u>
09.00-09.55	Southwest Europe Mediterranean
x) 10.00-10.50	Greenland Pacific
11.00-11.55	Far East Australia
12.00-12.55	South Asia Persian Gulf
13.00-13.55	Eastern Northamerica Greenland
x) 16.30-17.30	Greenland Pacific
18.00-18.55	Northamerica Greenland
19.00-19.55	East Mediterranean East Africa
x) 20.00-20.55	Southwest Mediterranean West Africa
x) 21.00-21.55	Northamerica Greenland
22.00-22.55	South America West Africa
23.00-23.55	Western Northamerica Greenland
x) Relaying the Danish Home Service	

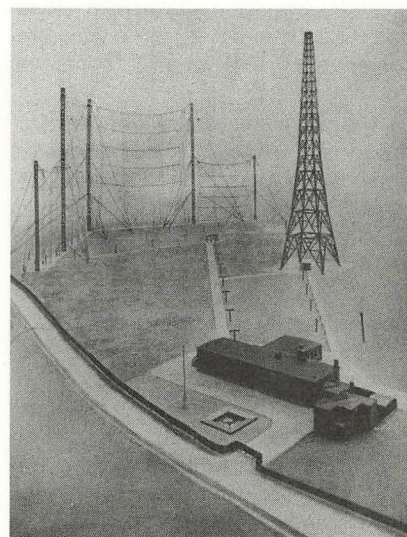
Thanking for your interest in Radio Denmark we hope that you still once in a while »hang on« to our broadcasts and remember that we are still »hiding« in the air, and we also hope that we one day will be able to get perfectly through to you and to the rest of the world.

Sincerely your  
RADIO DENMARK  
SW-DEPARTMENT  
1999 COPENHAGEN V.

# RADIO · DENMARK



## The Shortwave Department of Radio Denmark and The Herstedvester transmitter



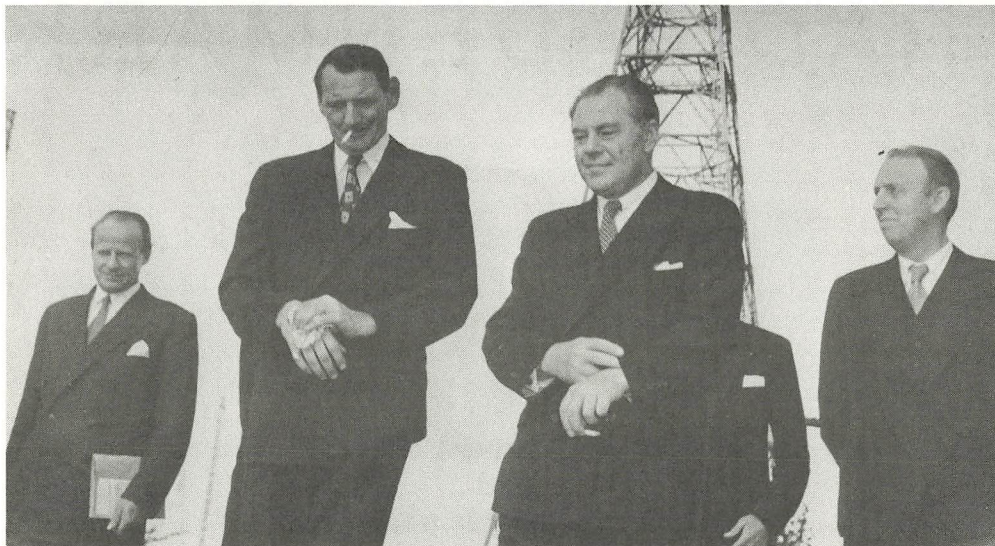
A model of the Herstedvester transmitter as it was shown in 1948.

The name Herstedvester might not mean a lot to non-Danes. Properly speaking it is a little village some 25 Kilometres West of Copenhagen. But it is also the location on which the Shortwave Transmitter of Radio Denmark is situated.

The Herstedvester Transmitter - with an effect of 50 kW - replaced a weak 6 kW station in 1948. Radio Denmark was ready to conquer the world!

Broadcasts were commenced in Danish and English and later in Spanish. Presently however the voice of Denmark grew weaker and weaker. Shortwave stations form all over the world grew more and more powerful, and around 1960 plans about a new and stronger transmitter began to arise.





King Frederik IX and Prime Minister Hans Hedtoft at the official opening of the transmitter in Herstedvester October 1st 1948. (Center).

One transmitter, and that of a strength of only 50 kW, is obviously inadequate to meet the demands of shortwave broadcasting today. The Shortwave Department is well aware of this and is doing its utmost to get the situation improved.

Steps have recently been taken towards the projection of two new 500-kW transmitters, but even if everything is quickened as much as possible, we have no hope of their being fit for transmissions until 1983.

In the postwar years people had a great urge to get away from the restrictions which followed upon the war, and the emigration wave increased considerably. It was felt in Denmark that one of the main functions of a shortwave radio must be to keep in touch with these Danes - to provide a connection between them and their home country. Furthermore, Denmark has always been a seafaring nation, her ships plying the seven oceans of the world. Here too, was a potential field of listeners.

For many years the facilities of this department were utilized by natives of the two remotest parts of Denmark: The Faroe Islands and Greenland, but these transmissions were terminated when these regions established their own broadcasting stations.

Since the programs are mainly for Danes abroad the contents of our programs are Danish news in particular. About 50 % of our total transmission time consist of news of local kind and special programs for seamen. The rest is divided between short interviews, sports, lectures, request programmes and other musical features.

Many listeners ask us about the reason why we have no programs in foreign languages, and the staff of Radio Denmark certainly understand their disappointment. The problem is that The Danish Radio Council in 1969 announced that all broadcasts from Radio Denmark should be in Danish. We have tried several times in the past few years to alter that decision,

but in vain. Still we have not given up, and we are hoping that we shall be back with at least a program in English in the future. We feel that such a program would equalize us with other nations in the search of international understanding.

If you once in a while however should like to find our station - and identify it by the English announcement - we should certainly appreciate your report and verify it by

QSL. At the same time we should like to draw your attention to the fact that we at the moment have no means to provide our listeners with pennants and stickers, but that too is something we hope to change some day.

Eventually we might add that since our programs are mainly for our Danish listeners we cannot include foreigners on our mailing list, but this schedule will be sent to you by request.

### THE DANISH SW-STATION technical Data

#### Station:

The Danish SW-station, which is situated at Herstedvester about 10 miles from Copenhagen, is built by »Standrad Elctric«. Started regular service in October 1948.

#### Technical details:

Effect: 50 kW

Effect consumption: 200 kW

Valves: Watercooled

Modulation: Ordinary class B-modulation, with inserted compressor.

Wavelength : 19,78 m - 15.165 kc/s

#### Aerial:

Turnable log-periodic antenna



"The DX-Window" went into the air in the late sixties. It was a program with news and tips for listeners all over the world and was made in cooperation with the Danish Shortwave Club International. When it stopped, listeners could obtain a "DX-Window Memory Card", now a rarity among collectors.