

DURHAM LIFE INSURANCE COMPANY

RADIO STATION WPTF

RALEIGH, N. C.

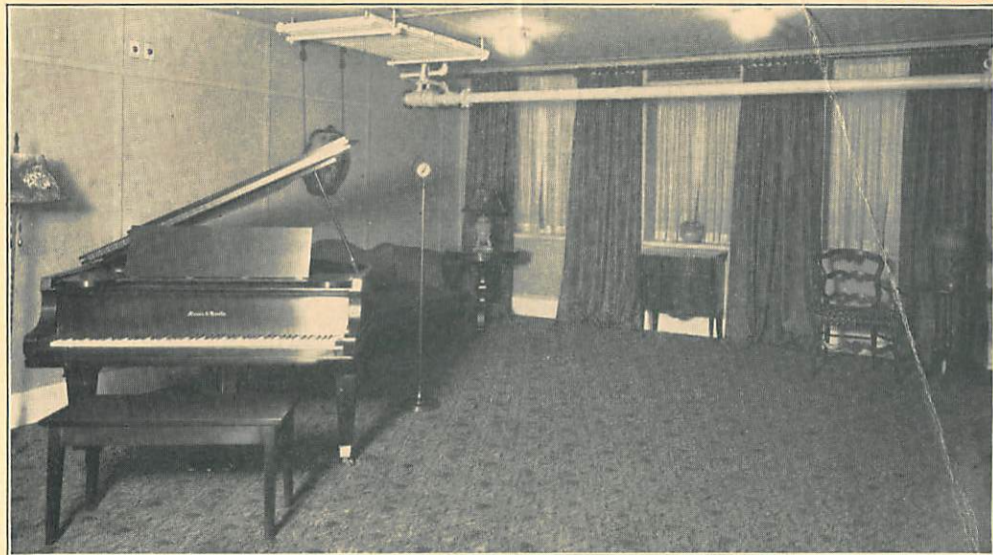
WE acknowledge receipt of your communication, advising us that you are enjoying the broadcast by Station WPTF. We are always delighted to know that this service is being enjoyed. Our musical program will be continued each week. We would be glad to hear from you from time to time, as to the reception of our broadcast.

Yours very truly,

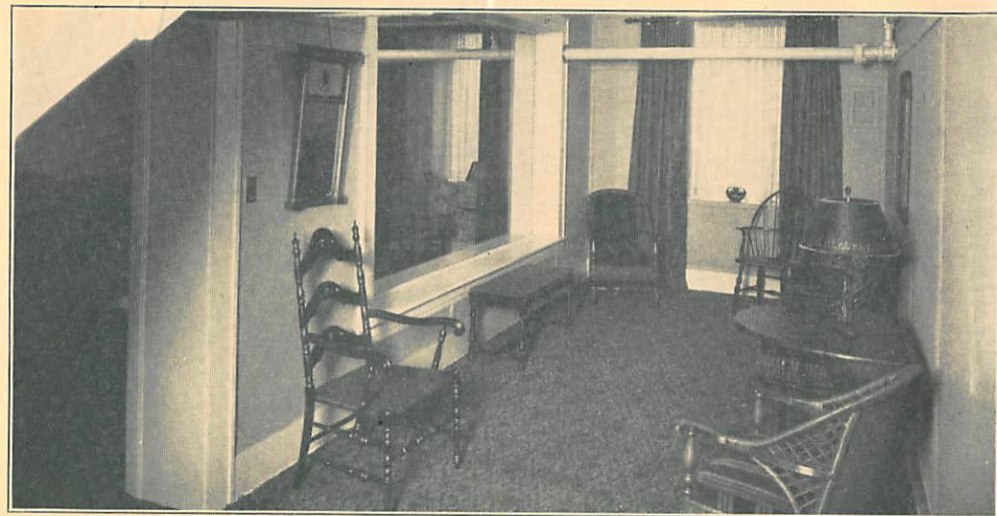
DURHAM LIFE INSURANCE COMPANY

WE PROTECT THE FAMILY

BROADCASTING STATION WPTF



MUSIC ROOM



RECEPTION ROOM