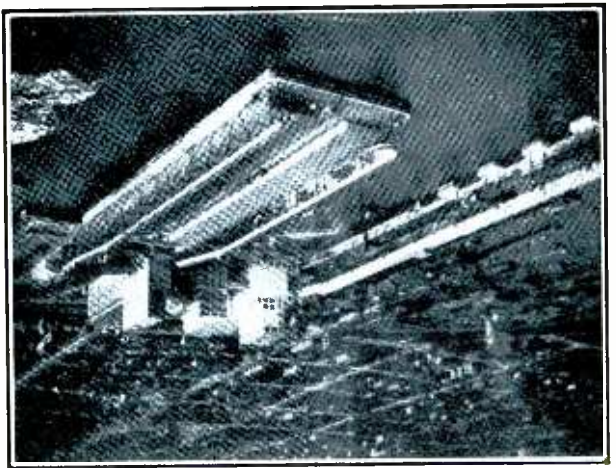
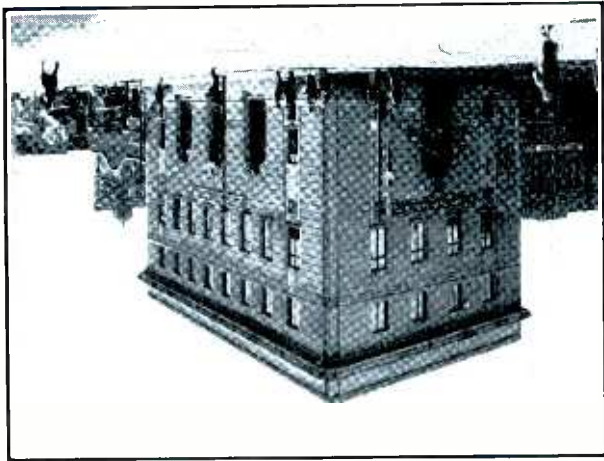


and flour shipments passing through the Western route are handled by these properties. HIS is an aeroplane view of the Vancouver Terminal Elevator, the Pacific Terminal Elevator, and the Alberta Pacific (Lapointe) Pier at Vancouver. The Vancouver terminal elevator is owned by The Alberta Pacific Grain Company and the Pier is operated by a subsidiary company—The Alberta Pacific Corporation, Limited. The bulk of Canada's grain

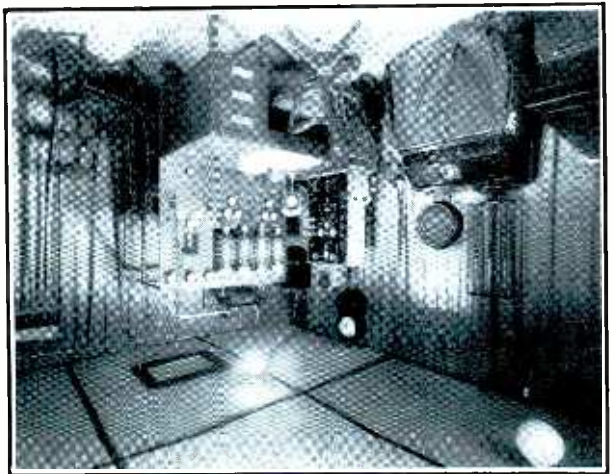


largest privately-owned grain handling organization. The main studio of Radio Station CKIC is located in this building. Visitors to Calgary are always welcome at the Alberta Pacific Grain building which is one block north of the Canadian Pacific depot. J. R. Foster, chief announcer of CKIC is shown in the inset.

THE ALBERTA PACIFIC GRAIN BUILDING at Calgary, Alberta, home office of Canada's



An interior view of the Alberta Pacific Radio Station CKIC, at Red Deer, showing the line amplifier microphone control panel at the left, and in front of the desk the 2,000 watt transmitter panel, on which can be identified behind the small window, the two 50 watt power amplifier tubes, and on the front of the panel the four 1,000 watt tubes. In an adjoining room is located the motor generator equipment, batteries, work shop and test rooms. The location of this plant is the highest spot in the vicinity of Red Deer, Alberta, and the huge 200-foot steel towers supporting the antennae may be seen for miles in all directions. These towers are almost 4,000 feet above the sea level.



Main Studio CKIC, Alberta Pacific Grain Bldg., Calgary, Alta.
 Radio Station CKIC.
 Radio Station CKIC, owned and operated by The Alberta Pacific Grain Company Limited, acknowledges with thanks your kind contribution. We shall be pleased to hear from you frequently in the future offering us comment concerning our programmes.