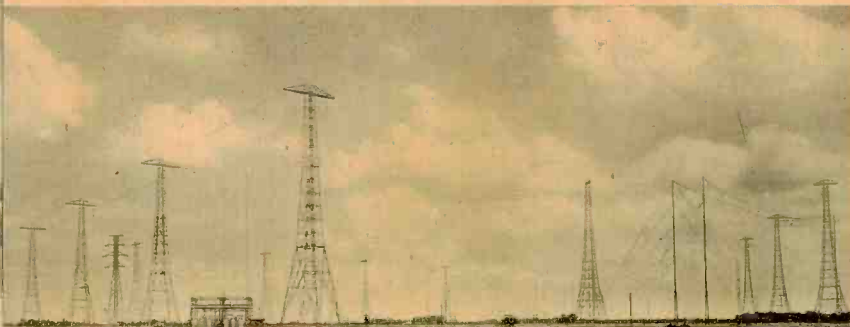
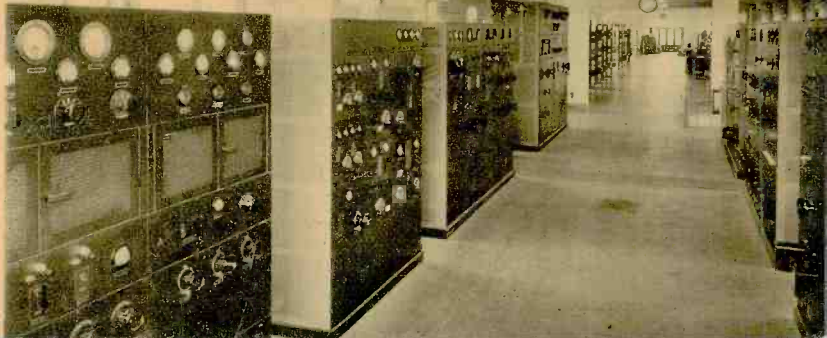


RADIO TOKYO



LEFT—View of directional acrials, of which the left side is directed to the West Coast of North America, those in the rear to Europe and those to the East Coast of North America on the right side.

RIGHT—50 kilowatt transmitters.



Formosa.	0240-0300	"	"	News, Entertainment.
	0300-0400	"	"	News, Market Quotations.
	0650-0730	J V N	10660	News, Entertainment, Drama Etc.
	0900-1300	"	"	

KOKUSAI-KA
(Overseas Section),

NIPPON HOSO KYOKAI
(The Broadcasting Corporation of Japan),

ATAGOYAMA, TOKYO.

RECEPTION VERIFIED

NOV 15 1988

Mr. Kermit Geary

Dear Listener,

We have the pleasure in confirming you the receipt of your letter dated *Sept. 7* giving us your report on reception of our Overseas Programme on *Sept. 6-7* on wave *DL 11.89*. We are very glad to find them to be very helpful and useful to us.

As we are always eager to give you satisfaction, and are studying how to improve the equipment and programme, we shall highly appreciate your further co-operation.

Now we are very glad to tell you that our advance programmes are ready for distribution. They will be distributed regularly to those who are so interested in our broadcast and who are so kind as to give us reports of reception as well as their frank advice frequently.

Enclosed ~~by other mail~~ you will find ~~a~~ *Many thanks for filling up the questionnaire* questionnaire and reception reports, which, we hope, you will be kind enough to fill up in reporting further to us in detail of your reception of our programmes. Please answer us freely in English, German, French, Spanish, or Portuguese at your choice.

Hoping that we are not putting you to too much trouble, and thanking you in advance, we are,

Yours very truly,

KOKUSAI-KA,
NIPPON HOSO KYOKAI

