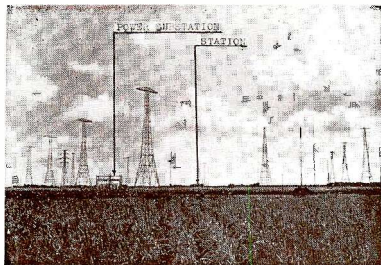


OVERSEAS BROADCAST

Nazaki Station Longitude 138°51'00"E
 Latitude 36°10'44"N

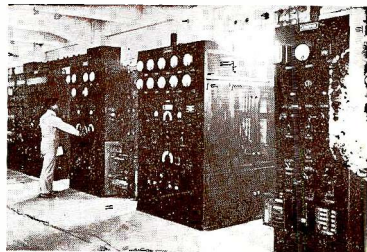


Broadcast Area	Broadcast Hours(GMT)	Call Sign	Frequencies in K. C.	Broadcast items
West Coast of North America, Hawaii	Daily 0500-0600	JVN JZI JVH JZK	10660 11800 14600 15160	News in English and Japanese, Music, Entertainment, Lecture. Etc.
Manila Dutch Indies Siam Malay State	Daily 1400-1500	JZI JZJ JZK	9535 11800 15160	"
European countries	Daily 1930-2030	JVP JZI JVM JZJ JZK	7510 9535 10740 11800 15160	"
East Coast of North America South America	Daily 2100-2200	JVN JZJ JZK JZL	10660 11800 15160 17785	"

RELAYING BROADCAST FOR MANCHUKUO AND FORMOSA

20 KW. Transmitter

Call Sign	Frequencies in K. C.	Broadcast Hours(GMT)	Broadcast items
		Daily	
JVT	6750	0000-0010	Weather forecast, Market quotations
JVP	7510	0240-0245	Market quotations
JZI	9535	0310-0410	News, Market quotations
JVN	10660	0650-0720	Market quotations, News
JVM	10740	0900-1230	Children's Hour, News, Lecture, Entertainment, Music, Drama, Etc.
JZI	11800		
JVH	14600	1230-1300	Time Signal, News, Weather forecast, Etc.
JZK	15160	2220-2240	Physical Exercise



Remarks :-

✱ Frequency used in this season of the year.

POST CARD

POSTAL
STAMP

KOKUSAI-DENWA KAISHA LTD.

Osaka Bldg., Kojimachiku, Tokyo, Japan.

Tokyo, Jan. 15, 1938

Dear Sir,

Thank you for your kindness of
informing us your receiving results of

J VH on Nov. 20th, 1938

J on 193

J on 193

We are very much obliged to you,
if you will kindly let us know your receiving
condition of our station in the future.

Yours Sincerely,

Kokusai-Denwa Kaisha. Ltd

(International Wireless Telephone

Company of Japan, Ltd)

per,

Mr. Kermit Geary