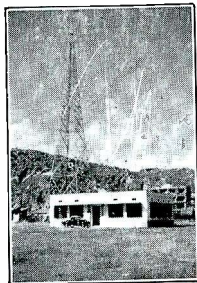
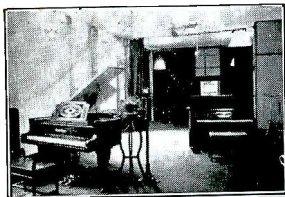
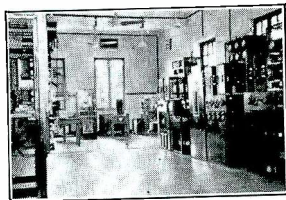


ZBW



HONG KONG



The Hongkong Broadcasting Station thanks you for your communication dated 22/10/36 and takes pleasure in confirming your reception of ZBW on 21st October 1936.

p. Secretary,
Hong Kong Broadcasting Committee.
Post Office Box No. 200

POSTCARD.

**STATION ZBW,
HONG KONG.**

Operated by Hong Kong Government.

Transmitters:

Marconi Type Q. 1.5 kW. to Aerial, 845 kc/s. 355 m.

„ „ SWB8. 2.5 kW. „ „ ~~9525 Mc/s. 3149 m.~~

Approximate Hours of } 1230 - 1430 Weekdays. **19.75 m.**
Broadcasting } 1700 - 2300 „

Ditto. } 1015 - 1430 Sundays.
} 1600 - 2230 „

Above times are Hong Kong Time (8 hrs. ahead of G.M.T.)

Chinese Programmes with Chinese Announcers are radiated
two or three times a week.



Mr. Kermit Geary,

R.F.D. No.2

Walnutport,

Pennsylvania,

U. S. A.