

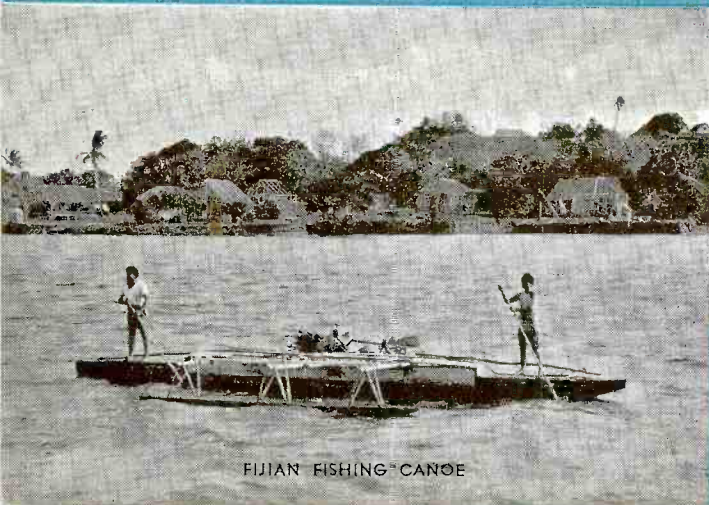
# V P D

# fiji

The Garden  
of The Pacific

These islands were discovered in 1643 by Tasman and were ceded to Great Britain in 1874. There are about 250 islands in the group. The population is about 172,000, of which 4,300 are Europeans. Principal exports are Sugar, Copra, Bananas, Rubber, Cotton and Shell.

Amalgamated Wireless (A/sia) Ltd. operates the wireless services of Fiji. At the principal station—VPD—there are 3 transmitters. All these stations were designed and built in Australia by A.W.A., which also owns and operates Australian Beam Stations, Coastal Radio, Ship Stations, and Short Wave Overseas Broadcasting Station 2ME Sydney.



FIJIAN FISHING CANOE



AMALGAMATED WIRELESS  
(A/SIA) LTD.  
SUVA. FIJI

# POST CARD



ADDRESS ONLY

Thanking you for your  
report of 30.8.35.

Mr. K. Geary,  
Walnutport,  
PENNSYLVANIA. U.S.A.

AMALGAMATED WIRELESS (AUSTRALASIA) LTD.

*K. Geary*

PRINTED IN GREAT BRITAIN