

VP3THE

JUNGLES OF BRITISH GUIANA SOUTH AMERICA

Confirming ^{reception} ~~SENTINEL~~ on Jan 12 1938

Transmitter: RCA Model ACT-200. RCA 838's
in final stage.

Receivers: RCA Model AR-60S Communication
Receiver.
RCA Victor Broadcast Receiver.

Remarks:

"Two Homesick Explorers"

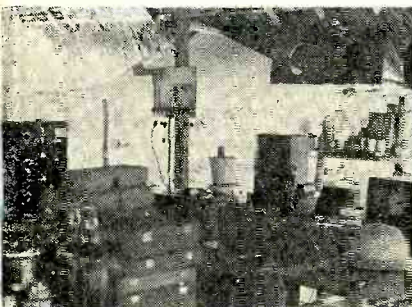
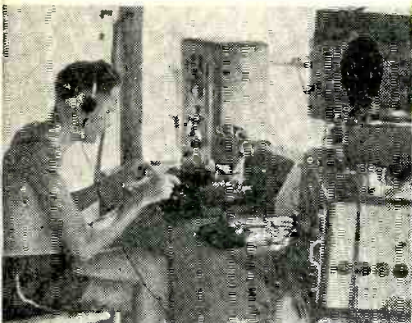
● On November 14, 1937, VP3THE went "on the air" after weeks of treacherous travel over river rapids, sun-parched savannas and dense tropical jungles to inform the world of the activities of the Terry-Holden Expedition for the American Museum of Natural History direct from the base camp.

● VP3THE was set up approximately 500 miles from civilization at Long. 2° 19' North—Lat. 58° 22' West. The station was operated by O. W. ("Bill") Hungerford, radio operator, and Neil ("Mac") MacMillan, field assistant.

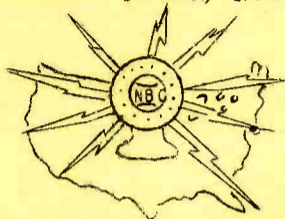
● Several NBC programs originated from the base camp which were picked up by R.C.A. Communications, Inc., at Riverhead, N. Y., and furnished to the NBC broadcast network.

● In spite of the humid, equatorial climate, not a single failure was experienced with this RCA equipment.

● On January 15, 1938, VP3THE went "off the air." We greatly appreciate your acknowledgment of our signals.



NATIONAL BROADCASTING COMPANY Inc
30 Rockefeller Plaza, New York City



This card will verify your reception of Station VP3THE, operated by the Terry-Holden Expedition now located near the Brazilian border in British Guiana.

This station does not transmit on a regular fixed schedule but from time to time its programs are broadcast exclusively over the Red and Blue Networks of the National Broadcasting Company.

NATIONAL BROADCASTING COMPANY Inc