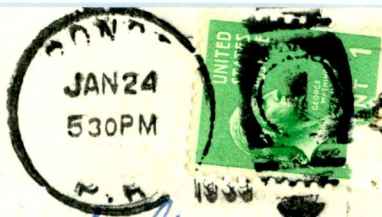


THE VOICE OF PUERTO RICO

Puerto Rico is one of the islands comprised in the West Indies Group, located midway between the two Americas. Has a population of over 1½ million. It is an agricultural country producing a good share of the world's sugar, coffee, tobacco, grapefruit, oranges etc. The climate is tropical, perpetual sunshine with moderate warm days and cool nights. Ponce is a city of 70,000 population, the center of the sugar industry and home of W.P.R.P. owned and operated by Julio M. Conesa an Electrical Engineer who designed and built the equipment under his personal supervision. It is the first station so built in Puerto Rico and the first to be housed in quarters specially designed for this purpose. DX programs will be dedicated twice monthly to American fans and advance notices will be sent to persons sending self addressed stamped envelopes.



Mr.

Kermit Geary
R. F. D. # 2
Walnutport,
Pennsylvania