



ALMA WHITE
Founder

THIS IS AN INVITATION TO VISIT....

Zarephath, New Jersey

PILLAR of FIRE---NATIONAL HEADQUARTERS

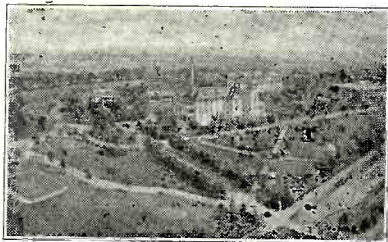
Come on Sunday and spend the day—hear Bishop Alma White. Three public services are held—11 a.m. and 3 p.m. in the church auditorium on the Campus, and in the Pillar of Fire Temple, Main Street, Bound Brook, in the evening at 7 o'clock.

These services are broadcast. Old-time religion and current world events are discussed by Bishop Alma White and other Pillar of Fire preachers.

If you cannot arrange to be present on Sunday, visit us during the week.

Pipe Organ, Orchestra, Pillar of Fire Band

Here are located *Alma White College, Alma Preparatory School, Zarephath Bible Seminary.* Send for catalogs. (OVER)



ZAREPHATH, N. J.

National headquarters of the Pillar of Fire and home of Station WAWZ

WAWZ

ZAREPHATH, N. J.

1350 Kc. 222.1 Meters

1000 Watts (daytime)

500 after ls.

Owned and operated by
the Pillar of Fire

SCHEDULE

Sunday—6:00 to 9:00 a.
m.; 11 a.m. to 12:30 p.
m.; 3:00 to 4:30 p.m.;
7:00 to 8:30 p.m.

Monday—6:00 to 9:00 a.
m.; 7:00 to 8:30 p.m.

Tuesday—7:45 to 8:45 a.
m.; 5:00 to 6:30 p.m.

Wed.—6:00 to 9:00 a.m.;
7:00 to 8:30 p.m.

Thursday—6:00 to 9:00
a.m.; 5:00 to 6:30 p.m.

Friday—6:00 to 9:00 a.
m.; 5:00 to 6:30 p.m.

Saturday—7:45 to 8:45
a.m. 5:00 to 6:30 p.m.

Phone Bound Brook 223

