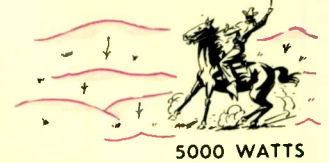


**RADIO
STATION**

KVSH



EVANS MEIER, Manager

TELEPHONE 1580 • MARIAN HOTEL STUDIOS • VALENTINE, NEBRASKA

April 10, 1962

Kermit Geary
R.D. 2, Box 298
Walnutport, Pa.

Dear Kermit:

Am most happy to verify your report of KVSH R/C on April 2, 1962. Your report was very complete and accurate. Glad to hear, you received such a fine signal. We are a comparatively new Station, on the air first time March 6, 1961. We are; 5KW - 940 Non-directional - Daytime, running a new Gates BC-5P-2 Xmtr.

Possibly the reason for your fine reception of KVSH, is due to the fact that our Xmtr site is in a swamp, (almost), and we've had a lot of snow, which has melted, leaving a lot of water in the ground.

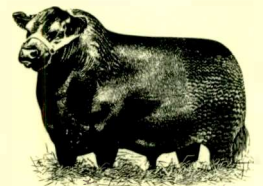
Thank you again for your fine report of reception, Kermit. Hope to hear from you again sometime.

Sincerely,

RADIO STATION KVSH

Harold Sobotka, Engineer
Member of NRC

lsb



NEBRASKA BEEF EMPIRE STATIONS