

January 23, 1937

Mr. Kermit Geary

R. F. D. #2

Walnutport, Pa.

Dear Mr. Geary:

This is to verify your reception of this station on January 16, 1937. Thank you very much for your report, and we certainly hope that you enjoy the brochure which we are sending you.

We will possibly be having another DX Program within two months and will let you know well in advance.

Very truly yours,

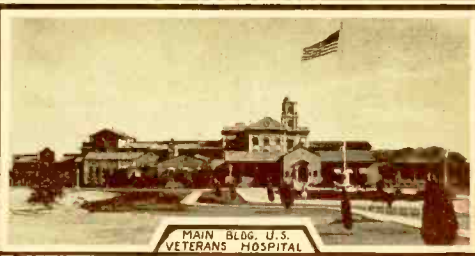
THE ARIZONA BROADCASTING CO.

King Whyte
By King Whyte

KW:EP



SAGUARO (GIANT CACTUS)
NAT'L MONUMENT



MAIN BLDG. U.S.
VETERANS HOSPITAL



A GUEST RANCH
NEAR TUCSON



DOME OF PIMA
COUNTY COURTHOUSE



TUCSON
CITY PARK



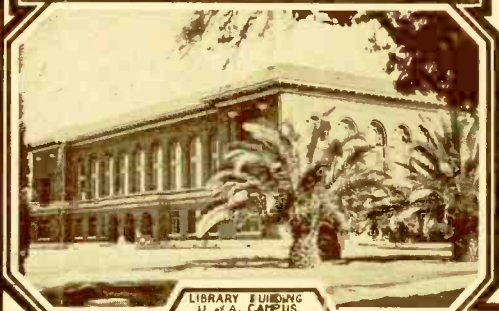
SPANISH TYPE HOME
IN NEARBY COCHILLES



MISSION
SAN XAVIER DEL BAC



ANNUAL
MID-WINTER RODEO

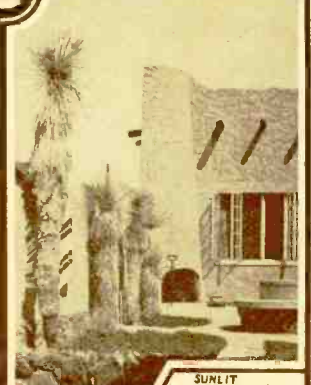


LIBRARY BUILDING
U. of A. CAMPUS



TALL PINES IN THE
CATALINAS

TRAVEL
THE ALL YEAR HIGH GEAR HIGHWAY
East to West via
BROADWAY of AMERICA



SUNLIT
PATIO