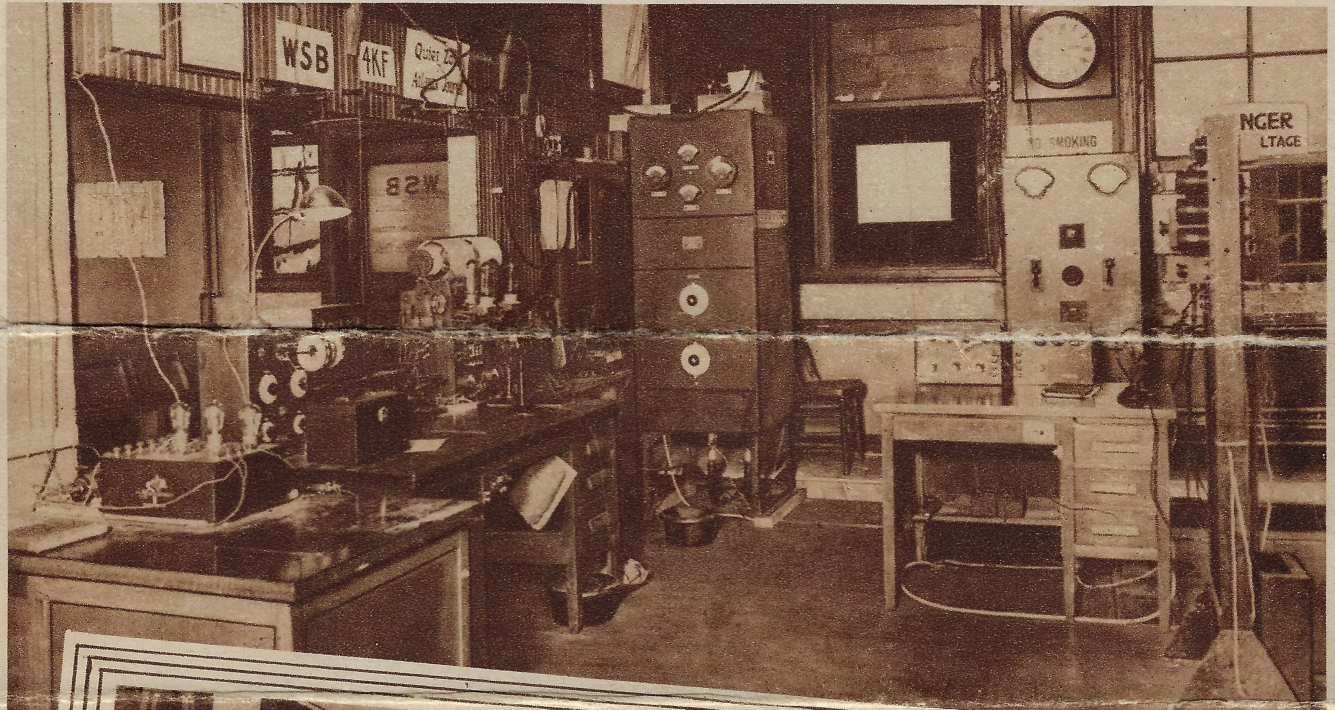


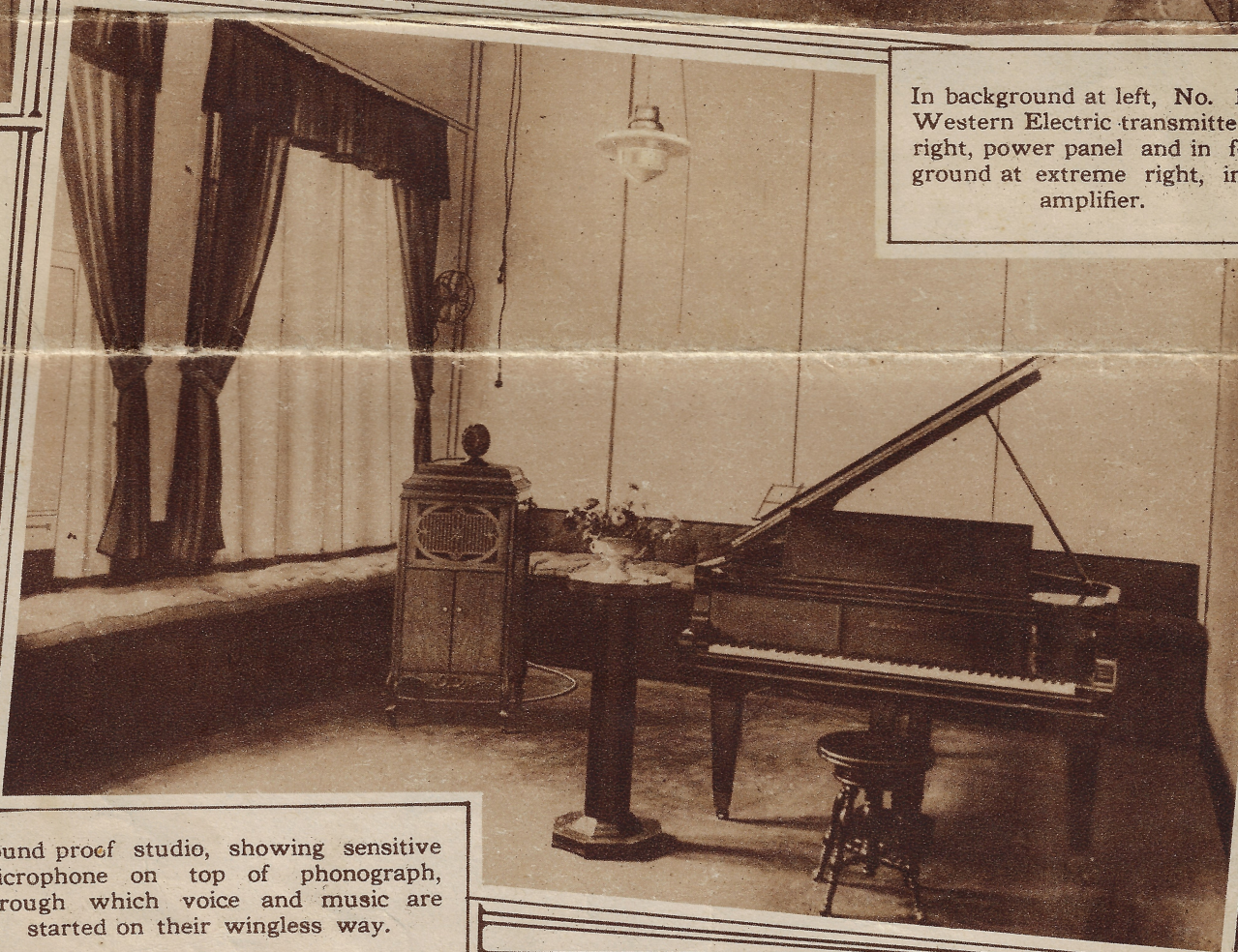


The Atlanta Journal

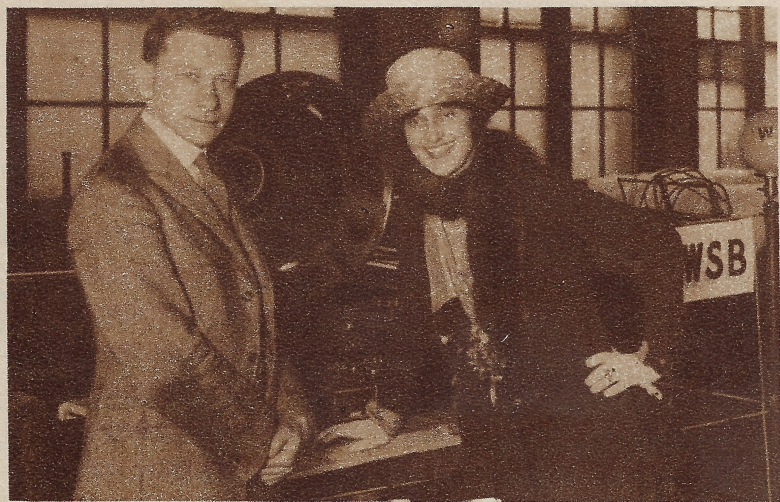
RADIOPHONE BROADCASTING
STATION.



In background at left, No. 1 A Western Electric transmitter, to right, power panel and in foreground at extreme right, input amplifier.



Sound proof studio, showing sensitive microphone on top of phonograph, through which voice and music are started on their wingless way.



Efreim Zimbalist, violinist, and his prima donna wife, Alma Gluck, who thrilled WSB's invisible audience.



Miss Rosa Ponselle and Miss Ellen Dalossy, Metropolitan grand opera stars, who sang over WSB.



Dr. J. Sprole Lyons, pastor of First Presbyterian Church, Atlanta, whose services are broadcast each Sunday morning by WSB. Dr. Lyons delivered the first radio sermon ever preached in the south over WSB.



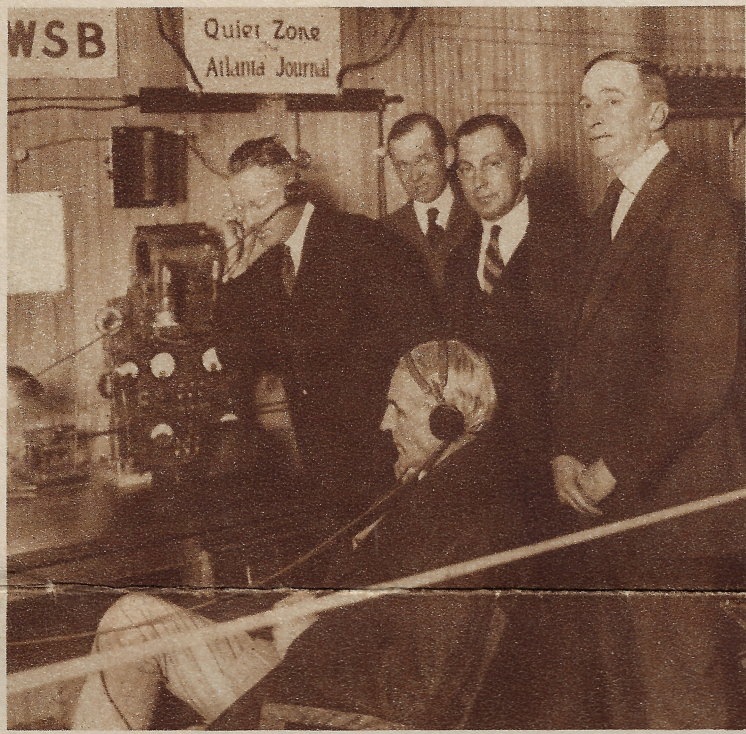
Mrs. Corra Harris, famous Georgia author, visits The Journal's radio room.



Octavus Roy Cohen, distinguished short story writer, before microphone in The Journal's sound proof studio.



Harry Stillwell Edwards, noted Georgia author, honors WSB with visit.



Henry Ford, sitting, is listening in over WSB. Standing left to right, Montgomery Haynes, Walker Lee, L. W. Robert, all of Atlanta, and John S. Cohen, editor of The Journal.



Hanford MacNider, National Commander of American Legion, spoke over The Journal's radiophone.



The Journal's radio truck equipped with receiver and loud speaker, visits parks, hospitals and public gathering places during WSB's concerts.



Miss Myrtle Schaaf, baby star of the Metropolitan Opera Company, who sang over WSB.



Galaxy of artists who gave the first program over The Journal's new radiophone.

WSB

Western Electric Equipment, Delivering 500 Watts to Antenna

Location: Fifth Floor Atlanta Journal Building, Atlanta, Ga.

During first month of operation this station was heard in 31 states, District of Columbia, Canada and Cuba

*Tune for 360 meters for music and entertainment,
485 meters for government reports.*

DAILY SCHEDULE

Central Standard Time.

- 12 Noon to 1 P. M. Weather forecast and summary of Cotton States, followed by music, speeches and entertainment for employes of business and industrial plants.
- 2:30 P. M. Close on cotton and grain and spot quotations of Atlanta Commercial Exchange and U. S. Bureau of Markets.
- 4:00 P. M. Concert by Howard Theatre Orchestra, Enrico Leide, director, Jack M. Lewis, Organist.
- 5 to 6 P. M. Baseball scores, late news flashes, bedtime story, and music program.
- 7 to 8 P. M. Concert of vocal and instrumental numbers.
- 10:45 to 11:15 P. M. Concert and entertainment features,

SUNDAY SCHEDULE

Central Standard Time.

- 11 A. M. Services of First Presbyterian Church of Atlanta, Dr. J. Sprole Lyons, Pastor, Charles A. Sheldon, Jr., Organist.
- 5 P. M. Sermon and Sacred Concert in The Journal's Radio Room.
- 8 P. M. Services of Wesley Memorial Church of Atlanta.

Subscription Rates

By Mail

Payable in Advance

DAILY AND SUNDAY

One year.....	\$9.50
Six months.....	5.00
Three months.....	2.50
One month.....	.90

THE DAILY JOURNAL

One year.....	\$7.50
Six months.....	4.00
Three months.....	2.00
One month.....	.70
Sunday only, 1 year.....	5.00
Six months.....	2.50
Single copy.....	.10

The Journal Covers Dixie Like the Dew

_____ 19

Atlanta Journal,
Atlanta, Ga.

Gentlemen:

Enclosed you will find \$ _____ for which please send me
the Daily and Sunday Journal, one year or _____ months

Very truly yours,

Name _____

P. O. _____

State _____

Remit by Money Order, Express, Check or Registered Letter and make payable to The Atlanta Journal Co.