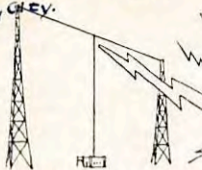


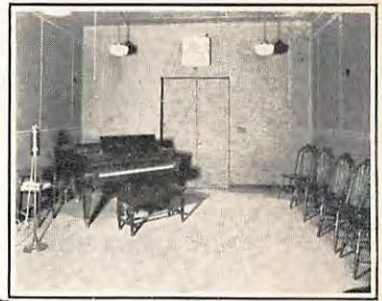
WBCM  
Ray GLEY.  
11-1633



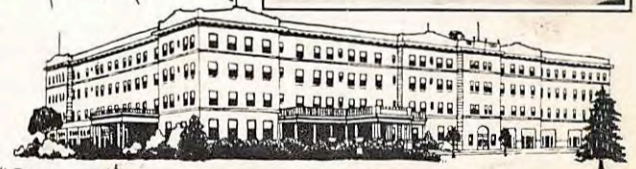
WBCM 1000 WATT STATION  
HAMPTON TOWNSHIP

# WBCM

WBCM  
CONCERT  
STUDIO-



STANLEY F. NORTHCOTT  
General Manager



*"The Voice of Northeastern Michigan"*  
STUDIOS and OFFICES in the HOTEL WENONAH  
BAY CITY • MICHIGAN

RADIO STATION WBCM  
OF BAY CITY, MICHIGAN  
"Where the Summer Trails Begin"



Nov. 14, 1933



Dear Radio Friend:

We send you this card as a verification of your reception of Station WBCM.

Our efforts are always directed towards providing the kind of programs that will cause you to turn your dials to WBCM every time you switch on your set.

We're on the air from 8 A.M. till midnight.

Sincerely yours,  
WBCM  
Stanley F. Northcott

Ernest R. Cooper,  
312 East Fifth St.,  
Brooklyn, N.Y.

1410 KILOCYCLES ... 212.6 METERS