

DXtra News

An additional (electronic-only) service of the National Radio Club

Volume 91, Extra No. 1 • March 3, 2024

Inside this issue . . .

2 ... Interim AM Switch	6 ... FCC CP List
3... D-608WB Review	13 ... FCC Silent List
4 ... Ramblings of the Members	15 ... Listserve – Kiwi SDRs
5 ... Broadcasting Industry News	18 ... Unreported Stations List

Welcome to DXtra News: This is our first issue of *DXtra News*, where we will circulate material that supplements the regular printed version of our flagship publication, *DX News*.

In the beginning, 90+ years ago, *DX News* was produced by mimeograph and mailed out to club members. In the 1960s, the NRC was the first radio club in North America to move to offset printing of its bulletins, and *DX News* remains one of the last bulletins that continues to be distributed in print, even as around two-thirds of NRC members receive *DX News* in an electronic format, either alongside or instead of the print edition.

Although the NRC remains committed to publishing a printed bulletin as long as members find it useful, ever-increasing printing and postage costs means we need to be careful about stewarding the available space in the printed bulletin. But with a significant majority of members now subscribing electronically, we don't want those space constraints to prevent us from distributing as much useful material as we can to the membership and the DX community. Hence, *DXtra News*.

What We Are Publishing: This is a new experiment for us in the NRC, so things may evolve as we go along. As we outlined it in the last issue of *DX News* (91-12), we envision at least five types of material:

1. Industry and station news that is of some interest to members but tends to be cut for space reasons. For example, we had to drop some of Jon Pearkings' Canadian station news from DDXD-West in *DX News* 91-12, and that material appears here below.

2. Longer contributions from members that go beyond the length and/or format for Musings and other *DX News* columns. There were a couple of Musings that also got dropped in *DX News* 91-12 for this reason and are included below.

3. Items that we plan to publish eventually in *DX News* but that we are holding over as we try to manage the *DX News* page count. For example, we have a review of the new XHDATA D-608WB portable by Gary De Bock that's waiting for an issue with room for it – but there's no need for you, dear electronic reader, to wait for the print version.

4. Reference material that I and other *DX News* editors maintain but that we don't normally have room to print, or at least print very often. Once again, with electronic distribution there's no reason the whole membership can't have access to these resources. I'm including a few of these below and am working to get the big enchilada – a comprehensive list of active STAs – in shape for publication soon.

5. Material from the IRCA listserve (into which the NRC folded its listserve a couple of years ago) that seems worthy of archiving for future reference. We have a little sample herein, but this is where your help comes in – see below.

When We Are Publishing: For now, there will be no fixed schedule. It will depend on the availability of material and the publisher's schedule. Perhaps, as things develop, we may find a specific rhythm. Or maybe not.

What You Can Do: First, your comments and feedback are always welcome and appreciated – even criticism (constructive, of course) is desired.

Second, if you have material you'd like to contribute – especially if you had been hesitant to send it to *DX News* because you didn't think we'd have room – we now would like to urge you to send it for consideration in *DXtra News*.

Third, if you have any interest in helping to make *DXtra News* happen, we welcome your help! Like all projects of the NRC, this is a volunteer endeavor, and many hands make light work. In particular, I'd appreciate help combing through the listserve for printable material.

Please send me any offers to help or material for publication at NRCDXNews@gmail.com. - DY



Interim AM Switch

FCC and CRTC changes since Issue 91-12 of *DX News* through Friday, March 1, 2024.

This material will appear in the next issue of *DX News*, but is made available now for members' information.

CALL CHANGES

As reflected in the FCC LMS database:

1100 KKLL MO Webb City – Call change to KJCW (Feb. 29).

CONSTRUCTION PERMITS (CPs) FOR EXISTING STATIONS

CPs fully licensed and on the air:

630 KFXD ID Boise – Granted license to cover CP with U1 5000/37, adjust coordinates to 43-30-56.3, 116-20-01.1.

1300 KDSO OR Phoenix – Granted license to cover CP with U2 5000/5000, existing site at 42-17-43.5, 122-48-19.1.

CPs built, pending final licensing (probably being used on the air):

870 WHCU NY Ithaca – Applies for license to cover CP to use a two-wire folded unipole antenna on the day tower as in current STA, remaining U2 5000/1000 from different day/night sites.

1370 WGIV NC Pineville – Applies for license to cover CP with U1 5000/67, new site at 35-13-04.5, 80-53-35.3.



CPs granted:

790 KBET NV Winchester – Granted CP with D1 500 at current site, adjust coordinates to 36-06-35.9, 111-00-14.0.

1040 WSGH NC Lewisville – Granted CP with D1 1100 at 36-07-53.1, 80-30-03.6.

Applications for CPs received:

730 WLTQ SC Charleston – Applies for CP with U1 1100/103 as in current STA, adjust coordinates to 32-46-24.6, 80-00-55.7.

SPECIAL TEMPORARY AUTHORITY (STA)

STAs granted:

1550 KRMI UT West Valley City – Granted STA, D1 1000, 24' vertical at licensed site.

Applications for STA received:

740 KRMG OK Tulsa – Applies for STA, U1 12500/6250, failed connector on Tower 2.

1230 WJBC IL Bloomington – Is using U1 600/600 from backup transmitter.

Extensions of prior STAs granted (usually for an additional 6 months):

920 WHJJ RI Providence – Granted STA extension, U1 5000/1250.

1070 KFTI KS Wichita – Granted STA extension, day parameters at variance.

1550 KKCL CO Golden – Granted STA extension, U1 200/87.5, 120' LW at 39-45-49, 105-14-12.

WSRY MD Elkton – Granted STA extension, parameters at variance.

1590 WFBR MD Glen Burnie – Granted STA extension, parameters at variance.

Applications to extend previously granted STAs received from WSJS-600 Winston-Salem NC, KKLS-920 Rapid City SD, WIXC-1060 Titusville FL, WJIT-1250 Sabana PR, WOBBM-1310 Asbury Park NJ, WBTM-1330 Danville VA, WRSJ-1520 San Juan PR., and WWDN-1580 Danville VA.

STAs no longer needed; stations notifying FCC that they are back to licensed operations:

1640 KDIA CA Vallejo – STA for U1 10000/1830 from day site moot; back to U2 10000/10000 Dec. 13, 2023.

SILENT STATIONS

Formerly silent stations notifying the FCC that they are on the air:

1190 KDYA CA Vallejo – Silent Dec. 7, 2023; back on the air Dec. 13, 2023.

1500 WAKE IN Valparaiso – Silent Mar. 1, 2023; on the air Feb. 28 with STA (U1 62.5/11 from CP site).

1550 KMRI UT West Valley City – Silent Mar. 4, 2023; on the air Feb. 29 with STA as above.

NON-COMMERCIAL STATUS

1240 WPJL NC Raleigh – Applies to change to non-commercial status upon completion of sale to Divine Mercy Radio, Inc.

XHDATA D-608WB Ultralight Portable Tech Report and Loopstick Upgrade

Gary DeBock via groups.io via Phil Bytheway

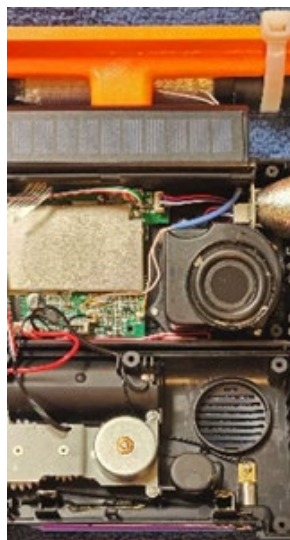
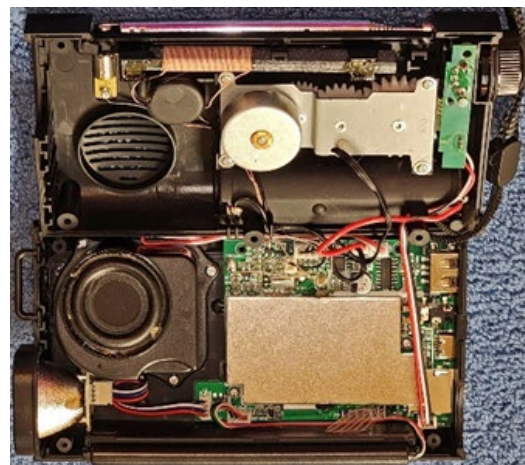
The new XHDATA D-608WB is another innovative portable from the manufacturer of the D-808, R-108, D109 and D-109WB models. For the price of US\$41.50 you get an AM-FM-SW-Weather band



receiver with a 3000 mAh “18650” lithium battery, a built-in emergency flashlight, emergency hand crank and solar panel for charging the battery, an MP3 player with Bluetooth capability and a superb 5 watt-rated speaker (although the audio output power is only 2 watts).

The MW reception of the stock D-608WB portable is fairly good (up to the level of the D-109 and PL-380 on their 3 kHz filters), even though there is no direct frequency input, rotary volume control or selectivity options. But I figured that if I was really using this radio in an emergency, I would probably want to chase DX with it! For me, that means really digging out weak AM signals with a highly sensitive external loopstick, boosting the AM-DXing capability of this compact portable far past anything the Chinese designers ever dreamed of.

As such, the first “supercharged” D-608WB is now a reality. The stock loopstick is a 265 uH single coil design on a 3 1/8” (79mm) ferrite bar, with fairly accessible circuit board connections. This portable is fairly unique in having almost no plug-in connections between the front and back sections – almost everything is hard wired, like you are opening up a book. The DSP chip is probably an Si4734 like that of the D-109, but it is hidden under a well-soldered shield. In any case, the performance is very similar to Si4734 radios (D-109 and PL-380) on their 3 kHz filters, and the 265 uH stock loopstick inductance also is within the Si4734 chip range. For the loopstick transplant job, everything went very smoothly after the 5 cabinet screws were removed from the back panel. These self-tapping screws are small, tightly installed and obviously not meant to be played with. After using a jeweler’s screwdriver to remove all of them, I got the distinct impression that XHDATA would probably want to replace any defective radios rather than repair them.



So how does the “supercharged” D-608WB perform on AM? In combination with the radio’s superb deep-bass speaker, you can chase DX with booming, high fidelity audio backing you up. The radio has a very powerful audio amp, so investigating weak signals becomes a real thrill. Marginal signals which hang around the noise level on other models (“supercharged” D-108 and R-108) can pound in with good audio on the souped-up D-608WB. The only “supercharged” Ultralight model that can match it in both audio quality and audio amp power is the new Qodosen SR-286, which has a slight MW sensitivity edge over it (but which is significantly trickier to “supercharge”). The D-608WB has a solar panel installed on the top cabinet surface, but you can still attach the antenna frame and keep the solar panel functional. As a bonus, you can use the same 7.5” upgrade loopstick as described in the Tecsun PL-380 “supercharging” article posted at:

<https://dreamcrafts.box.com/s/xu7drqyg7epmljm4yu4579hcrin9em6p>

Overall, this model is a real thriller for its total construction cost of about US\$75.

73 and Good DX, **Gary DeBock** (in Puyallup WA, USA)

Ramblings of the Members

Here are two submissions to the last issue of Musings of the Members that were a bit too long or outside our usual Musings format to be included in a print issue where space was tight.

John F. Vervoot, Toledo OH

Equipment: Sangean ATS 818ACS "silver," Radio Shack MF Broadcast Band loop. Calendar year of 2023.

As I have free time now, I'll use this opportunity to share more station loggings. This report will begin at station 62. 710 WOR Rutherford, NJ 30 AUG 23:00, 492.81 mi. 63. 790 WNIS Hampton, VA 30 AUG 23:33, 498.21 mi. 64. 810 WGY Rotterdam, NY 30 AUG 23:50, 492.15 mi. 65. 830 WCCO Coon Rapids, MN 31 AUG 04:59, 550.33 mi. 66. 840 WHAS Louisville, KY 07 SEP 20:05, 255.04 mi. 67. 970 WGTK Jeffersonville, IN 07 SEP 20:19, 258.67 mi. 68. 980 WONE Kettering, OH 07 SEP 20:28, 141.06 mi. 69. 1010 CFRB Mississauga, ON 07 SEP 20:46, 236.96 mi. 70. 1010 WINS Lyndhurst, NJ 07 SEP 20:48, 491.84 mi. 71. 1120 KMOX Pontoon Beach, IL 08 SEP 22:00 400.89 mi. 72. 1530 WCKY Villa Hills, KY 13 SEP 20:48, 187.52 mi. 73. 1590 WCGO Skokie, IL 13 SEP 21:00, 217.85 mi. 74. 1650 KCNZ Hudson, IA 13 SEP 21:18, 461.04 mi. 75. 1700 KBGG Pleasant Hill, IA 13 SEP 21:37, 517.21 mi. 76. 540 WWCS Canonsburg, PA 15 SEP 21:28, 197.18 mi. 77. 610 WTEL Bellmawr, NJ 15 SEP 22:53, 456.38 mi. 78. 620 WRJZ Knoxville, TN 15 SEP 22:56, 391.27 mi. 79. 660 WMIC Sandusky, MI 16 SEP 16:59, 125.42 mi. 80. 680 CFTR Grimsby, ON 16 SEP 17:05 227.93 mi. 81. 690 WNZKday Huron Charter Twp., MI 16 SEP 17:07, 32.50 mi. 82. 790 WTSK Tuscaloosa, AL 17 SEP 23:40, 625.62 mi. 83. 1080 KRLD Garland, TX 19 SEP 21:59, 940.27 mi. 84. 1110 WBT Charlotte, NC 23 SEP 22:52, 471.84 mi. 85. 1190 WOWO Roanoke, IN 23 SEP 22:56, 105.59 mi. 86. 1190 WLIB Lyndhurst, NJ 23 SEP 23:44, 491.80 mi. 87. 1200 WKST New Castle, PA 24 SEP 23:59, 169.05 mi. I will end this report at this point. More on the way...



Name Withheld on Request

I read about Linda Brodsky's RFI (radio frequency interference) problem described in Vol. 91 No. 9 of *DX News* (Jan. 23, 2024). Hopefully she has resolved her issues by now, but if not, here are some suggestions.

First, you stated that you suspect one of the electric poles near your home may be the source. I'll address that later in this letter. To be certain, first ensure that you are listening to the interference on a battery-powered radio, then turn off each circuit breaker in your home panel box, one at a time. Does the interference go away? If so, find out which devices turned off when the noise stopped. It will be a simple process of elimination to locate the problem device.

Once you're confident, using the above procedure, that the noise is not coming from something in your own home, you can proceed to look outdoors.

Do you have a (somewhat) directional antenna and AM portable you can use outdoors? Some radio scanners have the AM aircraft band available. With one of those, you can hold the radio close in front of you and, using your body as a shield, turn around; see if you can locate from which direction the noise originates. If it seems to come from all around, you may have multiple origins. (I used this method once to find a defective fence charger arcing to a single weed stem, and also discovering the charger was of an outdated design that arced internally. The owner "allowed" me to buy him a model of newer design – problem solved!) An FM radio will be of no help for this application.

The problem of bad insulators on an electric pole is a problem I experienced after buying a house in an older neighborhood. You should know that the FCC places the onus on the power company to locate and replace "leaky" insulators. They will, in fact, thank you for getting their attention because power leaks cost them money (leaks to ground is electricity they don't get paid for!). Many power companies have a single point-of-contract who will bring out some expensive equipment and quickly locate arcing insulators. They typically leak after being struck by lightning.

I hate to advertise for a business that will not compensate the NRC for a plug, but MFJ Enterprises sells equipment at a reasonable price which will allow you to locate leaky power pole insulators (and RFI sources) yourself. The most basic "detective" device is an ultrasound microphone and amplifier. This typically has a small parabolic dish on the front with the microphone mounted at the focal point. They usually have a jack (for headphones) so you can hear the arc. The device lowers the frequency so that a human can hear it. Some also have a signal strength meter. Most also have some kind of sighting mechanism (like a tube or a gun sight) because ultrasound is highly directional. Move the focal point of the dish a few inches away from the arc and you'll miss the source of the noise. Use a tripod for stabilization.

And another shameless plug: the ARRL sells a book to teach you more about hunting down RFI.

My power company came out and located nine (!) bad insulators in my 25-year-old neighborhood. The FCC will actually fine the power company if they take no action on a bad/arcing insulator report! The guy who came out gave me a few of the old insulators after he changed them out. Most of them looked like mushroom roots on the surface of the ceramic (but black) and, being carbon, once the arc finds a path to ground, it will only get worse!

I also had a 4DTV satellite receiver which, although functioning perfectly, sounded like a clock ticking every 15 kHz. Unplugging it when I wanted to use my radio fixed the problem. And a box sold by Ten-Tec made to install on their Orion radio had to have its own power source ... using the 12V DC out jack on the back of the radio provided an S-5 noise level every 10 kHz!

P.S. – Almost forgot! There used to be a website maintained by a ham op with sound files of various RFI which were identified. I don't remember the URL. (I think you mean this one: <https://www.arrl.org/sounds-of-rfi> - DY).

Broadcast Industry News

Here's some of Jon Pearkins' News from Canada that we held back from the last issue of DDXD-West.



Last week, Bell Canada (BCE) announced layoffs of 9% of its staff, 4800 employees, with less than 500 of those layoffs in its Bell Media subsidiary. At the same time, it announced agreements to sell 45 of its 103 regional radio stations in BC, ON, QC and Atlantic Canada. The AM stations, including repeater transmitters, are listed below. There is some doubt about when the CRTC will consider Bell's applications to sell these stations given the CRTC's current moratorium on radio applications. Which could explain why the Bell announcement of the agreement to sell the stations ended with an assurance that it would be business as usual at each radio station until the ownership transfer occurs.

- 590 CFTK BC Terrace** – Bell Media has agreed to sell the station to Vista Radio, subject to CRTC approval.
- 590 CJCW NB Sussex** – The CRTC has approved the station's move to FM on 92.9 MHz with 1400 Watts utilizing a directional pattern at 320 feet above average terrain (EHAAT). No change in the Adult Contemporary music format is planned. Traditionally, once the FM transmitter completes its test phase, there is a three-month simulcast period. This is normally voluntary but the CRTC made it mandatory in CJCW's case since some communities served by the AM signal will be unable to receive a listenable signal from CJCW-FM.
- 610 CKTB ON St. Catharines** – Bell Media has agreed to sell the station to Whiteoaks Communications Group, a company founded in 1956 solely to launch CHWO-1250 Oakville, Ontario.
- 800 CKOR BC Penticton** – Bell Media has agreed to sell the station to Vista Radio, subject to CRTC approval.
- 870 CKIR BC Invermere** – Bell Media has agreed to sell CKGR-FM and its CKIR repeater to Vista Radio, subject to CRTC approval.
- 890 CJDC BC Dawson Creek** – Bell Media has agreed to sell the station to Vista Radio, subject to CRTC approval.
- 910 CKDQ AB Drumheller** – The CRTC has approved the station's move to FM on 92.5 MHz with 36,600 Watts utilizing a directional pattern at 125 feet EHAAT. No change in the Country music format is planned. The station is the last Alberta AM not serving the Edmonton or Calgary markets and even CKDQ targeted Calgary listeners when they first were granted 50 kW. The traditional three-month AM-FM simulcast period was made mandatory by the CRTC once the FM transmitter completes its test phase.
- 1150 CKFR BC Kelowna** – Bell Media has agreed to sell the station to Vista Radio, subject to CRTC approval.
- 1240 CJOR BC Osoyoos** – Bell Media has agreed to sell the station to Vista Radio, subject to CRTC approval.
- 1400 CIOR BC Princeton** – Bell Media has agreed to sell CJOR-1240 and its CIOR repeater transmitter to Vista Radio, subject to CRTC approval.

Anybody else have (or want to develop) a "beat" within the radio industry you'd like to cover for us? Let us know – drop a line to David at NRCDXNews@gmail.com and let's chat.

FCC Construction Permits

There are no active FCC construction permits (CPs) for new stations, and all applications from the last application window (in 2004) have been processed. A handful of even earlier applications are still listed as “pending” by the FCC:

1180	APP	GA	Lizella – U4 2000/2000 (submitted 2000-02-16).
1340	APP	CA	Mount Shasta – U1 250/250 (filed 2000-02-18).
	APP	OR	Central Point – U1 1000/1000 (filed 2000-02-11).
	APP	OR	Central Point – U1 800/800 (filed 2000-02-18).
1620	APP	NJ	Toms River – U1 10000/1000 (filed 1997-06-16, dismissed 2005-01-27, reinstated 2005-06-17).



At this time, the FCC is only accepting applications for “minor modification” CPs from currently licensed stations. This means that the new facilities, when built, would overlap sufficiently with the already-licensed facilities that both could not be authorized simultaneously. This allows for frequency moves of up to 30 kHz (but not more), as well as geographical moves within the coverage overlap area.

The FCC also requires a CP for corrections to a station’s geographical coordinates of at least 3 seconds of latitude or longitude, even if no actual “construction” will take place.

With the FCC’s transition to the new Licensing and Management System (LMS) for processing station applications, including for CPs as of mid-2023, coordinates are given in the “NAD83” reference system (to the nearest tenth of a second). Older applications and authorizations are in the “NAD27” system (to the nearest second), and the coordinates of any given station in the two systems may vary by a couple of seconds, especially in longitude. Coordinates below in the format “40-00-00.0, 80-00-00.0” are NAD83 and in the format “40-00-00/80-00-00” are NAD27. All latitudes are North and all longitudes are West, unless otherwise specified.

Once the CP is substantially built, the station applies for a “license to cover” (LTC) the CP, containing data about the actual operation of the constructed facilities. In most cases stations that have submitted an LTC application will use the CP facilities on the air under “program test authority.” If the station does not file for an LTC within 3 years of the grant of a CP, the CP expires and the station must reapply for a new CP if it wishes to proceed with the project.

With the transition to the LMS system, we may have lost track of a couple of CPs along the way, but I believe this is a full listing of all outstanding CPs and CP applications.

These 21 CPs have a pending application for a license to cover:

550	KNUI	HI	Wailuku – CP with U1 5000/5000, new site (co-located with KCIK-740, KMVI-900, and KUAU-1570) at 20-47-30.0, 156-28-01.0; applied for LTC 2024-02-22.
590	KSUB	UT	Cedar City – CP with U1 5000/138, current site at 37-41-51.0, 113-10-54.4; applied for LTC 2023-10-13.
870	WHCU	NY	Ithaca – CP for new day antenna, remaining U2 5000/1000 at 42-27-54.3, 76-22-21.8 (day), 42-21-47.3, 76-36-20.8 (night); applied for LTC 2024-02-29.
890	KMVG	MO	Gladstone – CP with D3 1000, new site (co-located with KDMR-1190) at 39-03-49.0, 94-30-38.0; applied for LTC 202-01-02.
940	KDIL	ID	Jerome – CP with U1 410/142, current site (co-located with KRXR-1480) at 42-43-38.7, 114-37-40.2; applied for LTC 2023-12-22.
960	WKVX	OH	Wooster – CP to correct coordinates 40-47-39.0, 81-54-15.0; applied for LTC 2024-01-29.
1080	KSCO	CA	Santa Cruz – CP with U1 10000/28, current site at 36-57-41.5, 121-58-55.3; applied for LTC 2023-11-15.
1090	WILD	MA	Boston – CP with D1 2600 (ch 1750), new site (co-located with WBIX-1260) at 42-16-30, 71-02-30; applied for LTC 2023-08-22.
1210	WJNL	MI	Kingsley – CP with D1 10000 (ch 2500), current site at 44-33-34.0, 85-35-37.0; applied for LTC 2023-12-28.
1240	KCLV	NM	Clovis – CP with U1 1000/1000, new site at 34-24-18.3, 103-11-11.8; applied for LTC 2024-01-02.
1260	WSHU	CT	Westport – CP with U1 688/72, new tower at 41-07-41.4, 73-23-24.4; applied for LTC 2023-10-12.
1280	KIT	WA	Yakima – CP with U1 4500/810, new site (co-located with KUTI-1460) at 46-33-28.2, 120-27-06.6; applied for LTC 2024-01-03.

1310	WCCW	MI	Traverse City – CP with D1 15000, new site at 44-46-02.0, 85-41-26.0; applied for LTC 2024-01-16.
1320	WBTL	VA	Ashland – CP with U1 350/8, <u>ex-CoL Richmond VA</u> , new site (co-located with WHAN-1430) at 37-44-47.5, 77-29-42.9; applied for LTC 2024-01-16.
1330	KGRG	WA	Enumclaw – CP with U1 770/210, current site at 47-12-52.0, 121-58-22.8; applied for LTC 2023-11-07.
1370	WGIV	NC	Pineville – CP with U1 5000/67, new site at 35-13-04.5, 80-53-35.3; applied for LTC 2024-02-27.
1390	WEGP	ME	Presque Isle – CP with U2 5000/5000, current site at 46-39-14.6, 68-02-59.7; applied for LTC 2024-01-03.
1420	KGIM	SD	Aberdeen – CP with U1 1000/210, new site at 45-25-27.0, 98-31-07.0; applied for LTC 2024-01-29.
1480	KRXR	ID	Filer – CP with U1 1300/80, <u>CoL ex-Gooding ID</u> , new site (co-located with KDIL-940) at 42-43-38.7, 114-37-40.2; applied for LTC 2023-07-17.
1530	WJDM	NY	Mineola – CP with D1 10000 (ch 500), <u>ex-1520 kHz</u> , current site at 40-41-06.4, 73-36-34.5; applied for LTC 2023-11-16.
1600	WLXE	MD	Rockville – CP with U1 1015/9, current site at 39-05-51.4, 77-09-05.9; applied for LTC 2024-02-20.

These 142 CPs are within their 3-year window for construction:

550	KTZN	AK	Anchorage – CP with U1 5000/5000, current site (expires 2025-08-12).
560	WNSR	TN	Brentwood – CP with U1 1000/75, consolidated at current night site (expires 2025-03-04).
570	WMAM	WI	Marinette – CP with U1 180/100, new site (co-located with WHYB-FM-103.7) at 45-03-58/87-39-55 (expires 2025-08-09).
590	KSSK	HI	Honolulu – CP with U1 7800/7800, current site (expires 2025-03-28).
	KLBJ	TX	Austin – CP with U1 5000/350, new site (new tower at KVET-1300 site) at 30-22-31/97-43-01 (expires 2025-11-30).
600	KOGO	CA	San Diego – CP with U4 9000/1000, new site (co-located with KGB-760) at 32-50-35/117-01-30 (expires 2025-02-24).
	WBOB	FL	Jacksonville – CP with U1 20000/800, current site (expires 2024-03-25).
	WSJS	NC	Winston-Salem – CP with U1 1700/110, new site (co-located with WPOL-1340 and WSMX-1500) at 36-04-26/80-15-19 (expires 2026-01-11).
610	KILT	TX	Houston – CP with U4 2700/2500, new site (co-located with KNTH-1070) at 29-59-34/95-28-20 (expires 2025-07-26).
	KVNU	UT	Logan – CP with U4 22000/1000, current site (expires 2024-12-02).
620	WAKY	KY	Louisville – CP with U4 350/300, current site (2 of current 5 towers) at 38-18-59.9, 85-42-02.6 (expires 2027-01-30).
	WSNR	NJ	Jersey City – CP with U4 7000/1500, new site (co-located with WPAT-930 and WNSW-1430) at 40-50-59/74-10-59 (expires 2026-08-11).
640	KYUK	AK	Bethel – CP with new tower at 60-46-59/161-53-00 (expires 2026-02-06).
670	WRJR	VA	Claremont – CP with U4 12000/3, current site (expires 2026-08-04).
690	KOLT	NE	Lexington – CP with U1 1000/75, new site at 41-47-29.9, 103-38-30.8 (expires 2025-03-04).
700	WDMV	MD	Walkersville – CP with D3 50000, current site at 39-27-23/77-19-26 (expires 2025-01-03).
720	WGN	IL	Chicago – CP with U1 50000/50000, new tower at 42-00-43/88-02-02 (expires 2026-06-07).
	KDWN	NV	Las Vegas – CP with U2 25000/4000, new site (co-located with KXST-1140) at 36-23-52.9, 114-55-00.0 (expires 2027-01-08).
	WHYF	PA	Shiremanstown – CP with D1 2500, new site (co-located with WHP-580) at 40-18-12/76-57-14 (expires 2024-07-12).
740	KCIK	HI	Kihei – CP with U1 2000/2000, current site at 20-47-18.8, 156-27-51.0 (expires 2026-12-18).
770	WEW	MO	Saint Louis – CP with U4 10000/200, new site at 38-38-33/90-01-50 (expires 2025-10-05).
780	KJME	CO	Fountain – CP with U1 500/15, new site (co-located with KCEG-890) at 38-49-08/104-46-32 (expires 2025-08-09).
790	KEJY	CA	Eureka – CP with U1 500/340 <u>on 760 kHz</u> , new site (co-located with KWSW-980) at 40-48-02/124-07-39 (expires 2024-05-12).
	KBET	NV	Winchester – CP with D1 500, current site at 36-06-35.9, 111-00-14.0 (expires 2027-02-28).

800	WPJM	SC	Greer – CP with U1 1000/500, new site at 34-56-09/82-11-37 (expires 2024-09-28).
810	WRSO	FL	Orlovista – CP with U5 2000/21, current site at 28-34-12/81-26-00 (expires 2025-11-16).
820	WWBA	FL	Largo – CP with U4 10000/630, current site at 27-54-29/82-46-55 (expires 2025-05-20).
830	KHVH	HI	Honolulu – CP with U1 11000/11000, current site (expires 2025-03-28).
840	WRYM	CT	New Britain – CP with U4 3200/125, current site (expires 2026-01-04).
850	KFUO	MO	Clayton – CP with L1 3800, new site (co-located with KXFN-1380) at 38-31-25/90-14-19; will continue to operate from LSR Clayton to LSS Denver (expires 2026-01-06).
860	KTRB	CA	San Francisco – CP with U2 50000/6000, consolidated at existing day site (expires 2024-08-24).
	WDMG	GA	Douglas – CP with U1 1000/28, current site at 31-30-23/82-49-03 (expires 2024-05-19).
880	WAMI	AL	Opp – CP with D1 13000, CoL to Jackson’s Gap AL, new site at 32-39-13/85-57-21 (expires 2025-07-07).
890	KCEG	CO	Fountain – CP with U1 2500/12, new site (co-located with KJME-780) at 38-49-08/104-46-32 (expires 2025-08-09).
900	WURD	PA	Philadelphia – CP with U4 2500/230, current site (expires 2024-12-17).
	WNMB	SC	North Myrtle Beach – CP with U1 250/80, new site (co-located with WMIR-1200) at 33-50-06/78-47-02 (expires 2025-04-15).
910	WTMZ	SC	Dorchester Terrace-Brentwood – CP with U1 500/85, current site at 32-52-20/79-58-36 (expires 2026-09-01).
920	KQBU	TX	El Paso – CP with U1 1500/66, new site (co-located with KAMA-750) at 31-46-30.4, 106-16-47.9 (expires 2026-02-07).
940	WIPR	PR	San Juan – CP with U1 3000/1900, new site (co-located with WSKN-1320) at 18-22-52.8, 66-03-59.6 (expires 2026-12-08).
950	WBES	WV	Charleston -CP with D1 1000 at new site (co-located with WVTS-1240) at 38-23-08.3, 81-42-50.5 (expires 2026-12-20).
970	KHVN	TX	Fort Worth – CP with U1 600/240, new site (co-located with KKGM-1630) at 32-48-36/97-07-24 (expires 2024-10-29).
980	WDYN	GA	Rossville – CP with U1 2500/45, current site at 34-57-55/85-17-59 (expires 2026-01-11).
990	KRKS	CO	Denver – CP to build new towers on same property and make slight changes to night pattern; new day tower at 39-47-56/104-58-14, night towers centered at 39-47-58/104-58-14 (expires 2024-12-20).
	KIKI	HI	Honolulu – CP with U1 5700/5700, current site (expires 2025-03-28).
1000	WCCD	OH	Parma – CP with D3 200, new site (co-located with WHK-1420) at 41-21-30/81-40-03 (expires 2026-06-28).
1010	KLAT	TX	Houston – CP with U4 5000/3000, consolidated at existing day site at 29-53-47.8, 95-17-25.8 (expires 2027-02-23).
1040	WHBO	FL	Pinellas Park – CP with U2 3600/430, current site at 27-50-51/82-46-23 (expires 2025-05-06).
	WSGH	NC	Lewisville – CP with D1 1100 at 36-07-53.1, 80-30-03.6 (expires 2027-02-28).
1050	KJBN	AR	Little Rock – CP with U1 2500/23, new site at 34-36-40/92-14-26 (expires 2026-03-15).
	WBQH	MD	Silver Spring – CP with U1 2000/41, new site (co-located with WFED-1500) at 39-02-31.4, 77-02-45.9 (expires 2027-01-30).
	WGRI	OH	Cincinnati – CP with U5 2500/25, new site (co-located with WCVX-1160) at 38-58-09.2, 84-40-55.8 (expires 2027-02-22).
1070	WNCT	NC	Greenville – CP with U1 5000/13, current site at 35-36-11/77-25-35 (expires 202-05-17).
1080	KOAN	AK	Anchorage – CP with new site (former KBYR-700 tower) 61-11-33/149-54-01 (expires 2024-09-03).
1090	KAAY	AR	Little Rock – CP with U1 50000/80, current site at 34-36-02/92-13-24 (expires 2025-05-06).
	KBOZ	MT	Bozeman – CP with U1 5000/32, new site (co-located with KOB-1230) at 45-36-30/111-05-05 (expires 2025-08-16).
1100	KFAX	CA	San Francisco – CP to rebuild towers on roof of new building (expires 2024-07-09).
1110	WOMN	LA	Franklinton – CP with D1 15000 (ch 10000) <u>on 1100 kHz</u> , new site at 30-44-12/90-12-04 (expires 2024-08-31).

	WTJZ	VA	Norfolk – CP with D1 1600 (ch 1200), new site (co-located with WPMH-1270) at 37-01-52/76-22-00 (expires 2025-09-30).
1130	KSDO	CA	San Diego – CP with U4 5000/300, new site (two dropwires at KLSD-1360 site) at 32-43-51/117-04-59 (expires 2025-10-12).
1140	KXST	NV	North Las Vegas – CP with U4 12000/100, new site (co-located with KDWN-720) at 36-23-52.9, 114-55-00.0 (expires 2027-01-08).
	WRVA	VA	Richmond – CP to correct coordinates to 37-24-16.3, 77-18-53.2 (expires 2027-01-30).
1160	WMTI	PR	Barceloneta-Manatí – CP with U5 5000/2700, new site at 18-20-37/66-25-04 (expires 2024-04-07).
1170	WFPB	MA	Orleans – CP with D1 1000, new site at 41-46-32/69-59-47 (expires 2026-09-20).
1180	KERN	CA	Wasco-Greenacres – CP with U4 10000/10000, current site (expires 2026-03-08).
1200	WSML	NC	Graham – CP with U1 4600/8, new site (co-located with WPCM-920) at 36-05-51/79-29-11 (expires 2025-02-08).
1210	KQEQ	CA	Fowler – CP with U4 5000/138, consolidated at current day site at 36-46-13.8, 119-55-23.5 (expires 2026-12-27).
	KHAT	WY	Laramie – CP with D1 1000, current site at 41-15-20/105-33-03 (expires 2026-03-08).
1220	WAYE	AL	Birmingham – CP with U1 1000/75, new site (co-located with WJLD-1400) at 33-28-37/86-53-00 (expires 2024-09-30).
1230	WSOK	GA	Savannah – CP to correct coordinates to 32-04-13/81-04-42 (expires 2024-05-12).
	KOBB	MT	Bozeman – CP with U1 1000/1000, new site (co-located with KBOZ-1090) at 45-36-30/111-05-05 (expires 2025-08-16).
	KDYM	WA	Sunnyside – CP with U1 10000/430 <u>on 1200 kHz</u> , current site (expires 2024-11-16).
1240	WWNS	GA	Statesboro – CP with U1 660/660, new site at 32-27-55/81-49-52 (expires 2026-05-01).
	KLYQ	MT	Hamilton – CP to correct coordinates to 46-15-35/114-09-51 (expires 2025-09-15).
	KDSK	NM	Los Ranchos de Albuquerque – CP for new site at 35-00-40/106-39-50 (expired 202-02-19).
	WBEJ	TN	Elizabethton – CP to correct coordinates to 36-20-06.6, 82-12-54.4 (expires 2027-02-23).
1250	WRBZ	AL	Wetumpka – CP with U1 1000/80, current site at 32-29-06/86-12-25 (expires 2024-12-17).
	KKDZ	WA	Seattle – CP with U2 5000/5000, <u>CoL to Kent WA</u> , day pattern from 0300-LSS, new site (former KMIA-1210 towers) at 47-18-01/122-11-19 (expires 2024-06-25).
1260	KPOW	WY	Powell – CP with U1 5000/210, current site at 44-42-59.9, 108-45-41.3 (expires 2027-01-12).
1270	WACM	MA	Springfield – CP with U1 800/180, new site (diplexed with WSPR-1490) at 42-05-55.3/72-37-43.3 (expires 2026-11-09).
	WWWI	MN	Baxter – CP with U2 12000/5000, current site (expires 2024-04-14).
1280	WSAT	NC	Salisbury – CP with U1 850/130, new site (co-located with WSTP-1490) at 35-41-18.0, 80-29-44.0 (expires 2027-01-05).
	WBWX	PA	Berwick – CP to correct coordinates to 41-04-44/76-15-35 (expires 2026-03-23).
1290	WXKL	NC	Sanford – CP to replace tower (expires 2024-03-26).
1300	KROP	CA	Brawley – CP with U1 1500/480, new site at 33-06-56/115-30-46 (expires 2026-01-26).
	KHTW	TX	Lumberton – CP with U1 1700/20, current site at 30-13-59.0, 94-12-41.5 (expires 2027-01-23).
1310	KKZI	CA	Barstow – CP with U1 1000/80, current site at 34-54-51/117-01-04 (expires 2026-08-31).
	KMKY	CA	Oakland – CP with U4 8000/5000, new site (co-located with KSFN-1510) at 37-49-02/112-17-10 (expires 2026-03-08).
	WIBA	WI	Madison – CP with U2 4800/1400, new site (co-located with WTSO-1070) at 42-59-44/89-19-02 (expires 2024-11-19).
1320	WDIZ	FL	Venice – CP with U4 5000/150, current site, 3 night towers down to 2 (expires 2024-04-16).
	WDMJ	MI	Marquette – CP with U1 5000/140, rebuilt tower at 46-32-42.8/87-26-40.5 (expires 2026-11-13).
1330	WHGM	MD	Havre de Grace – CP with U1 1000/18, current site (expires 2024-07-02).
	WENA	PR	Yauco – CP with U3 1500/1500, new site at 18-01-14/66-51-52 (expires 2026-02-07).

1340	WROD	FL	Daytona Beach – CP with U1 1000/1000, <u>CoL to Port Orange FL</u> , new site at 29-09-17/81-01-19 (expires 2026-08-03).
	WMBN	MI	Petoskey – CP with U1 1000/1000, Valcom antenna at new site at 45-19-18.0, 84-52-39.0 (expires 2026-12-12).
	WQSC	SC	Charleston – CP with U1 600/600, new site (co-located with WQSC-1340) at 32-52-20/79-58-36.
1350	WEGA	PR	Vega Baja – CP with U4 360/2200, current site (expires 2024-06-25).
1360	WMOB	AL	Mobile – CP with U1 1000/59, new site (co-located with WASG-540) at 30-44-45.6, 88-05-39.3 (expires 2027-01-03).
	WPPA	PA	Pottsville – CP with U1 3000/22, current site at 40-41-56.3/76-11-41.8 (expires 2026-11-09).
	KWWJ	TX	Baytown – CP with U4 5000/800, current site at 29-46-29.8/95-00-55.7 (expires 2026-12-15).
1370	WLID	NY	Patchogue – CP to correct coordinates to 40-45-16/72-59-09 (expires 2026-07-18).
	KJCE	TX	Rollingwood – CP with U4 6000/700, new site (co-located with KIXL-970) at 30-19-13/97-37-25.
1380	KXFN	MO	Saint Louis – CP with U4 2000/1000, consolidating to existing night site and co-located with KFUE-850 at 38-31-26.0, 90-14-17.8 (expires 2027-01-23).
	WWNT	NC	Winston-Salem – CP with U1 3000/25, current site at 36-08-55.5, 80-19-09.2 (expires 2027-01-17).
	KQKD	SD	Redfield – CP with U4 1000/400, current site (expires 2025-10-28).
1390	KZGD	OR	Salem – CP with U1 3400/670, <u>CoL to Hubbard OR</u> , new site (co-located with KWBY-940) at 45-10-34/122-50-57 (expires 2025-05-12).
1400	WWTM	AL	Decatur – CP with D1 350 <u>on 1390 kHz</u> , <u>CoL to Mooresville AL</u> , new site at 34-40-21/86-48-51 (expires 2024-09-30).
	WBAT	IN	Marion – CP with 650/650, new site (one tower of WMRI-860) at 40-33-14/85-38-43 (expires 2025-05-31).
	WKPT	TN	Kingsport – CP with U1 1000/1000, replacement tower at 36-32-40.4, 82-31-21.5 (expires 2027-01-19).
	WKAV	VA	Charlottesville – CP with U1 1000/1000, new site (co-located with WCHV-1260) at 38-06-53/78-27-19 (expires 2025-09-15).
	WRDB	WI	Reedsburg – CP with U1 1000/640, new 75' Valcom antenna at current site (expires 2026-03-16).
1420	KFYN	TX	Bonham – CP with U1 130/117, folded unipole at new site 33-33-16/96-13-24 (expires 2025-01-04).
1430	WDAL	GA	Dalton – CP with U1 2100/75, new site (co-located with WBLJ-1230) at 34-45-22/84-57-04 (expires 2024-11-09).
	WYGI	TN	Madison – CP with U1 1500/25, new site (co-located with WYFN-980) at 36-12-27.0, 86-40-23.0 (expires 2027-01-31).
	WNEL	PR	Caguas – CP with new tower, correct coordinates to 18-14-52/66-01-24 (expires 2025-10-12).
1450	WILM	DE	Wilmington – CP with U1 1000/1000, new site (co-located with WWTX-1290) at 39-44-03/75-31-44 (expires 2023-06-13).
	WBSR	FL	Pensacola – CP with U1 1000/1000, new site (co-located with WVTJ-610 and WPNN-790) at 30-27-09/87-14-26 (expires 2024-04-06).
	WTAL	FL	Tallahassee – CP with U1 1000/1000, new site (co-located with WTLY-1270) at 30-25-44/84-19-43 (expires 2025-07-06).
1460	WABQ	OH	Painesville – CP with U1 550/54, new site at 41-38-37/81-21-11 (expires 2026-12-21).
	WGMM	PA	Tunkhannock – CP with U1 2500/86, current site at 41-33-46.3, 75-58-09.7 (expires 2027-01-23).
1470	KUTY	CA	Palmdale – CP with U4 5000/2100, existing site (removing one of four night towers) at 34-39-55.3, 118-00-42.3 (expires 2027-01-10).
1480	WYZE	GA	Atlanta – CP with U1 7000/45, new site (co-located with WMDG-1260) at 33-41-47/84-28-29 (expires 2026-07-20).
	WNKW	KY	Neon – CP with D1 1000, new site at 37-09-59/82-37-13 (expires 2026-05-23).
	WTOX	VA	Glen Allen – CP with U1 1000/10, <u>CoL to Bensley VA</u> , new site (diplexed with WNRN-1590) at 37-30-01.5/77-27-21.9 (expires 2026-11-13).
1490	KIBM	NE	Omaha – CP with U1 970/900, new site (co-located with KCRO-660) at 41-18-47/96-00-36 (expires 2025-07-26).
	WSTP	NC	Salisbury – CP with U1 600/600, new site (co-located with WSAT-1280) at 35-41-18.0, 80-29-44.0 (expires 2027-01-08).

	KBRO	WA	Bremerton – CP with U1 5000/12 <u>on 1480 kHz</u> , correct coordinate to 47-33-53/122-39-30; KARR-1460 and KNTB-1480 will surrender their licenses (expires 2026-03-08).
1500	WAKE	IN	Valparaiso – CP with U5 250/11, <u>CoL to Hobart IN</u> , new site at 41-32-21/87-17-59 (expires 2025-09-29).
1510	WMEX	MA	Quincy – CP with U8 (DA during CH only) 10000/1800, current site (expires 2026-01-04).
	KCTX	TX	Childress – CP with U1 250/2, new site at 34-26-20/100-13-10 (expires 2025-02-18).
1520	WNDO	FL	Apopka – CP with U7 4000/8 (ch 3800), <u>CoL to Fairview Shores FL</u> , new site (co-located with WRSO-810) at 28-34-12/81-26-80 (expires 2026-08-15).
	WRSJ	PR	San Juan – CP with U4 10000/10000, current site at 18-21-10/66-12-08 (expires 2025-08-23).
1540	WNWR	PA	Philadelphia – CP with U1 10000/7 (ch 1200), new site (co-located with WHAT-1340) at 40-00-05/75-12-36 (expires 2025-09-21).
1550	KUAZ	AZ	Tucson – CP with U4 50000/420, new site at 32-05-27.3, 110-49-22.3 (expires 2027-01-30).
	KKCL	CO	Golden – CP with U1 1000/210, new site at 39-46-01.0, 105-07-23.9 (expires 2027-02-22).
	WRHC	FL	Coral Gables – CP with U4 1000/100, Col to Doral FL, new site (co-located with WWFE-670) at 25-51-58/80-28-54 (expires 2025-06-10 but listed inactive in LMS).
1570	WECU	NC	Winterville – CP with U1 2500/200, current site at 35-32-16/77-25-05 (expires 2026-06-20).
1580	WNTF	FL	Bithlo – CP with U1 4700/10, current site at 28-32-12/81-05-08 (expires 2026-09-22).
	WPMO	MS	Pascagoula-Moss Point – CP with U1 1500/115, current site (expires 2026-03-16).
	WNYG	NY	Patchogue – CP with U1 10000/4, new site (co-located with WLID-1370) at 40-45-16/72-59-09 (expires 2026-08-07).
1590	KLIV	CA	San Jose – CP with U2 6200/5000, new site (co-located with KVVN-1430) at 37-19-46.8, 121-52-01.8 (expires 2026-12-05).
1640	KDZR	OR	Lake Oswego – CP for new site (co-located with KPDQ-800) at 45-28-39/122-45-01 (expires 2024-07-29).
1650	KBJD	CO	Denver – CP with U1 10000/1000, new tower at current site at 39-47-56/104-58-14 (expires 2025-05-12).

There are 5 pending applications to modify one of the active CPs listed above:

860	KTRB	CA	San Francisco – Applies to modify tower heights (pending 2024-02-20).
1050	KJBN	AR	Little Rock – Applies to modify CP to U1 2500/19, different new site at 34-36-33.9, 92-14-14.6 (pending 2023-11-08).
1100	KFAX	CA	San Francisco – Applies to modify tower heights (pending 2024-02-20).
1110	WOMN	LA	Franklinton – Applies to modify CP to D1 15000 (ch 8000), still on 1100 kHz and at same new site at 30-44-12.7, 90-12-04.3 (pending 2024-02-13).
	WTJZ	VA	Norfolk – Applies to modify CP to D1 1000 (ch 820), different new site (co-located with WXTG-1490) at 37-01-50.5/76-22-30.8 (pending 2023-12-13).

These 33 applications for CPs are currently pending:

580	KIDO	ID	Nampa – Application for CP with U2 20000/4400, new site (co-located with KBOI-670) at 43-25-43.6, 116-19-46.4, using all 6 KBOI towers for the night pattern (submitted 2024-01-29).
730	WJTO	ME	Bath – Application for CP with U1 1000/23 <u>on 750 kHz</u> , current site at 43-52-35.0, 69-50-49.0 (submitted 2024-02-22).
740	WJIB	MA	Cambridge – Application for CP with U1 1000/13 <u>on 720 kHz</u> , current site (submitted 2024-02-06).
730	WLTQ	SC	Charleston – Application for CP with U1 1100/103 as in current STA, current site at 32-46-24.6, 80-00-55.7 (submitted 2024-02-28).
870	KFLD	WA	Pasco – Application for CP with U1 10000/250, new site (co-located with KONA-610) at 46-10-26.2, 119-04-04.2 (submitted 2024-01-03).
890	KDXU	UT	Saint George – Application for CP with U1 25000/108, new site (co-located with KSUB-590) at 37-41-51.0, 113-10-54.4 (submitted 2024-02-14).
920	KKLS	SD	Rapid City – Application for CP with U1 5000/65, current site at 44-03-42.0, 103-10-36.0 (submitted 2024-01-09).

940	WQVR	MA	Webster – Application for CP with experimental antenna (submitted 2018-05-29).
970	WZAM	MI	Ishpeming – Application for CP with U1 250/62, current site (submitted 2024-01-16).
1000	WMVP	IL	Chicago – Application for CP with U4 50000/37000, new site (diplexed with WCPT-820 night site) at 41-32-32/88-02-05 (center of 2 day towers) and 41-32-29/88-02-03 (center of 4 night towers) (submitted 2023-08-16).
1090	WCRA	IL	Effingham – Application for CP with U1 1000/25, existing site; adding night power once KAAV-1090 CP is approved and KAAV is no longer entitled to protection (submitted 2022-03-11).
1100	WCGA	GA	Woodbine – Application for CP with D1 50000 (ch 10000), current site (submitted 2023-11-02, amended 2024-01-25).
1200	WGDL	PR	Lares – Application for CP with U1 1000/1000, existing site (submitted 1990-04-12, held up over international issues but on the air as STA for many years).
1270	KIML	WY	Gillette – Application for CP with U1 1000/65, new site at 44-14-37/105-32-20 (submitted 2023-12-28, amended 2024-02-23).
1300	KKOL	WA	Seattle – Application for CP with U4 35000/3200, existing site (reducing day power as in STA due to QRM caused at currently licensed 50 kW day power) (submitted 2022-12-19).
1340	WMID	NJ	Atlantic City – Application for CP with U1 1000/1000, new site (co-located with WWAC-1020) at 39-13-45/74-40-54 (submitted 2023-10-17).
1350	WOAM	IL	Peoria – Application for CP with U4 500/1000, current site (submitted 2023-10-11).
1370	KWRM	CA	Corona – Application for CP with U1 950/230, new site (at Chino CA airport) at 33-58-10/117-37-57 (submitted 2021-11-10).
	KFRO	TX	Longview – Application for CP with U1 2000/100, current site (submitted 2023-06-07).
1410	KCAL	CA	Redlands – Application for CP with U4 2000/4000, existing night site at 34-06-39.0, 117.09.14.1 (submitted 2024-02-20).
	WPCC	SC	Clinton – Application for CP with U1 700/74, modified tower at 34-26-43.3, 81-53-20.6 (submitted 2024-02-02).
1430	KRGI	NE	Grand Island – Application for CP with U1 5000/21, current site at 40-52-17.0, 98-16-28.2 (submitted 2024-01-29).
1450	WTKI	AL	Huntsville – Application for CP with U1 1000/1000, new site at 34-43-36.3, 86-35-59.0, replacing identical CP which has expired (submitted 2024-01-26).
	WKIP	NY	Poughkeepsie – Application for CP with U1 1000/1000, current site (submitted 2023-11-16).
1460	WBCU	SC	Union – Application for CP with U1 1000/106, current site at 34-43-11.0, 81-39-45.5 (submitted 2024-01-09).
1480	WSLI	MI	Kentwood – Application for CP with D1 2000, “umbrella” antenna at new site at 42-58-58.0, 85-39-55.0 (submitted 2024-01-17).
	WKDV	VA	Manassas – Application for CP with U1 500/60, <u>CoL to Chantilly VA</u> , new site (current STA site) at 38-51-18.0, 77-22-27.0 (submitted 2024-01-08).
1510	WJKN	MI	Jackson – Application for CP with D1 430, current site (submitted 2024-02-21).
	WRNJ	NJ	Hackettstown – Application for CP with U1 2000/5 (ch 1100), current site at 44-49-00.5, 74-49-36.7 (submitted 2024-02-16).
1530	WCKG	IL	Elmhurst – Application for CP with D1 270, new site at 41-51-46/87-55-26 (submitted 2023-09-08).
1550	WAUR	IL	Somonauk – Application for CP with U5 5000/6, current site (submitted 2023-11-15).
	KMRI	UT	West Valley City – Application for CP with U1 10000/375, new tower at 40-43-15/112-02-06 (submitted 2023-06-22).
1570	WFLR	NY	Dundee – Application for CP with D1 1000, current site (submitted 2024-01-12).



FCC Silent Stations

Current LMS silent list as of March 1, 2024 (104 stations)

540	KNAK-UT	1000	WXTN-MS	WRDZ-IL	1450	KVBV-CO	
567	KGUM-Guam	1010	KXPS-CA	1310	KNPT-OR	WELY-MN	
670	KHGZ-AR	1110	WTOF-AL	1320	WENN-AL	WSNO-VT	
690	KRGS-CO	1140	KNWQ-CA		KNCB-LA	1460	WVOX-NY
	WADS-CT		KXST-NV	1340	WKEY-VA		KARR-WA
	KPET-TX		WHNQ-VA	1350	WFNS-GA		KUTI-WA
700	WARB-AL	1180	KLPF-TX		KRLC-ID	1470	WFNT-MI
710	KBMB-AZ	1190	KDYA-CA		KUSG-Guam	1480	KSBQ-CA
	WYJV-TN		KNEK-LA	1360	KELE-MO		KRXR-ID
720	KDWN-NV	1200	KPSF-CA	1370	KWRM-CA		WRCK-NY
750	WOUF-MI	1220	KQMG-IA	1380	WWNT-NC		WZJY-SC
	KAMA-TX		WREV-NC	1390	WAVP-FL	1490	WIRB-AL
790	KBET-NV	1230	WMQU-MI		WPLM-MA		KXAR-AR
820	KWDP-OR		KSEY-TX		KHOB-NM		KSYC-CA
870	KLSQ-NV		WXCF-VA	1400	WFPA-AL		WSIR-FL
900	KPYN-TX	1240	WBCF-AL		WIRA-FL		WYYZ-GA
	WDLS-WI		WJLX-AL		WFTM-FL		WKRO-IL
920	WNJE-NJ		WPJL-NC		WPRY-FL		KFCR-SD
	KQBU-TX		KRAL-WY		WJZN-ME		KVWC-TX
960	KCGS-AR	1250	WSPL-IL		KBCH-OR		WFAD-VT
	WGRO-FL	1260	WCHV-VA		KKTK-TX	1500	WAKE-IN
	WHAK-MI	1270	KBZZ-NV	1410	WZBR-MA	1520	WTRI-MD
970	WNNR-FL	1280	WIPC-FL	1430	WYGI-TN	1550	KMRI-UT
	WWYO-WV		KSLI-TX	1440	WGMI-GA	1560	WCNW-OH
980	WTOT-FL	1300	KSMD-AR		WRED-ME	1570	KUAU-HI
	KICA-NM		WFFG-FL		KYVL-OR	1590	WABV-SC

These are stations listed by the FCC as silent; what is and is not in fact on the air may differ.

Stations not silent, included erroneously on the list (5)

1180	KLPF	TX	Midland – Has not recently been silent.
1190	KDYA	CA	Vallejo – Silent Dec. 4, 2023; back on the air Dec. 13, 2023.
1220	KQMG	IA	Independence – Silent Jan. 1, 2023; back on the air Dec. 29, 2023.
1500	WAKE	IN	Valparaiso – Silent Mar. 1, 2023; on the air with STA Feb. 28, 2024.
1550	KMRI	UT	West Valley City – Silent Mar. 4, 2023; on the air with STA Feb. 29, 2024.

Stations silent more than 1 year, license cancellation process may be underway (6)

1390	KHOB	NM	Hobbs – Silent June 24, 2022; lightning strike to transmitter.
1490	KSYC	CA	Yreka – Silent July 19, 2022; loss of transmitter site.
1440	WGMI	GA	Bremen – Silent Aug. 28, 2022; loss of transmitter site.
960	KCGS	AR	Marshall – Silent Dec. 8, 2022; transmitter problems.
980	KICA	NM	Clovis – Silent Dec. 31, 2022; loss of transmitter site.
1450	KVBV	CO	Buena Vista – Silent Jan. 31, 2023; loss of transmitter site.

Stations silent less than 1 year (93)

720	KDWN	NV	Las Vegas – Silent Mar. 1, 2023; loss of transmitter site.
1140	KXST	NV	North Las Vegas – Silent Mar. 1, 2023; loss of transmitter site.
970	WWYO	WV	Pineville – Silent Mar. 3, 2023; equipment problems.
1410	WZBR	MA	Dedham – Silent Mar. 5, 2023; death of station owner.
690	KRGS	CO	Rifle – Silent Mar. 15, 2023; transmitter failure.
1230	KSEY	TX	Seymour – Silent Mar. 17, 2023; death of station owner.
540	KNAK	UT	Delta – Silent Mar. 24, 2023; collapsed tower.
960	WHAK	MI	Rogers City – Silent Mar. 31, 2023; financial constraints.
750	KAMA	TX	El Paso – Silent Apr. 4, 2023; need to rebuild studio building.
1230	WXCF	VA	Clifton Forge – Silent Apr. 12, 2023; financial constraints.
1340	WKEY	VA	Covington – Silent Apr. 12, 2023; financial constraints.
750	WOUF	MI	Petosky – Silent Apr. 15, 2023; financial distress.
1300	KSMD	AR	Searcy – Silent Apr. 21, 2023; equipment damage from fire.
1320	WENN	AL	Birmingham – Silent May 1, 2023; transmitter failure.

1400	WJZN	ME	Augusta – Silent May 1, 2023; economic conditions.
1560	WCNW	OH	Fairfield – Silent May 1, 2023; loss of transmitter site.
1190	KNEK	LA	Washington – Silent May 2, 2023; transmitter problems.
1010	KXPS	CA	Thousand Palms – Silent May 5, 2023; problems with generator.
1200	KPSF	CA	Cathedral City – Silent May 5, 2023; problems with generator.
1140	WHNQ	VA	Saint Paul – Silent May 8, 2023 (as WXLZ); financial problems.
980	WTOT	FL	Marianna – Silent May 18, 2023; move of station equipment.
1350	KUSG	GU	Agaña – Silent May 23, 2023; typhoon damage.
1460	KARR	WA	Kirkland – Silent May 24, 2023; pending completion of KBRO CP.
1590	WABV	SC	Abbeville – Silent May 25, 2023; financial and technical issues.
1300	WFFG	FL	Marathon – Silent May 26, 2023; high cost of operating generator.
1490	WSIR	FL	Winter Haven – Silent May 30, 2023; loss of transmitter site.
1110	WTOF	AL	Bay Minette – Silent June 1, 2023; loss of transmitter and STA site.
1280	WIPC	FL	Lake Wales – Silent June 4, 2023; loss of transmitter site.
1430	WYGI	TN	Madison – Silent June 7, 2023; moving transmitter site.
1390	WAVP	FL	Avon Park – Silent June 11, 2023; loss of transmitter site.
1490	KXAR	AR	Hope – Silent June 19, 2023; storm damage.
1490	WYYZ	GA	Jasper – Silent June 23, 2023; loss of transmitter site.
1490	KCFR	SD	Custer – Silent June 26, 2023; equipment failure.
690	KPET	TX	Lamesa – Silent July 2, 2023; death of station owner.
1000	WXTN	MS	Benton – Silent July 15, 2023; technical problems.
1240	WPJL	NC	Raleigh – Silent July 31, 2023; loss of transmitter site.
1400	WFPA	AL	Fort Payne – Silent Aug. 7, 2023; loss of transmitter site.
1490	KVWC	TX	Vernon – Silent Aug. 12, 2023; loss of transmitter site.
1220	WREV	NC	Reidsville – Silent Aug. 25, 2023; storm damage.
790	KBET	NV	Winchester – Silent Aug. 29, 2023; loss of equipment due to bankruptcy.
920	KQBU	TX	El Paso – Silent Aug. 31, 2023; moving transmitter sites.
1460	KUTI	WA	Yakima – Silent Aug. 31, 2023; economic difficulties.
690	WADS	CT	Ansonia – Silent Sept. 1, 2023; loss of transmitter site.
1250	WSPL	IL	Streator – Silent Sept. 1, 2023; evaluating future options.
1350	KRLC	ID	Lewiston – Silent Sept. 1, 2023; loss of transmitter site.
970	WNNR	FL	Jacksonville – Silent Sept. 7, 2023; transmitter failure.
710	WYJV	TN	Smyrna – Silent Sept. 18, 2023; transmitter failure.
1450	WSNO	VT	Barre – Silent Sept. 18, 2023; loss of transmitter site.
1520	WTRI	MD	Brunswick – Silent Sept. 22, 2023; loss of transmitter site.
567	KGUM	GU	Agaña – Silent Sept. 26, 2023; failure of transmitter exciter.
1280	KSLI	TX	Abilene – Silent Sept. 26, 2023; transmitter failure.
1440	KYVL	OR	Medford – Silent Oct. 8, 2023; loss of transmitter site.
1490	WKRO	IL	Cairo – Silent Oct. 8, 2023; technical reasons.
1270	KBZZ	NV	Sparks – Silent Oct. 11, 2023; transmitter problems.
1480	WZJY	SC	Mount Pleasant – Silent Oct. 20, 2023; transmitter theft.
1460	WVOX	NY	New Rochelle – Silent Oct. 26, 2023; loss of transmitter site.
1300	WRDZ	IL	La Grange – Silent Nov. 1, 2023; loss of transmitter site.
1490	WFAD	VT	Middlebury – Silent Nov. 3, 2023; failure of transmitter power supply.
670	KHGZ	AR	Glenwood – Silent Nov. 6, 2023; financial reasons.
900	KPYN	TX	Atlanta – Silent Nov. 6, 2023; financial reasons.
1320	KNCB	LA	Vivian – Silent Nov. 6, 2023; financial reasons.
1400	KKTK	TX	Texarkana – Silent Nov. 6, 2023; financial reasons.
1230	WMQU	MI	Grayling – Silent Nov. 10, 2023, sale to Relevant Radio fell through.
1450	WELY	MN	Ely – Silent Nov. 18, 2023; tower damaged by cell phone equipment.
710	KBMB	AZ	Black Canyon City – Silent Nov. 27, 2023; has lost licensed site.
1350	WFNS	GA	Blackshear – Silent Nov. 28, 2023, lightning strike.
870	KLSQ	NV	Whitney – Silent Dec. 1, 2023 “to check on system operations.”
1370	KWRM	CA	Corona – Silent Dec. 17, 2023; plans to construct CP very soon.
1440	WRED	ME	Westbrook – Silent Dec. 14, 2023, loss of power to transmitter site.
1480	KRXR	ID	Gooding – Silent Dec. 18, 2023; equipment failure.
700	WARB	AL	Dothan – Silent Dec. 31, 2023, ongoing transmitter problems.
920	WNJE	NJ	Trenton – Silent Dec. 31, 2023; ongoing technical and financial issues.
1240	WBCF	AL	Florence – Silent Dec. 31, 2023, to conserve finances while seeking a buyer.
1240	KRAL	WY	Rawlins – Silent Dec. 31, 2023; loss of transmitter site.
820	KWDP	OR	Waldport – Silent Jan. 1, 2024, foreclosure on licensed site.
1310	KNPT	OR	Newport – Silent Jan. 1, 2024, foreclosure on licensed site.

1400	KBCH	OR	Lincoln City – Silent Jan. 1, 2024, foreclosure on licensed site.
1470	WFNT	MI	Flint – Silent Jan. 1, 2024, economic conditions in the market.
1480	WRCK	NY	Remsen – Silent Jan. 5, 2024, loss of network programming source.
1390	WPLM	MA	Plymouth – Silent Jan. 7, 2024; awaiting transmitter parts.
1400	WPRY	FL	Perry – Silent Jan. 7, 2024; hurricane damage.
1140	KNWQ	CA	Palm Springs – Silent Jan. 17, 2024; storm damage.
1490	WIRB	AL	Level Plains – Silent Jan. 18, 2024; damage to transmitter and antenna.
1380	WWNT	NC	Winston-Salem – Silent Jan. 19, 2024 (or Aug. 4, 2023?), awaiting build of CP.
1260	WCHV	VA	Charlottesville – Silent Feb. 1, 2024; electrical system upgrades.
1240	WJLX	AL	Jasper – Silent Feb. 2, 2024; transmitter and 200' tower both stolen.
1360	KELE	MO	Mountain Grove – Silent Feb. 2, 2024; transmitter failure.
1480	KSBQ	CA	Santa Maria – Silent Feb. 4, 2024; transmitter damage in thunderstorms.
960	WGRO	FL	Lake City – Silent Feb. 7, 2024; voltage problem at tower site.
900	WDLS	WI	Wisconsin Dells – Silent Feb. 10, 2024; failed isocoupler.
1400	WFDM	FL	Fort Walton Beach – Silent Feb. 12, 2024; lightning strike.
1400	WIRA	FL	Fort Pierce – Silent Feb. 13, 2024; complaints of QRM to another station.
1570	KUAU	HI	Haiku – Silent Feb. 24, 2024; negotiations over lease for tower site.

From the Listserve

Participants in the Listserve know that some conversations are of longer-term interest and we'd like to archive some of them in *DXtra News*. Here's a sample of what I have in mind – if you'd like to curate some of these conversations and help with cleaning them up for posterity please let me know and we can chat about what's involved. NRCDXNews@gmail.com – DY.

KiwiSDRs of Use to East Coast U.S. and Canada DXers

Mark Connelly WA1ION Thu 2024-02-29 0611 UTC

I put this together as a quick start link page to get to receivers that are at least semi-competent: <https://www.qsl.net/wa1ion/doc1/kiwisdr.htm>.

Anyone who has surfed around on remote SDRs knows that many of the receivers are noise-plagued and/or massively lacking in MW sensitivity.

Periodically links may be added, or they may be dropped if sites become long-term inaccessible. Page will be updated when DXpedition set-ups such as Lubec come online.

Tons of static here tonight with a line of storms east of the Delmarva peninsula and due south of here so in "fat city" for QRN signal pick-up.

Picked off a few reverse TAs on Ireland and Canary Islands SDRs. WINS 1010 NY doing quite well across the "pond" at about 0500 UTC.

- [KiwiSDR Worldwide Links](#)
- [Canary Islands - Fuerteventura Island \(EA8BFK\)](#)
- [Ireland - Malin Head, Donegal \(EI0CF\)](#)
- [Ireland - northwest](#)
- [Iceland - Bjargtangar](#)
- [Canada - Stratford, PEI \(VY2HF\)](#)
- [USA - Rockport, ME \(WA2ZKD\)](#)
- [USA - E. Falmouth, MA \(KB1VWC\)](#)
- [USA - Westminster, MD \(W3HFU\)](#)
- [USA - Elizabeth City, NC \(KU4BY\)](#)
- [USA - Boca Raton, FL \(W1NEJ\)](#)
- [USA - Galveston, TX \(N5FOG\)](#)
- [USA - Brownsville, TX \(TWR\)](#)
- [Bonaire - Kralendijk \(TWR\)](#)
- [Brazil - Pardino, SP \(PY2DN\)](#)



Loyd Van Horn W4LVH Thu 2024-02-29 0742 UTC

Will be firing up a new Kiwi2 here in Mandeville with a terminated super loop. Still working out the design of the antenna but looks like it will be oriented 316°/136° which in theory should give a good look to Colombia/Venezuela and maybe even Brazil.

Details to come.

Brent Taylor VY2HF / W1PJ Thu 2024-02-29 1032 UTC

Thanks for including my SDR on the list, Mark. I will continue to work on antenna improvements as weather permits. If anyone needs the password for extended listening, I would be happy to share it on request.

Mark Connelly WA1ION Thu 2024-02-29 1549 UTC

Sounds good Loyd. When you have it set up the way you want, pass along the link on the email lists and NRC Facebook. I'll give it a "test drive" some night. The link will be added to the useful receivers page.

Mark Connelly WA1ION Thu 2024-02-29 1606 UTC

Thanks Brent. Especially during the winter your site can give us a peek at what TA DX is doing up to an hour before the propagation gets into eastern MA, RI, CT, and LI NY.

When you can hold the noise back the DX from your site has been interesting. So far you have the farthest east North America site.

Still waiting for somebody to activate Newfoundland, Bermuda, Barbados, north coast Brazil, Azores, Ascension, Falklands etc. (dream on!).

If anyone out west wants to put together a "best SDRs for West Coast DXing" page, that would be great. Obviously Masset goes on there and probably something from Hawaii, but who are the other serious players? I guess there's a good one at one of the former marine communications facilities in California. There are also temporary ones at Grayland as we occasionally have Lubec here in the northeast.

There are so many useless KiwiSDR sites that you really need a weeding out process to get to ones that can actually DX. When you are trying to sort out unIDs on one's own receiver or attempting to evaluate propagation, you don't need to go to a half dozen "dud" SDRs before finding a helpful one.

Paul B. Walker, Jr. Thu 2024-02-29 1735 UTC

I think if DXers want SDRs in prime locations with prime set ups and they expect to be using them, they should help pay for them. People will bemoan how one set up isn't ideal or how it'd be nice to have a set up there, but make no comment about maybe contributing to upgrading an SDR or making one happen somewhere.

An SDR in my remote part of western Alaska would be amazing. absolutely amazing, especially on HF. But there's a few obstacles that have to be overcome in terms of planning, location, power and connectivity. and there's no way I can afford or figure that all on my own. Because if a set up like that was to be done up here, it'd have to be done right with top notch gear for a number of reasons ... or it's not worth doing.

Mark Connelly WA1ION Thu 2024-02-29 1809 UTC

For me Newfoundland would be the most useful site so I'd think about contributing to a good set-up there. I would also consider assisting a Bermuda operation.

Others, of course, may have different objectives.

Karl Zuk N2KZ Thu 2024-02-29 1757 UTC

My two cents - from admittedly - an observing novice. My favorite remote receivers:

Medium Wave Circle's Clashmore, Scotland Kiwi. This masterful system, designed by Martin Hall, includes quite a remarkable Beverage farm in a location very close to the legendary Sheigra. The Beverages switch around automatically on a daily schedule to maximize the site's potential. The possibilities are endless. The Circle is simply wonderful group of people. <https://mwcircle.org> This does require a membership to the Medium Wave Circle which you will not regret! Very highly recommended!

Finbar O'Connor's Kiwi at Malin Head, Ireland at Ireland's very northern tip: <http://malinheadkiwi.hopto.org:8073> This was the chosen location for a Lloyd's of London telegraphy site around 1900. Some insight on Finbar: <https://www.amateurradio.com/tag/ei0cf/>. A truly fascinating and amazing human being. I have been to Malin Head. It features a breathtaking view and location. Brilliant ears on this one, too. Especially good for longwave adventures.

The ZL1ROT Kiwi near the Radio New Zealand Pacific shortwave site on North Island. Owned by the Rotorua Amateur Radio Club, this is a wonderful place to listen from the perspective of ZL and Eastern Australia. Club link: <https://www.nzart.org.nz/contact/branches/33> Kiwi link: <http://zl1rot1.zapto.org:8083> This is a very popular Kiwi and is often all booked up.

All of these installations are priceless gifts to those who don't enjoy fine locations, great locations and endless real estate. I would never enjoy this kind of DXing without them. Many thanks to all involved!

Mark Connelly WA1ION Thu 2024-02-29 1946 UTC

The Malin Head (Donegal) one is on my list. In fact, I tuned in a nice clear signal from WBBR on 1130 last night. I still remember its WNEW days as in 1977 when I heard it blasting into Sligo on my Ireland trip. It was playing Carly Simon's "Nobody Does It Better" from a James Bond movie. Sounded like a local - a monster signal into the western shore of Ireland for sure.

For now I'll hold off on adding membership-required sites but thanks for the mention of the Scotland SDR. If this kind of thing (pay to play) becomes a trend, as it well may, I will put links in for those sites along with how to participate. This will follow the "freebie" list as not to cause confusion.

If people are using other remote receivers, not necessarily Kiwi, some discussion of what those are could be helpful. Some Perseus and other hardware is online I think. Is Global Tuners still a thing and is anyone using it? I think a lot of resources are out there for ham radio and some for aeronautical/utility monitoring, not sure what set-ups do MW acceptably well. The "beauty" thing would be if some of these other radios are in locations poorly represented in KiwiSDR-dom.

If anyone is starting a Pacific list, that New Zealand SDR should definitely go on it.

I wish there was a bit more Southern Hemisphere representation on the Atlantic side of things. The South Africa site I tried last night couldn't even get 828, a station that can sometimes be heard here on Cape Cod. NE Brazil could use some serious "ears" too, could solve a lot of unIDs both from South America and Africa.

For me Newfoundland would be the most useful site so I'd think about contributing to a good set-up there. I would also consider assisting a Bermuda operation.

Loyd Van Horn W4LVH Thu 2024-02-29 2249 UTC

I would gladly contribute funds to anyone that wants to put a really high-quality Kiwi/Antenna combo in Central America. Something that has a good look at maybe the Yuc. Peninsula and all things south including a look into Northern Colombia/Ecuador maybe even Peru. That side of Latin America is woefully underserved but would be such a big help to so many of us that chase these Latins!

Loyd Van Horn W4LVH Thu 2024-02-29 2250 UTC

I will also eventually (the plan right now, at least) be adding a KiwiSDR here at my house as well, using the PA0RDT MiniWhip at 45 . It is whisper quiet, has a good amount of gain and has generally been a strong performer here so far.

Steve VE6WZ Thu 2024-02-29 2252 UTC

I do operate a Kiwi at VE6WZ: <http://162.248.34.28:8073/>

It is a long way from the "front row" Asian seat that Walt's setup has at Masset. In fact it's about 1,000km inland :-)

The "problem" with my Kiwi is the usual antenna is either the West DU or Europe Beverage pair instead of the Asia pair. Both are very directive so won't do much in other directions. But the radio is pretty quiet.

The rx antennas switch automatically from EU to DU at around 800ut.

Bjarne Mjelde Fri 2024-03-01 0618 UTC

Further to Paul's post: KiwiSDR users should be aware that maintaining a KiwiSDR for proper use ("proper" meaning full-time operational) is a hassle, especially if the owner isn't at the same site. Both in practical terms (antennas, RFI, stable power, internet connectivity) and expenses. Once a Kiwi owner accepts or expects donations, the users will obviously expect the most return for their money - accessibility. I hosted two Kiwis at the KONG HQ a few years, and I did get financial support, but for a number of reasons (and in the end hw failure) the service ended. I'll likely buy the Kiwi2 when the next production run starts, but for my own use.

Brent Taylor VY2HF / W1PJ Fri 2024-03-01 1654 UTC

Last night I received a report that my KiwiSDR was unreachable, and indeed when I investigated locally it appears as if the Ethernet port on the Beaglebone Green has given up the ghost. I have ordered a new computer board for it, but that will take some time to get here.

Accordingly, my KiwiSDR will be offline until a replacement arrives and I have installed it.

Actually, after some further troubleshooting I discovered a problem with an Ethernet switch, so I'm back online. If anyone wants a Beaglebone Green I'll have one for sale in a couple of weeks, hi hi.

Unreported Domestic Stations

The current list of stations not reported to DDXD since Volume 67 (181, through 91-12):

550	KNUI-HI	1190	WPSP-FL	WGAU-GA	WSTU-FL
560	CBDN-YT	1210	KZOO-HI	WKCB-KY	WTAL-FL
570	CKWL-BC	1220	WERM-AL	WAML-MS	KNOC-LA
580	WLVA-VA		WSRQ-FL	KLID-MO	WCJU-MS
590	CFTK-BC		WZOT-GA	WPOL-NC	WLAR-TN
670	WYLS-AL		KQMG-IA	KBNW-OR	1460 WELZ-MS
680	KBRD-WA		WOEG-MS	KRBA-TX	1470 WNWF-AL
740	KCIK-HI	1230	WAYX-GA	KUOW-WA	WCHJ-MS
760	KGU-HI		KLCB-MT	WMON-WV	KFMZ-MO
800	KAGH-AR		KRYN-OR	1350 WRKM-TN	KMAL-MO
	KVOM-AR		WMLR-TN	1360 KFFA-AR	1480 WNKW-KY
820	WSWI-IN		WAKI-TN	WGJK-GA	KYWL-MT
840	KPEN-AK		KCOH-TX	WFFF-MS	KNTB-WA
850	WLRC-MS		CHFC-MB	1370 KAWW-AR	1490 WFZX-AL
860	KWRF-AR		CFFB-NU	1380 WGYV-AL	WIRB-AL
	KFST-TX	1240	WJLX-AL	WVSA-AL	KXAR-AR
	CHAK-NT		KNSN-CA	1400 WPRY-FL	KOTN-AR
870	CFBV-BC		WBGC-FL	WRZX-GA	KLZN-CA
880	WAMI-AL		WWNS-GA	WSEG-GA	WCHM-GA
900	WOZK-AL		KEWE-HI	WBIP-MS	WOMI-KY
	KZPA-AK		WEBQ-IL	WFOR-MS	WSIP-KY
920	WXKD-AL		KASO-LA	WJQS-MS	KRUS-LA
930	KTKN-AK		WMIS-MS	KFJL-OR	WCLD-MS
	KBAI-WA		WMSO-MS	KBCH-OR	KHTC-MT
950	KRRP-LA		KBEL-OK	WYUP-PA	WTQS-SC
	WHSY-MS		KRDM-OR	WGAP-TN	WCOR-TN
960	KABN-AK		WFUZ-PA	KEBE-TX	KNEL-TX
	WBMC-TN		CKMK-BC	WBTH-WV	KJNT-WY
970	WFQY-MS		CJOR-BC	CHNL1-BC	1500 WQMS-MS
	WMPW-VA		CFNI-BC	1410 WYIS-GA	WSMX-NC
980	WTOT-FL		CJAR-MB	WVVB-TN	WDEB-TN
	WDYN-GA	1250	WSRA-GA	KHCH-TX	1510 WJKN-MI
990	WABO-MS		WKDX-NC	1420 WMYN-NC	1520 WINW-OH
	CBDB-YT	1260	KCCB-AR	KFYN-TX	1550 WLTI-IN
1040	KLHT-HI	1270	KIIK-MO	WXGM-VA	WUCO-KY
1050	WJCM-FL	1290	WJBI-MS	KRIZ-WA	1560 WBOL-TN
	WTWG-MS		WTYL-MS	1430 KVHZ-AK	1570 WOKC-FL
1070	KBCL-LA	1310	KZYP-AR	KHBM-AR	WIZR-MS
1100	KRKE-NM	1330	KGLD-TX	WWSZ-GA	WLEE-MS
1110	WOMN-LA		WHNK-VA	KMRC-LA	1580 WNPZ-TN
	WYMW-WV		KGRG-WA	KKOZ-MO	1590 WABV-SC
1120	WHOG-AL	1340	WSBM-AL	KROL-MO	1600 KTTN-MO
1140	KVLI-CA		WMHZ-AL	1440 WOCJ-MS	WRSB-NY
1150	WXKO-GA		KCAT-AR	WBLA-NC	
	WONG-MS		KQIS-AR	1450 WZGX-AL	
	KBPO-TX		WPBR-FL	KNHD-AR	

That's it for the first issue of DXtra News! See you next time.