



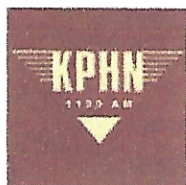
# Joint Radio/TV Clubs



## Convention 2016



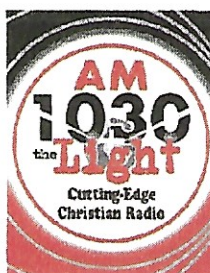
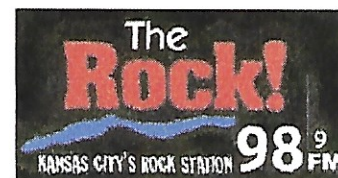
Kansas City, Missouri



September 9 to 11



Hayatt Place Airport Hotel

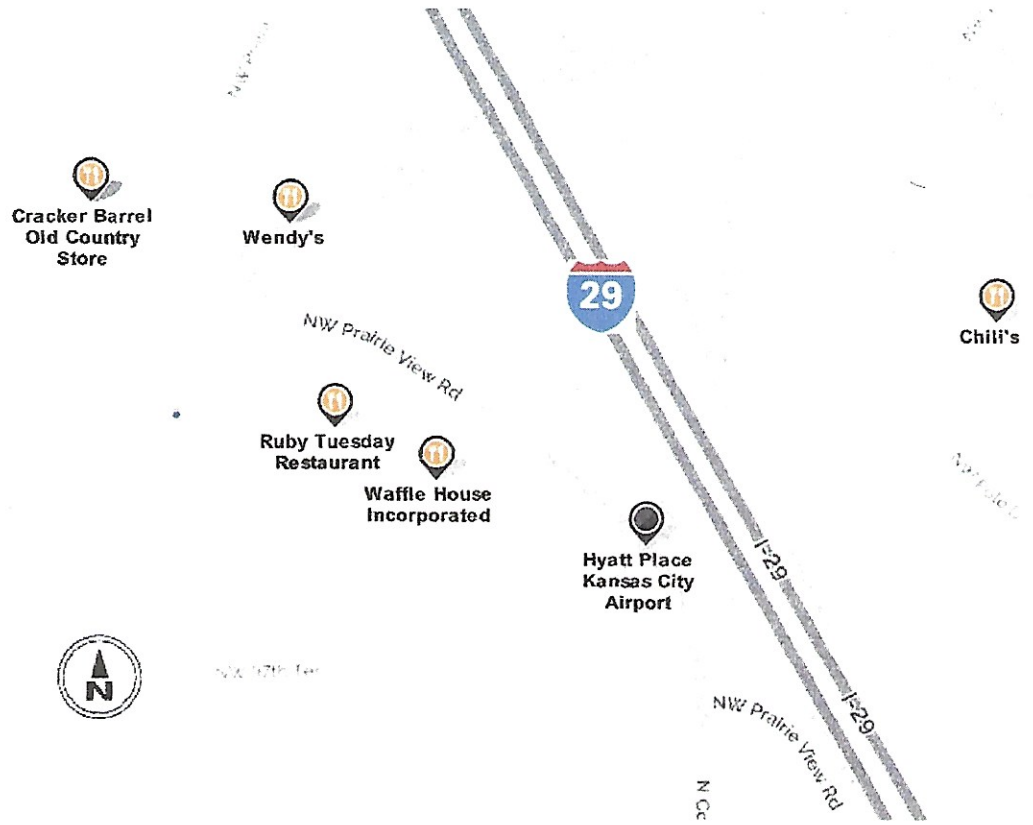


# Dining Options

I-29 Exit 10 -

Tiffany Springs Parkway (Hotel)

- Waffle House
- Ruby Tuesday
- Wendys
- Cracker Barrel
- Chilis



I-29 Exit 8 -

NW Barry Road

(Next interchange south of hotel)

- Minsky's Pizza
- Applebee's
- Chili's
- Jimmy John's
- Buffalo Wild Wings
- Granite City Brewery
- Smokehouse BBQ
- Noodles and Company
- Rainbow Restaurant
- Outback Steakhouse



### Thursday, September 8 2016

Guests arrive by air (free airport shuttle), train, bus and cars

6:00 Registration in meeting room. HOSTS: Dale Hamm, Ernie Wesolowski, Carl Dabelstein, Steve Francis and Carl Mann. **Questions and Info:** 402-319-0997

Dinner on your own at near-by restaurants (see enclosed maps)

### Friday, September 9 2016

6:30-9:00 Breakfast in hotel lobby: free for hotel guests

8:00-9:00 Registration in front lobby, Dale, Ernie, Carl, Steve and Carl  
Meeting room opens – convention begins

9:00 Assemble outside **back door** of hotel for car pools to tours

9:45 1. Tour of WDAF-TV 4 – **Carrie Hibbeler**

2. Tour of KMBZ-980/KCSP-610 studios – **John Morris CE**

3. Lunch at either McDonalds, Runza or Taco Bell

4. Tour of Cumulus Media – KCMO-710 – **Dennis Eversoll CE**

3:00 5A. Visit Truman Presidential Library (\$8.00 fee. Allow 1.5 hours)

5B. Drive through downtown Kansas City, then back to hotel

4:15 **Glenn Hauser** (from Oklahoma) – Questions and Answers (meeting room)

6:00 Pizza party at Minsky's Pizza, 7007 NW Barry Rd, I-29 Exit 8 then SW (included in registration)

8:00 **IRCA** annual business meeting (meeting room) – **Nick Hall-Patch**

8:30 Gathering in meeting room

12:00M Good night

### Saturday, September 10 2016

6:30-9:00 Breakfast in hotel lobby: free for hotel guests

8:00 Meeting room opens

8:30 "Tech Talks" (meeting room)

1. **Mark Durenberger** – The Ultimate DX: The Square Kilometer Array (~8:45)

2. **Randy Schulze** – The Story of the FCC's Grand Island Monitoring Station (~9:10)

3. **Nick Hall-Patch** – A Review of Practical MW/LW Antennas (~10:00)

4. **Mark Durenberger** – Remote Control of Flag/Delta Antennas (~10:40)

5. **Neil Kazaross** – FM Antenna Fundamentals (~11:00)

6. **Dave Fischer/Skip Dabelstein** – The Nebraska Beverage Project (~11:20)

7. **Mike Lantz** – The Miami Radio Hotbed (~12:10)

12:30 Lunch on your own

1:30 A. Drive by the WHB-810 and KCMO-710 transmitters and Truman Sports Complex

B. Active D-KAZ antenna demo – back yard

C. **Gregg Ottinger** – History of Music Surveys (meeting room)

2:20-4:30 Discussion plus buy, sell and trade Radio Music Surveys and stickers

5:15 Gather outside the **front lobby** for a group photo.

5:30 Group Photo(s)

6:00 Gathering Banquet in meeting room (included in registration)

Guest speaker: **Dan Verbeck**, newsman from KFEQ, KCUR-FM and KMBZ radio.

8:30 **NRC** business meeting in meeting room – **Paul Swearingen/Shawn Axelrod**

Memorial Service

8:50 Auction in meeting room – **Paul Swearingen, Rick Dau and Todd Skaine**

12:00M Good night

### Sunday, September 11 2016

6:30-9:00 Breakfast in hotel lobby: free for hotel guests

9:15 The Gathering Quiz. Door prizes. Winner prize.

12:00N 2016 gathering ends. Have a safe trip home. See you next year!  
On your own suggestions:

1:00 Kansas City Chiefs vs San Diego Chargers football game.

National World War 1 Museum. Main Street at 27<sup>th</sup> St, then Westward

Kansas City Union Station – 30 W Pershing Rd (Main St).

Aribia Steamboat Museum – 400 Grand Blvd. – fee

FCC Complaint Office: Island at the center of the Missouri River

## KANSAS CITY AM DIAL

KWTO	560	Springfield, MO	News/Talk	164.1 mi. 2
WIBW	580	Topeka, KS	News/Talk	65.8 mi. 4
KXSP	590	Omaha, NE	Sports	172.3 2
KCSP	610	Kansas City, MO	Sports	7.5 mi. 5
KFEQ	680	Saint Joseph, MO	News/Talk	53.6 mi. 4
KCMO	710	Kansas City, MO	Talk	17.0 mi. 5
KCCV	760	Overland Park, KS	Religious	3.5 mi. 5
WHB	810	Kansas City, MO	Sports	15.9 mi. 5
KKOW	860	Pittsburg, KS	Country	114.9 mi. 2
KAAN	870	Bethany, MO	Classic Hits	84.2 mi. 1
KMVG	890	Gladstone, MO	Religious	9.1 mi. 5
KMBZ	980	Kansas City, MO	Talk	4.2 mi. 5
KCWJ	1030	Blue Springs, MO	Religious	17.3 mi. 5
KEXS	1090	Excelsior Springs, MO	Religious	21.8 mi. 5
KFAB	1110	Omaha, NE	News/Talk	160.4 mi. 1
KCXL	1140	Liberty, MO	Talk	14.0 mi. 5
KCTO	1160	Cleveland, MO	Spanish	27.9 mi. 4
KDMR	1190	Kansas City, MO	Religious	2.6 mi. 5
KYYS	1250	Kansas City, KS	Regional Mexican	9.1 mi. 5
KGNM	1270	Saint Joseph, MO	Classic Hits	47.8 mi. 2
KLWN	1320	Lawrence, KS	News/Talk	40.4 mi. 2
KDTD	1340	Kansas City, KS	Regional Mexican	7.1 mi. 5
KMRN	1360	Cameron, MO	Country	45.3 mi. 1
KCNW	1380	Fairway, KS	Religious	6.8 mi. 5
KKLO	1410	Leavenworth, KS	News/Talk	23.2 mi. 4
KOKO	1450	Warrensburg, MO	Oldies	49.4 mi. 1
KCZZ	1480	Mission, KS	Spanish	7.9 mi. 5
KCTE	1510	Independence, MO	Sports	5.7 mi. 5
KESJ	1550	Saint Joseph, MO	Sports	53.6 mi. 1
KLEX	1570	Lexington, MO	Religious	39.4 mi. 1
KPRT	1590	Kansas City, MO	Gospel Music	1.2 mi. 5
KWOD	1660	Kansas City, KS	Sports	4.2 mi. 5

KANSAS CITY FM DIAL

KJTY	88.1	Topeka, KS	Religious	41.4 mi. 3
KJNW	88.5	Kansas City, MO	Christian Contemporary	3.8 mi. 5
K205ER (KJCV)	88.9	Raytown, MO	Religious	4.6 mi. 4
KCUR	89.3	Kansas City, MO	Public Radio	4.1 mi. 5
KJCV	89.7	Country Club, MO	Religious	47.3 mi. 1
KKFI	90.1	Kansas City, MO	Variety	4.1 mi. 5
KGSP	90.5	Parkville, MO	Unknown	10.3 mi. 1
KTBG	90.9	Warrensburg, MO	Alternative Rock	25.2 mi. 4
KANU	91.5	Lawrence, KS	Public Radio	39.2 mi. 3
KWJC	91.9	Liberty, MO	Christian Contemporary	9.4 mi. 4
KCCV	92.3	Olathe, KS	Religious	18.3 mi. 4
K224ET (KDMR) (CP)	92.7	Kansas City, KS	Religious	4.9 mi. 3
KMXV	93.3	Kansas City, MO	Top-40	4.9 mi. 5
KFKF	94.1	Kansas City, KS	Country	4.9 mi. 5
KCMO	94.9	Shawnee, KS	Classic Hits	4.6 mi. 5
KCPZ (LPFM)	95.3	Kansas City, MO	Gospel Music	4.4 mi. 4
KCHZ	95.7	Ottawa, KS	Top-40	25.8 mi. 4
KRBZ	96.5	Kansas City, MO	Alternative	4.4 mi. 5
KLRX	97.3	Lee'S Summit, MO	Christian Contemporary	4.6 mi. 5
KNIU (LPFM)	97.7	Kansas City, KS	Unknown Format	4.3 mi. 4
KMBZ	98.1	Kansas City, KS	News/Talk	4.4 mi. 5
KQRC	98.9	Leavenworth, KS	Rock	4.4 mi. 5
K257DZ (KCTE)	99.3	Kansas City, MO	Sports	4.9 mi. 4
KZPT	99.7	Kansas City, MO	Hot AC	4.4 mi. 5
KDVV (CP)	100.3	Topeka, KS	Rock	73.3 mi. 1
KPPZ (LPFM)	100.5	Kansas City, MO	Christian Contemporary	4.4 mi. 4
KMZU	100.7	Carrollton, MO	Farm	64.8 mi. 1
KCFX	101.1	Harrisonville, MO	Classic Rock	4.4 mi. 5
K268CF (KCCV)	101.5	Kansas City, MO	Religious	4.6 mi. 5
KCKC	102.1	Kansas City, MO	Adult Contemporary	4.6 mi. 5
K273BZ (KCMO)	102.5	Bonner Springs, KS	Classic Hits	4.4 mi. 5
K275BQ (KCXL)	102.9	Kansas City, MO	Talk	4.6 mi. 5
KPRS	103.3	Kansas City, MO	Urban Contemporary	4.9 mi. 5
K279BI (KCFXHD2)	103.7	Kansas City, MO	Sports	4.4 mi. 5
KBEQ	104.3	Kansas City, MO	Country	4.1 mi. 5
KCJK	105.1	Garden City, MO	Adult Hits	4.6 mi. 5
KKJO	105.5	Saint Joseph, MO	Hot AC	50.9 mi. 3
KKSW	105.9	Lawrence, KS	Top-40	48.0 mi. 3
WDAF	106.5	Liberty, MO	Country	3.8 mi. 5
KMJK	107.3	No. Kansas City, MO	Urban Contemporary	24.6 mi. 4
K300CH (KCFX)	107.9	Lees Summit, MO	Classic Rock	4.4 mi. 5

## KANSAS CITY TELEVISION STATIONS

4	WDAF	KANSAS CITY, MO	FOX	3030 Summit St
5	KCTV	FAIRWAY, KS	CBS	4500 Shawnee Mission Pkwy
9	KMBC	KANSAS CITY, MO	ABC	6455 Winchester Ave
19	KCPT	KANSAS CITY, MO	PBS	125 East 31 <sup>st</sup> St
29	KWCE	KANSAS CITY, MO	WE	4720 Oak St
38	KMCI	KANSAS CITY, MO		4720 Oak St
41	WSHB TV	KANSAS CITY, MO	NBC	4720 Oak St
50	KPXE	KANSAS CITY, MO	ION	4720 Oak St
62	KSMO	FAIRWAY, KS	HTV	4500 Shawnee Mission Pkwy

## Midlands News

# Historic Nebraska FCC Station to Close

BY LAURIE NILES  
WORLD-HERALD STAFF WRITER

Since 1929, the government has listened in on radio transmissions from around the world from a building in the open countryside west of Grand Island, Neb.

After more than 65 years of operation, the Federal Communications Commission's Grand Island radio monitoring station — the oldest in the country — is scheduled to close in June.

The closing is part of a nationwide reduction in FCC offices and personnel. Three of the commission's six regional offices, nine of its 25 field offices and all 13 of its monitoring stations will close, said Dennis Carlton, FCC regional director in Kansas City, Mo.

The closings will reduce the overall number of FCC employees by about 120. The Department of Commerce built the Grand Island monitoring station on a 240-acre site in 1929, five years before the FCC was established. Its building is on the National Register of Historic Places.

The station monitors anything licensed by the FCC to make certain that licensees don't stray from assigned frequencies and power, either accidentally or intentionally. And the station locates

and resolves interference problems. It generally doesn't monitor content.

The station first was built to monitor "high-frequency" signals, Carlton said. Those signals would include such things as international radio broadcast stations and ships at sea.

Communication has evolved so much since then that the "high frequency," or HF, signals tracked by such stations now are considered to be at the low end of the spectrum. That is especially true when compared with higher frequencies used by cellular phones, microwaves and satellites.

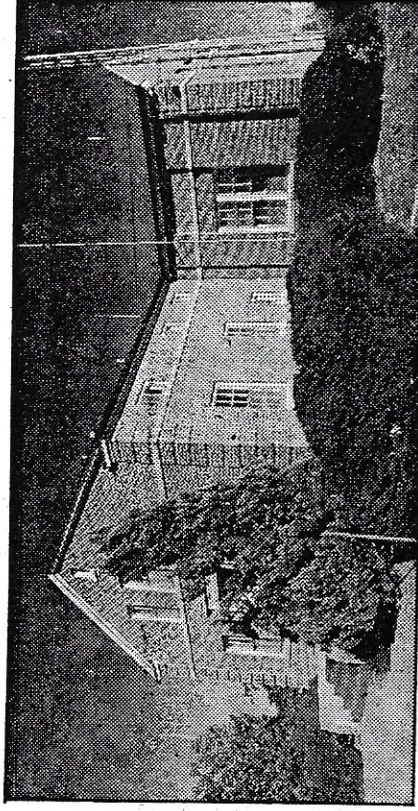
The FCC monitoring stations such as the one at Grand Island track signals at 30 megahertz and below.

"Those frequencies tend to travel long distances," Carlton said. "You can hear them all around the world."

In addition to the low frequencies that can be monitored worldwide, the station also monitors regional frequencies. Those would include frequencies used by airplanes, commercial radio, television and amateur radio.

The first station was built in Grand Island because of a lack of interference from large cities, among other reasons.

"It was centrally located, and the ground conductivity is good," said Re-



RICH JANDA/THE WORLD-HERALD  
**CLOSING SOON: This building, which houses an FCC radio monitoring station, is on the National Register of Historic Places. The station is to close in June.**

becca Willman, a spokeswoman for the FCC in Grand Island. "It was a good location to pick up signals from around the world."

Monitoring stations locate the origin of a variety of broadcast signals, including commercial radio stations, listen for violations of FCC and international regulations and resolve interference problems. The monitoring stations have been used to help find ships in distress and downed airplanes.

During World War II, the Grand Island station served as a training ground for 247 people in the Radio Intelligence Division, which scanned for transmissions relating to espionage activities.

With the closing of all its monitoring stations, the FCC will build a national automated monitoring network. The Grand Island station, like the others, will be replaced by unmanned computers with high-frequency direction finders.

"There's still a lot of activity on HF," Carlton said, "but we are recognizing that we can still keep that network but do it with new technology."

"The sites will still have an antenna but it will all be removed across the country to Maryland," said Jim Berrie, engineer in charge of the Grand Island station.

The 11 employees at Grand Island will be dismissed or relocated.

As for what will happen to the building and the land around it after the station closes, "we have no clue," Ms. Willman said.

After the station closes, some of the land will be used for the remote antenna, which probably will require a 40-acre field, Ms. Willman said. The rest of the land may be used as a buffer for the antennae or be sold to another federal agency.

Any agency taking over the land will have to work within a number of constraints.

The building must be preserved because it is on the national historic register.

"Also, you can't build a 50-foot high rise that wipes out our ability to receive signals," Ms. Willman said.

METRO KANSAS CITY AM RADIO

SPT	610	KCSP	7000 Squibb Rd, Mission, KS	913-744-3600
		KCSP	38-59-03N 94-37-42W	80th & Mission Rd
NWS	710	KCMO	5800 Foxridge Dr, #600, Mission, KS	913-514-3000
TLK		KCMO	39-19-08N 94-29-48W	I-435 Exit 45; Mo-291 East 1 mi; N-1 Mile
REL	760	KCCV	10550 Barkley St, Overland Park, KS	913-642-7770
		KCCV	39-02-26N 94-30-34W	KMBZ TOWER W of I-435
SPT	810	WHB	6721 W 121st St, Overland Park, KS	913-344-1500
		WHB	39-18-30N 94-34-30W	MO-291, NE Cookingham Dr
GOS	890	KGGN	1734 E 63rd St #600, KC, MO	816-333-0092
		KGGN	39-11-04N 94-27-28W	I-35 Exit 13; S Liberty Pkwy East; Hughes Rd Sout
NWS	980	KMBZ	7000 Squibb Rd, Mission, KS	913-744-3600
TLK		KMBZ	39-02-35N 94-30-30W	W of I-435 @ E 47th St KCCV Tower
REL	1030	KCWJ	18920 E Valley View Pkwy, #C, Blue Springs, MO	816-795-6826
		KCWJ	39-02-44N 94-14-06W	N of I-70, Exit 21
REL	1090	KEXS	201 Industrial Park Rd, Excelsior Springs, MO	816-630-1090
		KEXS	39-17-39N 94-15-37W	NE 112th St; E of US-69 2 Miles
SS	1160	KTCO	310 LaFrenz Rd, Liberty, MO	816-792-1140
MEX		KTCO	38-40-26N 94-36-28W	E of US-69 @ 274 St East (state line)
TLK	1140	KCXL	310 LaFrenz Rd, Liberty, MO	816-792-1140
		KCXL	39-14-18N 94-23-59W	E of US-69; NE of MO-291 (at studios)
REL	1190	KPHN	1100 Main St #1950 (1212 Baltimore)	816-630-1090 or 816-221-0206
		KPHN	39-03-37N 94-30-37W	S of I-70 @ 33rd St
SS	1250	KYYS	1701 S 55th St, KC, MO	913-287-1480
		KYYS	39-11-06N 94-27-28W	I-35 Exit 14; S Liberty Pkwy to Highes: South
SS	1340	KDJD	1701 S 55th St	913-287-1480
		KDJD	39-06-50N 94-40-45W	I-635 & State Ave
REL	1380	KCNW	4535 Metropolitan Ave	KC, MO 913-384-1380
		KCNW	39-04-19N 94-40-58W	W of I-635 # studios
REL	1410	KKLO	324 Santa Fe Sr, Leavenworth, KS	913-276-0555
		KKLO	39-16-24N 94-54-27W	US-73m W on Munci Rd
REL	1480	KCZZ	1701 S 55th St, Mission, KS	913-287-1480
SPT		KCZZ	39-04--05N 94-42-09W	W of I-6351 S 55th St & Metropolitan Ave
SPT	1510	KCTE	6721 W 121st St, Overland Park, KS	913-344-1500
		KCTE	39-04-14N 94-26-58W	E of I-435 @ E 28th Terrace
SPT	1590	KPRT	11131 Colorado Ave	816-763-2040
		KPRT	39-04-05N 94-32-10W	S of I-70 @ E 31st St
BIZ	1660	KWOD	7000 Squibb Rd, Mission, KS	913-744-3600
		KWOD	39-02-17N 94-36-56	W of US-169 @ 50th St