

National Radio Club and Worldwide TV-FM DX Association

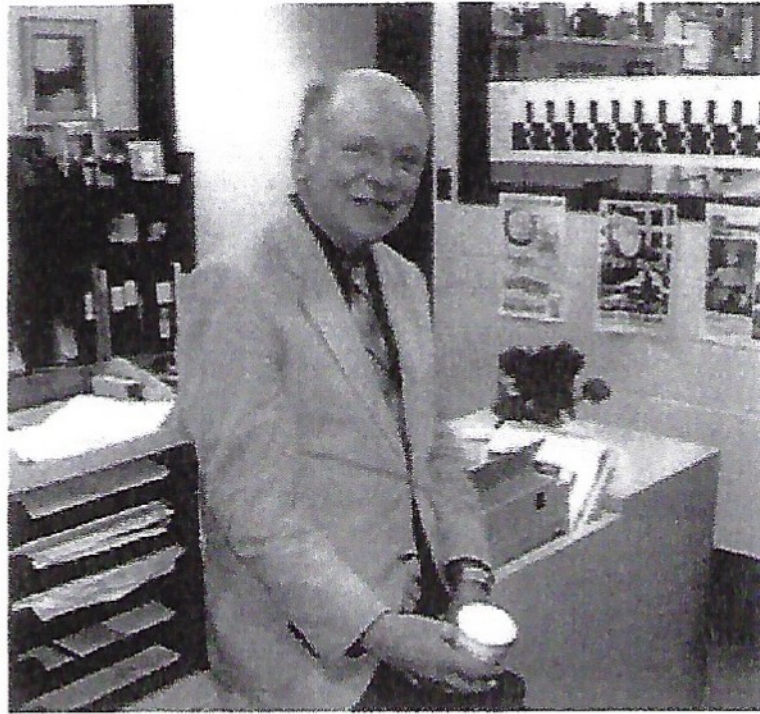


2011 Convention OMAHA, NEBRASKA



October 13 - 15, 2011

Comfort Inn & Suites
7007 South 72nd Street
Your hosts: Ernest J. Wesolowski
and Carl Mann



Bruce F. Elving

April 19, 1935 - July 24, 2011

This gathering of radio and television enthusiasts is dedicated to Bruce Elving, a publisher, FM radio connoisseur, DXer, and college professor from Duluth, Minnesota. Bruce was a friend to all DXers of broadcast stations, particularly those who dwelled on the higher frequencies.

His interest in FM radio began while the technology was still in its infancy and AM was more popular. He was the author of the FM Atlas, an extremely thorough directory of FM radio stations and translators throughout the United States, Canada, and Mexico. FM Atlas was published approximately every 18 months since 1971.

Bruce Elving was twice given the DXer of the Year award by the Association of North American Radio Clubs, first in 1973 and later in 1986. He was the guest speaker for the National Radio Club convention here in Omaha in 1992.

Mr. Elving had a desire to introduce others to the world of FM DXing, and the Worldwide TV-FM DX Association website includes an article by him, explaining the process. A commentary in the DX Listening Digest, June 19, 2005, listed Elving among those who had helped create today's DX hobby. The column referred to FM Atlas as "the FM equivalent of the NRC Log" and noted that Elving was a columnist for DXing Horizons magazine.

Mr. Elving held a bachelor's degree from the University of Minnesota-Duluth, a master's degree from Iowa State University, and a Ph.D. from Syracuse University. As an undergraduate student at the University of Minnesota-Duluth during the 1950s,

Online tributes to Mr. Elving in the radio community reflect his impact on the DXing hobby and on the FM industry, describing him as a "professor of FM radio" and a champion of the underdog. It is for this, and numerous other related reasons, that we dedicate this convention to an esteemed colleague whom we will long remember: Dr. Bruce F. Elving.

Welcome to Omaha !

Your convention hosts welcome you to the Big O. Also, greetings to you from our clubs' representatives :

On behalf of the Board of the Directors of the National Radio club, I want to welcome everyone to the 2011 Joint Convention of the National Radio Club and the Worldwide TV FM DX Association. We are very pleased to return to Omaha for this year's convention. We'd like to thank the "BIG-O-TEAM" headed up by Ernie Wesolowski and Carl Mann for organizing and excellent array of activities and securing some wonderful facilities for us. Thanks to all the members of both the NRC and WTFDA for coming out and we trust that you'll enjoy yourself and take advantage of all that Omaha has to offer and share in the camaraderie afforded us by being able to visit with other like-minded radio enthusiasts.

73 and Enjoy!

Wayne Heinen NOPOH

Chairman of the Board of Directors of the National Radio Club

Welcome to the combined NRC/WTFDA convention in Omaha. We hope you have a great time here!

You will probably find that many of your fellow attendees are both WTFDA and NRC members, since so many of us dabble in both TV/FM and medium wave Dxing. Fall, winter and spring are great times for AM DXing while the warmer months are perfect for FM and TV tropo and E-skip. If you do both you'll stay busy all year long!

This convention is being dedicated to Dr. Bruce Elving. Bruce was a long time WTFDA member and FM Dxer as well as publisher of the FM Atlas and FMedia newsletter. Bruce also promoted FM Stereo and SCA radio and modified numerous radios to pick up these mysterious transmissions. There are very few DXers or FM enthusiasts today who are not familiar with the name of Bruce Elving. His contribution to the hobby was immeasurable and he will sorely be missed.

And now, on with the fun!

Mike Bugaj, Enfield, CT

Publisher of the VHF-UHF Diges

SCHEDULE OF EVENTS -

Thursday, October 13

- 4pm- Social Hour- Hospitality Suite (Pop and beer provided).
- 6pm- Dinner, on your own. See list of nearby restaurants in your convention program, or ask your hosts Ernie or Carl for Omaha dining information, recommendations, or directions.

Friday, October 14

- 6-9am Breakfast- Complimentary for Comfort Inn guests.
- 9:30am- Tours departure, from parking lot.
Drivers: See Ernie for page of directions
- 10:00am- KFAB Transmitter site, 60th & Capehart Road
- 11:10am- KFAB and Clear Channel Studios, 5010 Underwood Avenue
- 12:15pm- (approximate) Treat Yourself Lunch Gathering- Goldbergs, (Good burgers) 5008 Dodge, near Clear Channel and New Radio Group studios.
- 1:30pm- New Radio Group (NRG) studios tour, 5011 Capitol Avenue
Followed by drive-by of Warren Buffet's home, 55th & Farnam.
- 5:00pm- Happy Hour, Comfort Inn Lounge, or Ballroom B & C (no alcoholic beverages in Ballroom)
- Evening- Dinner, on your own. See list of nearby restaurants in your convention program, or ask your hosts Ernie or Carl for Omaha dining information, recommendations, or directions.
- 7:30pm - Business Meeting -Ballroom B and C.
Auction and DX Quiz follows.
Door Prizes will be awarded during the evening.

Saturday, October 15

- 7-10am- Breakfast- Complimentary for Comfort Inn guests.
- 9:30am- Towers Tour-- Car Pool Leaves from hotel parking lot.
Drivers: See Ernie for page of directions
Offutt AFB Communications site north of Elkhorn,
tower sites for KCRO 660 and KXSP 590, and North Omaha TV/FM Tower Farm
- Lunch- On your own
- 2pm- Free Visit to Strategic Air & Space Museum, Ashland, NE (I-80 exit 426)
Car pool leaves from the hotel parking lot at 1:30pm.
Please note: This is a large museum and involves lots of walking.
- 5pm- Mark Durenberger demonstration of Perseus Receiver-
Comfort Inn back parking lot (Weather permitting).
- 5:30pm- Happy Hour, Comfort Inn Lounge.
- 6:30pm- Banquet - Ballroom B and C
Guest Speaker- Mark Durenberger, "DXing The Wars"
- Social Time afterwards- Ballroom.
Mark Durenberger offers up-close look at Perseus demonstration results.

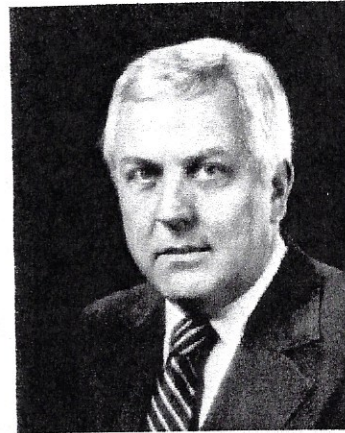
Sunday, October 16

- 7-10am Breakfast- Complimentary for Comfort Inn guests.
- 'Byes

Banquet
Saturday, October 15
6:30 pm
Comfort Inn Ballroom

Guest Speaker:

Mark Durenberger



Mark Durenberger's love of broadcasting dates back to 1955, when he began building high school and college stations, both closed circuit and pirate. His Army Signal Corps experience brought him close to the American Forces Network (AFN) Europe, and an appreciation for high-power MW transmitter plants that AFN used at the time.

His distinguished career includes engineering work at Saint Cloud, Minnesota, and Twin Cities stations (including WLOL and WCCO) and Hubbard Broadcasting (KSTP and KOB Albuquerque). He also worked at Sound 80 Studios as a recording engineer, and helped pioneer Direct Broadcast Satellite delivery. Most recently he has worked to develop satellite delivery of Internet services to developing countries, and is now assisting with the development of WiFi delivery to mobile platforms, such as cars.

Mark's DX Audio Service column for the NRC focuses on Clear-Channel AM broadcasting and on interviews with some of the folks who make our hobby so interesting

Mr. Durenberger is an important figure in the development of new technologies in the broadcast industry. Mark has been a technical author for leading trade journals, created the technical curriculum for industry seminars, and had a hand in developing several technical products in wide use in the broadcast industry. He has gained wide recognition for his promotion of his profession, and for supporting and enabling those seeking new challenges and opportunities in broadcasting.

We are honored and proud to present Mark Durenberger as tonight's guest speaker.
His topic will be, "DXing the Wars."

OMAHA Towers Map

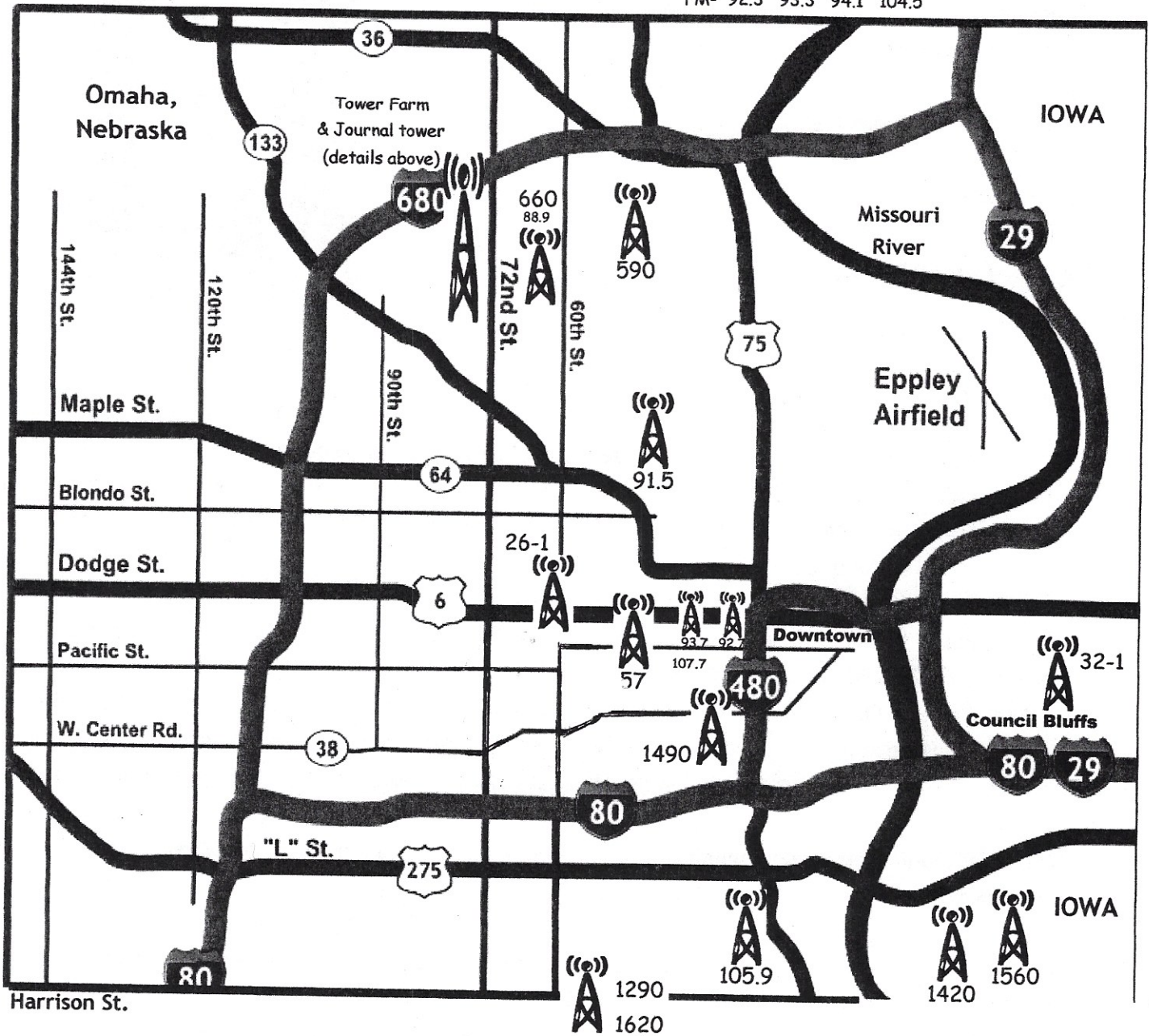
Tower Farm- Three Northernmost towers (owned by TV 3, 6, 7)

TV- Channels 3-1, 6-1, 7-1, 48, 61

FM- 88.1 89.7 90.7 96.1 98.5 100.7 103.7

Journal Tower- Fourth, slightly shorter tower on south end

FM- 92.3 93.3 94.1 104.5



OMAHA TELEVISION STATION INFO

Ch 3-1 KMTV CBS UHF 45

Ch 6-1 WOWT NBC UHF 22

Ch 7-1 KETV ABC UHF 20

Tower Farm- North 72d St and Crown Point Ave

Ch 12-1 KUON PBS Hi-V 12 Lincoln

NE-66 north of Memphis, NE

Ch 26-1 KYNE PBS UHF 17

UNO Campus, 64th & Dodge Streets

Ch 32-1 KBIN PBS UHF 33 Council Bluffs IPTV

Madison and Linn Avenues, E of Fairmount Park, C Bluffs

Ch 36-1 KHIN PBS UHF 35 Red Oak, IA IPTV

490th St & Juniper Rd, N of US-6 between Oakland & Lewis

Ch 15-1 KXVO CW UHF 38

Ch 42-1 KPTM FOX UHF 43

South 204th & Pflug Rd, Sarpy County

Not currently on:

Ch 48 KOHA Religious UHF 48 Analog Low Power TV

Tower Farm- North 72d St and Crown Point Ave

Ch 57 KAZO Azteca UHF 57 Analog Low Power TV

48th & Farnam (KPTM Studio location)

Ch 61 K61GA Religious UHF 61 Analog Low Power TV

Tower Farm- North 72d St and Crown Point Ave



2011 OMAHA DX Dials

by Rick Dau, Matt Sittel, and Carl Mann
(Mileages: Downtown to transmitter sites)

OMAHA AM DIAL

540 KWMT Fort Dodge, IA	126.0 mi S-3
550 KFRM Salina, KS	159.0 mi S-2
570 WNAX Yankton, SD	132.2 mi S-4
580 WIBW Topeka, KS	150.7 mi S-3
590 KXSP Omaha, NE	3.9 mi LOCAL
600 WMT Cedar Rapids, IA	230.0 mi S-2
610 KCSP Kansas City, MO	173.3 mi S-3
620 KMNS Sioux City, IA	90.0 mi S-2
640 WOI Ames, IA	130.1 mi S-3
660 KCRO Omaha, NE	3.6 mi LOCAL
680 KFEQ St. Joseph, MO	117.4 mi S-3
690 KGGF Coffeyville, KS	292.0 mi S-1/2
710 KCMO Kansas City, MO	173.0 mi S-2
730 KWOA Worthington, MN	164.0 mi S-1
740 KBOE Oskaloosa, IA	178.0 mi S-1/2
750 KMMJ Grand Island, NE	103.3 mi S-3
760 KCCV Overland Park, KS	171.0 mi S-1/2
780 WJAG Norfolk, NE	93.2 mi S-2
790 KXXX Colby, KS	296.0 mi S-1/2
800 KQAD Laverne, MN	165.0 mi S-1/2
810 WHB Kansas City, MO	154.8 mi S-3
840 KTIC West Point, NE	49.9 mi S-5
860 KKOW Pittsburg, KS	275.0 mi S-1/2
870 KAAK Bethany, MO	125.0 mi S-1
880 KRVN Lexington, NE	183.9 mi S-3
890 KGGN Gladstone, MO	161.0 mi S-1/2
900 KJSK Columbus, NE	72.7 mi S-3
920 KYFR Shenandoah, IA	59.5 mi S-5
940 KPSZ Des Moines, IA	137.6 mi S-3
960 KMA Shenandoah, IA	47.7 mi S-5
980 KMBZ Kansas City, MO	173.0 mi S-1/2
990 KAYL Storm Lake, IA	110.0 mi S-1
1020 KMMQ Plattsmouth, IA	19.7 mi LOCAL
1040 WHO Des Moines, IA	140.4 mi S-3
1050 KLOH Pipestone, MN	197.0 mi S-1/2
1060 KNLV Ord, NE	153.0 mi S-1/2
1080 KOAK Red Oak, IA	44.9 mi S-3
1110 KFAB Omaha, NE	9.7 mi LOCAL
1140 KSOO Sioux Falls, SD	164.0 mi S-1
1150 KSAL Salina, KS	182.3 mi S-2
1180 KOIL Bellevue, NE	11.8 mi LOCAL
1220 KJAN Atlantic, IA	55.0 mi S-1
1230 KTNC Falls City, NE	79.0 mi S-1
1240 KFOR Lincoln, NE	45.3 mi S-3
1250 KTFJ Dakota City, NE	81.0 mi S-1/2
1260 KTIA Boone, IA	129.0 mi S-1

1270 KNWC Sioux Falls, SD	145.0 mi S-2
1290 KKR Omaha, NE	5.0 mi LOCAL
1310 KGMT Fairbury, NE	94.0 mi S-1
1320 KELO Sioux Falls, SD	164.0 mi S-1
1340 KHUB Fremont, NE	25.8 mi S-4
1350 KRNT Des Moines, IA	127.7 mi S-1/2
1360 KSCJ Sioux City, IA	90.0 mi S-2
1370 KAWL York, NE	81.0 mi S-1
1380 KCIM Carroll, IA	86.0 mi S-1
1400 KLIN Lincoln, NE	44.7 mi S-3
1410 KLEM Le Mars, IA	110.0 mi S-1/2
1420 KOTK Omaha, NE	6.8 mi LOCAL
1430 KRGI Grand Island, NE	103.0 mi S-1/2
1440 KCHE Cherokee, IA	108.2 mi S-1/2
1450 KWBE Beatrice, NE	75.0 mi S-1
1460 KXNO Des Moines, IA	130.9 mi S-1/2
1470 KWSL Sioux City, IA	90.0 mi S-2
1480 KLMS Lincoln, NE	45.0 mi S-1
1490 KOMJ Omaha, NE	3.0 mi LOCAL
1510 KTTT Columbus, NE	73.0 mi S-1
1520 KSIB Creston, IA	87.0 mi S-1
1530 KDSN Denison, IA	64.0 mi S-1
1540 KXEL Waterloo, IA	207.0 mi S-1/2
1550 KESJ St. Joseph, MO	117.0 mi S-1/2
1560 KLNG Council Bluffs, IA	6.6 mi LOCAL
1570 KNDY Marysville, KS	100.0 mi S-1/2
1580 KNIM Maryville, MO	88.0 mi S-1
1590 KTCH Wayne, NE	83.0 mi S-1
1600 KNCY Nebraska City, NE	41.0 mi S-3
1620 KOZN Bellevue, NE	4.9 mi LOCAL
1660 KUDL Kansas City, KS	170.2 mi S-1/2
1700 KGGG Des Moines, IA	140.0 mi S-1

OMAHA FM DIAL

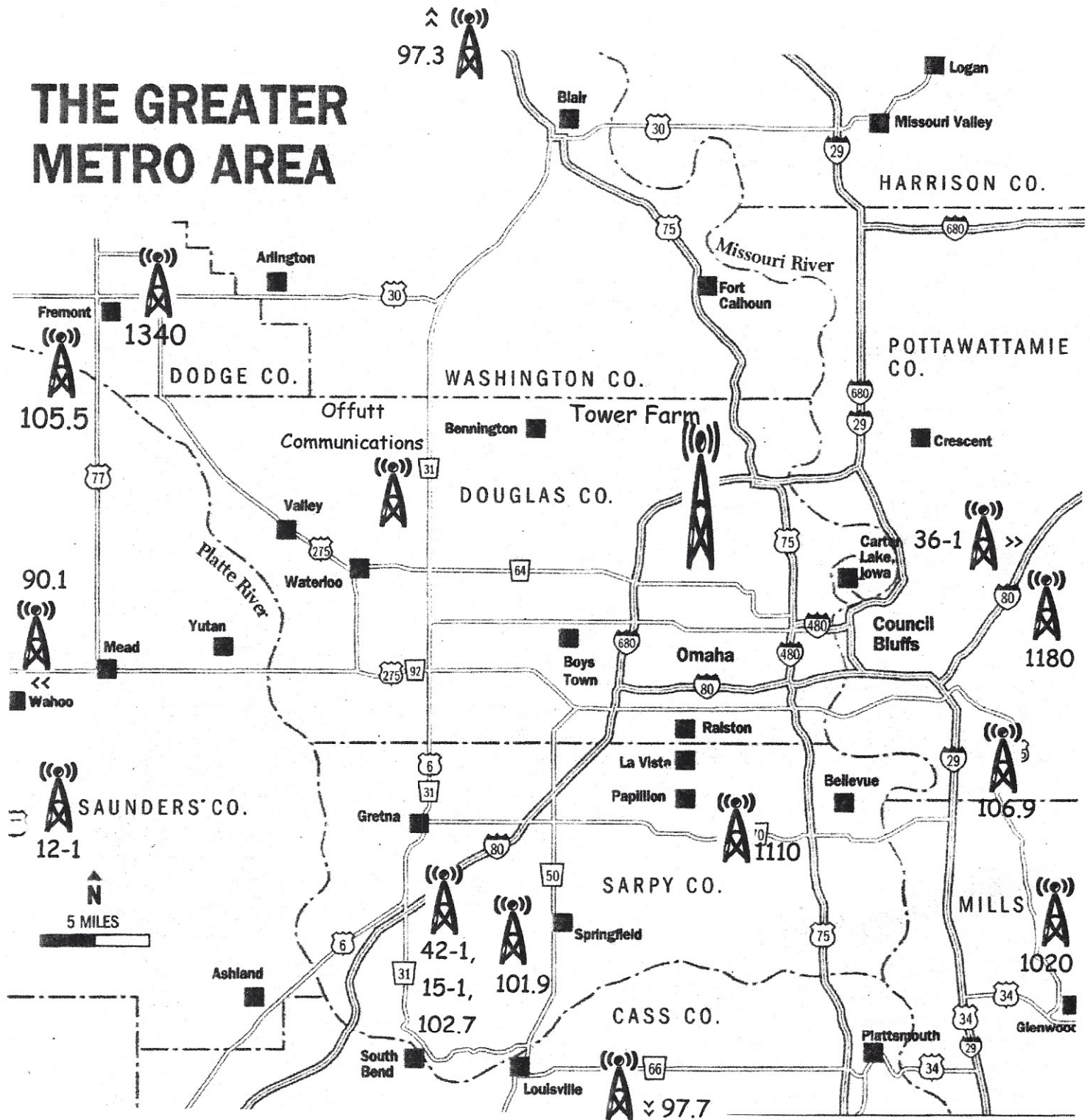
88.1 KMLV Ralston, NE	3.6 mi LOCAL
88.5 KLCV Lincoln, NE	38.1 mi S-4
88.9 KYFG Omaha, NE	3.6 mi LOCAL
89.3 KZUM Lincoln, NE	47.5 mi S-1
89.7 KIWR Council Bluffs, IA	3.6 mi LOCAL
90.1 KZLW Gretna, NE	34.7 mi (CP, Not On)
90.3 KWIT Sioux City, IA	85.3 mi S-1
90.5 KXCV Maryville, MO	83.5 mi S-1
90.7 KVNO Omaha, NE	3.3 mi LOCAL
91.1 KUCV Lincoln, NE	64.7 mi S-3
91.5 KIOS Omaha, NE	2.1 mi LOCAL
92.3 KEZO Omaha, NE	3.1 mi LOCAL
92.7 K224DJ (KLCV) La Vista, NE	3.0 mi S-5
92.9 KTGL Beatrice, NE	64.7 mi S-3
93.3 KTWI Bennington, NE	3.1 mi LOCAL
93.5 KKOT Columbus, NE	88.4 mi S-1
93.7 K229BI (KLCV) Omaha, N	2.6 mi LOCAL
94.1 KQCH Omaha, NE	3.1 mi LOCAL
94.5 KKEZ Fort Dodge, IA	126.0 mi S-1
94.7 KNEN Norfolk, NE	94.2 mi S-2
94.9 KGGO Des Moines, IA	134.8 mi S-2
95.1 KRKR Waverly, NE	40.5 mi S-3

95.3 KCSI Villisca, IA	45.2 mi S-3
95.7 KSWI Atlantic, IA	62.3 mi S-1
96.1 KQBW Omaha, NE	3.4 mi LOCAL
96.5 KSOM Audubon, IA	62.3 mi S-2
96.9 KZKX Seward, NE	43.7 mi S-4
97.1 KVVL Maryville, MO	81.1 mi S-2
97.3 KBLR Blair, NE	28.0 mi S-3
97.7 KBBX Nebraska City, NE	26.5 mi S-5
97.9 KSEZ Sioux City, IA	85.3 mi S-2
98.1 KFGE Milford, NE	71.0 mi S-3
98.5 KQKQ Council Bluffs, IA	3.3 mi LOCAL
99.1 KMA Clarinda, IA	66.0 mi S-2
99.5 KUTT Fairbury, NE	89.9 mi S-1
99.9 KGOR Omaha, NE	3.4 mi LOCAL
100.3 KZEN Central City, NE	88.4 mi S-3
100.7 KGBI Omaha, NE	3.6 mi LOCAL
101.1 KLIR Columbus, NE	72.4 mi S-2
101.3 KLZA Falls City, NE	81.3 mi S-2
101.9 KOOO Lincoln, NE	17.3 mi LOCAL
102.3 KQNU Onawa, IA	66.0 mi S-2
102.5 KSTZ Des Moines, IA	129.8 mi S-1
102.7 KVSS Papillion, NE	17.1 mi LOCAL
103.1 KNCY Auburn, NE	56.4 mi S-3
103.3 KTFC Sioux City, IA	85.9 mi S-1
103.7 KXKT Glenwood, IA	3.4 mi LOCAL
104.1 KIBZ Crete, NE	64.7 mi S-2
104.5 KSRZ Omaha, NE	3.1 mi LOCAL
104.9 KTMX York, NE	82.8 mi S-1
105.3 KNOD Harlan, IA	45.7 mi S-2
105.5 KFMT Fremont, IA	28.8 mi S-2
105.9 KKCD Omaha, NE	5.1 mi LOCAL
106.3 KFRX Lincoln, NE	48.3 mi S-3
106.7 KQKX Norfolk, NE	97.8 mi S-1
106.9 KOPW Plattsmouth, NE	14.9 mi S-5
107.3 KBBK Lincoln, NE	48.3 mi S-3
107.5 KILV Castana, NE	65.6 mi S-1
107.7 K299AK (KBLR) Omaha, NE	2.6 mi (CP)
KSYZ Grand Island, NE	141.2 mi S-2
107.9 KTIC West Point, NE	67.3 mi S-3

OMAHA TV

KMTV	CBS	3-1	UHF 45	Omaha
WOWT	NBC	6-1	UHF 22	Omaha
KETV	ABC	7-1	UHF 20	Omaha
KLKN	ABC	8-1	UHF 31	Lincoln, NE
KOLN	CBS	10-1	Hi-V 10	Lincoln, NE
KUON	PBS	12-1	Hi-V 12	Lincoln, NE
KXVO	CW	15-1	UHF 38	Omaha
KKAZ *	(CP)	23	Class A	12kw
KYNE	PBS	26-1	UHF 17	Lincoln, NE
KBIN	PBS	32-1	UHF 33	C Bluffs, IA
KHIN	PBS	36-1	UHF 35	Red Oak, IA
KPTM	FOX	42-1	UHF 43	Omaha
KOHA *	Religious	48	UHF 48	Omaha
KAZO *	Azteca	57-1	UHF 57	Omaha
K61GA *		25	UHF 61	Omaha

THE GREATER METRO AREA



ACTUAL LOCATIONS OF TOWERS INDICATED BY ARROWS AS OFF MAP :

90.1 is 3 miles west of Wahoo, just north of NE-92.

97.7 is 7 miles south of Louisville, located 1 mile N of Weeping Water, just east of NE-50.

97.3 is 7 miles north of Blair, W of US-75, just south of Herman NE

36-1 is 47 miles east of Omaha, north of US-6, between Oakland and Lewis IA.

OMAHA AREA FM-AM STATION INFO

KMLV-FM 88.1 MHz
59kw/1204 ft

Ralston, Nebraska
Crown Pt Ave (Tower farm, north tower)

KYFG-FM 88.9 MHz
1500 watts/440 ft
Omaha, Nebraska
North 61st & Hartman

KIWR-FM 89.7 MHz
100kw/1014 ft
Council Bluffs, Iowa
Crown Pt Ave (Tower farm, north tower)

KZLW-FM 90.1 MHz
100kw/121 ft
Gretna, NE
3 mi. west of WahooNE on NE 92

KVNO-FM 90.7 MHz
8.9kw/571 ft
University of Nebraska - Omaha
Crown Pt Ave (Tower farm, south tower)

KIOS-FM 91.5 MHz
55kw/381 ft
North 52d & Maple

KEZO-FM 92.3 MHz
95kw/1109 ft
North 72d & Browne St,
TV tower farm (Journal tower)

K224DJ-FM 92.7 MHz
140 watts/292 ft
La Vista, Nebraska
South 29th & Harney

KTWI-FM 93.3 MHz
9.6kw/351 ft
Bennington, Nebraska
North 72d & Browne St,
TV tower farm (Journal tower)

K229BI-FM 93.7 MHz
92 watts/344 ft
Omaha, Nebraska
35th & Farnam (WOWT tower)

KQCH-FM 94.1 MHz
95kw/1109 ft
North 72d & Browne St,
TV tower farm (Journal tower)

KQBW-FM 96.1 MHz
82kw/1050 ft
Crown Pt Ave (Tower farm, middle tower)

KBLR-FM 97.3 MHz
25kw/171 ft
Blair, Nebraska
County Rd 25, north of Co Rd P10,
N of Blair, S of Herman, NE

KBBX-FM 97.7 MHz
99kw/905 ft
Nebraska City, Nebraska
156th St and Hobscheidt Rd.
Weeping Water, NE

KQKQ-FM 98.5 MHz
100kw/1027 ft
Council Bluffs, Iowa
Crown Pt Ave (Tower farm, south tower)

KGOR-FM 99.9 MHz
110kw/1138 ft
Crown Pt Ave (Tower farm, middle tower)

KGBI-FM 100.7 MHz
100kw/942 ft
Crown Pt Ave (Tower farm, north tower)

KOOO-FM 101.9 MHz
96.4kw/1161 ft
Lincoln, Nebraska
So 180th & Buffalo Rd, Springfield NE

KVSS-FM 102.7 MHz
46.kw/1270 ft
Papillion, Nebraska
South 204th and Pflug Road
(KPTM tower)

KXKT-FM 103.7 MHz
100kw/1050 ft
Glenwood, Iowa
Crown Pt Ave (Tower farm, middle tower)

KSRZ-FM 104.5 MHz
98kw/1014 ft
North 72d & Browne St,
Tower farm (Journal tower)

KFMT-FM 105.5 MHz
Fremont, Nebraska
1200w/354 ft
Reed Lane and County Rd Y,
SW of Fremont across Platte River

KKCD-FM 105.9 MHz
50kw/410 ft
South 27th & W St

KOPW-FM 106.9 MHz
25kw/135 ft
E of I-29 Bellevue NE interchange, IA

K299AK-FM 107.7 MHz (KBLR)
75 watts/295 ft
35th & Farnam (WOWT tower)

KXSP-AM 590 kHz
5kw Non-directional
North 56th and Kansas Ave

KCRO-AM 660 kHz
1kw/54watts Non Directional
North 61st and Hartman

KMMQ-AM 1020 kHz
50kw/1.4kw Directional-Two Patterns,
4 towers Day, 6 towers Night.
3miles NE of Glenwood IA

KFAB-AM 1110 kHz
50kw Directional Nighttime Only, 3 towers
South 60th and Capehart Rd

KOIL-AM 1180 kHz 25/1kw Directional, 4 towers
Sunnydale Rd, north of McPherson Ave,
E side of I-80, Council Bluffs IA

KKAR-AM 1290 kHz
5kw Directional Nighttime Only, 3 towers
South 60th and Harrison

KHUB-AM 1340 kHz
Fremont, Nebraska
500/250 Non directional
Military Ave and Johnson Rd, Fremont NE

KOTK-AM 1420 kHz
1kw/330 watts/Directional, 2 towers
(Old South Omaha Bridge Road), IA-92,

KOMJ-AM 1490 kHz
1kw Non Directional
3600 South 38th

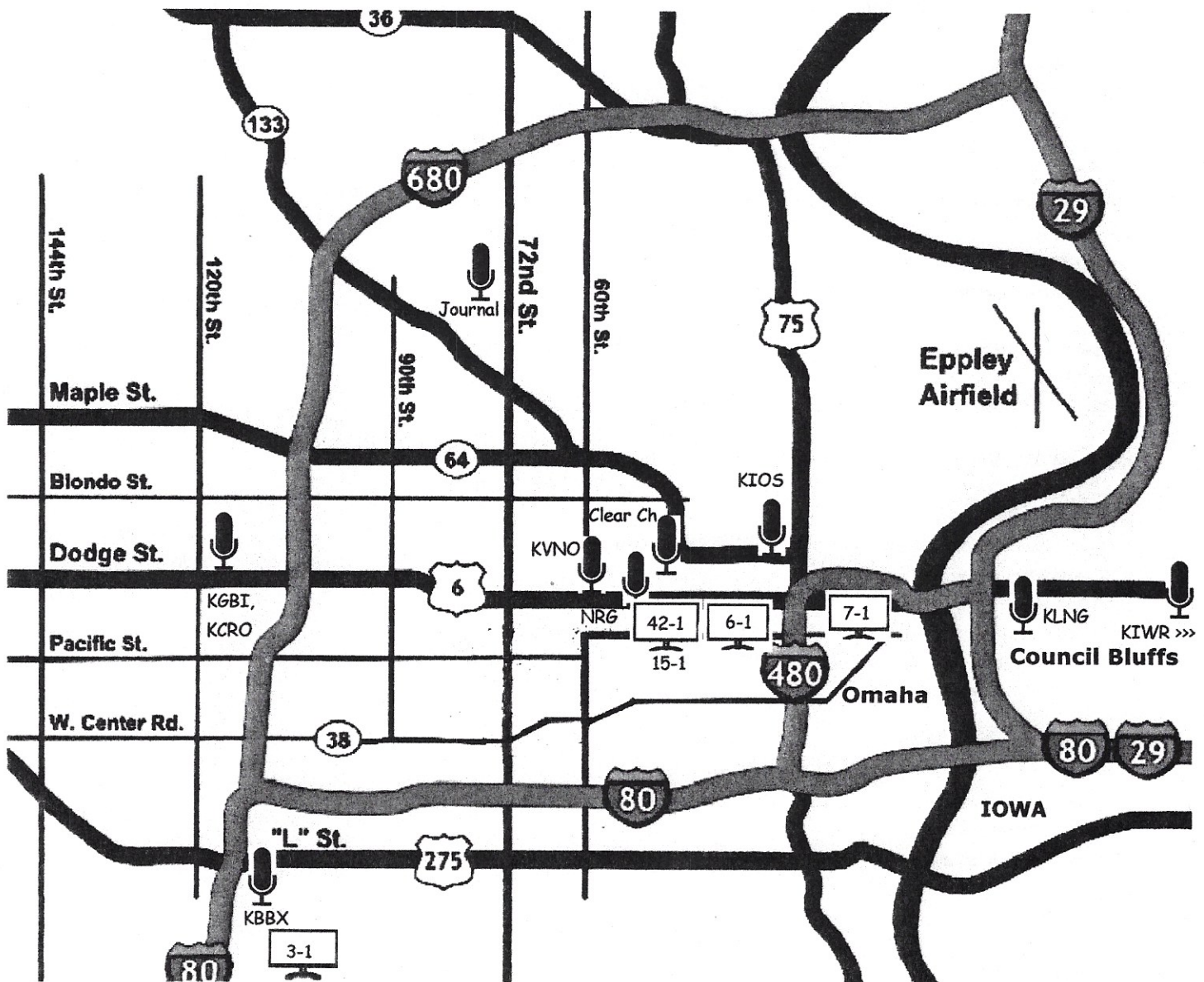
KLNG-AM 1560 kHz
10kw/Critical Hours 2.1kw, Non Directional
Council Bluffs, IA

KOZN-AM 1620 kHz
10kw Non Directional
Bellevue, Nebraska
60th & Harrison

OMAHA Radio-TV Studios Map

Journal Broadcasting 5030 N 72nd St
 New Radio Group (NRG) 5011 Capitol Ave
 Clear Channel 5010 Underwood Ave
 KMTV Ch 3-1 10714 Mockingbird Dr
 WOWT Ch 6-1 3501 Farnam St
 KETV Ch7-1 2665 Douglas St
 KXIV Ch 15, KPTM Ch 42 4625 Farnam St

Salem BCing. (KGBI KCRO) 11717 Burt St
 Iowa Western (KIWR) 2700 College Rd, CB
 Omaha Public Schools (KIOS) 3230 Burt St
 Univ of Nebr Omaha (KVNO) 60th & Dodge St
 Connoisseur Media (KBBX) 11717 J Galt Blvd
 Wilkins Comm (KLNG) 120 So 35th, C Bluffs



Clear Channel Stations KTWI KQBW KGOR KFAB KXKT
 NRG Stations KQKQ KOOO KOPW KOZN KKAR KOIL KMMQ
 Journal Stations KEZO KQCH KSRZ KKCD KXSP
 No local studio KVSS KOMJ KMLV KYFG KBLR

Omaha Area Radio & Television Historic Firsts and Facts by Carl Mann

First building ever constructed exclusively for broadcasting use: KOIL in 1926. Besides studios and transmitter room, the building had a kitchen and comfy facilities for traveling radio entertainers. In the hills of Council Bluffs, Iowa, the building today is a residence. The two concrete tower bases can still be found in the nearby brush.

First long-distance nighttime programming synchronization between two stations: KFAB and WBBM on 770 (later 780), 1933 to 1944. The frequencies of the two stations were locked together by an audio tone sent via telephone line from the WBBM transmitter to the KFAB transmitter. Also, since both stations aired CBS programs at night, WBBM engineers devised a way to delay their audio by 34 milliseconds so that Midwest listeners would not get an echo.

The oldest station in the U.S. under the original founding family's ownership: WJAG Norfolk 1922. Founder and operator Gene Huse died in 1961. Since that date, his son, Jerry Huse, publisher of the "Norfolk Daily News", has headed the company.

First regular early morning programming for farmers: KMA, starting in 1925. During broadcasting's early years of very limited daytime and evening schedules, KMA 960 programmed to the early-rising farming audience well before sunrise.

The only Midwest market to have two television stations during the post-war applications freeze. Omaha's KMTV 3 and WOW TV 6 came on the air within days of each other in 1949. All other Midwest markets, including Kansas City, fielded only one TV station until the freeze was lifted in 1952. In 1950, a problem arose when the network's coax cable arrived in Omaha. Only one of the two stations could air live network programming at a time; the other had to run kinescopes. The stations took turns for the live hookups each week.

Personality Johnny Carson: KFAB, WOW, WOW TV 1948-50. Carson's most famous bit while at WOW TV was interviewing a pigeon when the birds were in the news being cast as pests at the Douglas County Courthouse. The pigeons reported on alleged political corruption they had seen.

NBC newsmen Floyd Kalber and Tom Brokaw: Began their careers at KMTV. Both were news anchors for several years in the 1960s on Omaha's NBC (at the time) affiliate before being noticed by the network. Omaha native Kalber took over as the newscaster on the Today Show, 1976-81. Brokaw anchored the Today Show in the 1970s and later took the reins of the NBC Nightly News, 1982 to 2004.

Where Top 40 Radio was born: Todd Storz' KOWH 660 in the 1950s was a huge success focusing on pop music, personality, and promotion. Todd was part of the Omaha family that owned the successful Storz Brewery, but he was more interested in radio. Studying post-war programming, he noticed that the strongest interest in popular music was limited to a handful of titles during any given time. Thus was born the tight playlist of 40 records. Storz sold KOWH in 1958 after KOIL 1290 began copying his formula, but by then the Storz Empire and Top 40 formats were thriving across the country. Todd died in 1964.

Musical duo Everly Brothers: Hometown, Shenandoah, IA. The Everly family was on the KMA staff of in-studio entertainers in the early 1950s. The brother's first hit was in 1957.

Birthplace of the frozen TV dinner: Swanson kitchens, downtown Omaha 1954. Swanson found itself with an excess of turkey to sell and decided to try freezing it pre-cooked on a tray with vegetables and mashed potatoes. Timing was just right as favorite TV shows began competing with dinnertime, and cooking was simple: heat and serve. The Swanson name was discontinued in 2009 after having gone through several owners.

Biggest FCC punitive action ever taken against a broadcaster: KOIL, KEFM in 1976. All five Star Stations owned by Don Burden were silenced for numerous "improprieties," charges that Burden fought for years. The stations returned to the air after a few months with new operators. Don Burden died in 1982. His family still collects rent for the land on which KOIL's towers stand.

Personality Jimmy O'Neil: DJ at WOW, KOIL 1974-76, in his post KRLA and Shindig years. Jimmy was program director at KOIL when it was silenced by the FCC.

Special Thanks to:

Mark Durenberger- Guest Speaker

Carl "Skip" Dabelstein- Tucson AZ

Rick Dau- Omaha NE

Matt Sittell- Bellevue NE

John Bowker- Sun City Center FL

KFAB 1110 Radio and Clear Channel Broadcasting

New Radio Group (NRG) KOIL KKAR

Universal Radio 800-31-3939

DX Engineering 800-777-0703

Kenwood USA Corp. 310-609-2757

ICOM 800-858-6177

First National Bank of Omaha

State of Nebraska

Omaha Visitors Bureau

Yaesu Radio Equipment, Cypress CA

Close-by Restaurants:

Fast Food, Family

PERKINS

72nd & Grover (Family, 24 hrs)

BURGER KING

72nd & Grover (Fast Food)

Next I-80 interchange west---

DENNEY'S

84th & I-80 (Family)

McDONALDS

84th & I-80 (Fast food)

Churches

Saint Joan Of Arc Catholic Church:

74th & Grover, then 3 blocks north.

Sat evening Mass: 5:00 Sunday Mass: 7:30, 9:00

and 11:00am.

(This is the only nearby church. Please see a convention host to locate the nearest church of your denomination.)

Close-by Restaurants:

Finer Dining

MARGARITAS (Mexican)

72nd & Grover

ANTHONY'S STEAKHOUSE

72nd & F St (1 block south of I-80)

SPEZIA (Italian)

3125 S 72ND St (2 blocks north of convention site, same side of 72nd St)

Night Life

OZONE LOUNGE (live music 6-9pm. for the older crowd)

72nd & F St (1 block south of I-80, at Anthony's Restaurant)

Phone Numbers

Ernie (402) 330-7758

Carl (402) 319-0997 (cell)

Comfort Inn & Suites (402) 934-4900

72nd and Interstate 80/Grover Street

Emergency 911

2011 CONVENTION QUIZ

Name (1 point): _____

One point each correct answer. Total possible points: 63.

In the event of disputed answers, contestants must accept the decision of the Convention Hosts as final. Abbreviation: CoL = City of License.

1. ALPHABET SOUP (Current CoL and Dial Position. 1 point each; 4 possible points))

- KABC --
- KXYZ --
- WABC --
- WXYZ --

2. ANIMAL CALLS (CoL only. 1 point each, 6 possible points)

- KATL --
- KCOW --
- KATT --
- KWAK --
- KDOG --
- KCAT --

3. HOT AND COLD DX (CoL only. 1 point each; 5 possible points.)

- WARM --
- KOOL --
- WHOT --

(The next two are no longer on, but if you remember them it's worth a point each.)

- KOLD --
- KBRR --

4. STATIONS IN FICTIONALIZED WORKS (Calls only. 1 point each, 5 possible points.)

- Play Misty For Me (1971) Clint Eastwood as a Caramel, CA, DJ. --
- _____ In Cincinnati
- Mary Tyler Moore's newsroom was at _____ -TV.
- Prairie Home Companion (2006), with Garrison Keilor in Altman's last film—
- FM (1978 film. Hint: neither a W or K call.) --

THE OMAHA MARKET

5. What is the third of the four cities of license for KOIL? (1 point)

Council Bluffs, Omaha, _____, Plattsmouth

6. What Omaha 500 watt daytimer (at the time) on 660 is known as Todd Storz' birthplace of the Top 40 format? Original or current calls counts. (1 point) -

7. What Lincoln FM station's transmitter is so close to Omaha, that it's nearly twice as far from Lincoln as it is to Omaha? Hint: It's the only Lincoln tower that appears on the Omaha Metro Towers Map in your convention guide. (No fair peeking. Calls only, 1 point) --

THE X FACTOR (BAND)

- 8. What was the first US full-time Licensed X-band station?
(Calls and Freq. 1 point) -
- 9. What was the initial format of the station in question 8? (1 point) -
- 10. What Las Vegas station was widely heard, though briefly, on the x-band BEFORE the station in question 8? Hints: It was on the same frequency, and was demonstrating IBOC for a convention in the early 1990s. (Calls only. 1 point) --

11. GONE BUT NOT FORGOTTEN. CLASSIC STATIONS OF THE PAST--
What are their calls today: 1 point each; 6 possible points.)

- WRCA 660 New York City --
- WOW 590 Omaha --
- WRR 1310 Dallas --
- KLIF 1190 Dallas --
- KOL 1300 Seattle --
- KEWB 910 San Francisco --

12. WHERE ARE THEY NOW? OMAHA'S MIGRATING CALLS.

These calls were all in the Omaha market at one time. They have since been relinquished and picked up elsewhere. Today they are either AM or FM calls elsewhere.
(Current CoL only. 1 point each; 7 possible points.)

- KBON -AM was on 1490--
- KOOO-AM/FM was on 1420 and 104.5--
- KYNN-AM also was on 1490--
- KFMY-FM was on 92.1; Omaha's first FM Top 40--
- KQAL-FM 94.1 Omaha's first FM, later 94.3--
- KESY-AM/FM also was on 1420 and 104.5--
- KSWI-AM was on 1560 in Council Bluffs--.

"W" CALLS IN THE LAND OF "K"

- 13. What station has the remaining W call in Nebraska? (1 point) --
 - 14. There are six stations in Iowa that still have calls beginning with W, four of which are three-letter calls. What are the remaining three-letter calls?
(Calls only; CoL hints are given. 1 point each, 4 possible points.)
- Davenport--
 - Cedar Rapids--
 - Des Moines--
 - Ames--

15. Name the five 50kw AM stations in Nebraska and Iowa. (Calls only. 1 point.) --

16. What is Omaha's highest powered FM station, grandfathered in at 115kw. --
(Calls only. 1 point.)

17.. Name the only AM station in Buffalo whose calls begin with a K. (Calls only. 1 point.) --

FM and TV MULTIPLE CHOICE (1 point each, 10 possible points.)

18. Pioneer Public Television is a public broadcasting network with stations licensed to which state?

- a. Minnesota
- b. North Dakota
- c. Wyoming
- d. Montana

19. On September 1st, 2011, KSFX in Springfield, MO lost its Fox affiliation, and changed its calls to what?

- a. KRBK
- b. KSMO
- c. KWBM
- d. KOZL

20. What NBC affiliate brands themselves as "7 at Your Service"?

- a. WDAM, Laurel, MS
- b. KPLC, Lake Charles, LA
- c. WJHG, Panama City, FL
- d. WITN, Washington, NC

21. Which of these California TV stations is NOT a CBS affiliate?

- a. KCOY, Santa Maria
- b. KIEM, Eureka
- c. KHSL, Chico
- d. KION, Monterey

22. KAHM-102.1 is one of the last surviving 'beautiful music' radio stations. To which Arizona city is it licensed?

- a. Lake Havasu City
- b. Prescott
- c. Sedona
- d. Yuma

23. Which of these statements is NOT true about WHDG-FM?
- Broadcasts on 97.3, but was previously on 97.5
 - Calls stand for "Hodag", a mythical creature
 - Licensed to Eagle River, Wisconsin
 - Airs a country music format
24. If the calls of 96.9, Pittsburg, KS are reversed, the result is which of these station's calls?
- 88.3, Cedar Rapids, IA
 - 95.7, Morris, MN
 - 107.1, Pulaski, VA
 - 97.1, Meridian, MS
25. KRNP-100.7 is a fairly new station serving the North Platte, NE market. To which city is it licensed?
- Sutherland
 - Hershey
 - Paxton
 - Brady
26. Which of these out-of-state stations is, oddly enough, a Minnesota Public Radio affiliate?
- KRSD-88.1, Sioux Falls, SD
 - KFJM-90.7, Grand Forks, ND
 - WRFW-88.7, River Falls, WI
 - KJCY-95.5, St. Ansgar, IA
27. KMMW, "W 105", is licensed to what city?
- Maljamar, NM
 - Montesano, WA
 - Clifton, TX
 - Whitefish, MT
28. (5-POINT QUESTION)
What state is known as the Silver State? --

2011 CONVENTION QUIZ

Name: ANSWER PAGES

One point each correct answer. Total possible points: 62
In the event of disputed answers, contestants must accept the decision of the Convention Hosts as final. Abbreviation: CoL = City of License.

1. ALPHABET SOUP (CoL and Dial Position. 1 point each; 4 possible points)
 - KABC (Los Angeles, 790)
 - KXYZ (Houston, 1320)
 - WABC (New York, 770)
 - WXYZ (Detroit, channel 7)

2. ANIMAL CALLS (CoL only. 1 point each, 6 possible points)
 - KATL (Miles City, MT, 770)
 - KCOW Alliance, NE, 1400)
 - KATT Oklahoma City, 100.5)
 - KWAK (Stuttgart AR, 1240 -or- 105.5)
 - KDOG (Makato MN, 96.7)
 - KCAT (Pine Bluff, AR, 1340)

3. HOT AND COLD DX (CoL only. 1 point each; 5 possible points.)
 - WARM (Scranton PA, 580 -or- York, PA, 103.3)
 - KOOL (Phoenix 94.5)
 - WHOT (Youngstown, OH, 101.1)
 - KOLD (no longer on. Were in Tuscon 1230)
 - KBRR (Leadville, CO, not on)

4. STATIONS IN FICTIONALIZED WORKS (Calls only. 1 point each, 5 possible points.)
 - Play Misty For Me (1971) Clint Eastwood as a Caramel, CA, DJ. (KRML)
 - ____ In Cincinnati (WKRP)
 - Mary Tyler Moore's newsroom was at ____ -TV. (WJM)
 - Prairie Home Companion (2006), with Garrison Keilor in Altman's last film (WLT)
 - FM (1978 film. Hint: neither a W or K call.) (QSKY)

THE OMAHA MARKET

5. What is the third of the four cities of license for KOIL? (1 point)
Council Bluffs, Omaha, _____, Plattsmouth
(Bellevue)
6. What Omaha 500 watt daytimer (at the time) on 660 is known as Todd Storz' birthplace of the Top 40 format? Original or current call counts. (1 point)
(KOWH or KCRO)
7. What Lincoln FM station's transmitter is closest to Omaha, so close that it's nearly twice as far from Lincoln as it is to Omaha? Hint: It's the only Lincoln tower that appears on the Omaha Metro Towers Map in your convention booklet. (1 point)
(KOOO 101.9. 30.2 miles from Lincoln, 17.3 miles from Omaha, per Radio Locator)

THE X FACTOR (BAND)

8. What was the first US full-time Licensed X-band station? (Calls and Freq. 1 point)
(WJDM Elizabeth NJ 1660)

9. What was the initial format of the station in question 8? (1 point)
(Radio Ahhs, Children's format before Radio Disney).

10. What Las Vegas station was widely heard, though briefly, on the x-band BEFORE the station in question 8? Hint: It was demonstrating IBOC for a convention in the early 1990s. (Calls and Freq. 1 point) (KUSA 1660, demonstration station for the NAB Convention).

11. GONE BUT NOT FORGOTTEN. CLASSIC STATIONS OF THE PAST—
What are their calls today: 1 point each; 6 possible points.)

- WRCA 660 New York City (WFAN)
- WOW 590 Omaha (KXSP)
- WRR 1310 Dallas (KTCK)
- KLIF 1190 Dallas (KFXR)
- KOL 1300 Seattle (KKOL)
- KEWB 910 San Francisco (KNEW)

12. WHERE ARE THEY NOW? OMAHA'S MIGRATING CALLS.

These calls were all in the Omaha market at one time.

Today they are either AM or FM calls elsewhere. (CoL only. 1 point each; 7 possible points.)

- KBON -AM (Mamou, Louisiana - KBON-FM 101.1 MHz)
- KOOO-AM/FM (Lincoln, NE - KOOO 101.9)
- KYNN-AM (Cameron, Arizona - KYNN 1450 kHz)
- KFMX-FM (Lubbock, Texas - KFMX 94.5 MHz)
- KQAL-FM (Winona, Minnesota - KQAL 89.5 MHz)
- KESY-FM (Baker City, Oregon - KESY 91.9 MHz)
- KSWI-AM (Atlantic, IA - KSWI 1560)

"W" CALLS IN THE LAND OF "K"

13. What station has the remaining W call in Nebraska? (1 point)
(WJAG Norfolk, NE,)

14. There are six stations in Iowa that still have calls beginning with W, four of which are three-letter calls. What are the remaining three-letter calls? (1 point each, 4 possible points.)

- WOI Ames, IA,
- WHO Des Moines, IA,
- WOC Davenport, IA,
- WMT Cedar Rapids, IA

23. Which of these statements is NOT true about WHDG-FM?
- Broadcasts on 97.3, but was previously on 97.5
 - Calls stand for "Hodag", a mythical creature
 - Licensed to Eagle River, Wisconsin (CoL: Rhinelander, Wisconsin)
 - Airs a country music format
24. If the calls of 96.9, Pittsburg, KS are reversed, the result is which of these station's calls?
- 88.3, Cedar Rapids, IA
 - 95.7, Morris, MN
 - 107.1, Pulaski, VA
 - 97.1, Meridian, MS (WOKK)
25. KRNP-100.7 is a fairly new station serving the North Platte, NE market. To which city is it licensed?
- Sutherland (KRNP)
 - Hershey
 - Paxton
 - Brady
26. Which of these out-of-state stations is, oddly enough, a Minnesota Public Radio affiliate?
- KRSD-88.1, Sioux Falls, SD (Minn Public Radio affiliate)
 - KFJM-90.7, Grand Forks, ND
 - WRFW-88.7, River Falls, WI
 - KJCY-95.5, St. Ansgar, IA
27. KWMW, "W 105", is licensed to what city?
- Maljamar, NM (KWMW)
 - Montesano, WA
 - Clifton, TX
 - Whitefish, MT
28. (5-POINT QUESTION)
What state is known as the Silver State?
(Nevada)