



**NATIONAL RADIO CLUB
CONVENTION**

**Atlanta, GA
Sept. 1-4, 1978**

HOW MANY STATIONS DO YOU GET ?

Office of the Governor

Atlanta, Georgia 30334

George Busbee
GOVERNOR

Dear National Radio Club Members:

As Governor of Georgia, it is a pleasure for me to welcome you to our State as you meet in Atlanta for your annual convention.

We are honored that you have chosen our capital city as your convention site, and hope that you will thoroughly enjoy the Labor Day weekend you spend in Georgia.

While you are here, I invite you to take advantage of the many attractions Atlanta has to offer. I am sure you will find there is much to make your visit an enjoyable one, and that you will be warmly received by our citizens.

Again, welcome to Georgia. I hope you enjoy your stay and that you will visit us often.

Sincerely,


George Busbee

CITY OF ATLANTA

MAYNARD JACKSON
MAYOR

September 1, 1978

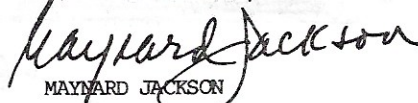
Greetings:

It is my pleasure to extend an enthusiastic welcome to the members and friends of the National Radio Club. We are pleased that you have chosen Atlanta as the site of your annual convention.

Although I am sure your schedule will be a busy one, please take the time to see and enjoy our beautiful, thriving city. We are proud of our reputation as a national convention and education center, our long-established reputation for southern hospitality and our commitment to the pursuit of justice for all people. I am sure that, if you have the time to see our city and meet our people, you will not be disappointed.

Best wishes for a pleasant and successful convention.

Yours for Atlanta,


MAYNARD JACKSON

MJ/ps



WELCOME TO ATLANTA !!!

THE Georgia - Atlanta DXers (GAADs) welcome you to the 1978 National Radio Club Convention and hope you will have an enjoyable stay while in Atlanta.

We have some interesting activities, including some that are different and unusual, lined up for the weekend. If time permits, we hope that you will be able to take in some of the sites in the "Dogwood City".

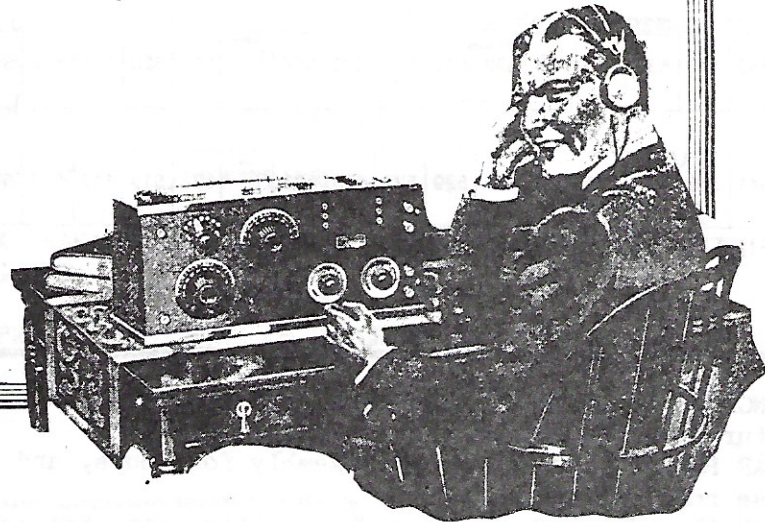
Convention Headquarters are located in the Hospitality Room, on the fifth floor of the hotel. Each day we will post the activities, so be sure and check daily in the event of any changes from the published schedule.

During our gathering, there will be other guests in the hotel, so we ask that you have a good time, and respect the rights of those other guests.

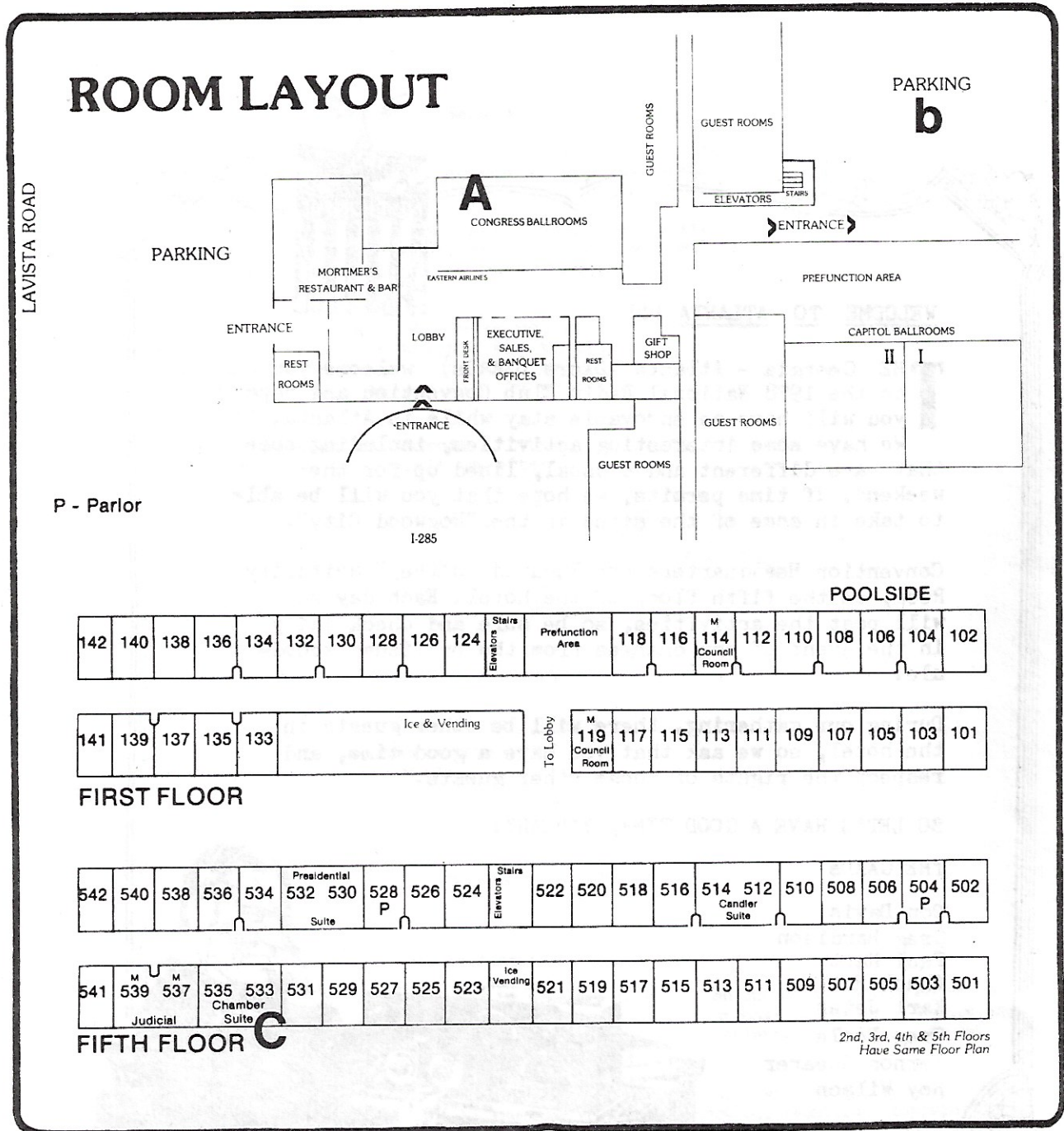
SO LET'S HAVE A GOOD TIME, Y'HEAR?!

THE GAADs

- Don Davis
- Greg Hardison
- Paul Hart
- Chuck Hutton
- Karl Jeter
- Greg Poole
- Vernon Shearer
- Roy Wilson



4 NORTHLAKE HILTON INN



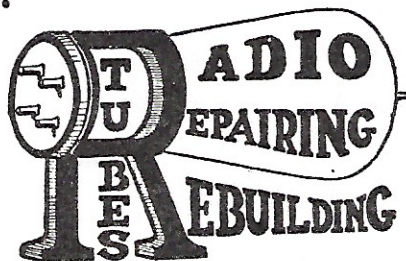
- A** CONGRESS BALLROOM A --Location of the Banquet, Business Meeting, and Auction Saturday Night
- b** REAR PARKING LOT--Place of Assembly for Tours, and the DX Safari
- b** Use rear entrance.
- C** CHAMBER SUITE-- Convention Hospitality Room. Refreshments available here throughout the convention.

CUTTING OUT INTERFERENCE

Mick: "Why do your condensers tune so sharp?"

Wick: "Simple, old horse. Using Gillette blades for plates."

Contributed by Jack Bront.



We learn from the June 7, 1924, issue of *The Radio Digest* that "Steamboats on Lake Geneva, Switzerland, are being used with receivers!" Evidently they run better when listening to broadcast programs.



Contributed by Arthur R. Hudson.

Schedule of Events

5

FRIDAY

- 1:00pm TOUR OF THE F.C.C. MONITORING STATION, POWDER SPRINGS, GA. We will leave at 12:30pm in automobiles from the rear parking lot.
- 3:00pm CONVENTION REGISTRATION OFFICIALLY OPENS IN HOSPITALITY ROOM (Chamber Suite, Third Floor)
- Evening & Night Informal gatherings, gab-sessions, etc.

SATURDAY

- 8:30am Coffee and doughnuts in the Hospitality Room
- 9:30am TOUR BEGINS. THE BUS WILL LOAD IN THE REAR PARKING LOT FOR THE TRIP WHICH WILL INCLUDE STOPS AT WSB'S "WHITE COLUMNS" STUDIOS, AND THE TRANSMITTER
- 2:00pm BUS RETURNS TO HOTEL.
- 3:00pm PROPOGATION SEMINAR WITH RON SCHATZ
- 4:00pm BEVERAGE ANTENNA SEMINAR WITH CHUCK HUTTON
- 7:00pm THE N.R.C. BANQUET WITH OUR GUEST SPEAKER, MR. AUBREY MORRIS, WSB DIRECTOR OF PROMOTION AND PUBLICITY. THE MEAL WILL BE SERVED BUFFET-STYLE.
- THE BUSINESS MEETING WILL FOLLOW THE BANQUET.
- 9:30pm THE ANNUAL N.R.C. AUCTION. Items will be on display prior to the auction

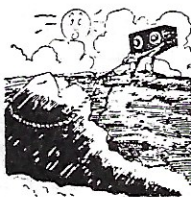
SUNDAY

- Morning No formal activities planned so those wishing to attend church may do so. Check with the hotel desk for information on local churches.
- 1:00pm SLIDE PRESENTATION WITH GLENN HAUSER
- 2:00pm C.P.C. SEMINAR WITH JERRY STARR
- 4:00pm THE GREAT DX SAFARI (See seperate handout) ASSEMBLE IN REAR PARKING AREA.
- 10:30pm BEVERAGE DXPEdition TO HOME OF CHUCK HUTTON (Until ????)

MONDAY

Morning CONVENTION CLOSES, CHECK-OUT.

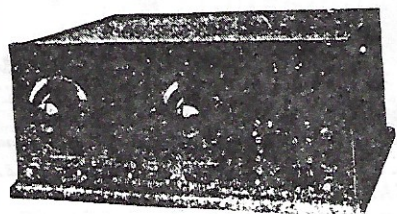
SURE A POWERFUL SET



The *Boston Post* for January 2, 1925, ran a classified advertisement for the sale of a marvelous radio set, for it states of its power—"Has pulled in coast." Some haul from Boston we should say.

Contributed by Horace Sargent.

The GREBE Broadcast Receiver Type CR-12



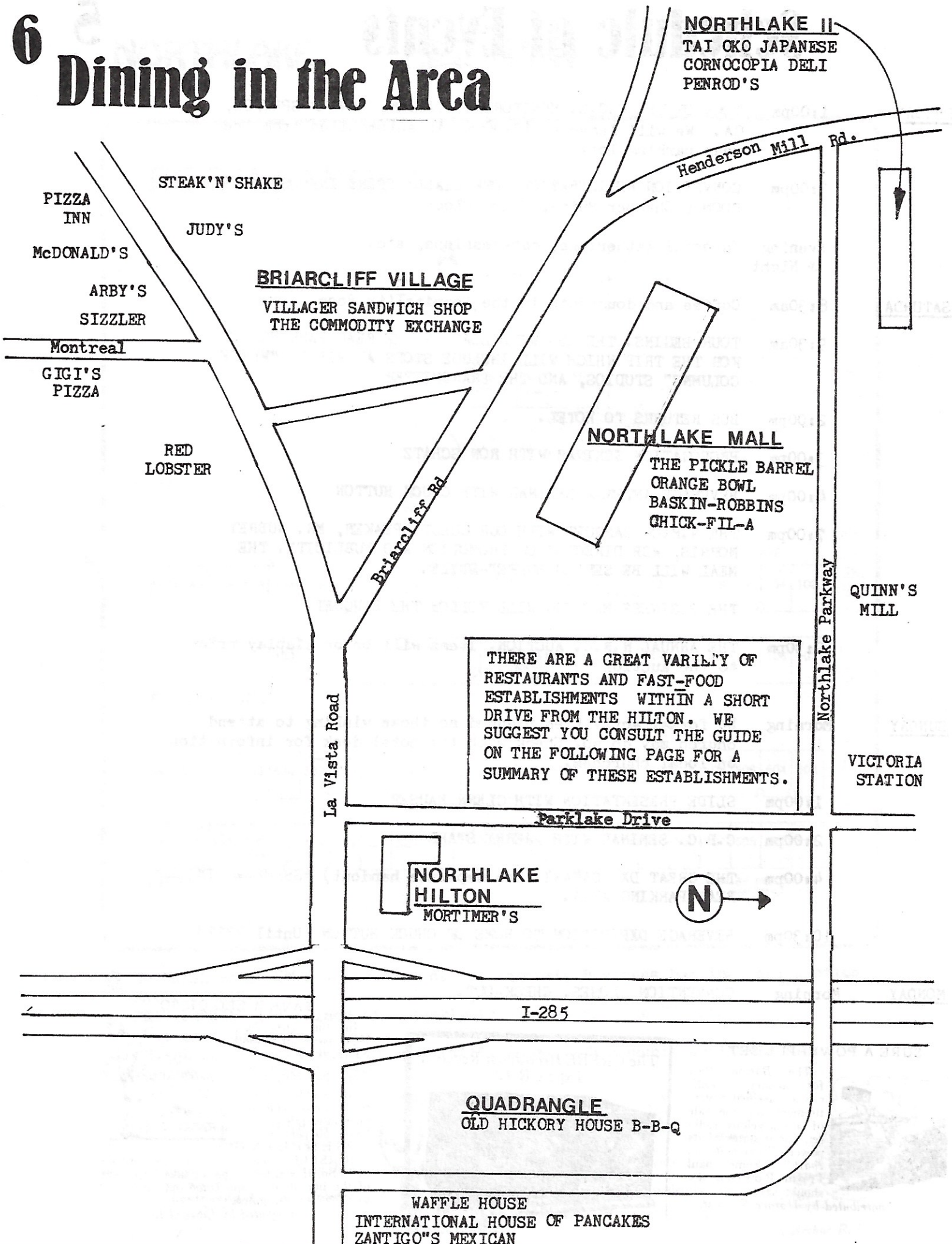
SAVE A LEG OR SO

In the December, 1924, issue of *RADIO NEWS*, the *Radio Specialty Co.* advertises a push pull transformer and with carefree recklessness complete their sales talk as per: "Save 50 per cent. by ASSEMBLING YOURSELF. Simple instructions furnished." So, if you are in pieces take advantage of the liberal offer and come out an ear or so ahead of the game.



Contributed by Edward Lutz, Jr.

6 Dining in the Area



Restaurant Guide

7

FAST FOODS

- ARBY'S ROAST BEEF- 3897 La Vista Rd.
JUDY'S HAMBURGER'S- La Vista Rd (across from McDonald's)
McDONALD'S- 3893 La Vista Rd.
STEAK 'n' SHAKE- 3880 La Vista Rd.

RESTAURANTS

- INTERNATIONAL HOUSE OF PANGAKES- 4276 LaVista Rd. Open Fri & Sat 24 Hrs, Sun. 6am-Midnite.
OLD HICKORY HOUSE- Northlake Quadrangle. Open Mon-Thur 7am-10pm, Fri&Sat 7am-11pm, Sun. 7-9pm
Barbeque is s specialty.
RED LOBSTER- 3937 La Vista. Open 11:30-10pm Mon-Thur, Fri&Sat 11:30am-11pm, Sun. 11:30am-10pm
Seafood at family prices. Beer.
SIZZLER- 3925 La Vista Rd. Steak and Seafood.
TAI-OKO- Northlake II. Japanese food.
VICTORIA STATION- Northlake Parkway. Open 11:30am-2:30 Lunch, 5:30-10:30pm Dinner Mon-Thurs.
Dinner Fri & Sat to 11:30pm, Sun. 4:30-9:30pm. Steaks, Beer & Wine.
WAFFLE HOUSE- 4274 La Vista Rd. Open 24 Hours.
ZANTIGO'S- 4286 La Vista Rd. Open 10:30-11 Mon-Thur, 10:30-Midnite Fri&Sat, Sun. 10:30-11
Mexican food.

SPECIALTY

- BASKIN-ROBBINS- Northlake Mall. In the mall, ice cream.
CORNOCOPIA DELI- Northlake II. Open 10-10 Mon-Sat. Closed Sundays, beer & wine.
ORANGE BOWL- Northlake Mall, In the mall, light snacks, pizza, ice cream.
THE PICKLE BARREL- Northlake Mall, in the Mall, Open 9:30-9 Mon-Sat. Sun 12-5:30, Sand
wiches, soups, beer.

PIZZA

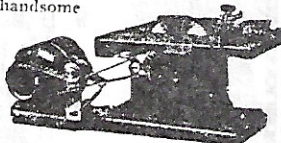
- GIGI'S- 3939 LaVista Rd, Open 11-2 Lunch, 5-12 Dinner, Mon-Fri& Sat. Sun 5-10 Beer & Wine
PIZZA INN- 3865 LaVista Rd, 11-Midnight Mon-Thurs, 11-2am Fri&Sat, 9-Midnight Sun. Beer.

NIGHTSPOTS, TAVERNS, ETC

- THE COMMODITY EXCHANGE- 2098 Henderson Mill Rd (Briarcliff Village). Open 11:30am-4am daily
Beer, wine, liquor, food.
MORTIMER'S- In the Northlake Hilton (Check with hotel desk for information)
PENROD'S- Northlake II. Open 10am-3am daily, closed Sun. Disco opens 9:30pm Mon-Thur
and 10pm Fri & Sat.
QUINN'S MILL- Northlake Parkway Open Lunch 11:30-2:30, Dinner 5:30-11:30 Fri& Sat, 5:30
-10:30 Mon-Thur. Steaks, seafood, live entertainment.

BUILD STYLE INTO YOUR RADIO!

Make your Radio a beautiful piece of furniture by building a handsome cabinet with a **BOICE-CRANE JUNIOR BENCH SAW**. Make money building for others. Easy to do the whole job on a Junior Bench Saw. Does riping, mitring, grooving, rabbeting, sanding, grinding, and many other operations with ease and accuracy. Special blades cut Bakelite. Saws 2 1/2" stock. Table 10" x 13". Driven by 1/2 or 1/4 h.p. motor attached to light socket. Write for illustrated booklet on bench saws, hand saws, jigs, saws, lathes and jointers. All sold on money-back guarantee.



W. B. & J. E. BOICE Dept. 804-B, TOLEDO, OHIO

9 Circuits-1 Tuning Dial!

A Separate Circuit for each 40 Meter Wavelength Band. A single tuning dial, yet greater selectivity. Let our nearest dealer show you the great Kellogg.

KELLOGG WAVE MASTER

Or write for complete descriptive folder No. 1-D today.
KELLOGG SWITCHBOARD & SUPPLY COMPANY
1041 W. Adams Street Chicago, Ill.

FREE RADIO GUIDE

NEWEST 1926 EDITION

Shows the latest circuits, the newest developments in radio at startlingly low prices. Get the parts you want here and save money. The best in parts, kits, sets and supplies. Orders filled same day received. Write for free copy NOW; also please send names of one or more radio fans.
BARAWIK CO., 102-145 So Canal St., Chicago, U. S. A.

Station
WRNY
NEW YORK

258.5 Meters - 1160 kilocycles
is owned and operated by the
publishers of this magazine
Our Editors will talk to you
several times every week-
See your Newspaper
for details
TUNE IN ON
WRNY



Atlanta Local Radio Then...

FERBEND
TRADE MARK
Wave Trap
PATENT APPLIED FOR

★ **The Original Wave Filter**

Stops Interference!

Eliminates interfering stations. Improves the selectivity of the set. Eliminates local broadcasting. Selects between conflicting stations. Simplifies tuning. Often increases signal strength. Reduces howling and squealing.

The WAVE TRAP is mounted on a Formica panel in a beautiful mahogany finished cabinet 6 x 5 x 6, and is a high grade instrument throughout, enhancing the appearance of the most expensive sets.

850 Ferbend Electric Co.
CHARGES PREPAID
19 E. SOUTH WATER ST.
CHICAGO
Circular on Request

Get a **WRIGHT'S RADIO LOG**

EVERY FAN NEEDS ONE!

Wright's Radio Log is the finest, the most comprehensive and the handiest record book ever produced for radio fans. Nothing else like it in existence. Ruled to fit any set from 1 to 8 tubes—special pages for local stations and programs, separate pages for every big station. Absolutely indispensable to every fan; helps you get full enjoyment from your set. Beautifully bound—convenient pocket size—64 pages—indexed. Standard Style, bound in Castilian cover, 50c. DeLuxe Style, bound in Molloy embossed cover, \$1.00. Sent postpaid on receipt of price. Guaranteed to satisfy or money instantly refunded. Order yours today. Dealers write.

MAIL THIS COUPON

H. G. WRIGHT, 1502 Fisher Bldg., Chicago, Ill.
Enclosed find for WRIGHT'S RADIO Log as indicated.
 Standard Edition—50c DeLuxe Edition, \$1.00
My money back if not satisfactory to me.

Name

Address

FROM RADIO NEWS, April, 1925 Issue

Frequency given in meters, with approximate kHz equivalent in parentheses. Power given in watts. Name of owner also given.

- W B B F * 270 (1110) 500w Georgia School of Technology
- W S B + 428.3(700) 750w Atlanta Journal
- W D B E 278 (1070) 100w Gilham-Schoen Electric Co.

* This station (WBBF) not on 1926 list; WDBE moved to this frequency.

+WSB increased power to 1000 watts by 1926.

& NOW...

- W P L O-590 U2 5000d/5000n Country mx
- W R N G-680 *D1 25000d Nx/Talk
- W S B -750 U1 50000d/50000n Pop mx, Var.
- W Q X I-790 U2 5000d/1000n Top 40
- W X A P-860 D1 1000d Country mx
- W G S T-920 U1 5000d/1000n All- Nx
- W K L S-970 D3 5000d Album Rock
- W G U N-1010 D1 50000d Country/Gspl
- W C O B-1080 D3 10000d Nostalgia (licensed Marietta, Ga.)
- W G K A-1190 D1 1000d Classical
- W F O M-1230 U1 1000d/250n Top 40 (licensed Marietta, Ga.)
- W T J H-1260 D1 5000d Gospel (licensed East Point, Ga.)
- W X L L-1310 D1 500d Gspl/Disco (licensed Decatur, Ga.)
- W I G O-1340 U1 1000d/250n R&B, Soul
- W L A W-1360 D1 1000d Country Mx (licensed Lawrenceville, Ga.)
- W A O K-1380 U2 5000d/5000n R&B, Soul
- W A V O-1420 D3 1000d Religious (Licensed Avondale Estates, Ga.)
- W D Y X-1460 D1 5000d Country Mx (licensed Buford, Ga.)
- W Y Z E-1480 D1 5000d Jazz/Gospel
- W D G L-1520 D1 1000d Popular Mx (licensed Douglasville, Ga.)
- W Y N X-1550 D1 10000d Gospel (licensed Smyrna, Ga.)
- W S S A-1570 D1 5000d Country Mx (licensed Morrow, Ga.)
- W A C X-1600 D1 1000d Country/Gspl

* WRNG-680 has CP for U2 25000d/10000n that has been granted but not implemented as yet.



1922 U.S. Radio

THE LIST TO THE LEFT INCLUDES ALL RADIO STATIONS OPERATING IN APRIL, 1922 IN THE U.S. NO FREQUENCIES ARE NOTED, BECAUSE AT THIS TIME, ALL OF THESE STATIONS OPERATED ON 360 METERS (ABOUT 830 kHz)! IT IS NOTED BY THE CONTRIBUTOR THAT MANY STATIONS VARIED HIGH OR LOW SLIGHTLY TO "AVOID THE CROWD".

ATLANTIC SEABOARD STATES

- W J Z Newark, NJ
- W O R Newark, NJ
- W N O Jersey City, NJ
- W J X New York, NY
- W D T New York, NY
- W F I Philadelphia, PA
- W O O Philadelphia, PA
- W V P Fort Wood, NY
- W G Y Schenectady, NY
- W C J New Haven, CT
- W Q B Hartford, CT
- W B Z Medford Hillside, MA
- W G I Springfield, MA
- W D N Washington, DC
- W D W Washington, DC
- W J H Washington, DC
- 4 C D Atlanta, GA
- W B P Charlotte, NC

MIDDLE WEST STATES

- K D K A Pittsburgh, PA
- W P B Pittsburgh, PA
- W L K Indianapolis, IN
- W D Z Toledo, OH
- W M H Cincinnati, OH
- W B L Detroit, MI
- K O P Detroit, MI
- K Y W Chicago, IL
- W H A Madison, WI
- W O U Omaha, NE
- W L B Minneapolis, MN
- 9 Z A B Kansas City, MO
- 9 Y Y Lincoln, NE

MOUNTAIN STATES

- 9 Z A F Denver, CO

PACIFIC STATES

- K L B Los Altos, CA
- K L B Pasadena, CA
- K Q L Los Angeles, CA
- K Y J Los Angeles, CA
- K Z C Los Angeles, CA
- K G C Hollywood, CA
- K Z M Oakland, CA
- K Z Y Oakland, CA
- K V Q Sacramento, CA
- K D N San Francisco, CA
- K G B San Francisco, CA
- K Y Y San Francisco, CA
- K Q W San Jose, CA
- K J Q Stockton, CA
- K W G Stockton, CA
- K J J Sunnyvale, CA
- K F C Seattle, WA

GULF STATES

- W R R Dallas, TX
- 5 Z U Austin, TX
- W P A Fort Worth, TX

Perfect Mastery
of Radio



MU-RAD
RECEIVERS
MA-15

"I am ready to obey thee as thy slave, and the slave of those who have that lamp in their hands"

—The Arabian Nights

MORE wonderful even than Aladdin's Lamp is your perfect mastery of radio's unlimited resources with the *Mu-Rad MA-15 Receiver*. Distance beyond imagination, sensitivity as quick as thought, itself, all with control that obeys your wishes easily and simply. Loud speaker reception, using only a two foot loop. The most highly developed circuit—two stages of audio and three stages of radio frequency amplification with detector.

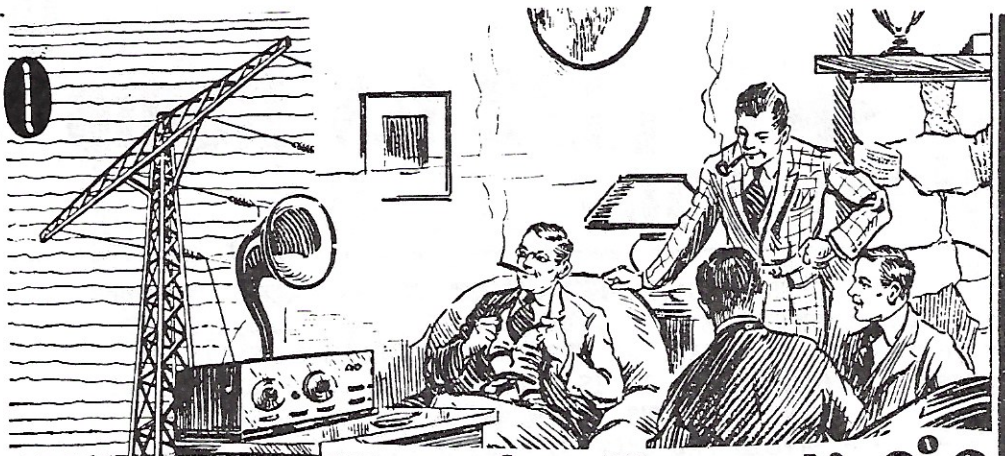
RECEPTION CONSERVATIVELY GUARANTEED \approx 1000 MILES

WRITE FOR ILLUSTRATED LITERATURE



Establishes a New Standard

MU-RAD LABORATORIES, INC.
801 FIFTH AVE. ASBURY PARK, NEW JERSEY




How's Your N.Q.?

PART A:
 THIS TEST IS DESIGNED TO SEE HOW MANY OF THE TRADEMARKS BELOW YOU CAN MATCH WITH THE TYPE OF PRODUCT. A LIST OF THE PRODUCT-TYPES APPEARS BELOW. IT LOOKS EASY, BUT REMEMBER, ALTHOUGH MANY OF THE TRADEMARKS LOOK FAMILIAR, IN 1924, THE COMPANIES WERE QUITE DIFFERENT FROM THE SAME COMPANIES TODAY. GOOD LUCK!

ANSWERS APPEAR ON PAGE

1 **BAKELITE**
REG. U.S. PAT. OFF.

2 **Pathé**


3 *For Better Radio*
Hammarlund
 PRECISION

5 **FORMICA**

4 **ZENITH**
Licensed under
 Armstrong
 U. S. Patent
 No. 1,417,149

*In an easy chair
 at home MAGNAVOX
 gives you the melody
 of concert and opera*

7 **Belden**
 Manufacturing Company
 2314A So. Western Ave.
 CHICAGO, U. S. A.

6 **MAGNAVOX**
 Radio



9 **Tungar**

8 "SIGNOLA"

10 *E. J. Cunningham Inc*

11 **WESTINGHOUSE**

- | | | |
|--------------------------|------------------------------|--------------------------|
| A. Condensers | E. Receivers | I. Loudspeakers |
| B. Portable Loop Antenna | F. Amplifiers & loudspeakers | J. Batteries |
| C. Wire and cable | G. Battery chargers | K. Insulation for radios |
| D. Tubes | H. "laminated phenol resin" | |

Nostalgia Quota

MUSICAL CALL LETTERS....PART B:

The following ten call letters are familiar to most DXers today, but over fifty years ago, they were assigned to stations in different cities from their modern counterparts. A few of them simply moved to their current locations while retaining the original call. See how many of the former locations you can guess correctly:

Call	Present	Mid-twenties
A. K F A B	Omaha, NE	<h1>?</h1>
B. K F E Q	St. Joseph, MO	
C. K Y W	Philadelphia, PA	
D. W A B B	Mobile, AL	
E. W C B G	Chambersburg, PA	
F. W J J D	Chicago, IL	
G. W L A P	Lexington, KY	
H. W M A K	Nashville, TN	
I. W R B C	Jackson, MS	
J. W S A C	Fort Knox, KY	

ANSWERS BELOW. QUIZ CONCOCTED FROM ISSUES OF RADIO NEWS, 1924 & 1926.

Publications

A LIMITED NUMBER OF THOSE FAMOUS N.R.C. PUBLICATIONS WILL

BE ON SALE THROUGHOUT THE CONVENTION. CHECK WITH KARL JETER OR KEN CHATTERTON FOR THE FOLLOWING:

Pat. Books • Manuals • SRS / SSS Maps • Reprints • DX-Guides (NO LOGS, UNFORTUNATELY)



THE PSALM OF RADIO

Radio is my hobby, I shall want no other.
It maketh me stay home at night.
It leadeth me into much trouble.
It draweth on my purse.
I go into paths of debt for its namesake.
Yea, though I understand it perfectly, it will not ocellate.

It's concerts and speeches they comfort me.
Yet, it will not work in the presence of mine enemies.
I anoint the coils with shellac;
But the tube spilleth over.
Surely the radio bug won't follow me all the days of my life,
For if it does, I will dwell in the house of poverty forever.

HARRY R. LUBCKE

NOSTALGIA QUOTA ANSWERS:

J. Clemson College, SC.

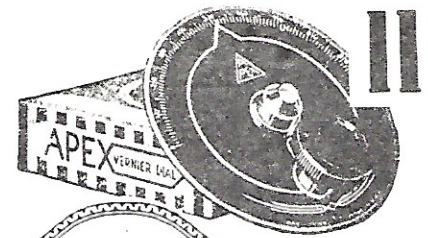
G. Louisville, KY; H. Lockport, NY; I. Valparaiso, IN;

IL; D. Harrisonburg, PA; E. Pascagoula, MS; F. Mooseheart, IL;

PART B-CALL LETTERS: A. Lincoln, NE; B. Oak, NE; C. Chicago,

9-G, 10-D, 11-J

PART A-TRADEMARKS: 1-H, 2-I, 3-A, 4-E, 5-K, 6-F, 7-C, 8-B,



MORE DISTANT STATIONS

WITH THE APEX VERNIER DIAL

Greater range, bigger volume, finer selectivity, less interference. Lasts forever. The one big advance yet made in tuning. Ratio 12 to 1.

Quickly applied to any shaft.

For sale by all good Radio Dealers.

If unable to obtain from dealer, enclose

\$2.00 for Royal Brass Finish.

\$2.50 for Satin Silver Finish.

\$3.50 for De Luxe Gold Plated Finish.

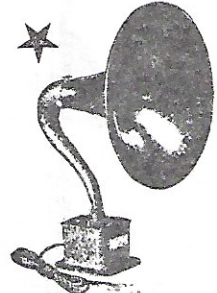
7 Tube Microdyne Super-Heterodyne for \$97.50
Receive the parts complete to assemble your set. Coast to coast on an 18 in. loop-rodnyne Super-Heterodyne on a 7 x 18 in. panel in 3 hours. Parts complete. Price of cabinet, to fit, on application. If your radio dealer cannot supply, send check or money order and name of dealer.

The Apex Super Five is a tuned radio frequency receiver of the highest type. Built into a highly finished walnut cabinet—complete with Jones Multiple Battery Cable—all settings highly gold plated. List price \$95.00 complete.

Apex Electric Mfg. Co.
1410 West 59th Street Dept. 406 Chicago

THE SONOCHORDE

Radio Loud Speaker
Is the one you will eventually buy



Type B \$27.50

Type C In walnut or mahogany cabinet. Complete with phone tip jacks \$50.00

Type D (Illustrated) \$35.00

A comparative demonstration leaves no other in the thoughts of those who want the best. If your dealer cannot demonstrate the Sonochorde to you, send us his name and we will make it possible for him to do so.

Boudette Manufacturing Company
Revere, Mass.

We have a good proposition for territorial distributors

Acknowledgements

THE G.A.A.D.'S CONVENTION COMMITTEE WOULD LIKE TO THANK ALL OF THE FOLLOWING FOR THEIR SUPPORT, HELP, AND CONTRIBUTIONS WHICH MADE THIS CONVENTION POSSIBLE:

W S B RADIO AND: MR. ELMO ELLIS, VICE PRESIDENT &
GENERAL MANAGER
MR. AUBREY MORRIS, DIRECTOR OF PUBLICITY
& PROMOTION
MR. C. H. SUTTON, CHIEF ENGINEER

RADIO WEST AND MR. GRANT MANNING
WORCESTER ELECTRONICS LAB AND MR. JOE WORCESTER
MR. VERNON SHEARER (FOR THE RADIO NEWS MAGAZINES)
NATIONAL TRANSPORTATION SERVICE
MR. GEORGE HAYMANS, GAINESVILLE, GA.
CARTER AND ASSOCIATES
THE NORTHLAKE HILTON INN AND MS. FRANKIE BENTLEY
MAYOR'S OFFICE, CITY OF ATLANTA
THE OFFICE OF THE GOVERNOR OF GEORGIA
ATLANTA CONVENTION & TOURISM BUREAU
ATLANTA CHAMBER OF COMMERCE
RADIO STATIONS:

WCOB/WBIE-FM AND MR. JIM WILDER
WDGL
WPLO
WRNG
WXAP
WKLS AM & FM
WBBQ-AM AUGUSTA, GA
WGST
WQXI

RCA VICTOR RECORDS
ATLANTA MAGAZINE
MR. RON SCATZ
MR. CHUCK HUTTON
FRITO-LAY
MR. WAYNE MURPHY & WFTDA
COCA-COLA
BESTWAY COPY CENTER, ATLANTA
THE FEDERAL COMMUNICATIONS COMMISSION

PLUS ANYONE ELSE INADVERTENTLY LEFT OFF THIS LIST!