



DX NEWS

*the magazine of the
National Radio Club*

— SINCE 1933 —

VOLUME 44, NO. 11

17 JANUARY 1977

Now it can finally be told — after the UPS strike, the holiday delays, and two snowstorms, all orders for Domestic Logs placed before Christmas have been processed. If you placed an order before that time, and have not received delivery yet, please notify the Publications Center. All orders for other publications are now up to date also. We have received over 70 orders for the 1977 World Radio-TV Handbook, and the order will have been forwarded to Gilfer by the time you read this. The Handbooks are expected to be ready for shipment in early February. Likewise we have some 25 orders processed for the Travellers' Radio Directory, also at discount prices, and these orders will have been forwarded to the publisher by the time you read this for delivery within a few weeks.

We can also announce that effective about January 20, we will have Updaters available for both the new (1975) Night Pattern Book and the new (1976) Domestic Log through the Reprints Division of the Publications Center. All of these have, of course, appeared already in DXN. By about February 1, we will be able to accept orders for the revised second printing of the NRC Antenna Reference Manual, at no change in price, also through the Publications Center.

ON THE INSIDE.....

- * More Convention Photos - Karl Jeter & Ray Arruda
- * DXChange - RjE
- * Verie Signers - ERC

NEW MEMBERS

- * Jim Renfrew, 789 Carson Ave., Rochester, NY 14609 (re-joins)
- * W. E. Gittings, 583 Dryman Cres., Mississauga, Ontario, CANADA L5G 2N9

RENEWALS

P. Crabill, T. Benko, W. Brown, D. Fischer, R. Wing, C. Healy, A. Retzlaff, R. Eddie, J. Roberts, F. Blystone, D. Schmidt, D. McCourt, R. Briggs, D. Budesheim, R. Horie, D. Phillips, H. Wilkinson, D. White.

FLASH TIPS & SUCHLIKE

The late TEST from WBUC-1560 on 12/21 netted 19 reports, from as far as Connecticut, Alabama and Mississippi, per Andy Robins. Another late TEST was noted for 1-10, about which we had no prior notification: WBUC-1460, Buckhannon, WV from 0200-0300. New TESTS for future dates are listed on page 2 as usual.

NOTES & FROM NJPC

Jim Hagan reports that his Longwave converters described recently in DXN are about completed. By this date, I expect they are, hi. He had half of the first batch sold, and with the exception of the core, will be shipped in assembled condition.

The Handicapped Aid Program (HAP) will now be operated by Wayne A. Davis, 27 Cleveland Ave., Trenton, NJ. Former Director Ted Poling has had to relinquish his duties due to entering a nursing home. We wish both Ted and Wayne the best of luck. HAP provides financial and other assistance for handicapped DX'ers who cannot afford club memberships or materials. To our knowledge, we have only one Hapie as an NRC'er....

THE WORLD'S OLDEST AND LARGEST ALL MEDIUM-WAVE DX CLUB

C. P. C. TEST SCHEDULE

MONDAY	JAN. 17	- 0230-0300	* WSTL-1560	* Slidell, LA	1000	B	IND
		- 0315-0345	* KUMA-1290	* Pendleton, OR	5000	U	IND
SAT. 1/15 or 1/22		0100-	* KWBC-1550	* Navasota, TX	250	T	IND
MONDAY	31	- 0000-0030	* WREJ-1530	* St. John's, ME	1000	T	IND
		- 0300-0400	* KAJZ-1570	* Great's Pass, CA	5000	T	IND
MONDAY	FEB. 21	- 0200-0300	* WYUJ-1400	* Great Bay, VI	1000/250	U	IND
MONDAY	28	- 0200-0400	* KAAA-1230	* Kingman, AZ	1000/250	U	IND
MONDAY	MAR. 14	- 0630-0655	* WJL - 640	* Jones, IA	5000	L	IND
MONDAY	21	- 0200-0300	* WJLH-1490	* Bedford, VI	1000/250	U	IND

- KWBC** - FF, Null, V/s: EM Moskio, RIA, Box 320, 40779. Arr: John Doolle.
- KAAA** - Running the full 1 kw on PoP, March Lx, 700 Hz code F's. V/s: Lyle C. Henry, (8700), 2534 Margaret Ave., 36401. Arr: R. J. Edmunds.
- KUMA** - No pgm. details. Will use NDA Day pattern. V/s: Bob Bretz, CE; Box 278, 97801. Arr: Nick Hall-Patch.
- WSTL** - Annual PoP. No pgm. details. V/s: George A. Maynard, P, 620 First NBC Bldg., New Orleans, LA 70112. Arr: Jay Florian
- KWBC** - This is a PoP, but I can't find any additional details at presstime, and it's too late to look and get this out on time, sri.

Believe that this is from the English humour magazine, "Punch", but not sure who sent it....

Albania is to begin high-power transmissions in 1978 on the medium-wave frequency now used by Radio 3. Listeners might like to make a note of some of the new programmes we expect to be hot favourites...

9.0 Test Match Special

Blow-by-blow coverage of the equestrian quots from the Shqipetar Stadium high up in the pebble-strewn badlands north-east of Scutari on the final day's play between the Ghegs and the Tosks. On the commentary box is *Richie Shouteriqi* who will be lecturing, between rubbers, on harnessing lignite.

12.0 News Extra, Albania Today, Sports Round-Up, Weather and Closing Prices

12.01 This Week's Composer:

GREGOR LLAMBI SHTYLLA
Music by the distinguished Dalmatian goat-herd and bauxite refiner is featured all this week. Today's concert includes highlights from his *Dirge For Zog* and the second movement of *Fragment*, a new concerto for whistle and hand-cranked mechanical shawn which is dedicated to Prof. Zihni Fragment, head of the People's Secretariat For Sino-Albanian Trade And Export of Elbasan Seedless Olives (P.S.F.S.A.T.A.E.O.E.S.O.).

2.45 Man of Action

Coastguard Rexhep Bochniakou makes his personal selection of records from his collection which includes *Herb Ylli and his Tirana Brass*, Hadjihusen's *Balkan Lament*, Shirley Abicair's *Greatest Hits*, Buddy Holly *Sings Smetana* and a special K-Tel nostalgic album of *Swinging Chart-Toppers from the Ottoman Invasion*.

4.0 Perspectives

Edward Lucie-Kirk assesses the pyrites yield of the Black Drin Gorge and compares it with chromite extracted from the shores of Lake Okhrida. Mechanisation of winnowing provides inspiration for the Bulgar poet *Mahmut Toherma* and A. J. P. Shtetor traces the early years of William of Wied who entered Albania as "mpret" in March 1914 but left in September.

6.10 Homeward Bound

Sheepdog calls and the Great Gong of Yanina on disc in an interlude of uninterrupted music to hum to over the passes.

11.30 Your Concert Choice

Another chance to hear the performance broadcast earlier today of

works by Gregor Llambi Shtylla together with our through-till-two feature in which each night we are able to repeat the bulk of his *Maize Symphony*.

2.0 - 9.0 Albanian National Anthem (repeat)



international dx digest

editor: Alan Merriman 03
P.O. Box 6
Fairfax, VA. 22030

Phone 703-354-2135 Before 2200 ELT *All Times Are GMT *Deadlines Are Friday*

New stations, changes, skeds, etc.

COSTA RICA R. Centroamericana, ex R. Atenea on 975 khz is sked 1000-0600. Power is currently 14 kw, to be increased to 25 kw later. R. Omega is now on 600 khz, ex-625 w/50 kw, sked 1145-0500. (SCDX)

PORTUGAL A new stn is on 926 khz carrying pgm 3. Location is Lamego. (SCDX)

INTERNATIONAL WATERS On Dec. 10 R. Mi Amigo and R. Caroline changed freqs. Since then R. Mi Amigo broadcasts in DD on 1562 khz, formerly used by R. Veronica. R. Mi Amigo signs off at 1800. R. Caroline on the new freq of 1187 khz is on 24 hours a day. (SCDX)

Now, whats been heard. All from Mark Connelly unless indicated

- 525 -**COSTA RICA** Cartago, R. Rumbo has been in fairly well several times in late Dec. Best 12/23 and reported then. S/off regularly at 0505. Begins last anmt and maybe others w/the word "Rumbo". Seemed to say they would return at 7 AM local time but perhaps this referred to the "Musica Popular" pgm. Freq was announced as 525 and now seems to be back on that spot. Better sig may mean a tune up, no power was mentioned. (Freeman)
- 529 -**ALGERIA** Ain Beida goos w/AA male group vocals //548, 0515 12/21. Poor/fair w/f talking, then AA mx, 2150 12/23. Noted w/discussion pgm, 2 men in AA w/low-key talk, 2235 12/28. (Connelly)
- 545 -**DOMINICA** R. Jumbo good w/mx, interrupted by FF talk, 2314 12/28.
- 548 -**ALGERIA** Oran good w/AA vocals //529, 0515 12/21. Good at 2151 on 12/23. Good w/AA discussion //529, 2237 12/28.
- 550 -**CUBA** Pinar del Rio CMAN o/others w/female vocal //600, hotted by 548, 0520 on 12/30.
- 584 -**SPAIN** Madrid audible w/m in SS thru WEEI slop, 2318, 12/28. (Lobel)
- 590 -**CUBA** CMW Havana 1/3 0630 w/usual chimes playing R. Rebelde theme. Hrd in null of KFXX/KUGN. No audio hrd til 0634:45 when SS singing began followed by w/ancr. 602.2-UNID LA SS here w/typical mx and SS talk; carrier had rough note when spotted w/BFO; not Cuba as pgm didn't fit (too commercial in style) and Cuba noted on 600 a little bit later. Unid hrd 2324-2330 12/28. Not noted following nite.
- 611 -**MOROCCO** Seba-Aioun good w/AA chanting, 2153 12/23. Noted w/female AA chant at low modulation level, 2248, 12/29.
- 650 -**ALASKA** KYAK ID was hrd 11/8 at 0703 for first time in several years, but sig was only rarely in for brief periods. (Freeman)
- UNID 1/3 1225. Suspect TIBAS or YVLH. Thought I hrd mention of Maracay; but KFI slop just too much. Highly doubt this was a Mexican. (Lobel)
- 660 -**HAITI/VENEZUELA** R. Lumiere seems to s/off at 0358 followed by YVNA s/off using clear call, but slogan sounded like "Ondas de los Merras". I suppose just a matter of distortion. These hrd 12/13. There seemed to be a 2nd SS w/R. Uno after 0400 on 12/28, but no ID. (Freeman) (DeLorenzo)
- 710 -**VENEZUELA** YVKY R. Capital good in WOR null w/US rock, m in SS, 0434, 12/31.
- 719 -**PORTUGAL** Norte fair w/time pips, FF talk, mx, 2200 12/23. Also fair w/talk thru WGN slop, 2337 12/28.
- 725 -**COSTA RICA** San Jose TILX in well w/SS talk, 0404, 12/23.
- 777 -**SPAIN** Barcelona fair/good w/m in SS, 0517, 12/21.
- 746 -**UPPER VOLTA** Ouagadougou riding w/SAH; woman in FF here at 2339, 12/28. Fair, alone on channel w/m in FF, 2240, 12/29.
- 750 -**UNID** 1/3 1202. Perhaps YNX or YVKS. WSB too much to get anything useful. Sounded like a news broadcast in SS. (Lobel)
- 755 -**PORTUGAL** Lisboa excellent w/cl piano mx, 2204, 12/23.
- 760 -**COLOMBIA** Barranquilla HJAJ good o/u WJR w/RCN IDs and mx about Barranquilla, 0055, 12/31. (Lobel)
- 764 -**CUBA** CMCI Havana 1/3 1200 w/many TCs and m/ancr giving mx. Mixing w/GR.
- 764 -**SENEGAL** Dakar good w/mx sounding like a plastic toy ukelele, then f in FF ID, 2207, 12/23. Fair thru WJR/WABC slop w/man in AA 2341 12/28. In like a pile driver w/FF talk (m/f), by far the strongest at 2255 on 12/29. Like a local w/non-AA native mx, then f in FF, 2225, 12/30.

DOMESTIC X IGEST

EDITOR: Eric Rittenhouse
2315 Dwight Way #101
Berkeley, CA 94704

And they said it couldn't happen again... Yes folks, ECR has dug his way from beneath a huge pile of tips which mysteriously started showing up in his mailbox a couple of weeks ago, and returns to compile yet another wacky edition of DDXD....

1st Tue	1340	WIOS	MI	TAWAS CITY, CW ID 0047, verbal 0048. (W'ski)
	1430	WVAM	PA	ALTOONA, TT 0100-0110, IDs every 2 min. (W'ski)
1st Sat	1460	KRNY	NE	KEARNEY, TT 0145-0200, full ID 0200. (W'ski)
	900	WATC	WI	GAYLORD, Tent w/TT, no IDs 0059-0104. (W'ski)
3rd Tue	1470	WBTX	VA	BROADWAY, TT, IDs. (CD-IL)
3rd Sat	1280	KCNI	NE	BROKEN BOW, 0135-0150 w/TT, ID at end. (CD-IL)
4th Mon	1470	WJDI	MD	SALISBURY, per list. (GMS-NY)
	1590	WCBG	PA	CHAMBERSBERG, 1k TT. (JP-ON)

Also, WETT-1590 has rc 3rd Tue 1200-1230 w/1k tone; this per Bob Padula, former CE, via PRM.

Tests

740	WGSM	NY	HUNTINGTON, hrd by Boyd, Starr, Andrews, Arruda.
860	KWHO	UT	SALT LAKE CITY, hrd by Bull, Starr, not hrd by Arruda.
910	KBGN	ID	CALDWELL, hrd by Forth 1 hr late w/TT.
940	WECC	TN	WARTBURG, hrd by HWB, CD, RA, MD, JS, KA.
990	WNNO	WI	WISCONSIN DELLS, not hrd by Starr, Arruda.
1000	WIQT	NY	HORSEHEADS, hrd by KDF, WHA, MPO, RA, PRM.
1090	KNWS	IA	WATERLOO, not hrd by RA, TT hrd by JS, but no ID.
1280	KVWG	TX	PEARSALL, not hrd by Falconer.
1320	WHIE	GA	GRIFFIN, hrd by O'Shea.
1340	WDCR	NH	HANOVER, hrd by HWB, CD, RA, JS, KA.
1400	WOND	NJ	PLEASANTVILLE, hrd by Forth, O'Shea.
1450	KOKO	MO	WARRENSBURG, hrd by Starr, Arruda.
1550	KOQT	WA	BELLINGHAM, hrd by Starr, not hrd by Arruda.
1560	WBUK	MI	PORTAGE, hrd by Boyd, Starr, Arruda.

SUNSET & EVENING

590	WROW	NY	ALBANY, 12/13 w/Albany wx, CMW/WOW QRM 2359. (CD-IL)
620	KWAL	ID	WALLACE, 12/29 w/ID 1901, into 15 min Paul Harvey pgm sponsored by "Pick Quik" grocery o/wk, nulled KGW.
680	WCTT	NY	CORBIN, 12/12 good 1656 w/WPTF nulled. (MPO-NC) (NH)
690	WVOK	AL	BIRMINGHAM, 12/27 in CBF null 1735-1745 s/off w/rr mx, no SSB. (GMS-NY)
730	WLOR	GA	THOMASVILLE, 12/24 1658-1710 w/IDs, Thomasville ments, nx, PSAs w/CKAC nulled. (RA-MA)
	WPAL	SC	CHARLESTON, 12/21 1714-1715, just in time for s/off atop freq, no SSB. (RA-MA)
	WPIT	PA	PITTSBURGH, 12/26 1650-1700 s/off, good sig w/Billy Graham followed by IDs, nx, wx, detailed s/off, no NA.
810	WQIZ	SC	ST GEORGE, 12/13 good w/soul thru WGY 1710. (MD-MA)
900	WGOK	AL	MOBILE, 12/11 vy good w/s/off, no SSB 1759. (MPO-NC)
910	CBO	ON	OTTAWA, 12/19 "Cross Country Checkup" into CBC ID in clear 1859. (CD-IL)

	WOKK	MS	MERIDIAN, 12/18 "Evening Nx Roundup" 1805, solid. (CD)
	KAMD	AR	CAMDEN, 12/30 U. of AR bkb, local spots 2019-2049 w/ no sign of KGLC. (TF-KY)
930	WGAF	GA	VALDOSTA, 12/30 2019 w/local spot, then KAMD took over.
	KBFW	WA	BELLINGHAM, 1/1 ID in s/off 1943. No SSB, used "Happy Trails". KSWB, KSEI nulled. (NH-WA)
960	WPIR	VA	ROANOKE, 12/18 nx/C&W 2004-2013 w/WERC. (CD-IL)
	WBOC	ND	SALISBURY, 12/12 o/WELI 1633 w/ID, end of FB game. (RA)
990	WNRV	VA	NARROWS, 1/2 1720-1725 o/WIBG w/IDs, PSA, orch mx. (RA)
1000	WQTY	AL	MONTGOMERY, 12/31 s/off 1745 after local nx, think they mentioned WFMI-FM. (GMS-NY)
	WXTN	MS	LEXINGTON, 12/31, 1752-1800 s/off, SSB w/local nx/wx, short rlgms pgm, good signal. (GMS-NY)
1070	WINA	VA	CHARLOTTESVILLE, 12/29 1648-1700 w/rr into CBS nx 1700. Promo as "Your Great American Mx Machine". (GMS-NY)
1110	WZAM	VA	NORFOLK, 12/12 after WHIM s/off mixing w/WBT 1643-1647 w/ID, local spots, wx, sports. (RA-MA)
1170	WCLN	NC	CLINTON, 12/31 1652-1658 u/WWVA w/PSA, IDs, mx, nx. (RA)
1190	WAVS	FL	FT LAUDERDALE, 1/2 1728-1731 wk u/WOWO w/all nx, "waves" IDs. (RA-MA)
1220	WENC	NC	WHITEVILLE, 12/12 atop after WRIB s/off w/WGAR 1647-1649 w/spots. (RA-MA)
1260	WMIQ	WA	MOSES LAKE, 12/30 1847 local spot, wx, C&W, call ID 1854, KTEE off 1845, KMCM nulled. (NH-WA)
1360	KXOL	TX	FORT WORTH, 12/19 "KXOL Nx", "Rocky Davis KXOL" IDs 1824, 1829 w/KSCJ, (CD-IL)
1390	KCEY	CA	TURLOCK, 1/3 1858 nx, wx, ID 1859 1/2 w/KSLM/KBLW. (NH)
1430	WBLR	SC	BATESBURG, 12/13 good w/s/off 1715. (MPO-NC)
1470	WNAU	MS	NEW ALBANY, 12/30 1958 w/local spot, nx, wx. (TF-KY)
	KLCL	LA	LAKE CHARLES, 12/30 2005 u/WNAU w/wx fr KLCL Country.
1510	CKOT	ON	TILLSONBERG, 12/4 ID & off 1645 vy good. (ers) (TF)
1520	WVOB	MD	BEL AIR, 12/31 w/s/off wk 1647 after WTHE; "Bel Air Bcing", and ment of studios at 2 Henry St. (HJH-PA)
	WTGR	SC	MYRTLE BEACH, 12/12 atop w/rr 1643 (MD-MA) ** 12/12 1653-1656 loud o/WKBW w/rr, quick IDs. (RA-MA)
1550	KQWB	ND	FARGO, 12/17 s/off w/FM plug, no SSB, mucho QRM. (CD)
1560	WTAI	FL	MELBOURNE, 12/30 1658-1710 C&W, spots, IDs w/WQXR. (RA)
1580	WSKT	TN	KNOXVILLE, 12/4 1700 s/off. (ers-NJ)
	WCDM	??	Pirate w/s/on 1742, fair sig looping EW. "Gd evening this is WCDM, 1580" into prog rr; good sound. (HJH)
1620	WENJ	??	Pirate 12/31 1903 w/"1620 Radio, WENJ" IDs. Wk sig, mix of oldies and modern rr. Assume this in NJ. (HJH)

MIDNIGHT TO SUNRISE

540	CBT	NF	GRAND FALLS, 12/20 fair mostly u/SSers 0448-0515 w/typical CBC early AM nx stuff, TCs 1 1/2 hrs ahead. (HWB)
710	WKJB	FR	MAYAGUEZ, 12/6 0430 w/SS OM, ads, TC. WOR off. (ers)
730	CHIR	ON	LEAMINGTON, 12/12 w/"Cheer" wx 0220, ads, ID as CHYR.
730	CKAC	QC	MONTREAL, 12/20 atop freq 0022-0028 w/FF ID. (KA)(ers)
740	KSSS	CO	COLORADO SPRINGS, 12/6 0350 w/ID on ET. (KDF-IL)
850	WJAC	PA	JOHNSTOWN, 1/3 s/on 0530 w/vocal Lord's Prayer. (JS)
860	CJBC	ON	TORONTO, 1/3 0525+ w/ET/TT; one of the very few regular Canadian TTers. (JS)
910	WGBI	PA	SCRANTON, 12/18 0206 s/off, FM plug, SSB solid. (CD)

CKLY ON LINDSAY, 12/20 0045-0102, discussion pgm, Xmas mx, nx, wx, sports, s/off w/GSQ, mixed w/CBO. (KA-VA)

920 CJCH NS HALIFAX, 12/20 0103-0120 w/CKCY/WJAR OC, T-40 w/IDs between records & PSAs. (RA-MA)

930 CFBC NB ST JOHN, 12/20 0343 way atop w/rr. (MD-MA)

WBEN NY BUFFALO, 12/20 0400 "Ben Nx" into CBS w/WGNT. (CD-IL)

960 CKWS ON KINGSTON, 12/20 0036-0043 w/nx,wx,ads all alone. (KA)

980 CKGM PQ MONTREAL, 12/20 0131 LOUD w/rr,IDs "98 mx radio CKGM".

990 CBY NF CORNER BROOK, 12/20 After 10 yrs, noted way u/ (HWB) WNOX 0429½ w/s/on annot, to quick nx or sx, wx 0431-0431½, //CBT-540. (HWB-OH) ** 12/4 Slid from u/WNOX 0432-0438 w/pgm notes, marine wx, NF wx. (NZ-NE) Drool.... ECR....

KKIS CA PITTSBURG, 12/11 0437-0440, MBS sports, ID into Jepko, surprise at fair level. (NZ-NE)

1060 WRMF FL TITUSVILLE, 1/3 0347-0401 ETing w/rr/pop w/IDs. (RA)

1070 WFLI TN LOOKOUT MTN, 1/3 ET/MX w/ID 0203 loud. (JS)

WAPI AL BIRMINGHAM, 12/13 testing w/ID 0245. (ers-NJ) (GMS)

1110 WZAM VA NORFOLK, 12/28 ET/TT 0017-0030, good but some WBT.

1220 CHSC CN ST CATHARINES, 12/13 ID, ad, MoR 0350. (ers-NJ)

1240 CFLS PQ LEVIS, 12/20 atop jumble w/rr, OM in FF 0357. (MD)

1250 WMTR NJ MORRISTOWN, 12/20 good on ET/soul mx 0409. (MD-MA)

1260 WIBV IL BELLEVILLE, 12/13 good w/fbl scores 0009. (MPO-NC)

1280 WGSO LA NEW ORLEANS, 12/20 w/EL mx, ID as "the gentle sound of GSO" 0240-0300, nx/wx on hr, solid. (KA-VA)

UNID ?? Tter 12/13 starting 0220. (ers-NJ)

1300 WMAK TN NASHVILLE, 12/20 "WMAK Nx-Whenever it happens" ID 0257 into Tony George Show. Local level. (CD-IL)

1310 WCAM NJ CAMDEN, 12/13 w/gospel pgm, WJLK off 0150. (ers-NJ)

WGH VA NEWPORT NX, 12/13 0200 s/off, no SSB. (ers-NJ)

WJLK NJ AS BURY PARK, 12/13 off for 2nd MM in row. (ers-NJ)

WDOD TN CHATTAHOOGA, 12/13 gd 004, TT,OC, ID,more TT. (MPO)

1320 WKAP PA ALLENTOWN, 12/20 ET w/rr, ID,TC about 0220. (HWB-OH)

1340 WBRE PA WILKES-BARRE, 12/20 surprise in fade of WDCR test 0100 w/AM/FM s/off "all nx radio". XR in Kingston to SSB 0100:20-0102:30. (HWB-OH) ** 12/20 0027-0045 wk in WNBH null w/NIS while copying WDCR. (RA-MA)

1360 WDRC CT HARTFORD, 12/27 0135 noted off or w/low pwr. (RA-MA)

1380 WPHM MI PORT HURON, 12/13 s/on w/ISSB way on top 0458. (JS)

1400 WDOT VT BURLINGTON, 12/28 mixing w/local WICK w/Mx of '76, ID 0205. (HJH-PA)

WSYL NY BUFFALO, 12/6 0110 w/ID,wx thru WOND, etc. (KDF-IL)

1410 CFUN BC VANCOUVER, 11/29 rr w/munts of BC, "C-Fun". (RCW-KY)

1440 WHIS VA BLUEFIELD, 12/18 noted ANing w/rr 0310+. (JS-OH)

1460 CJOY ON GUELPH, 12/13 s/on 0500 w/O' Canada. (ers-NJ)

1490 WSIB SC BEAUFORT, 12/12 gd thru mess w/ID, local spot. (MPO)

1520 UNID ?? Eter 12/13 ET wrecking WKBW 0507-0516. Repeated "testing 1-2-3-4", and played wings, Boston mx. (WHA)

1530 WTTI GA DALTON, 12/20 another HS-style ET/mx 0200-0220+, also 1/3 0330-0345. (JS-OH) ** 12/20 0233-0240 ETing w/fair sig, IDs/OC/mx. (RA-MA)

KNBI KS MORTON, 12/13 FC/TT in progress at 0113, off w/ID 0120. Formerly 0115-0130. (JS-OH) (RCM)

KRNX WY CHEYENNE, 11/29 u/KPEK w/NIS and "KRNX Cheyenne" ID.

1550 WCBJ IL MOBILE, 12/18 ET/OC/MX 0315-0340+. (JS-OH)

KRGO UT GRANGER, 1/3 1st time 0338 w/station break. (Bull-DC)

1560 WTAI FL MELEBOURNE, 12/20 loud ET/TT/C&W 0200-0220+. (JS-OH) ** 12/20 0215 apparently testing w/local spots,OC. (KA-VA)

WVAK IN PAOLI, 12/13 FC/TT 0515-0530, IDs start/end only.

KKAA SD ABERDEEN, 12/11 fair w/C&W 0210-0230 o/ (JS) nullled Cuban. (MD-MA) ** 12/12 "my kind of country, my kind of mx", "Double K double A", ads, C&W 0250.

1580 WORV MS HATTIESBURG, 12/20 RC w/usual organ mx 0215-(ers) 0230. This seems to be regular, hrd many months. (JS)

1590 WACD AL ALEXANDER CITY, ET w/OC/IDs 0155-40, 0200. (KA-VA)

KYOK TX HOUSTON, 12/20 u/WAKR all AM w/talk, Xmas mx. (KA)

WGDL NC HIGH POINT, 12/20 starting ET 0411 w/ID into Xmas mx, OC w/WAKR/KYOK. (KA-VA)

WGGO NY SALAMANCA, 12/13 ET. ID 0320. (WHA-NY)

WSMA MI MARINE CITY, 12/31 w/C&W after nx 0600-0610. (MH-IN)

1600 KCRG LA CEDAR RAPIDS, 0/mess to 0450 w/rr 12/13. (WHA-NY)

Th th th th that's all folks. Changes will appear next week.

Reporters:

WHA	BILL ANDRES	Richmond Hill, NY	HA-600, loop
KA	KELLY ANDREWS	Richmond, VA	HQ-180, loop
RA	RAY ARRUDA	New Bedford, MA	SX-122, SM-1
HWB	WES BOYD	Girard, OH	HQ-180, loop
JWB	JOE BRAUNER	Punxsutawney, PA	Radio
Bull	THOMAS BULL	Washington DC	51J4, Sanserino
MD	MARC DELORENZO	Centerville, MA	HQ-100, SM-2
CD	CARL DURNSVICH	Stone Park, IL	Car Radio, whip
JF	JEFF FALCONER	Clinton, ON	51J4, SM-2
TF	TED FLYWHEEL	Louisville, KY	HQ-129X, SM-1
KDF	KARL FORTH	Villa Park, IL	HQ-160, SM-1
HJH	HARRY HAYES	Gouldsboro, PA	T-0, SM-2
NH	NANCY HARDY	Aberdeen, WA	HE-30, SM-1
MH	MIKE HOGAN	Highland, IN	Panasonic 887
PRM	PAUL MOUNT	Teaneck, NJ	Radio
MPO	MIKE O'SHEA	Lowgap, NC	TRF
GMS	GEORGE SEMKO	Buffalo, NY	TRF
ES	ED SOULE	Huntsville, AL	Astronaut 4
JS	JERRY STARR	Hubbard, OH	HQ-180, etc.
ers	ELLIOT STRAUS	As bury Park, NJ	R390A, SM-2
RCW	BOB WALKER	Westport, KY	HQ-129X, loop
W'ski	BOB WESSOLOWSKI	Milwaukee, WI	Philco, loop
NZ	NEIL ZANK	Lincoln, NE	HQ-180, loop
ECR	Me	East West, NV	HQ-160, SM-2

Until next time, 73 and best of DX de ECR...

ECR

dxchange



R. J. Edwards
P.O. Box 127
Beantown, N.J. 07005

As noted in prior issues of EQ, this column will be edited here at HQ for the time being. We apologize for its long absence, and again encourage those who had submitted ads during the past several months to resubmit them. We also encourage the support of the rest of you. This column has rarely had the support which we feel it should, and we anticipate its appearance every month during the DX season, and every other month throughout the summer. You may submit items for sale, for trade, or wanted to buy covering equipment, components, literature and information related to the hobby, i.e., radio, electronics -type stuff only.

WANTED:

DX NEWS, 1973 and back; preferably to buy, however will borrow to zero. Especially want 1970-72 & 1964-66. If borrowed, all costs paid. (Chuck Hutton, 2114 Myrtle Ln., #1, Decatur, GA 30033)

A copy of the article on mechanical filters from the June-July 1965 issue of Radio-TV Experimenter. Costs paid. (Hutton)

RUSHAK R-88 CHART RECORDER, to buy or even to rent for a season. Paper included. (RJE c/o EQ)

FOR SALE: (RECEIVERS)

TRAKE SW-4A w/ matching MS-4 spkr, plus \$20 worth of spare tubes. Covers LW, MW, Int. SW. Top 1/2 of cabinet repainted. \$180, money order or personal check only. For info call collect (417)-537-8604 after 2200 CST if interested only. (Cecil R. Weinslein, Box 52, Golden City, MO)

HAMBURGER HQ-180. Write for information. (Levi Myers, 116 N. Queen St., York, PA 17403)

FOR SALE: HAM GEAR

CLEGG FM-27E 2-meter transceiver. Fully synthesized, 25-30 watts, w/ diacrin. str. \$225. (Tom Sandstrom, Box 205, Willingboro, NJ 08046)

FOR SALE: (ANTENNAS, ETC.)

NRG 4' ALTAZ. LOOP W/ FET AMP. Wound w/ #12 wire, fitted w/ brass threaded base. In perfect condition. Complete \$55, pickup only. (Myron Gray, 122 Broome Ave., Atlantic Beach, L.I., NY 11509. (516)-239-5674)

SPACE FET AMP. for NRG 4' LOOP. \$20, pickup only. (Gray)

FOR SALE: (ACCESSORIES)

PACO MD. G-30 HF SIGNAL GENERATOR. 7 band coverage + TV & FM markers. \$10 v. \$0 \$20, pickup only. (Gray)

HEATH Q-MULTIPLIER, MOD. QP-125. \$15, pickup only. (Gray)

HEATH Q-MULTIPLIER, MOD. QP-10. \$10. (RJE)

PARASINIC REEL-TO-REEL TAPE RECORDER, Mod. EQ7003. \$25, pickup only. (Gray)

ZENITH HEATPIQUES, MOD. 839-33. Built-in volume & tone controls. \$19, p/up only. (Gray)

RCB LONGWIRE TUNER, dual condenser tuning. \$9, pickup only. (Gray)

GRUNIG HEIGHT REEL-TO-REEL TAPE RECORDER. Mod in mint condition. w/ mks. \$9, p/up only. (Gray)

ASSORTED BENCHTOP AUDIO FILTERS. Will include at no charge to major purchaser of other listed items. (Gray)

FOR SALE: (MISCELLANEOUS)

DE NEWS, August 1969 to present. Make offer. (Gray) ** You listening, Chuck H. 7-RJE

SCOTT STEREO AMPLIFIER MD. 299. Mint ex, orig. price c/\$250. Push-pull tube output, filter features, aux. inputs, extra spkr. outputs, tape outputs, etc., etc. Weighs over 30 lbs. \$30, pickup only. (Gray)

DUKANE P.A. MIXER-AMPLIFIER. Tube-type, 50-watt mono, 5 mic. inputs, 1 aux input, master gain & tone controls, rack-mounted, with prints. \$50, pickup or you ship only. (RJE)

16-Ohm SPEAKER in gray cabinet (wood covered w/ plastic coating). Int. ex. Approx. 8x12x5". \$10. (RJE)

CR RECEIVE CONVERTER for car radio. Ameco. Easy-to-install. \$10. (RJE)

ASSORTED RESISTORS, CONDENSERS, HARDWARE, ETC. No charge to major purchaser of other listed items. (Gray)

ASSORTED COMPONENTS: Resistors (1/2, 1, 2 watts) 5¢ ea., 25¢/1; capacitors 10¢ ea., transformers, switches, connectors etc. Send \$3.00 for list or take potluck. Most resistors never used, esp. 1w. Also, meters, wire, cable, adaptors. Enquiries for your particular needs welcome if w/\$3.00. (RJE)

BACK ISSUES OF DEB VOL3. 41,42,43,44 plus some prior. Individual copies, no total vol sets available. (NRG HQ, attn:RG3)

1930's RADIOS: several, priced to move, all working or in need of only minor repairs. Prints available on most. Send \$3.00 for list. (RJE)

Well, that's about it. You can see the range of stuff you can get into the column, and we hope that you will. Adn will normally be run 3 consecutive editions of the column, and then dropped. We'd appreciate it if you'd let us know what's been sold, so we can delete it.

73, de RJE RJE

Hold everything! One more came in just after finishing this....

FOR SALE: RECEIVERS

RAPID SHACK RX-160. 150 kHz - 30 mhz. 1 yr. old, matching spkr. Shipping paid in US. \$115. (Paul Harle, 2505 Pennsylvania Ave., Dubuque, IA 52001)

musings of the members

editor: Ernest R. Cooper
5 Anthony St.
Provincetown, MA. 02867

The opinions expressed in this column are those of the individual members, and do not necessarily reflect those of the editor, the publisher, or the National Radio Club.

MIKE COLLINS - Apt. 731 - 91 Strawberry Hill Avenue - Stamford, CT- 06902
Someone reliable tells me the reason WJR-760 Detroit left CBS for NBC last 1/1 after so many years is that WJR wanted the right to delete certain car commercials from the network news & shows. The reason was that WJR gets a high price for its local commercials, including car commercials, but the car ads were slipping through on WJR anyway via the network news. CBS refused, & from what the source says, NBC agreed to allow WJR to delete the car ads, and this was the main reason for the switch. It surprises me how the new station on Prince Edward Island, CHTN-1190 has completely destroyed WOWO's signal in this (the metro) area. WOWO used to be L&C almost every night & now it's unlistenable just about every night. (Why not write WOWO about it, Mike? -ERC) Bob Dayton, one-time WABC DJ is now doing afternoon drive at WGBS-1240, Presport LI. The Mothball Memories continue to be very interesting. Regarding the weird stations that only came on for a few minutes, I wonder if the FCC expected anyone outside the immediate Washington area to be able to hear the WX report on 690 w/CFRB on the frequency? Probably the best candidate for weirdest stations now-a-days is KPFC-1240 Pasadena which I understand operates Sundays for 18 hours & for four hours Wednesday evenings. From what I understand the station is now owned by the owners of WTHE-1520 Mineola, LI meaning it probably runs paid religious & block programming like WPRE. What is weird about KPFC is that it is NOT a share time station, but when it is on, KQJF-1230 Los Angeles has to cut back power in the day on Sunday, & so does a San Bernardino station on 1240. Is KTNQ-1020 Los Angeles on full time yet? Will it continue to operate on full day power WMA I wonder, or will it have to give this up? My new phone is 203-359-3962. Best wishes to all ERCDers for the New Year.

CURTIS D. ENGBERG - 80 Concord Road - Wayland, MA - 01778
12/16- At 12:05am another strange unID heard on 1582 w/musical selections. 12/19- At 6:15pm 1286 featured excellent, rock-solid ol mx; other high-band TA's in well also. 12/20- Just past midnight both low and high band TA's in quite well with 1502 one of the loudest this particular MN. 12/21- Around 7:15pm Vatican-1529 was in w/excellent mx, 1286 likewise, and 1106 also excellent with combination of talk & music. TA's have not been as good generally as they were earlier, but there are always a couple of very good ones every night. Tonight, 12/28, it was Morocco-818 that was outstanding. Then I got a superpower signal on 602A which IDED @ 7:30pm as R. Rebelde, Habana, Cuba. I wonder which one this is, or if it intends to remain there. Christmas Day was very good to me with three new IDs plus other good unms. When I got home from midnight church services I tuned in to see what was on and heard a fairly strong signal on 1560. Hoping it might be KEAA which has eluded me so far, I waited and got an ID @ 1:45am as WPKY on for an RT! At 6:07 pm, WBSO-1590 was completely dominating the channel, with selections interspersed with auto ads. Their strength indicated they were probably still on day pattern. Then @ 7:30pm I got a clear ID of R. Cayman-1205 and checked them //1555. At 7:39 a strong ID from R. Sonora-1188 for another newie. Good SS signals also noted on 1197, 1176 & 1155, but unID

KEW CHATTERTON - R.D. #2 - Mannsville, NY - 13661
It look like a good DX season here in snow country. The
TESTs have done none too well yet this season with only W900-940 & WDCR-

(Chatterton) - 340 being heard 12/20. I slept through the WGSM-740-TEST but unnn anyway. 12/18, 5pm s/off KMTT-440 Iowa. During s/off they repeatedly said "Radio WMT" & gave full call all only once. 5:15, WHLM-550 noted on RS. 12/22, 4:30pm, WLSH-1410 s/off w/WOTT. 4:32, WDOV-1410 weak c/WPOP w/WOTT gone on night power & pattern. 4:45, WHAG-1410 s/s/off in the clear. The last two were new here, & reported. 4:54, WUNI-1410 w/ID & into c/w new, but not enough to report. Oh well, 2 out of 3 isn't bad. 12/23- 5:30pm, CKCB-1400 s/all, dominating for more than a half hour relaying CKBB-850 & giving dual IDs. WBUZ-1570 IDs as Fredonia -Dunkirk. The Verie Fairy has been good this Christmas season with 12 in the week before Christmas. v/1- WILM-1450, WORX-1270, WTOW-1570, WMTR-1250, WVOC-1460, WINA-1420, WRKL-910, WCUE-1150, WQSR-1550, WELW-1330 1330, WGEA-1100, & WEDC-940-TEST. May the Verie Fairy bring all of you the best in the coming year and with luck, luck, luck, I'll get as many veries as ERC. I'm only 3,000 behind him. Happy New Year, & 73.

BEN DANGERFIELD 3rd - 202 Governor's Drive - Wallingford, PA - 19086
Somehow, through the parties and the bustle-bustle of this Christmas season, I had to find time to send in this Musing. What have I been hearing? Well, my DXing is pretty much confined to the evening hours, and the afternoon if it happens to be a weekend, for I seldom get up on MN unless I don't have to go to work the next day. When not looking for exotic stations & new countries (I added two this season) I enjoy the big bands and nostalgia: WOR Saturday night; WGN; & nearby WJIC-1510. This is popular mx as it should be. But the DX: I got a fairly good report out to Turks-Caicos-1552 for reception of 12/8, 6:15-9 pm. When the verie is in, I will count it as another new country. I haven't heard this one much since, & suspect it has slid to 1550. Lots of TA's in December. A new one logged 12/20 @ 9:42pm was Caroline-II on 1562; veddy nice signal, w/EX programming, plenty of IDs, & TX announcements. There is a Philly station on 1605k whose call could be WSWT or WSWF; possibly the latter as it appears to be in SW Philadelphia, w/RR, & even has ads. It is strongest near the airport. Sunday 12/26 was quite a day. I suspected something when WJIC was overridden @ 2pm by two other stations on 1510, & the middle & upper parts of the band were wide open, nighttime CX. Then about 50 TA's were noted between 4-5pm, the first heard being Guinea-1402, way up @ 4, & shortly afterward a mix of Canaries & Azores on 836. But the real powerhouse came after 11pm. An unbelievable signal from what I suppose was the East German, R. Volga-1322, in RR it seems, still going strong at midnight. Equally impressive was Vienna-1475, which could have been in the next room. Just about every TA frequency from 1088 to 1602 had one or more occupants. Kaunas-1385 came on @ midnight & knocked off R. Centro, Madrid. Budapest-Petofi-1187 was there just after midnight, & the RTF outlets on 1376 & 1554 were raising the roof with the Arabic program, and many more. 12/28- Not bad either, w/Horby-1178 atop their frequency @ 5:30pm, and later very strong signals fro Morocco & Algeria. I haven't heard too much from the LA's lately, except the usual splits and Cubans.

HARRY W. JONES - 9612 Atwood Road - Vienna, VA - 22180 (K4FIC)
Propagation CX have improved since my last Musing and I am pleased to report TA loggings again, the first since October. In the early AM of 12/19, Monte Carlo on 1466 12:05am, Langenberg, Germany-1586 and Nice-2-1154 were putting in exceptionally strong signals here. However, there were no low band openings on this date. I have developed a successful technique for using the Autek Filter with the SPR-4 on difficult splits. Adjust the Autek on the "peak" position for optimum results, while fine tuning the SPR-4 with appropriate setting of the RX notch filter control. Also, for loop nulling out domestics on even frequencies, the best performance of the Autek is in the "notch" position. During the evening of 12/18, using the above techniques w/a Dymek DA-3 ferrite loop, produced R. Butatenna-810 Bogota @ 8pm, SRS-725 Surinam 8:10, YVLL-570, R. Rumbos, Caracas @ 9, YVHW-940 R. Punto Fijo 9:25, PJB-800 Bonaire @ 9:45pm & R. Belize-834 @ 10:15 all with "arschair copy." However, I wish

14
(Jones) to reiterate previous comment that audio filter is no substitute for selectivity in R.F. & I.F. RX signal path circuits. Happy New Year.

DAVE KORINEK - 505 Redondo - Oceanside, CA - 92054

I thought since I just joined the Club in October, it was time an intro was in order. So, here goes: I'm 20, have been DXing since 1971 (seriously since 1974), all DX has been done on a Collins R-388/URR w/an assortment of LW's from two locations. First was Ft. Walton Beach, FL (8/74-10/75), & now here. Incidentally, I was in Ft. Walton when Hurricane Eloise raked the Florida Panhandle w/the eye making landfall just 18 miles E of my location on 9/23/75. We only got 128 mph winds. I'd give almost anything to experience another day like that. (Huh? -ERC) In Jan. '75, I had forecast a hurricane to hit Ft. Walton in 9/75. After making the forecast & convincing a few people that I worked for (whose businesses were right next to the Gulf) that my forecast was real, the rest was just plain luck. But for some reason, I felt sure. Anyhoo, here are some stats from my current location, beginning Oct. '75: 401/212 stations, 41/39 states, 8/6 provinces, 34/11 countries. I spend about 30 hours a week on DX-related subjects. I attended ASL's Thanksgiving GTG in San Diego, my first public exposure to the DX world. I met some bigger names in DXing on the WC - BLH, ASL, HJC, Don Erickson, Randy Seaver, etc. Mr. George McKay of McKay-Dymek respectfully showed off his DA-7, & I got my first look at a functioning Sanserino Loop, my next investment. Until next time, good DX, and R. Cayman-1555 @ 5:56am ELT. (Welcome to NRC & Musings, Dave, & we hope for many many more Musings from you! -ERC)

JIM LOVELL - 8021 Kensington Boulevard - Apt. 15 - Davison, MI - 48423

Happy New Year! I hope everybody has had a happy holiday season. With a couple weeks Christmas recess from MSU I've had a little more time to DX. First DX session of the month of December was the 6th. That MM yielded WJAP-630 @ midnight w/CBS NX fair w/GFCO. WNBX-1450 limped in @ 12:30 w/r/c. That means I only need WMQ to complete MI on 1450. Listening for WOND-1400-TEST I heard code @ 1:03 & 1:09, and they were deep in the ruck the rest of the time. KKJO-1550 s/off was caught at 1:21. On 12/23 several southern stations were putting in good signals @ SSS including semi-regulars WVOK & WCPC, plus newbie KOKA-1500 @ 5:08 u/CBE. MM 12/27- WTRX-1330 noted in one of their rare SPs from 12 on. HJJM-660 boomed in @ 1:13 w/"R. Uno" ID. At 2:30 I tried for WNNO-990-TEST but heard only WNOX, was WNNO on? Tentative on KOKO-1450-TEST as TT & what seemed to be code IDs @ 3 & 3:10. I will check tape for a positive logging. Later that morning @ 10 I was very shocked to have WAUK-1510 booming in w/relay of FM. No evidence of usual WJCO, sure was nice hearing some "beautiful mx" instead of the normal c/w. That pretty well sums up DX to date. On the travel front I was down in LAD-Land 12/10-13 visiting the family for the holidays. I had planned on a chat with Gary Atkins & Ted Fleischaker, but my mother took suddenly ill so I was unable to contact either. One other matter, some members might be interested in comes in the form of a letter from Felix Helz Contreras M., of Cucuta, Colombia. He is involved w/a new DX Club "FRIENDDXINCOL" which means Friendship DX-International Colombia Club and they would like some DX materials. I would suggest SS for any correspondence. I know nothing about this gentleman or his organization, so judge for yourself. In case you're curious how he got my name & address he tells me he got it from Rafael Beira Rey, the Gerente of La Voz de la Gran Colombia (HJBK-1400) in Cucuta who told him I am a "radioaficionado o Dixistra" on the basis of a 1970 reception report. How's that for keeping a report on file? I guess I've taken up enough space for this time. Until next, 73 & very best DX to one & all.

MIKE RAMIREZ - 5218 Roundtable - San Antonio, TX - 78218

WELCOME to Ron Schiller who now resides in Dallas (as if you didn't know). Salutations to Robert Hackett who lives in San Antonio, maybe we can get together some time. Also congrats to Eric Rittenhouse on taking Boyd's job, & to Dan Myers on taking the chores of FAS & to the LADS for taking over the club publishing & to anybody else who did any-

15
(Ramirez) thing. On the other side, I'm sorry to hear about Wes' giving up his job, likewise Carl Junker & the NJPC - maybe it's an omen. Late Season's Greetings (natch!) and a Happy New Year.

RONALD F. SCHATZ - Box 592814 - Miami, FL - 33159

It's been months since I've Mused last; I've been swamped with personal matters, including a long-hour job & litigation following an auto accident. Now, the economic situation being what it is down here, I plan to move out of Florida in a few months to another part of the country. More on that later. To answer some long-standing questions: While Radio Millon was retuned to operate on 1560 it never did test there - as far as I know. Also, my comments to the FCC re "superpower" were strictly my own and definitely not in the name of R. Millon; law & consulting firms please take note. WFAB-990 is still on the air as of 12/29, probably waiting for the FCC to forcefully close them down. WINZ-940 will continue all-NX & join CBS after the NIS era. Richard Clark stopped by one day in transit to Puerto Plata, R.D., his new home. Cesar Objio, w/wife Carmen, vacationed in Miami last August, & we had plenty of non-DX fun. Cayman-1555 is a fair daytimer here, but it's a chore through WRHC-1550. 1205 shows a trace of signal, weaker than Belize-834. A mystery at the moment is a Caribbean-ara "tester" on 1115k w/hard-rock albums or just a strong dead carrier early AMs. By the way, Monteria is the one being heard on 1081k. One minor tragedy: All my rustrak-88 graphs were thrown away as "scrap paper" by the cleanin' lady, now I have to start all over. I just ran down the daytime dial: I noted CMHV w/its 150kw drifting to 604 & whining against local WIOD. Something is on 920 down there, & R. Popular seems to have moved over to 1390 from 1360; I could only hear the latter from Key West before. Daytime (groundwave) countries down here are USA, Bahamas, Cuba, Jamaica, Haiti, Caymans, Dominican Republic, Belize, & the old Swan Island. FL, GA, SC & LA are my only states by comparison. I just logged WSST-800 @ 12 noon for my first domestic on that channel. DXers at my new "20" will hear from me soon; we also need someone to take my stead in Miami after I'm gone. Good DX to all. 73. (Which way's he goin', folks? -ERC)

LOUIS BUEHLER - 1123 Perry - St. Charles, MO - 63301

Well here I am back again to thrill you with my DXploits, for the month of December this time. All in all it was a pretty good month as far as adding stuff to the log goes. It started 12/4 @ 6:12am w/KAYQ-1190 MO coming up good enough to ID way down u/WOWO which usually hogs the channel here. 12/5, while trying for the WJAM I caught an ad for "Rib Supreme" in Chicago, presumably WVON, but still I haven't managed to get an ID on tape. WCSC kept fading in/out w/rr along with someone w/ a telethon-type program from "Faith Tabernacle Auditorium" at 1643 East Chester, & giving phone number 427-0881. They were asking for pledges to help them raise \$22,000 for a school. They s/off abruptly @ 2:03 w/SSB but no ID that I could catch, anybody know who? It was one of those really frustrating sessions. 12/24 was a lot better w/WNAX-570 SC @ 5:40am w/"Midwest Morning Show" folo by WRJZ-620 ex/WETE for first chance to tape new call. Next thrill was, hi, KSOO-1140 SD @ 9:30 w/ABC NX for fifth SD station. 12/25 was one of those times when you sit on a frequency for 30 or 40 minutes trying to dig out an ID from the mess & when you do it is someone you already have. I started @ 5am & didn't get anything till 6:45 when WOCH-1460 IN drifted in w/Christmas mx & ID, also I grabbed WVG6-1080 FL @ 7:13 u/KRLD/WKLO et al w/Miami-Ft. Lauderdale WX, 66°. At 8 I managed to pull off one of those coups that makes it all worthwhile. I managed pretty well to null WNOE-1060 which in itself is a pretty good trick here, & got an ID from WPHC TN & @ 8:09 WJLJ MS. Needless to say I was very pleased with it all. 12/26, @ 6:31am WPIA-900 KY sneaked in w/ID to bring my Louisville total to five, three to go. I was feeling pretty good about my TX total of 38 till I saw Ron Schiller's Muse of 12/20 with his 78 & ERC's 148. Looks like I will have to try harder. Till next time, adieu, adios, gut gilltig, 73 and like that. (It took 44 years to get those 148, Louis - about a dozen a year average! -ERC)

ERIC FADER - 23-35 Bell Boulevard - Bayside, NY - 11360

Hi all. Here's my first Muse since escaping from the Bicentennial, hi. And to a quick review of DX from Santo Domingo, 12/25-12/31. I was surprised at how well a few PR stations came in (WKJB-710, etc.) when I realized how mountainous the country is. Haiti wasn't heard at all in the daytime. As last year in Dorado Beach, PR, I kept no "formal" log & didn't spend that much time DXing - under ten hours all week. Daytime notes: Puerto la Cruz YV-640 had a good carrier days, as did Rumbos-670. Only two stations - HIN-2220 & R. Pueblo-1480 played EE rr, & they had SS talk as did everyone else. Night notes: Not too many surprises, but then I didn't expect much. ("You only get out what you put in", remember?) Mostly HJ's & YV's on every frequency. On 620, unID EE talk o/SS. Two on 650, SS. EE MoR-680 o/u WAPA. HJCZ-690 Ided. WLW-700, WGBS-710, WABC-770, unID-500kw (hi)-800, WBAP-820, WHAS-840, WGBS-880, WWDJ-970 incredibly strong, WBZ-1030, WHN-1050, KYW-1060, WTIC-1080, WWWE-1100, WNEW-1130 WHAM-1180 like a local, WFBR-1300, WKLX-1350, WLAC-1510 & WCKY-1530 were the EEs Ided or assumed. Other notes: Local HI2-730 played some EE rr @ 11:50pm ELT MM (12:50am Dominican time). WABC always gave R. Tequendama a good fight. R. Clarin was pestiest local, 860. YVNN-940 Ided as R. Punto Fijo as per WRTM '74, hi. Exitos had 980. Colosal-1105? Is that who it was there? R. Bogota-1010. Some HJ was mentioning "24 hours" in passing 1030. R. Tropical-topped 1040 SS mess. I Ided three on 1070: HIBI, HJAH & R. Santa Fe. Cuban ticker topped 1270. Soul mx, U.S. on 1340! Number one song in Santo Domingo is "De Verem." EE on 1370, & EE canned religion on 1380, also EE wx on 1390 1:15 MM. 1540 had R. Bahamas strong w/MoR & Christmas songs. Gospel-1600. I had two nice phone conversations with Cesar Objio, unfortunately I could not meet him as our hotel was far from his home. I hope your arm heals up OL, Cesar! Back to NYC for 1977 next time. 73s.

JEFFREY KAY - 12 Peveril Hill South - Toronto, Ontario - M6C 3A8

Hi everyone! I've been a member of the NRC since October & have finally decided to Muse. I'm 17 years old, in High School Grade 12, & an MW DXer with meager totals. I started DXing in late '73. As of 12/26/76 my totals are, heard 221 in five countries, five provinces & 28 states. I have veries from 150 stations in three countries, five provinces & 27 states. Veries have been coming in very slowly, some of the latest ones are v/q from WBAP & WWVA, v/1 from WKOX-TEST of 5/24/76, and the worst looking verie from KATZ-1600. In green marker is written "OK, thanks" and a signature in the bottom corner of my report. In November I received two CMA's from CKGM-980. I had sent them a report in 12/75 & received nothing. The RXes I am using now are a Panasonic portable & a Transette AM-FM clock radio. Is anyone else using these receivers? Soon I hope to get a Realistic TRF. Recent DX: MM 12/20- WDCR-1340-TEST came through very well. This was an interesting test to listen to. For less than a minute I heard WMID in the background. On 12/13 at about 2:45am the TT of WEAN-790 was heard. All correspondence welcome! 73, good DX. (Welcome to the NRC & Musings, Jeffrey! Please Muse often! -ERC)

GARY HOUDEK - R.R. - Munden, KS - 66959

I tried to hear the KFLA-1310 Scott City KS TEST but instead I heard WRR & ID "Radio 13 WIFE" @ 5:50am. New stations heard here: 11/18 - CKRC-630 Man. ID heard @ 9:42pm, then rr. 11/22- WAIT-820 IL was s/off @ 6:29pm w/QRM from WBAP. CHML-900 Hamilton, Ont. NX, then ID @ 10:05pm, weak signal. 11/29- KTTS-1400 MO ID @ 4:40am, then c/w, signal gone @ 5am 12/13- WKBW-1520. I was slowly turning dial when I suddenly heard ID WKBW then rr @ 4:53am. Report sent to WGAR-1220 testing 12/13 w/rr & ID @ 4:30. I also sent report to KOMA-1520 testing on 12/20 w/rr & several IDs from 5:07 to 5:30am. So far I have heard stations from 31 states with the most interesting station being WBSR-1450 Florida that was testing, good clear signal, several years ago. I heard this station on my car radio.73

OK, LADDIES - SHOOT ME THOSE MUSINGS! Deadline every THURSDAY. -ERC

HARRY J. HAYES - Star Route - Box 226c - Gouldsboro, PA - 18424

It looks like WWVA failed us all on Christmas morn w/AN c/w after mass. DX for Decemver goes like this: 12/12- TIW-775 Costa Rica good signal @ 11:15pm w/American rr, ID as R. Uno. 12/15- 3:51 WAKY-790 KY in early. 12/16- 4:14pm WARY-1590 RI in the clear w/s/off. V/s was surprised I got them past WQQW. 5pm, WMNA-730 u/WPIT w/s/off. 12/18 - 4:09pm, WTOB-1380 NC u/the slop all afternoon till 5:15 cut. Usually WBIC is here when CX are favorable for NC. 5:32, WSRF-1580 w/"Surr" ID. 5:45, WHHM-1580 TN. this is tentative, but definitely a 250w s/off at this time. 12/19- WDR-1586 W. Germany w/excellent signal, in till about 2am. 3:03, YVNW-940 R. Punto Fijo in well w/deep fades. 12/20- 1:05am, WDCR-1340 NH-TEST in excellent. 1:51, WKWK-1400 WV in w/T-40. UnID-1400 giving area code 614 @ 2:13. 3:33, WECO-940 TN heard well on TEST. 12/21- 5pm, WKLM-980 NC heard w/a nulled WILK. 5:30, WYNX-1550 GA heard for first time, on s/off. 12/22- 5pm, WEET-1320 VA dominating frequency w/c/w. 12/25- 12:10am, chanting fair on 529k. 2:29, HJNS-740 weak i/WKIS Christmas Carols, & Gutapurri IDs, your Potpurri, Ernie, hi. 3:10, WWVA-1170 WV not heard, hi. 12/26- Early skid this afternoon produced WHP-1400 Northampton MA w/nice ID @ 2:58. I also think WABY was in from Albany w/NIS. 4pm, WCNX-1150 heard w/ID way u/three or four other stations for a long-wanted one from CT. 4:58, I thought "I'm going to look for WCLN-1170 NC u/WWVA" & lo & behold they were there w/local NX w/Ae network "sport-sounders". Weak, but two clear IDs on tape. 12/270 CJJD-1280 ON heard for first time as this, ex-CHAM. 12/28- 2:30am, WDOT-1400 fair w/"The mx of '76". 12/30- 7pm, Antigua-1165 w/clear "Lighthouse" ID in EE. It sounded like they went into BBC NX but I could be wrong. 7:20 // signals of what sounded like a speech w/audience reaction in background interspace w/mx interludes w/talking in SS on 1010, 1020, 1030 & 1040. After 7:30 1020 & 1040 had separate programming. 1020 was YVRS, R. Margarita & 1040 was unID w/overmodulated SS MoR, must have been another YV. // programming must have been a Venezuelan presidential speech or something. It showed, anyway, the possibilities of YVs on 1010 & 1030. 8:22pm unID SS completely o/WBT-1110, which is odd. They had sports event w/mention of Caracas & Venezuela. Year's end total at 914 heard. 73.

BILL ANDRES - 101-25 115th Street - Richmond Hill, NY - 11419

Pretty decent session in front of the tubes/wires/coffee cups 12/20, even though storms & noise were all over the dial. I took a tape of WDR-1586 for a report, femme giving temperatures for cities, 1:49-2:05. UnID Eter on 1530, good levels 1:50 on, WTAI (I guess)-1560 on 2:05 -2:15 u/WQXR's OC. WTAI sounded RS. I say 'I guess' because no ID was heard, just spots for Cocoa & the area. Another unID ET to go into the vast unID log (ten times the size of the regular log) on 850 across 2:30, plus two (at least) mixing it up on 1550 across 3am. I caught the WECO-TEST (ID @ 3:40) w/TT. Also the WBCR TEST from Hangover, NH, code IDs heard but little else. Third newie of the morning was unexpected WEUP-1600, another daytimer on in the middle of the morning w/what sounded like RS, ID @ 4:02, OCon 1555 AN, probably needed Cayman Is, hard to pick w/WQXR down the road like the shadow of the Raid can discouraging visitors. That took care of 12/20. This past MM 12/27 sounded like great CX, but not a new one heard! The Lafayette seems to pick up WDR any time at all. But ask it for any other TA & it doesn't pick it. KFBK in the best I've heard in some while, hashed badly as WPTR & WKBW took turns playing splashy T-40 signals. WHN noted off for a while (& this is the 4th MM) @ 1:53. Back on RS later. The 990 TEST from WI didn't make it, possibly they w/a weak but steady lk tone. WKBW had someone battling him @ 4:09, rr, whoever he be. But I was just nodding out then & didn't have the energy to chase 'em. Entire night's log just seven lines of writing. There didn't seem to be anyone on testing. I spent some time looking for the new WRNJ-1000, around noon, bad WINS slop & some rr there, but not they. Intensified listening after I had phoned them (and they fed the station audio into the phone) revealed another station there u/whoever it was. This chase is gonna be fun. 73.

JEFFERY KLEPPINGER - 502 East 2nd Street - Northampton, PA - 18067

Well, I believe it is about time for another Musing though I have been rather inactive lately even though I had a lot of time off from the Coast Guard but spent time visiting old friends. This time I will give some DX CX from the ship (USCGC Gallatin). Using a whip antenna & Collins 651S RX, a lot of the NYC locals aren't too bad. On 1/3, about 6pm, WBAP-820 in clear bypassing WNYC-830 (using a 6k bandwidth). Daytime WKAP-1320, WAEB-790, & WSAN-1470 make it through, usually WKAP the strongest. At night, 790 is like a graveyard. So is 1320 & 1470 isn't dead, but a jumble. KXEL-1540 makes it through, virtually no WPTR! CKGM-980 in good an hour after SSS on 1/3. Rest heard in this time period: CKAC-730, WGN-720 (no QRM from WOR), but no WLW-700. WMAQ-670 in good, WSM-650, CMQ-640 weak at the moment. WIP-610 weak to fair, WFIL-560 good w/rr. WJJD-1160 strong w/a guy reading letters folo by c/w. WOAI came in on 1200 w/ announcer talking about their broadcasting & faded into QRM & QRN. WCAU-1210 in good day & night but hardly ever KYW-1060 due to WHN-1050. WGAR-1220 strong too. WERE-1300 in w/some WJW w/Mutual NX. I'm still using my HalliCrafters SX-110 & SM-2 still down, so I'm using a TV antenna. I am planning to buy a good FM Stereo in the near future, not for DXing, but for mx pleasure. Local FM WEZV-95.1 is not rr 24 hours w/SP MM 12-5. WSAN is progressive rr but every once in a while they throw in EZ or cl mx as well. Also, it is religion every SM 7-12:15pm after its 6-7am SP (SM only!) WKAP is community programming every SM 6-10am & Sunday night "open mike" talk show 9-12pm. WFMZ-TV-59 started about a month ago & s/on about 10, until midnight. Not much else to say & Happy New Year to all - you too, ERC!

GEORGE SEMKO - 46 Arcade Avenue - Buffalo, NY - 14226

CX of late have been fantastic. 12/31 most have been some sort of AU. On the date during SSS the signals of stations such as WCFL, WGN, WLS & CBJ were totally wiped out. At the same time, signals from the S such as WXTN-1000 & WQTY-1000 were coming in like locals. Mike O'Shea returned to Buffalo for the holidays & he experienced the same tupe of receptions over at his house. On the local scene, WEEB-970 is still all-NX & still signs off daily at midnight. WHIA-1230 is off the air, totally gone. One of my friends said they were shut down by the FCC, but I don't know if that's really true. The GM of WHIA also works at WDAY-1370 so maybe I'll send him a letter. I'm looking forward to seeing the NRS reprint list & the f/c list appear in DX NEWS. I assume the letter is almost ready, so instead of sending this checkto Mr. Fels I'll list it here: WFTY-990 second Saturday from 12-12:15am w/TT Amx. On their verie the GE said he was surprised I picked it up so I guess the signal doesn't get out very far. I received a v/l from WIOD-1480 on 12/30 for an 8/5/75 report - they mailed it 12/27/76 & used the 10¢ stamp I sent them! 73s & good DX.

BRENT TAYLOR - Box 57 - Doaktown, N.B. - EDC 1G0

Hi all! Please note the new address. We moved just before Christmas. I am only about 90 miles W of my old site so I won't bother changing my log & starting all over. This holiday season is the occasion of the first NBDXSTG (New Brunswick DX Get-to-Gether) hi. Tom Fawcett of Lechine, Que. is here & we have been doing quite a bit of DXing. 12/29, we began WELX-1350 @ 5:00pm, & quite a surprise was R. Continental-890 HIPJ on w/some sort of NXCst @ 5:50pm. They seemed to be switching WX readers w/a 'dateline' sort of beep sequence between each article. Also found was CRTF-Guadeloupe-640 @ 6:01 in FF. In addition we made a surprise catch of what appeared to be R. Raloj-1270 in Cuba @ 6:15 w/clicks every second and beeps on the minutes w/intermittent NX. By far the biggest surprise came this evening 12/30 @ 6:45 when Conakry was found on 1403 w/a powerful signal. Program content was African-style mx w/an FF announcer. A full ID came through at the top of the hour: "Vous écoutez la Voix de la Revolution & then into the NX in FF @ 7. As soon as I'm finished this Muse I will report to them. I must go now so 73, fardillarsnort & pontardulais.

BE SURE TO INCLUDE RETURN POSTAGE WITH YOUR VERIE REQUESTS. MENTION THE NATIONAL RADIO CLUB WITH YOUR REPORT TO HELP PUBLICIZE YOUR CLUB! -ERC

GRAY SCRIMGEOUR - 227 Hanna Road - Toronto, Ontario - M4C 3P3

I fixed up a connecting cord so I can now use both a speaker & my cassette recorder with the HQ-180, at the same time. It with all the LAs that have been heard lately. Very few TA openings evenings or mornings. To new (for me, anyway) stations: 12/16- WBAZ-1550 at 4:44pm OD; CKAP-580 @ 5:25 with an awfully cold WX forecast. 12/18- Probably unnn WCRV-1580 @ 4:15pm w/mention of Hunterdon County u/WPGC; unnn St. Pierre-1375 @ 5:10pm quite clear w/carols & ID @ 5:15; WSVS-800 @ 5:30 ID & FB; some TA's later & Mainflingen-1538 decent near midnight. 12/19- KRGO -1550 heard at last @ 2:13am w/WX for S.L.C. (that's station #25 on 1550 for me); HJAJ-760 LA de Barranquilla @ 8:45pm w/a Christmas ID & message; HJAN-720 @ 9:31pm w/call sign ID & "Em. Unidas" slogan (Station #700 in my Toronto logbook); R. Uno-775 @ 11:55pm. 12/20- WDCR-1340-TEST heard well from 12:10-12:40, w/WBRE the only IDable interference; CHVD-1230 w/a loud ID @ 1:06am. 12/25- WBSC-1550 at last @ 5:05pm u/CBE, in until just past 5:30 ID. 12/27- TIQ-1175 in EE @ midnight; SS on 645 probably Paraguay, but no ID in all the time I listened; another probable but still not logged was TA on 926 w/NX in DD (or GG) @ 12:31am - Belgium; another unID was a Colombian w/Garacol on 1140 @ 12:48am, is that Girardot? The Cuban on 650 IDed as LV de Cuba @ 1:30am //--CMQ-640. 12/29- 1580 was good @ SSS w/WVKO @ 4:50pm, unID w/Yankee Doodle @ 5:44 (again), & KLTR w/SSB s/off @ 6:15, Em. Rio Mar (unn) atop 1130 @ 11:55pm. 12/30- WWSW-970 @ 12:28am; several SS on 880 with little WCBS, including R. Honduras s/off @ 1am, & the Cuban. Maybe the LA split list should include Em Fuentes-919, often blunking out 920 here. I even sent out two reports - WDCR and CHVN-1190 (PEI is the only province I haven't veried!) Gad- this may become a habit.

73

RON B. SCHILLER - 7657 La Bolas Drive - Dallas, TX - 75248

Verie: v/l - KIMP-960, KNDQ-1530, KMAJ-1550, KJCH-1420, KTTX-1280, KLUK-1280, KILZ-560 (plus v/w & CM), KESU-1550. v/q- KKKO-850, KLRN-920, KPRC-950, CBR-1010, WIOD-610, WJJC-610 & KBBT-1230. v/r- KJEM-1530 & v/PP/c WWMT-1520 from '75 TEST. ELK says he enjoys getting the reports as such as sending the QSLs! KKKO's card is a folder arrangement with picture of station & CM. KBBT is a pix of night view of station, similar to WSNJ's. Recent heard: 12/17- KRUS-1490 s/on 5:55am (10g change), KEX-960 booming in @ 6:38 s/on till 7. Unn CBN-990 tremendous then, too. KPRM-550 booting KTB 7:12 on. Three Jacksonville stations heard, unnn KGNR-1500 AR @ 7:30, WLDS-1180 7:50 (IL), & then new WCRJ-1530 12/18 7:16-7:25 w/00S. KEBZ-920 noted 7:03-7:05 u/KARN. KBDK-1390 topping @ 10pm. 12/19- KREH-900 s/on SM @ 8; KWFA-1500 s/on 8:30. 12/21- NIS on 1490, probably KLNQ but knocked out by KDRG s/on @ 5:59. KHWI-1440 T-40 6:09-6:16. UNID f/c on 1150 during KCOT sked. XEP-1420 s/on 7:02 in a pile. KLNK-1440 copied for another report @ 6 s/on, unverified from 1954 WJ report. 12/25- WRBC-1300 NIS 7:12-7:30. That evening, KALO-1250 u/WREN et al, RAB, 10pm. 12/27, no sign of WHHO-TEST through XET/WNOX/KTHM. KTTX noted briefly on 1400 near 3, ditto KNOX-1490, neither enough to report. XEJJO-1490 "R. Sensacion" up top 3:18-3:27, AN? KPOL-1540 copied verbatim @ 3 s/off. KKKO-1450's TEST pretty fair through (needed) WLAY/KAYC et al. Best of all, KTHM-1400, Tucumari, NM absolutely "cleaning" the frequency on their quarterly r/c; note to a Fels named Joe, on one hour LATER than in check list (or as listed in previous year's list). Said they were testing with Lee's Summit, MO. It reminded me of the story of a listener calling into WHEW back in the 50's saying he'd heard 'em all the way to Tucumari; our Croton NY DX Club member then called WHEW and said "That's nuthin' - we've heard Tucumari up here on 250 watts! (KTHM) 12/29- WCIL-1020 squeaking between KDKA/KBCQ @ 8am. I visited KEEG-1560, a very friendly station. They will notify me on upcoming annual PoP test; they also invited me to attend East Texas Broadcasters Assn. meeting which sound interesting! KYAL-1600 still is on old call as of 12/29. I forgot to mention hearing Callahan's WMTX-940 on 12/27 3:45-4, tough copy! 73.

DON'T FORGET TO HOLD OPEN THAT GLORIOUS WEEKEND OF LABOR DAY '77, FOR THE NEXT BIG N.R.C. CONVENTION, THIS TIME IN LINCOLN, NEBRASKA. EVERYBODY IS INVITED, OF COURSE, AND THE MORE WHO COME, THE BETTER IT WILL BE FOR ALL!

On Feb. 5, 1955, a new abbreviation was added to the NRC - "AN," meaning any station running all-night whether regular or not! Croton's Ken Maylath felt that "DXers would do what they've been doing for years, dig & try harder" to DX through ANers. One John Sampson called graveyard ANers "an unnecessary evil"! Massachusetts' Stan Morss said KGFJ was the very first ANer: 1928! In the stations' attitude department: Fred Anderson said KTTR, Rolla, kept all DX reports in an album in the studio & KLCN kept a map with pins detailing where they were heard! Croton DX Club reported that WATN returned their stamp and said they considered it a privilege to have DXers write to them! Pennsylvania's Herb Campbell complained that his 91.9% return rate was slightly down. Speaking of veries, Pennsy's Charley Conley got one from (honest) HOG, in Panama! As to what was being heard those days: Len Kruse (Iowa) heard ALL FOUR DX TESTS 1/2/56: KGOS-1490, Wyo.; WHCO-1230 Ill. & KRXX-1230 Idaho; & WCEN-1240 Md., graveyards all. North Carolina's Relfe Luton listed 4BK & 2MW among his recent veries. Jamestown, NY's Pat Reilley heard successively one February MM on his 'cellar antenna': On 1340, KAPA, Raymond, Wash., XEAA, Mexicali, Baja Cal., until KSPQ, Spokane overrode them both! Omaha's Don Kaskey reported WAIR N.C., & KSFE, Needles, Cal. "trying to outdo each other at 5:21am on 1340! Ben Patch of Winnetka, Ill. got his 49th state, WIKI-1490, Vt. We used to chuckle at a Philadelphia DXer's one-line reports that all read about the same: "Heard WOR-710, came in R-9!" Stations used to put on annual March of Dimes broadcasts and Indiana's Don Roller noted KGKL, WANE & KYOS all running them one morning. New Zealand's Ken Mackey heard 14 CPC-arranged DX TESTs one year! Speaking of the CPC, KDLM-1360 got 70 reports per Sid Rosenbaum on their TEST! Among the top contestants in the '53 Domestic DX Contest & Consecutive Call Contests were: Bob Gorsuch, Gene Cameron, Bernie Duffy, Ev Johnson, & Frank Wheeler. Among the more frequent Musers of the day were Floridians John Pohl & C.C. Smith; Oklahomans Bus Boatman & Hank Ward; Pennsylvanians Ted Weiser, Joe Brauner, & Warren Routzahn. Barry Foote occasionally reported but Roger Legge didn't! And demonstrative of the spirit of the NRC, Connecticut's Hal Williams asked for a Spanish report translation and got 23 replies from members! Vermont's Hank Tyndall, who had over 5,000 veries (later on), complimented the CPC in reference to hearing the DX TEST from CB-73 in Chile that "in the good old days the stations were much easier induced to do DX TESTs!" 73 from the 50's!

NEXT WEEK, WE'LL HEAR SOME MORE OF THE LATE CARROLL SETH'S POETRY, THEN WE'LL TURN THIS COLUMN OVER FOR TWO OR THREE ISSUES TO BEN DANGERFIELD, WHO'LL BE TELLING US ABOUT EARLY PHILADELPHIA RADIO.

JAMES E. CRITCHETT - 1635 Walbridge Street - Red Bluff, CA - 96080

My total number of station identified since moving to Red Bluff stands at 340 as of 1/3/77. KEX-1190 is off from 5 to 9am EST Sundays, & KAYQ, Kansas City, MO is the farthest heard on that frequency, @ 5:25 12/19. WQXR-1560 was my first N.Y.C. station, @ 6:08, 12/20. KIKI-830 my first Hawaiian, 5:08am, 12/21, w/WCCO. WCBS-880 second NYC station, 4:27am, 12/25. WBZ-1030 farthese E @ 5:20am MM 12/27 (no KTWQ). KTNQ-1020 IDed 12/28 @ 4:59am, ex-KGBS, ex-KPWD. WNBC-660 third NYC station, heard @ 3:30 12/31. MM 1/3 gave me nine new stations. KGAR-1550 Vancouver, Wash. was on from 3:11 at least, when I first tuned to 1550, to 3:51. KRGO, of course was there, but was nulled mostly. KOQT, Bellingham, WA came on at 3:30 for TEST & I stayed with them to 4:00. I finally heard CPAX-1070 ID u/KNX at end of NX, 4:05. XEMO-860, seems to be leaving a TT on AN, so I was surprised to hear R. Clarin ID through them @ 4:32. KWHO, Salt Lake City, came on late at 4L4 for their TEST. They used code @ 4:54 also, after mx. KFRE-940 was off, so CJIB was IDed @ 5:29. KTOM-1380 was off, so KRKO IDed @ 6:01. KENO-1460 (finally) ID through KDON's null @ 6:16. Last was KLOU-1580, weakly, @ 6:22, with KDAY off. I slept till 11:45! My first report sent in many months, to KOQT, this morning. KWHO has been verified, previously. Happy New Year and many veries to all!

ERNEST R. COOPER - 5 Anthony Street - Provincetown, MA - 12657

Nary a verie, how contrary! So, we'll get into the DXings. 12/25, continued, unnn CKEM-1490 was AN in FF, of course, and dominated the frequency, no other FFCs were audible this year on 1490. PM, WTGR-1520 logged u/WKBW 4:59-5:15pm s/off, they're rr like WKBW. SM 12/26- FFCs were doing right smart, like CJVL-1360 @ 1:44, & CKRB-1460 @ 1:46. Back to 1490 & an FFC holding forth there w/much French-Canadian fiddle tunes & off @ 2:02 w/Oh Canada, anybody know which one 'twas? Then w/TA signals real good, I heard a band concert on 1546 w/British announcer, but the voice modulation was way down & I didn't find out which English station it was, anybody else fare better than I? This, with WPTR on OC, 1540. They had a children's story seemingly at 2:52, one (only) time pip @ 3am, then NX, and then they died. From the NNRC bulletin I caught a one-liner you might be interested in - Sam Barto has 9,000 veries - I believe he's the former NRer, Bud Barto, of Connecticut. This includes SW & BCB. MM 12/27- Weak NX in EE @ 1:01 an 1457, unID. UnID TTer on 1470 1:10-1:15, then OC - two letters in Morse code heard, "KT." A TTer on 1000 1:30 & on, unID, seemed S of here. Unnn WHOO-990 TT/OC & occasional IDs much of the morning o/WNOX; no WNNO here either, WIBG was also testing. 12/28- Well, we finally did it - got enough on Turkey-1016 for first report in 44 years of DXing to an Asian! 4:35-4:45pm they had an absolutely fantastic booming signal - armchair, as some of you call it. 12/28- 12:58am s/off on 1115 kc/s., seemed to be the Dominican Republic's NA, very weak signal. Unnn WQQW-1590 ET-rr 1:35 & on. 12/29- WCKY-1530 was on OC only today, as they were also on 12/31. Unns WCRV-1580 heard @ 3:47pm, & WTBE-1520 s/off 4:46, 16 minutes late, no? 12/31- WFGI-960 seems to have quit ANing & Herbie, heard s/off @ 2:01 w/SSB, SM 1/2- Unnn WBEX-1380 & WTVL-1490 w/Bruins hockey on the WX till 1:30 or so. At 2am, WPTR said they were signing off for three hours of maintenance & would be back at 6:30am! (that doesn't add up right!) Today on 1546, four short & one long TX pip into 2am, but naught else. Unn but seldom heard WIRY-NY topping 1340 @ 2:30. A Colombian o/u the Cuban Minute Man on 1180, but unID. Don't forget my GTG here on Saturday, April 2, 11am-6pm. GUN7.

ANSWERS TO N.R.C. Word Interference

1st Word: M U S I N G S

2nd Word: H A M M A R L U N D

3rd Word: L O U I S V I L L E

4th Word: B E V E R A G E

5th Word: S T A T I O N S

Answer to "What Most Domestic DXers Want"

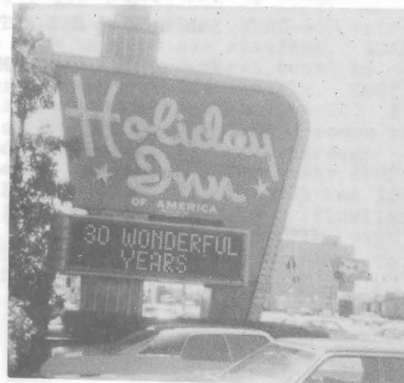
H E A R A L L S T A T E S

More To Come, See Future Issues of DXN.



Photos by Karl Jeter & Ray Arruda

Counterclockwise, starting above:
1. Skip Dabelstein, Neil Zank, Rob Keeney,
& John Callaman. 2. Commissioner Robert
E. Lee & RJE. 3. Frnie Cooper & Frank
Bailey. 4 & 5. Self-explanatory, hi.



		V E R I E S I G N E R S					
A - A. Imprescia	B - S. Shedd	1260	K F G Q	Rev. R. Woolsey,	CE N		
C - J. Ross	D - J. Cohen	1280	E J J D	B Dingwall,	CE F		
E - E. Wesclowski	F - W. Coleman	1290	K R G V	T Perryman,	CE K		
G - E. Straus	H - B. Reynolds		W N I L	G Ewald	K		
I - K. Rychalsky	J - W. Heinen		WqH GmR	N Pike	Q		
K - C. Dabelstein	L - J. Falconer	1300	W K C Y	O Voigt	F		
M - F. Wheeler	N - L. Buehler	1310	K FfL A	C Van Horn,	CE J		
O - J. Kay	P - R. Schiller		W C A M	J A Heal,	TD G		
Q - M. Foltz	R - K. Jeter	1320	W KqA P	C E Laikar,	CE O		
	S - E. Cooper	1330	W H O T	J Bøyd,	NRC, E O		
540	W YmN N	J N Maurer, P,	GM S	W F T P	J Morton,	OpD A	
560	K W T O	M Chaney,	CE P	W O C K	S J Popp,	CE G	
570	C FuC B	R Humber	S	W I f Z	E R L Gaier,	CE Q	
580	K A L B	R Richardson, E	P	1350	K I f D	N A Mejia,	CE J
550	K CuR S	P M Humes, M	P	1360	W I X Z	R Yankes,	E O
590	K BuH S	D Johnson, CE	P	1370	W S A Y	G P Brown,	GM O
600	K TuB B	D Changy, GM,	PtnrP		W S P D	M B Ruppert	D
	K OqG O	R W Evans, CE	J	1380	W T V R	M Friend, P.R.	Dir D
620	W D N C	B Hayes, CE	F	1390	W R I V	F Brinka, Nx	D G
640	C B N	F Holm	G		K K O A	W Fink, PD	J
680	C F T R	R Turpenney	VPOEG	1400	C JmF P	Chantal Gagnon	Q
	K FqE Q	D E Moss, Cop	P		K P A G	G Tautges	K
710	W HqB	G Nonsmaker, Su	P		K A My S	K A Giebler,	CE H
750	W H E B	A Vaccaro, CE	I	1410	W I c N	J Yancey,	VPOE D
800	K Q C V	C Singer, GM	P		K C O L	W Huett, PD	H
850	K G K O	M Wilkini, A	E		K E R N	J Barcroft,	CE J
910	W O K K	R Wall, CE	E	1440	C FcG O	H F McRae,	CE D
	K I K M	B R Samford	E	1450	W C T C	C Dingman,	CE D
920	C F R Y	J Moody	E		W I L M	E B Boylan,	CE D
	C K N X	S C Reid, D, Brdg	G	1460	W AcX C	F Scheidt,	ESu D
930	W S E V	A T Nenderson,	CE E	1470	W ScA N	R H Musselin	D
	X E Y J	Dr. W.N. Saade	MC, E K		W O c H	O G Sharpe,	CE E
940	W E C O	C Stump	S		C F O X	Carroll Chalmers	I
960	K L A D	K Hunt	MF	1480	W T L O	J J Johnson,	PD K
970	W W S W	P R Chimes, D,	TOpD		W I O S	R A Van Buhler,	CE Q
	W C S H	H W Crosby, GM	G	1490	K Q T Y	Karen Little	H
1000	W S U M	D S Johnson, TD	C		W G C H	G C Stevens, P,	GM I
	W K B Q	Buck Poe, OpM	G		W T U P,	J Mack, PD	R
1010	K X E N	B Harville	JrgMP		W SpY L	R Johnson, PD	R
	K KpI K	u/u, CE	P	1500	W D E E	C B Roberts,	ESu I
1020	K BfC Q	T Rose, CE	P	1510	C K O T	R Lamers, E	G
1060	K H Y M	R McClure, M	P		W L A C	E Lawson, CE	D
1070	W F L I	J Poteet, E	I	1530	K PmC R	J P Salois, CE	S
1090	X E PqR S	"Mngmt & Eng. Stf"	P	1550	W N T N	R Wolf, CE	D
1110	WfZ AmM	J Heimer, CE	S		W Y O U	W Polk, CE	F
	W VmN H	M Fernandes, SM	S		W C T W	R Shults, CE	G
1120	K C L E	J Fletcher, GM	P		W C G R	G Kimble, VP	O
1150	K S E N	B VanHeel, CE	B		W P T N	C Slezak, ACE	K
1170	W L B H	S E Mkiller, CE	L	1560	W ApF I	u/u, E	R
	W W V A	u/u	O		W CpN W	D Estell, CE	R
1190	W K O X	F Stiles, NRC	O		W T A I	T Hanssen, P	D
	C HfT N	J R Bentley, CE	M	1570	W T O W	S L Fischel, Coml	M D
	K O K K	B Nelson, PD	E		W T C L	C Butten, XE	O
1210	K GpY N	Morine Rayburn, S	P	1580	K N I X	C Reno, CE(ex-NRC)	K
1220	K ZuY M	D Zimmer, GM	P		W A M W	J Edwards, GM	N
1230	K L W T	J A Sellers	H		W P G C	J Nunemaker, CE	D
	W CqL O	T Carpenter, CE	L	1590	W A T M	D Gehman, CE	D
	K C O N	W Johnson	N		W Q Q W	J Ramsey, ACE	IO
1240	W W C O	G Healy, CE	D	1600	K ArT Z.	C B King, CE	O
	W GmB B	A C Lush, CE	D		W X V I	M Webster	A
	K W O S	W R Natsch Jr, GM	H		W J N J	W Bivens, GM	F
1260	K D U Z	D Gander, CE	K				
	W IqX Y	u/u	Q				
	W P H B	D Sharpless, CE	MN				

c - Typed card p - prepared card
q - printed card u - from followup
r - Verie on reportm - coverage map