

dx news



the magazine of the National Radio Club

VOLUME 43

5 JANUARY 1976

NUMBER 11

“Completing my first year of DX NEWS was quite a thrill. Now I'm back again sending in my dues to buy a **Dx'ers Guide to Reality**” (Mike Ramirez-TX)

ON THE INSIDE.....

- Build Your Own Audio Filter - Phil Sullivan
- LA Split List Updater - Ron Schatz
- 1230 Log Updater - Dave Lewis
- Foreign DX Achievements - Norm Maguire
- DX'ing In the Far East - Pete Taylor
- Clippings, etc. - Various

NEW MEMBERS

- * Craig Healy, Box 182, Cumberland, RI 02864
- * David J. Sullivan, 47 Knollwood Rd., No. Haven, CT 06518 (WN1TNS)
- * Harry A. Schools, 1606 So. Newkirk St., Philadelphia, PA 19145
- * Brent Taylor, 61 Warren Ave., Riverview, N.B., CANADA E1B 3R8
- * Gary Houdek, RR, Munden, KS 66959
- * Richard K. Briggs, 31 Lowell St., Ashville, NC 28803 (re-joins)
- * James B. Pesek, Rt. 1, Box 510, Cary, IL 60013
- * Robert A. Lazar, 1109 Niesen Rd., Pt. Washington, WI 53074

RENEWALS

J. Herkimer, M. Scheel, P. Crabill, J. Pejza, H. Morgan, J. Silliman, M. Bredvold, S. Rubin, R. Dickter, C. Conner, H. Weeden, H. Helms, G. Bertonz, L. Gagnon, F. Wheeler, C. Freeman, J. Mikuckis, J. Ridge, J. Hupke, L. MacGill, J. Gudgel, J. Roberts, J. Mockus, R. Truax, W. Brown, A. Retzlaff, J. Radovich, R. Van Wormer, B. Winkelman, R. Arruda, E. Crusier.

FLASH TIPS & SUCHLIKE

12/15; KLUC-1140 Hrd by Wolff, Hansch, Boyd, Forth, Wayne Murphy w/ FM simulcast rr. Not hrd by FED, RjM. WKTJ-1380 hrd by RjM, FED, Murphy. Tentative by Hansch w/TT. Not hrd: Forth. WRAM-1330 hrd by FED o/u WFTP, Hansch, Forth (U/KFM), Murphy. WWSN-1240 hrd by RjM, Hansch, Forth, Murphy (u/local WINN). Not hrd by FED due to WGBB. KXRB-1000 hrd by HWB, Hansch, Wolff, Murphy, Forth (w/ WCFL off ET 0309-24 per his request). Not hrd: RjM, FED. WDLM-960 hrd by Hansch, Forth, Murphy. Not hrd by FED. WKLF-980 hrd by Murphy. Tent. w/TTs, poss. IDs by Hansch. Not hrd: Forth, FED. 12/22; WENN-1320 Tent ID 0400 w/FM ment. by Hansch. Not hrd: RjM. WCCP-1560 hrd loud w/calls by Hansch. 12/24; WASR-1420 hrd 0006-11 by RjM w/ Code IDs, TT, lengthy ID at end. He asked that they use this tape on r/c. OTHER: WHLI-1100 is off the air due to excessive vandalism. An employee has been arrested for same per Foxworth, Galerstein clips. WALL-1340 is off indefinitely due to a major fire per Galerstein. WOPI-1490 is AN-Nitecap contrary to previous report. Format is c&w w/ occ. Gospel normally and also Jepko's off-nite. Stn. silent MM to 0500. Regular 0500 nx weeknites is NBC then returns to Jepko. (Todd Hyder) A new station will be on soon in Barrow, AK on 680. Will be all Eskimo pmg, non-profit, temporarily 1 kw. Plans for 10kw/5kw NDA by 6/1/76. Calls not known by Bob Hlivak who tipped us, but he will check. Info/veries from Jim Dillon, c/o Silakkuagvik Comms., Inc. Box 546, Barrow 99723

C. P. C. TEST SCHEDULE

MONDAY	JAN.	05	- 0330-0400	* WDSL-1520	- Mocksville, NC	5000	D	NRC
			- 0100-	* WMLO-1570	- Beverly, MA	500	D	NRC
			- 0230-0300	* KIMB-1260	- Kimball, NE	5000	D	NRC
MONDAY		12	- 0300-0500	* WVOY-1270	- Charlevoix, MI	5000	D	NRC
			- 0300-0330	* KKYN-1090	- Plainview, TX	1000	D	NRC
			- 0230-0300	* KNIC-1550	- Winfield, KS	250	D	NRC
MONDAY		19	- 0100-0200	* WBSM-1420	- New Bedford, MA	5000	U	NNRC
			- 0300-0330	* WSUB- 980	- Groton, CT	1000	D	IRCA
			- 0300-0330	* WTBJ-1090	- Monticello, FL	1000	D	NRC
			- 0330-0400	* KACO-1090	- Belleville, TX	250	D	NRC
			- 0000-0200	* WRBJ-1580	- St. John's, MI	1000	D	IRCA
MONDAY		26	- 0300-0330	* WQBX- 710	- Blacksburg, VA	5000	D	NRC
			- 0330-0400	* WJJJ-1260	- Christiansburg, VA	1k	D	NRC
			- 0300-0330	* WRIB-1220	- Providence, RI	1000	D	NRC
			- 0300-0400	* CJRW-1240	- Sunnyside, P.E.I.	250	U	NRC
MONDAY	FEB.	02	- 0300-0330	* KSOA-1430	- Ava, MO	500	D	NRC
MONDAY	FEB.	09	- 0200-0300	* WBRW-1170	- Somerville, NJ	500	D	NNRC
			- 0300-0330	* KPSO-1260	- Palfurnas, TX	500	D	NRC

DETAILS:

WDSL - C&W mx, TT, 1kW first and last 5 min. 5kW middle 20 min. V/s Jack Scott, Box 404, 27028. Arr.: Skip Dabelstein.

WMLO - No program details. V/s Ernest W. Horne, CE; Box 344, 01915. Arr.: Ron Mosque.

KIMB - Poss. TT & march mx. V/s Joan Wood, Mgr.; Box 1006, 69145. Arr.: Neil Zank.

WVOY - No program details. V/s Terry Edger, 211 Bridge St., 49720. Arr.: Dabelstein.

KKYN - No program details. V/s Bill Bruder, Nx Dir.; Box 147, 79072. Arr.: Dabelstein.

KNIC - Poss. mx & 1kHz TT. V/s Gene Courtney, Suite 300, First Nat'l Bank Bldg., 67156. Arr.: Zank.

NOTES & FROM NJPC

From November's CQ Magazine via Tom Bull comes word that Hammarlund has some unused, retested receivers available. They listed HQ-180A, SP-600-JX21, SP-600-VLF and R390A-URR. Don't know if there are any left now, but enquiries were to be directed to Hammarlund Mfg. Co., 20 Bridge St., Red Bank, NJ 07701.

From Dave Bennett comes word of some new NWT stations funded by the NWT Dept. of Information and listed in their 1973 Annual Report. Only data is what's listed below:

Broughton Island (due No. of Pangnirtung on Baffin Isld.)
Coppermine (on the western end of Coronation Gulf)
Fort Franklin (western end of Great Bear Lake)
Fort Simpson (on the McKenzie R., near the Pelly R. jctn.)
Sanikiluaq (no idea where it is, hi)

Anyone have further info ????

Congrats to member Jim Critchett on the occasion of his recent wedding. The ceremony was conducted by another member, Calrence Freeman, who is a United Methodist minister.

international dx digest

editor: Alan Merriman
P.O. Box 8
Fairfax, VA. 22030

* Phone 703-354-2135 Before 2200 ELT * All Times Are GMT * Deadlines Are Friday *

Greetings. After a week of rest, back to the grind. A new typewriter in use here - an electric, and since this is the first time I've tried to do this thing on an electric typewriter it should be interesting. Should make for a better looking column once I get used to it. Here we go

EDITORIAL COMMENT: In the 12/15/75 issue of DXN there was an article titled "World Radio Allocations". In this article the author put forth some proposals which he suggests NRC support. These ridiculous proposals have absolutely no merit, and deserve no support - not from the NRC or any individual DXer. In fact, I wonder why the NRC even ran this article to begin with. If all areas of the world were to adopt a standard 10 khz spacing, this would be fine from a technical standpoint - but it would also effectively kill much of the International segment of our hobby. In fact, many International DXers in the Eastern part of North America are looking forward very much to the day when the Pacific/Asian area adopts 9 khz spacing. The author also suggests that the MW band be extended to 2 mhz. If this were done, the 160 meter band would be taken from the hams. Why support a proposal that would cut the throat of one of our fellow radio hobby groups - in fact the only hobby group that's likely to have any influence whatsoever at the Radio Allocations Conference. Neither of these proposals deserve any support, and I personally feel that it's too bad that the NRC appears to support them by printing this article. ~~MY OPINIONS WERE AND STILL ARE SOLICITED ON THE SUBJECT. WE WILL RUN ALL SUCH OPINIONS WITHIN REASON. WE DO NOT SUPPORT ANY OF THEM - RJE~~

CHANNEL ISLANDS It should be known by the end of 1975 if these islands will have their own MW frequency. The matter is now being dealt with on "An International Basis". (Patrick, MWC)

COLOMBIA A new station is HJPO Radio Majagual on 1430 khz with transmitter in Corozal and studios in Sincelejo. Power is 10 kw and they went on the air on 8/11/75. Adr is Edificio Turbay or Apartado Aereo 542, Sincelejo. (Nensen)

DAHOMAY The new name for this country is the People's Republic of Benin effective November 30. (NZRDXL)

INTERNATIONAL WATERS Radio Caroline/Mi Amigo on 1187 khz was off a few weeks in Nov. after having trouble with the British Authorities as they had to go ashore during a storm. Evidently they got back their equipment as they now can be heard again. S/off is 2400. (Nensen)

ISRAEL There is a new station at Jerusalem on 529 khz with 100 kw. (MWC)

MOROCCO Rabat on 818 khz is now 25 kw according to the EBU. (Nensen)

PORTUGAL Radio Clube Portuguese closed its 100 kw transmitter on 1034 khz at 2107 on 11/25/75 after a unit of the Armed Forces had threatened to destroy it if it remained on the air. Government EN Lisbon studios are closed and EN broadcasts originate in Oporto. All commercial stations link with Government stations for news bulletins. (Sennitt, MWC) * All Portuguese stations were nationalized on 12/3 with the exception of Radio Renascenca which was blown up a month or two ago. (Nensen)

SAUDI ARABIA New station at Muzia on 702 khz with 50 kw. (MWC)

SURINAM There is supposedly a new station that may or may not be on the air yet, Radio ABC on 1030 khz, possible s/off at 0430. Address is Schnerders Howardstraat. Paramaribo. (MWC)

Now, on to what's been heard

520 -WEST GERMANY Hannover, 23 db at 2350 on 12/20. Mx in slow dance tempo, followed by GG announcements. Best ever; power increase? (Bailey) First report of this one that I can remember, I've looked for him before but never had any luck. (ED)

- 04
335 -GRENADA Radio Grenada in vly well w/ talk, 2348, 12/12. (Connelly)
340 -MEXICO XEWA San Luis Potosi, SLP 12/11 0330 w/same power as XEX-730; S9+. Had piano mx and a horrible singer. (Lobel) Fantastic catch - must be new for you.
- 552.5 -COSTA RICA (?) Would imagine this is TISEJ drifting around again. Hrd 0315 on 12/1 w/soft SS mx, slop from 550. (Falconer)
555 -ST KITTS ZIZ strong as usual w/Big Band mx. 0300 12/1. (Falconer)
580 -PUERTO RICO WKAQ o/u WTAG, w/WKAQ mas Musica SID. First reception in Sudbury; this is the normal dominant at my W. Yarmouth, Mass. listening post. At 0313, on 12/3. (Connelly)
- 640 -FIJI (Tentative) Lautoka, 11/24, band mx 1106, then first bars of GSQ, off by 1109. Fiji about the only thing possible here, this during KFI SP. (Vernon)
-VENEZUELA YVQO Ondas Portenas, Puerto la Cruz 0900 TC, ID vly good 12/15. (Straus)
-UNID S8er noted u/CMW, s/off 0500. The male anc finishes by 0500 then children sign what appears to be an anthem for 3 or 4 minutes. Have noted it several times on weekdays, never on the week end. (Brown)
- 645 -PARAGUAY R. Caaguazu 0545-0615 previous unid for me many times, hrd well at times with my new SM-2, many mentions of "paraguaya", SS OM tx, SS vocals, 0604 ID as R. Caaguazu, mention of la capital, vly good sig at times, never understandable w/my longwire, but SM-2 helped w/this which is country 47 for me 12/17. (Straus)
- 690 -HAWAII KORL 12/15 solid S7, ID and location at 0800. (Hartlage)
697 -UNID JAMMER in OC came on for 25 seconds, sweeping back and forth between 646 and 648 khz and went off for 10 seconds. This procedure was repeated; first heard around 2120, 12/12, still noted past 2155. (Connelly)
- 690 -MEXICO XETRA 12/6 0100-0115 off and apparently having trouble. Kept switching carrier on and off. Another stn was audible u/KNER slop; pro CMCB. (Lobel)
-DOMINICAN REPUBLIC (Tentative) Per phone call to Merriman. Het on low side of WLW/LAS-700, no audio extractable, 0010, 12/13. 701 het also present at the time. (Connelly)
- 700 -COLOMBIA HJCK Cali o/several other LAs, w/nx about Bogota, 0335, 12/3. (Connelly)
705 -ST VINCENT (Tentative) More than likely this as only thing listed here. In w/female anc in EE and what sounded like religious mx, audio very shallow, at 2335 on 11/26. (Falconer) Another report of this one, sure wish we knew if they were definitely on the air - I might get ambitious enough one of these days to write them and try to find out what they are doing these days. (ED)
- 710 -VENEZUELA YVY Caracas w/IDs mentioning Capital and Caracas, dominating the channel, 0317, 12/3. (Connelly)
715 -HONDURAS ?? HNTV probably this w/bits of mx and SS talks 0230, 11/19. Wasn't // to 6145 mx however. (Falconer)
- 719 -PORTUGAL Norte vly strong, one of the best TAs, w/man in PP doing sports broadcast, 2145, 12/12. (Connelly)
- 730 -DOMINICAN REPUBLIC HIZ Santo Domingo 0935 ID as R. Nacional 12/15. (Straus)
-MEXICO XEX 12/11 0305 in like a local w/mx and ID plus mention of Mexico City. S9+ sig strength; recheck at 0436 showed same S9+. (Lobel) Another biggie! (ED)
- 735 -ECUADOR HCBG1 vly strong w/up tempo mx, fast SS anc between cuts, several Medellia IDs, 0250, 12/2. (Falconer)
- 750 -VENEZUELA R. Caracas hrd w/perfect audio 0720 12/15; US rock and frequent IDs. (Hartlage) *YVKS bombing in o/WSB w/Nights On Broadway by the Bee Gees, R. Caracas ID (man in SS) then "The Night Chicago Died" by Paper Lace, 0503, 12/13. (Connelly) *0525 like a local w/WSB nulled, SS mx and ID. (Straus)
- 764 -SENEGAL Dakar w/strong carrier, weak audio; man in AA w/sing-song talking, het of .2 khz on low side, 2215, 12/12. (Connelly)
- 773 -SPAIN Caceres vly dominant here w/man in SS, then IS and EE rock. New Morocco stn not noted here. At 0005 on 12/13. (Connelly)
- 780 -CUBA CMJN w/mixture of SS and US mx at 0515 totally pulverising WBEM on car radio at Route 27/Sudbury River. Noted w/march mx, then nx in SS at house on R390A, 0530, w/considerably more competition from WBEM, on 12/10. (Connelly)
- 782 -UNID TA Vly potent OC here on numerous occasions; 2128, 12/12; 2355, 12/12; also 0330, 12/9. Either a new superpower station testing, or maybe a change in GSB9 operations due to Portuguese political situation. (Connelly)
- 800 -MEXICO XEROK 12/8 0128 audible w/KEMMM w/rock mx. Spsot for Ray's #2 Drive-in and "X-Rock 80" ID at 0131. (Lobel)
-NETHERLANDS ANTILLES PJB Bonaire 12/8 0813 poor sig w/PP u/slop from 800 test tone. (Lobel)
- 809 -UNID (Yugoslavia or Spain) Semi-operatic vocal, not EE, loud here at 0520, 12/14. Faded to just a het on HJCY at 0540, WGY off. (Connelly)
- 818 -ANDORRA Sud Radio w/potent sig totally o/Morocco/Egypt/HJED/WBAP. Man in FF read list of job openings, some in auto industry; one required 5 years of experience. At 0515, 12/14. (Connelly)
-MOROCCO Rabat dominant w/belly-dance mx way o/distorted 2nd stn audio (from being slightly off freq), 0540, 12/14. (Connelly)
- 825 -PANAMA R. Peninsula well o/Titania, producing low het. Man in rapid SS w/mentions of Panama, (Titania had Carpenters record), accordion mx was followed by fanfare and clear R. Peninsula ID. From 0530 to 0540 on 12/13. New country. -UNID TA Potent OC dropped off at 0000, 12/13. (Connelly, last 2)
- 834 -BELIZE Much stronger than 830 and 840 w/US C&W mx by Linda Ronstadt, 0337 on 12/13. (Connelly)
- 840 -PANAMA Absence of local WHAS (6 miles away) produced R. Libertad 12/15 0734-0759 when full ID was heard. (Hartlage)
- 844 -GILBERT ISLANDS Tarawa. Carrier detectable here w/HFO 0815, 11/24, too low for any audio though. Will watch this. (Falconer) * Strongly suspect Gilbert Is. here 12/15 0908-0912. Apparent ID hrd 12/13 including bird sounds. Vly poor a audio, direction right for Tarawa. Will keep trying (if WHAS is ever off again)
- 845 -ITALY Rome fair to good w/Muzak, 0543, 12/14. (Connelly) // (Hartlage)
850 -MEXICO XEZF 12/8 0139 probably this one heard u/KOA null w/mucho slop from XEMO. Insufficient for report to stn due to XEMO slop. (Lobel)
- 860 -MEXICO XEDJ Durango, Dgo., 12/13 1302 w/NA, several call IDs, Power, etc. before XEMO on. First Durango stn for me. (Seaver)
-PANAMA Chitre, "Radio Reforma" heard fair 11/28 1015 tune-in, mention of Panama, "R. Reforma de la noche" ID. (Seaver)
- 870.1 -CUBA (Tentative) Likely the source of ripping het on WWL, 0518, 12/13. (Connelly)
- 900 -MEXICO XEW 12/11 0341 probable one heard here u/slop of local KDEO-910. Thought I hrd mention of Mexico City. (Lobel)
- 935 -MOROCCO Agadir fair to good w/vocal mx followed by man in AA addressing crowd at low audio level, bad CBM cl mx splatter, 0530, 12/13. (Connelly)
- 940 -COLOMBIA R. Eco, Cali in like a grant for a couple of minutes w/R. Eco ID at 0630, SS mx, time, 12/17. (Straus)
- 950 -MEXICO Talk about noise plus slop! You should have heard this one on 12/8 at 0145. Audio quality sounded like they were using a cat whisker for a xtr and a piece of tin foil for a mike. A little better at 0148; but not much! Slop was from 935 to 970. Also audible on 990 and 1030. (Lobel) // (Seaver)
- 975 -UNID LA Andean-type mx 12/8 1025-1033, some talk, no ID hrd. Probably Ecuador.
990 -MEXICO XEGL 12/11 0353 heard w/"X E C L Radio Rama" ID; Mexigann log has "Radio Mundo". (Lobel) // (Hanavan)
- 1005 -COLOMBIA HJDP Neiva, Radio Colosal ID at 0645 on 12/12. Many mentions of Colosal afterwards. Good level (S7). KOMO and XEDX slop a slight problem. New.
- 1010.4 -UNIDLA Hetting WINS at 0325 on 12/3. (Connelly)
- 1025.5 -COLOMBIA Ibague, "Ecos del Combeima" weak 12/8 at 1011 w/good ID. (Seaver)
-SPAIN (Tentative) Likely San Sebastian here w/male SS anc, female vocal during good TA ex, 0552, 12/14. (Connelly)
-UNID LA S8er here at 0637 on 12/12. Believe there is a Panama stn here. IRCA log says David, Panama, La Voz del Baru. I hrd possible mentions of La Voz and David (pronounced Dah-Beed); but nothing sure. (Hanavan)
- 1030 -COLOMBIA In well w/mentions of RGN and Carousel; WBZ off. 0550 12/14. (Connelly)
- 1032V -COLOMBIA Cali, "R. Pacifico" seperable from 1030 12/9 0418 w/IDs. Lots of drum music. (Seaver)
- 1034 -PORTUGAL (Tentative) Interspersed mx and talk (sounded FP). Poor/fair, WBZ off, 0642, 12/14. (Connelly) * See item in 1030 changes.... Rje - Maybe back....
- 1040 -CHINA Okay, JJ not CC; the two sound alike to me. Note Seaver! (Lobel)
- 1059.1 -CUBA Way o/CJRP/KYW at crushing level, SS talk and mx, 0425, 12/13. (Connelly)
- 1085 -HONDURAS (Tentative) R. Awropuerto the one here per RFS list, noted w/slow mx, then SS talk, poor to fair, 0550, 12/13. (Connelly)
- 1088 -ENGLAND BBC Growborough. Fair level, man talking, 0310, 12/9. (Connelly)
- 1106 -WEST GERMANY AFN Munich strong and in the clear w/sports in ES, male anc. Item about upcoming Olympic Games in Montreal noted; 2nd stn way u/w/mx, zero beat, 0627, 12/14. (Connelly)
- 1115 -ITALY Fair to good w/man and woman in II alternating, 2 or 3 notes of tinkly mx occasionally interspersed, 0629, 12/14. (Connelly)
- 1120.5 -UNID LA SS mx at fair level, whipping severe het on KMOX, 0421, 12/13. A het also noted on 1119.8 khz. (Connelly)
- 1165 -ANTIGUA Strong here most evs w/rel pems. Strong 11/26 at 0100. (Falconer)

- 1174.8-UNID Strong LA here noted several nights, no ID noted yet. Likely the TI or IS slightly off freq. Last noted 11/27 0300. (Falconer)
- 1175 -EL SALVADOR 12/9 good sig, La Vos del Pacifico ID at 0145. (Hartlage)
- 1187 -INTERNATIONAL MATTERS R. Caroline/Wi Amigo poor to fair, w/fast talk ancr, jingles; considerable domestic alop, 0622, 12/14. (Connolly)
- 1188 -GUATEMALA (Tentative) Per HPS list. Male SS vocal w/guitar accompaniment, good level, 0407, 12/13. (Connolly)
- 1196 -WEST GERMANY VOA Munich v/strong, 89 +20 w/ES nx 1 cluding report from on the scene correspondent covering fighting in Lebano. SAH noticeable during fades, 0621, 12/14. (Connolly)
- 1200 -VENEZUELA YVOZ Caracas, R. Tiempo 12/15 at 0710 w/I SS talk, mx. (Hartlage)
- 1205 -FRANCE Bordeaux likely the one here at good carrier level w/weak modulation male ancr, 0631, 12/14. (Connolly)
- 1214 -GREAT BRITAIN BHV ULTRALONG, 89 +40, totally dominant - no Albania. mentioning Radio 2 was followed by time pipe at 0700; then folk mx by Maddy Prior and Steeleye Span including part of the hymn "Gaudete". Anor (man) wished all a good morning, then played "Evil Woman" at 0705. Sig at strongest level (-WCAU) at 0714 during Dave Clark 5 oldie, thundering in w/so QM in 8 khs selectivity position. Anor mentioned it was Dave Clark's Birthday. Still good past 0815, 12/14. (Connolly)
- 1223 -UNID TA Apparent OC w/weak male talk in FF. Talk could have been low modulation of that carrier as no SAH noted, 0638, 12/14. (Connolly)
- 1268 -WEST GERMANY Neusunster fair, man in GG, 0633, 12/14. (Connolly)
- 1277 -UNID TA One stn atop jumble of others. Dominant had man/woman ancr duo; audio too muffled to determine much else, 0634, 12/14. (Connolly)
- 1289.6-UNID Strong het on 1290 at 0345 on 12/13. (Connolly)
- 1325 -NETHERLANDS ANTILLES (Tentative) Aruba, man in SS w/reverb, fair to good at 2235 on 12/12. (Connolly)
- 1375 -ST PIERRE & MIQUELON Strong w/Duane Eddy type 50's guitar inst, 2308, 12/12.
- 1376 -RUSSIA Khabarovsk, probably this hrd 12/8 1127-1133 w/what sounded like MR, no break or IS on half-hour, sked in city jgs at this time. (Seaver)
- 1394 -ALBANIA W/woman in SS, fair to good, 2305, 12/12. (Connolly)
- 1408.7-UNID Strong het on WPOP, audio not noted - it seemed to be an OC. Hrd 0415, 12/12; also 2338, 12/12 and 0352, 12/13. (Connolly)
- 1418 -MEXICO KET? 12/11 0413 "Radio Instructo" ID hrd at 0427. No other IDs hrd. Ideas anyone? As certain of 1410 khs as this was in KEEN null. (Lobel)
- 1421 -WEST GERMANY Saarbrucken. Man in GG speaking in low someone as if trying not to wake someone up (the engineer?), song then sounded, followed by female group vocal, 0608, 12/14. (Connolly)
- 1435 -NETHERLANDS ANTILLES R. Kelkboos, Aruba fair w/mx which had constant loud drum beats, some OFGO alop, 2259, 12/12. (Connolly)
- 1439 -LUXEMBOURG Strong w/GG ancr, phone calls, jingles, and mx which was mix of disco-rock and GG MoR; 0605, 12/14. (Connolly)
- 1466 -MONACO V/very up-tempo DJ show in a romance language. Frequent talking over records. Monstrous sig as usual; at 0604 on 12/14. (Connolly)* In w/good audio beginning a/on 0440 12/9. (Roberts)
- 1475 -AUSTRIA Vienna in well w/mx or commentary, male ancr; industry and finance seemed to be the subject. At 0603, 12/14. (Connolly)
- SPAIN (Tentative) Man in SS before audience (which occasionally laughed and applauded). Atop growl of low hets during a period of good TA ox; not likely an LA as never hrd during auroral ox, 2341, 12/12. (Connolly)
- 1502 -POLAND Warsaw good w/man in Polish 0636 mixing w/2nd TA (prob Spain) w/lively mx, 12/15. (DeLorenzo) * In well w/piano IS, then full a/on w/sale ancr. Then mx. 0600, 12/14. (Connolly)
- 1505 -ANGUILLA The Valley, fair w/ES listening mx, 0025, 11/12. First time hrd after many tries, has been hrd several times since. Could have increased power.
- 1511 -UNID (Likely E. Germany) Potent het on CJRS/WKKE, could not pull audio, 2342, 12/12. (Connolly)
- 1529 -VATICAN State Vatican City xmt at a/on 12/15; celeste IS 0626-28, bells 0629, Latin singing, ID by man in II 0630, organ mx then mass, v/ clear. (DeLorenzo)
- 1546 -UKRAINE Yinnita listed, R. Moscow PS logged here from 2202-2235 12/4. Interesting cx as other TAs were poor at this time. I've only logged this one during strange cx, is the onset of a geomagnetic disturbance. Why would a relatively high latitude path signal be enhanced at a time like this rather than be knocked out? Moscow PS IS taped clearly at 2230. (Eckman) *As of 2200 (cont.)

- 1546 -UKRAINE (Cont) 12/5 I heard the USSR Foreign Service IS here. The place of origin is unknown, but I presume it was somewhere in European Russia since the sig was 56 db, steady and W. (Bailey) Yinnita may well still be here - someone sure is. Last info I saw had Yinnita moving to 935, but have seen no up to date Russian listings in a new time. Maybe new WRTM will help, but I doubt it. (ED) ~~4W 4C: 1414 is frequently the case with the 100 - K-L-F-P~~
- 1554 -FRANCE Nice, V/"El Condor Pasa" type folk/classical flute mx, then man in fast FF. Potent (89 +15), better than 1586 at 0321, 12/9. At potent level, shallow modulation w/man-woman dialogue (apparent dramatic presentation) followed by female vocal of Beatles song "Let It Be", 2345, 12/22 (Connolly) * Best audio this season w/mx, FF talk 0530-0630 12/9. (Roberts)
- 1578 -PORTUGAL Porto. Man in FF, fragment of mx, then man and woman alternating V/strong. 2nd stn under, likely Italy. At 0557 12/14. Strongest TA tonight, at bruising level, covering CBJ. MoR Instrumentals, FF ancr at 2347 on 12/12. (Connolly)
- 1584.6-MEXICO (Tentative) KEEN has been reported here. A carrier noted, such weaker than 1586, too much QM for audio, 0400, 12/13. (Connolly)
- 1586 -WEST GERMANY Langenberg in like a bomb 89+40, w/mansand woman w/religious talk in GG at 0555, 12/14. Noted at 0723 w/female vocal in GG, style that of old Broadway musical, still at local level. This stn always a good high band cx indicator, as 828 is a good low band indicator. Had interesting jgs w/science fiction movie type electronic mx, good level (89+5), alop from ultrawide OKLM-1570 pest, 2241, 12/12. (Connolly) * In and out 0500-0700 w/gg and mx. 12/9. (Roberts)
- 1602 -WEST GERMANY Munich. Peaking to 89 w/male vocal, considerable CHEB/WVH/WUNH alop, 0323, 12/9. Good w/vocal mx, 89, 2236, 12/22. (Connolly)

A few veries

- 660 -NEW ZEALAND ZTC Wellington, v/q from RHE depicting a bird, address given as Radio New Zealand, Aurora House, The Terrace, P.O. Box 2092, Wellington. (Vernon)
- 740 -PUERTO RICO WIAO V/1, signed by Luis A Mejia, General Manager. Sked in 0349-2300 Mon-Thur, to 0100 Fri-Sat. (Boyd)
- 920 -NEW ZEALAND JYE Greymouth, cannot read managers name on QSL. (Maguire)
- 1300 -NETHERLANDS WEST INDIES NID2 St. Maarten, 2 personal letters signed by Cedric James, DJ and "The Secretary". Address Box 366 or Box 18. (Nansen)

The reporters for this issue

- Bill BAILEY - Holden, Massachusetts
Wes BOYD - Girard, Ohio HQ-180, loop
Kenneth BROWN - Salisbury, Maryland Grundig Satellit 6001, SM-2
Mark CONNELLY - Sudbury, Massachusetts R390A/UHR, 1200' beverage, 300' LW, vertical
Maru DELORENZO - Centerville, Massachusetts HQ-100, SM-2, 200' longwire
Richard ECKMAN - Philadelphia, Pennsylvania BO946/453, Sanserino loop
Jeff FALCONER - Clinton, Ontario 5J-4, SM-2, 75' longwire
Brett HANAWAN - Chula Vista, California HQ-180G, SFR-4, Sanserino loop, 100' LW
Pat HARTLAGE - Jeffersonton, Kentucky HQ-180, LSCA
Albert LOBEL - El Cajon, California DX150A, Sanserino loop, 15' longwire
Bo NENSEN - Umea, Sweden
Nora MAGUIRE - Honolulu, Hawaii HQ-180, Sanserino loop
Jeff ROBERTS - Decatur, Illinois DX150B, SM-2
Randy SEEVER - Chula Vista, California HQ-180A, R390/UHR, Sanserino loop, 60' LW
Elliot STRAUS - Asbury Park, New Jersey R390A, 115' longwire, SM-2
Brian YERSON - Vancouver, British Columbia DX150A, SM-2

That's it. I know it's a little sloppy in spots but it's a new typewriter and I'm doing it at work and I forgot my correction tape and have tried to make do with some trash that isn't worth a damn. Things are bound to improve in time, hi. I hope that all of you will make a New Years resolution to support IDXD, and the rest of the club for that matter. Support has generally been good this season but we can always use more. See you in 7.

DOMESTIC
X
IGEST



editor. Wes Boyd
680 W. Liberty
Girard, Ohio 44420
216 343 4343

First: Seems there is a new pirate in the NYC area. First notified of this by Coleman, who called to inform me. Then further info via a call from Foxy. Call is WCPR and is on 1616Khz (formerly 1620Khz) and announces a sked of Friday eve. & Sat. eve.--11PM to 2:30AM. Sez is licensed by FCC and was hrd mention 50Kw power--Foxy estimates power of between 200 & 500 watts. Thanks to all reporters for info on this station.



A DIVISION OF HERTZ COMMUNICATIONS GROUP
P. O. BOX 1874/BIRMINGHAM, ALA. 35201

- changes .. from the FCC:
- 680 *CP* AK Barrow--seeks call KBRW
 - 720 KDWN NM Seeks 50Kw nite power..
 - 910 WRKL NY Seeks nite operation w/ 1 ~~hr~~ DA
 - 950 WCTN MD Seeks 2.5 Kw daytime--DA
 - 1100 KFAX CA Seeks increase nite power to 50Kw-SH, Install DA-2 & operate nites from present day site.
 - 1190 **** IA Marshalltown--seeks 500watt day/250 nites
 - 1240 KPLY CA Seeks 1 Kw days
 - 1260 WNOO TN Seeks daytime power of 5Kw
 - 1280 WYVE VA Seeks day power of 2.5Kw
 - 1310 WPRJ NJ Seeks call WQTK
 - 1360 WCHL NC Seeks day power of 5Kw, nite power 2.5Kw
 - 1370 WZYQ MD Ex: WMHI
 - 1440 WHDM TN Seeks day power of 5Kw-DA
 - 1480 KVAN WA Seeks 5Kw DA-Nites, separate nite site.
 - 1540 WDOM MD Seeks day power of 5Kw
 - 1550 WOGO FL Seeks call WCCZ
 - KQWB ND Seeks 5Kw nite DA, change city to W. Fargo, ND
 - 1570 WDEW MA Seeks day power of 2.5Kw
 - 1600 KWOW CA Seeks nite power of 5Kw--DA.

α They all say that! - RJE



...now--from reporters:

- 740 CBNM NF On Sunday eves., -CBC runs "Cross Country Network", and has cut-aways, for regional outlets to give area phone numbers to call. Foxy notes hearing CBNM u/ the // stuff giving different phone numbers, so this is a good indicator of conditions (Foxy)
- 790 CFRD NS Still here, but plans move to 680 soon (Foxy)
- 1330 KPH KS "KPH Nitebeat" Teletalk at least Mon.-Fri. 0000-0300 CST, not sure if this runs past 0300 or not. SP still Sunday Morns- 0205 to ??? (NZ)
- 1560 WRSJ PR S/on 0355, then nx & EZ MK 0400+ (KA)

...Now from former NRCer--Hubert Miller---

CARRIER CURRENT STATIONS in Seattle

- 1210 KLK 100 watt Mon-Fri. 3:30P-6PM, Sat. 4PM-9PM (In Wedgewood or North Seattle--erratic sked--RR-PSAs--request line-- best DX is 20 miles)
- 650 ??? 5 Watt--Philadelphia Church (Ballard--W. Seattle--church service broadcasts--best DX is 7 miles)

ALSO:: KCBK 89 FM--30watt (RR, best DX is 25 miles)

- TEST RESULTS:::
- 960 WDLM Tent: TRS-RJE NO: TRS-PRM-BAB-MD-FS-RA Yes: Ross-RLK-KDF
 - 1090 WMTY No: TRS Yes: NZ-RA-KDF-KA-Bull
 - 980 WKLF No: TRS-PRM-RJE-FS-RA-JS Yes: JRS--DMc
 - 1000 KXRB No: PRM-RJE-FS-Foxy-KA-RA-TRS
Yes: HWB-Bull-KDF-BAB-JS-ELK-JRS-DMc-DS-RLK-Ross-CAW-HWB
 - 1140 KLUC No: TRS-Foxy-RJE-Bull-FS-RA YES: CAW-DMc *Ross-RLK-JRS-ELK-KDF-KA
 - 1240 WNS Hrd: TRS-RA-DS-Ross-MD-PRM-RJE-JRS-Bull-KDF-RLK-Foxy-KA
 - 1280 WIVY Hrd: KA-Bull Not Hrd: TRS-RA
 - 1330 WRAM Hrd: TRS-RLK-RA-KA-FD-DMc-KDF-Ross-JRS-ELK-RJE-DS-BAB No: MD-FS
 - 1380 WKTJ Hrd: TRS-RA-FD-DMc-JRS-MD-RJE no: PRM-BAB-KA-Bull-FS
WNRI Hrd: TRS-KDF-NZ-KA-Bull
 - 1420 WASR No: TRS 1450 KATE No: Foxy-MPO 1320 WENN Hrd: MPO-JS
 - 1470 WBTX No: TRS 1500 WKBX No: TRS 1560 WCCP Hrd: Foxy-MPO & JS
 - 1580 KWIP No: TRS 900 WFIA No: RJE

- Well, thats most of the stuff since 12/8...which is this issue's cut date!
r c's
- 1st. FRI: WTTM 920 KFVS 960 (KA)
 - 1st. SAT: WSHN 1550 (KA)
 - 2nd. FRI: KFJM 1370 (CA)
 - 3rd. MM:: KWKY 1150 (RJE) KCCC 930 (RLK)
 - 3rd. TUE: WPED 810 (JS)
 - 4th. MM:: WTAX 1240 (MPO)
- ...NOT HEARDS.....
- 3rd. MM:: KWLA 1400- WDIC 1430- WHSC 1450- WGAU 1340- WLSC 1570- WFTR 1450- WTON 1240- WCON 1450- WPJD 1550 (all by RJE) *All hrd previously no problems 'cept each on this 89, thus presumed not on, M - RJE*
 - 4th. TUE: WHMT 1190 (HWB)

- AND NOW::: The latest "Nitecap" net---from JS & Mutual net
- | | | |
|--------------|--------------|--------------|
| AK KIAK 970 | IA KSCJ 1360 | NC WTIK 1310 |
| AL WCOV 1070 | IL WSDR 1240 | WSJS 600 |
| WVNA 1590 | WGIL 1400 | OH WOHO 1470 |
| WUHO 1400 | WEIC 1270 | WBEX 1490 |
| AZ KTAR 620 | IN WIBC 1070 | OR KOHU 1360 |
| KTUC 1400 | WKBV 1490 | PA WCMB 1460 |
| CA KRDP 1300 | KY WVLC 590 | WICK 1400 |
| KFOK 1280 | WHAS 840 | RI WJAR 920 |
| KOWN 1450 | LA WJBO 1150 | WERI 1230 |
| KTRB 860 | WGSO 1280 | TN WOLI 1490 |
| KIDD 630 | MD WBAL 1090 | TX KRLD 1080 |
| KPSI 1450 | WETT 1590 | KPDN 1340 |
| KGRK 1500 | MA WAAB 1440 | UT KSL 1160 |
| KPLS 1150 | WFGI 960 | WA KGMI 790 |
| KVEN 1450 | MO KBEA 1480 | KVAC 1490 |
| CO KDNB 1340 | MN KRAD 1590 | KENE 1490 |
| CT WNAB 1450 | KGHS 1230 | WI WNFL 1440 |
| WNHC 1340 | NJ WRAN 1510 | WISN 1130 |
| FL WHEO 990 | WHWH 1350 | WY KEVA 1240 |
| WETO 1490 | NY WABY 1400 | VT WVMT 620 |
| WPBR 1340 | WMO 1340 | VA WANV 970 |
| WFLA 970 | WALL 1340 | WINA 1070 |
| WRMF 1060 | | |

KJHR
BIG SKY RADIO
Stouffville, South D kota

This list actually came from "Nitecap Radio Network Inc" in Salt Lake City, via Starr... The list shows the stations on the Mutual net, or going soon!!
Note: WRFM 1060 & WIBC 1070 are not yet on the net, and KGHS 1230 will join on 1/5/76. There are another dozen or so FMers I didn't bother listing--HWB.

Another note, maybe of interest: Local WGFT 1500 CP, has got the towers up!! This within less than a week of Christmas. One week nothing, next week four towers... Starr hasn't had time to check out the ground system, or the buildings yet. Anyhow...this might be testing shortly---more as we find out whats happening!--HWB & STARR

Due to the "Holiday break", the cut date was moved back to 12/8 for this issue. Next one will return to the regular system.

- sunset & evening**
- 540 CBT NF 12/13 Local pgms 1847-1900 ID as CBC Nfld & Lab, (FS)
 - WARO PA 12/19 Alone, 1645 Jx as "WARO Progressive Rock", then Church PSA 1645 (HJH) Progressive???--You sure??--HWB
 - 560 CKCN NS 12/14 U/ WGAN 1900 w/ FF-R. Can. net, local ID (Foxy)
 - *580 ~~CKCP~~ ON 12/12 Must be on high power, atop most of 1722-1920, many ads, few IDs, misc. mx., Back to Bible 1830 (BAB)
 - 590 CKRS PQ 12/14 U/ WEEI 1752 in FF, w/ promo (Foxy)
 - WROW NY 12/8 O/u WEEI 1752 w/ ID (JFP)
 - 640 WHLO OH 12/13 Weak, 1906 ID, local ads (FS)
 - 690 KGGF KS 12/12 HS BB 2330-2345, atop at times (KA)
 - 730 UNID ?? 12/10 Someone here 1633 w/ relig.--WPII?? (MPO) Yep!--HWB
 - KBOY OR 12/8 RR, ID AM-FM, 1755, weak & choppy (JTA)
 - 780 WAVA VA 12/21 S/off 1645, ID, FM promo--no SSB (JFP)
 - 790 WAKY KY 12/12 In steady, 1704-1730 w/ RR mx (KA)
 - KSPD ID 12/8 W/ NIS net 1825; ID as "Newsradio 79" (JTA)
 - 800 WTMR MA 12/10 Loud 1629 w/ad, 1630 s/off (FS)
 - 860 KWPC IA 12/14 Iowa nx 1710, o/u KOAM & polka station (KNUJ?)(RLK)
 - 890 WNNC NC 12/14 Local AD 1625, into ID 1627 (FS) Nightly pest here--HWB

10
 930 WIZR NY 12/19 Sx 1625, s/off 1630 w/ FM promo-much WCNR QRM (HJH)
 950 KBRJ ID 12/8 C&W mx, ID 1840, frequent IDs (JTA)
 960 WEAV NY 12/17 W/ CHNS 1824, w/ ID (JFP)
 970 KQAZ MN 12/14 w/ VIKINGS FB 1716 (RLK) VANCOUVER, B.C.
 990 WBTE NC 12/18 Good 1654, seems C&W--"The radio station that cares,your radio station" (HJH)
 1120 KMOX MO 12/8 CBS nx 1854, thru KPNW!!! (JTA)
 1220 CJSS ON 12/19 Hrd. 1706 in WGAR null, ending nx,into RR (HJH)
 1260 WCDJ NC 12/14 S/off 1659 o/ WWDC, no SSB, then only WBUD/WWDC (DS)
 1280 KNAK UT 12/8 W/ NX, ID 1901, AD, way o/ KJOY/KFOX (JTA)
 1310 KFKA CO 12/14 Polka mx 1808 (Bleachhh--HWB), & lotsa Ads (RLK)
 1380 WGSE NC 12/9 In 1545, weak/fair, local ads, soul mx & jx (HJH)
 1440 WCHB MI 12/10 National Black Net 1652, "Super CHB", soul mx (MPO)
 1450 CHUC ON 12/20 U/ WKTP 1745 w/ ID (JFP)
 1500 WKER NJ 12/11 U/ WDEE/WTOP 1631 w/ s/off (CA)
 1570 KOLS OK 12/12 S/off 1815, all alone, amazing!! (KA)
 1580 WESY MD 12/12 W/ R&B/Soul 1750-1800 s/off, in the group (KA)
 WPGC MD 12/10 End s/off 1644, FM ment.,quick AM ID (FS)
 WVKO OH 12/10 Soul 1650, Natl. Black Net nx, 1700 s/off (FS)
 WAMY MS 12/16 S/off 1745, FM promo, very weak (HJH)
 KCHA IA 12/10 Local Ads, mx 1650 (MPO)
 KZIA NM 12/14 W/ BRONCOS FB 1821 (RLK)
 1590 WPLW PA 12/17 Ending s/off 1658, for call change (MPO)
 1600 WKEN DE 12/17 Finally, 1630, YL w/ nx, then Ae nx (HJH)
 midnight to sunrise
 *560 CFOS ON 12/15 Nx 0102-0109, relig. message to 0112 s/off w/ Oh Can., S/on as 0545 (JS)
 590 WOW NE 12/8 RR 0340-0430, some Cuban QRM
 610 WSGN GA 12/15 Soul 0235, Jx Id 0237, rather weak (FS)
 710 WUFF AL 12/14 AD 0635, PSA, And "Big WOOF" ID (Bull)
 850 WJAC PA 12/16 In well, WJW nulled, local nx at 0105 (JRS)
 UNID ?? 12/22 O/u Sser 0110 w/ relig. pgms.--who?? (MPO) KOA!---HWB
 860 KOAM KS 12/8 C&W mx 0030-0100, then s/off, via BW tip (KA) Who?-HWB
 940 WIDG MI 12/8 ID 0005 on ET-TT, peaked, then u/ WINZ forever (KA)
 KIOA IA 12/15 W/ ET-TT 0414-0432(ELK) Real heavy catch!---HWB
 960 CKWS ON 12/15 Potent, w/ RR 0143, looking for WDLM test (FS)
 CFAC AB 12/15 W/ C&W mx, TC, promo 0147-0200 (FD) 12/15 Atop w/ C&W 0244-0248 w/ C&W, Hockey scores--PEST! (PRM) 12/15 Great w/ a mix of C&W/MOR, 0135 (JRS) Methinks 12/15 were a good AM--HWB
 1000 KOMO WA 12/15 Carrier on 0328, ID as ET 0329, then off (CA)
 1090 CKKW ON 12/8 ID & C&W 0321 prior to WMTY DX. (KA)
 1110 CBD NS 12/15 Noted 0020 u/ WBT, pgms // 1070 CBA (Foxy)
 1140 UNID ?? 12/15 Who w/ ET @0330 w/ "The Entertainer", weak u/ KLUC D., short TT, then mx (CAW)
 CBI NS 12/15 Weak s/on 0447, not enuf to report (KDF)
 1150 WGOV TN 12/15 ET w/ RR 0335-0345+, ID every record, loud as usual(DS) And as usual, the fink don't verify \$%%*!@?+ (HWB)
 1220 CKCW NB 12/15 Atop 0243 w/ wx, TC, muchy xmas mx (FS)
 1230 WQDY ME 12/18 Atop 0700-0800 w/ ID, Ads, slop from local 1240(JFP)
 CHVD PQ 12/18 ID 0720 as "Doubeau- CHVD" (JFP)
 1240 WFTN NH 12/8 TT 0133 on ET, was using a portable & a lantern during a power failure (KA) Hey, you should listen to the lantern more often, but where do the headphones plug in?---HWB.
 1260 WBUD NY 12/21 Local nx/wx, IDs, 0235-0235, NIS net(Sillimansky)
 1280 WANS SC 12/8 Briefly, ET-TT-OC 0224-0228, looking for WIVY, ID 0226(RA)
 +1290 WTUX DE 12/15 Loud s/on 0559, on PSA pwr., into Mutual nx 0600 (JS)
 1320 WOIC SC 12/15 O/u WVOJ w/ wx 0158 (MD)
 1330 WFTF FL 12/15 Atop w/ nx 0200, C&W 0202 (MD)
 WFIN OH 12/13 S/on 0601, Flagship station of ?????????? (CA) Flagship station of Findlay Publishing---A real heavyweight---HWB
 + KWVL IA 12/15 ID 0202 while looking for WRAM test (Bull) 12/15 S/off 0202, then SSB (Ross) 12/15 S/off loud 0104, then SSB & another ID after that. (JS)
 WTRX MI 12/15 In/Out 0220+, w/ WHOT atop freq., unusual (RJE) I sure you don't mean WTRX!---HWB unusual WTRX to be hrd here at all- RJE
 1340 CJLS NS 12/22 S/off 0036, on late w/ hockey game (Foxy)
 WBGH KY 12/15 RR 0405-0415 (BAB)
 WDME ME 12/15 ID 0800 as "Dover-Foxcroft",w/ WFAU, then Ai nx (JFP)



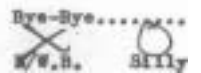
1370 WKFD RI 12/18 PoP 0159, CW ID 0200, full ID, then TT..More IDs 0340..
 WFPA NH 12/9 S/off by YL 0117, change?? (PrM) (Foxy--JS)
 WW?? ?? 12/13 TT, s/off 0317, bearings for WWAM, no QTH given,HELP(CA)
 *1380 WOTA 12/10 W/ SW MT wx 0129, then JX ID (RLK)
 12/15 S/off 0115, anncd. s/on as 5AM (RLK)
 WFOB NC 12/8 S/on for ET 0302, u/ WNRI-WBNX (RA)
 WTVR VA 12/15 Think was ET, 0121-0135+, automated C&W stuff. Records cut in middle,etc.-no WKTJ test (DS) 12/15 Weak ID 0101 ments. sked operations (JRS)
 1400 KFRU MO 12/13 W/ St. Louis Blues Hockey 0133 (RLK)
 WSGA GA 12/15 Atop 0202 w/ fog warning, ID, then RR (DS)
 WYSL NY 12/18 RR, fair 0210, "WYSL plays more mx" (HJH)
 1410 WBZA NY 12/17 W/ WPOP 0730 w/ ID (JFP)
 CFGO NS 12/22 ET w/ C&W 0430 via "Shafton Tip" (FAR OUT--HWB),mx till 0450, called & sez RS was Oct. 31st. (Foxy)
 1470 WOHQ OH 12/15 O/ unid OC 0227 w/ wx & RR (FS)
 1500 WTOP DC 12/15 Area wx 0522, my 1st. DC station (RLK)
 1520 KOMA OK 12/16 Good w/ RR 0019, o/ WKBW (JRS)
 WANR OH 12/22 Hrd. 0338 w/ NIS net, WKBW off (MPO)
 1550 WSHN MI 12/8 ET w/ RR 0018-0030+, called & sez ET on new xmtr.(MPO)
 KEDD KS 12/11 TT o/ KKHI, s/off 0130 (CA) 12/15 ID 0232 u/ unid ET-TT
 1560 UNID ?? 12/13 S/off 0105 sez ends 18hr bdest day o/ UNID (MPO) (DS)
 *1580 CBJ PQ 12/11 Mx 0440, s/on 0500, earlier than usual (CA)
 1590 WQQW CT 12/16 Fair in WAKR null w/ ID at 0000. (JRS)
 I600 WGIV NC 12/15 Loud (day, pattern??) w/Soul, not gospel as reported earlier. (DS)
 1600 UNID ?? 12/15 Who w/soul much of AM? (FS) WGIV-KATZ (Silly)



Thats it group, looking back over this issue I note that 50% of the stuff reported has no tip value, and are common loggings. Starting in '76, I will no longer run such items..be honest, what value is "hrd. ID at 0105"??? I can't see that helping anyone. Some of these are from newer reporters and I can understand that, but some of these are from experianced DXers! Shame on you guys!---HWB

And now the fearless few that brave the postal rates to report::

- | | | | |
|-------|--------------------|------------------|---------------------------------|
| RA | Ray Arruda | New Bedford,MA | TRF & SX122/ SM |
| BULL | Tom Bull | Washington,DC | HQ180 SM |
| BAB | Bruce Boomer | Nutter Fort,WV | HQ200 LW |
| KA | Kelly Andrews | Greensboro,NC | SX99 LOOP Lantern |
| MD | Super Marc | Centerville,MA | HQ100 & fried! |
| RJE | Rumford J. Egnog | Kinnelon,NJ | Whole Buncha stuff |
| Foxy | Boob Foxwoith | New York City,NY | Bigger buncha stuff |
| Ross | Ross Hansch | Madison,WI | HQ180 Loop |
| HJH | Harry Hayes | Gouldsboro,Pa | Zenith T-0 SM |
| dm | Scorego | | "I WANT PEOPLE!" SPECIAL |
| ELK | Rick Shafton | Parma,Ohio | HQ180 Antenna |
| PrM | Paul Mount | Teaneck, NJ | R1551 (your license plate?-HWB) |
| Dmc | Lil Davie McCourt | Williamsport,PA | HQ160 loop SM Bev. |
| TRS | Tom Sundstrom | Willingboro,NJ | More of the buncha stuff gang. |
| RLK | Robert Keeney | Lawrence,KS | HQ180 -SM -Big phone bill |
| JRS | John Sally | Krejnny Land,Oh | Radio Shack TRF |
| DS | Don Schmidt | Lowellville,DE | HQ180 Antenna |
| CAW | Charles Wolff | Castro Valley,CA | HQ200 Wedge loop |
| NZ | Neil Zank | Lincoln,NE | HQ160 SM/ Sony TFM 75-LW |
| FD | Frankfurter Dailey | Preston,CT | HQ180 & loop |
| JFP | J. Peterson | Auburn,ME | DX150 & Lms |
| CA | Clay Adamson | LeRoy,NY | ???????????????????? |
| JTA | John Athur | Bridgeville,CA | SX43 LW |
| FS | Frank Stiles | Winchester,MA | DX150 SM |
| KDF | Karl 4th. | Villa Park,Ill. | HQ160 SM |
| MPO | Michael O'Shea | Buffalo,NY | HAG00 LW |
| Silly | John Silliman | Girard,OH | Zenith-TO |
| JS | Jerrald Starr | Hubbard,NM | HQ180 loop |
| HWB | Homer Krenjy | Padded cell | Singer port. |



editor: Norm Maguire

2877 Kalakaua Ave. Apt. 703
Honolulu, HI. 96815SURVEY OF LATIN SPLITS - Update No 1

This updates the list of DXN Vol. 43-8 to December 1975.

<u>DXer</u>	<u>Location</u>	<u>Countries</u>	<u>T.V.</u>	<u>For.</u>	<u>South America Best</u>
R. Anderson	Virginia	102 VAC	1444	510	78 HC2LA Ecuador
H. Wilkinson	Washington	68 VAC	364	360	78 HCVE-4 1395
D. Reynolds**	California	79 VAC	1394	472	70 WTL-9 1270 10kw
S. Morse*	Massachusetts	82 VAC	3922	424	62 NYD-7 1390 2k Brazil
A. Imprescia	New York	67	1286	93	55 PJA-5 Neth. Ant.
A. Rugg	Quebec	60	1430	1245	48 ?
B. Dangerfield	Pennsylvania	115 VAC	417	340	43 ZP-14 Paraguay
R. Schiller	Florida	84	1851	339	39 HCPB-6 1345 3 1/2 kw
G. Allen	California	60 VAC	2943	530	34 HCJB 974 1kw
H. Gustafson	Illinois	100 VAC	840	294	32 CB-138 5kw Bolivia
C. Freeman	California	63 VAC	1518	360	26 PRG-2 1040 Brazil
N. Maguire	Hawaii	55 VAC	2855	407	15 CX-18 890 5kw
R. Sperry	Connecticut	42	1669	249	15 CX-28 Uruguay
H. Robie	Massachusetts	89	262	147	14 LRA Argentina
D. Phillips**	Alabama	26	567	40	9 HJKL 605 Colombia
F. Wheeler*	Pennsylvania	23	1675	188	7 LR5 830 10kw
B. Reynolds	Missouri	28	1064	121	6 LR3 950
R. Leamy**	Ohio	45	311	112	5 HCJB 700
E. Wesolowski	Nebraska	23	1650	141	4 RJD-2
R. Eddie**	Missouri	15	788	50	3 HCJB 700
M. Sorensen	Manitoba	13	537	385	1 PJB 800
D. Whatmough**	Ontario	11	930	820	1 PJB 800
P. Mount	New Jersey	3	178	15	1 PJB 800
M. Breger**	New York	49	895	194	? Peru 880
B. Karchevski	California	8	204	29	--

Welcome to Alan Imprescia and Ron Schiller. Glad to have your totals listed. Hope those with (*) or (**) will bring their totals up to date. T.V. = Total veries. VAC = Verified all continents. My desk is still piled high with correspondence so will not get any Christmas cards out this year. However, had a wonderful trip to New Zealand, Australia and Fiji. Had the pleasure of viewing those fabulous veries and listening to DX roll in at the various places I visited. Am sure grateful for the hospitality extended to me by all those in New Zealand and Australia. Had a visit from Gregg Calkin on his way to Canada. Will be visiting my son in Redondo Beach, Cal. (Dick) over the Holidays and then on to Albuquerque for a couple weeks. Happy Holidays and good health. 73 and Aloha, Norm

NOTES &c FROM NJPC

Re the recent request for members who will do receiver work an alignment Steve Bohac informs us that he is willing to do such work for NRC members. Recent musings indicate that he has done some work already and that it is reasonable and thorough, to which we at HQ can attest. If interested, write Steve at 97 Shaler, Fairview, N.J. 07022.

535	R. Grenada - complete w/audio.
576	(delete)
635	Ondas Quevedeñas, ECUADOR
661	Mi Preferida, Managua, NIC.
953	R. Progreso, CUBA.
955	R. Carrillon, HAÏTI (Panamá still not noted).
1031	Radio Guamá, CUBA
1035	Radio 4VEH, HAÏTI & R. Reloj, Managua. (Panamá off the air, per Objío)
1059	R. Revolución, CUBA
1088	R. Musical Nacional, Camagüey, CUBA
1135	Voz de la Costa Sur, GUAT.
1145	Voz del Atlántico, HOND.
1161	R. Artemisa, CUBA.
1163	R. Progreso, HOND.
1368	R. Siboney, Stgo., CUBA
1387	R. Bayamo, CUBA
1402	R. Musical Nacional, CUBA
1419	Voz de Baracoa, CUBA
1505	Radio Canoa, Cartagena, COL. w/R. Anguilla.
1596	(delete for now).

Thanx to Bob Foxworth & César Objío for comments & info. (RFS)

UPDATER - 1230 kHz LOG - Dave Lewis

Updater for 1230 Kcs. Log which appeared in the 15 December 1975 DX NEWS

KIFW-AK Sched: 0900(1000)-0207(0116Sat), Format: Mainly Top 40
 WMAF-FL Sched: 0600(0700)-2100(2300Thur/Sun), Format: Country w some Gospel
 KORT-ID Net: Accel, Sched: 0800(0900Sat/Sun)-0200(0300Sat/Sun), Format: EZ - Top 40
 KTNC-NE Net: A1 (only), Add: Box 589, Sched: 0700(0800)-0100, Format: CW - MOR - Potpourri
 KCEN-NV Format: Top 40
 KOTS-NM Sched: 0700(0900)-2100(1915)
 WCWA-OH Sched: 24 Hrs NSP, Format: MOR
 KSST-TX Sched: 0530(0630)-2330(0100Fri/Sat)
 WXCO - Wausau, Wisconsin 54401 - Box 778 - 0708-0000 - Country - C
 KVOC - Casper, Wyoming 82601 - Box 2090 - 0700-0200 - Country - A1

CLIPPING CORNER

MOWERS PUT BUZZ ON RADIO

By LES WHITTINGTON
Financial Times

TORONTO — The cost of better radio reception may be a slightly more expensive lawn mower, chain saw or snow blower.

This is because many manufacturers and importers of internal combustion engines may have to alter their products' ignition systems to comply with recently-published federal regulations.

The regulations, to become effective Sept. 1, 1976, are designed to curb radio interference.

How many products will need changing and how much the retail costs will rise is as yet unknown, although the price increases in most cases are expected to be small.

The standards cover all internal combustion engines except those in aircraft. However, because the regulations were developed in conjunction with industry, some products — particularly North American-made cars — should already meet the specifications, according to government officials.

Hartmut de Witt, an interference engineer with the department of communications in Ottawa, said the majority of other vehicles and equipment with internal combustion engines will require alteration. These include motorcycles, outboard motors, chain saws, snow blowers and garden equipment.

The alterations will entail use of different spark plugs, alternate shielding materials on the ignition wires or, in some cases, a redesign of the ignition system.

Manufacturers of internal combustion engines must carry out specified tests and make results available to the communications department. All products must also carry a sticker saying the product meets the radio interference regulations.

From the Vancouver Province 11/17/75
Via Brian Vernon
San Francisco Chronicle
Dec. 25, 1975
From: Vern Mathan
San Francisco, Ca.

An FCC Hearing on Radio Station Format

Washington

If a radio station decides to shift from classical to country music, and some listeners protest, should the Federal Communications Commission intervene?

The FCC said yesterday it doesn't think so, but in view of a federal court ruling it is undertaking an inquiry into what role, if any, it should play in examining proposed changes in entertainment formats of broadcast stations.

The commission said that for 16 years it has sought to avoid "dubious intrusions into the broadcaster's programing judgment." As a matter of policy it has permitted musical entertainment format changes as the marketplace might dictate, it said.

"In the present controversy, we are being called upon to substitute our judgment for that

Sahara Radio Now Morocco's
RABAT, Morocco, Dec. 14 (Agence France-Press) — The national radio station in the capital of Spanish Sahara, Azas, has become a regional station of Moroccan radio and television. It was reported here today. A staff of about 40 broadcast 11 hours a day in Arabic and seven in Spanish.

New York Times
12-24-75
Via Bob Schuler

of the applicant on the most subjective grounds imaginable without any clear danger to the public interest," the FCC said in a 7-to-0 decision.

The decision to take a closer look at its policy was made as a result of a U.S. Court of Appeals ruling here a year ago involving radio station WEFM in Chicago.

In that case, Zenith Radio Corp. applied for approval to sell WEFM to GCC Communications of Chicago Inc., which said it planned to change from classical music to popular or rock and roll.

The FCC rejected a petition opposing the sale and format change filed by Chicago Community to save WEFM. The commission said there was no substantial dispute as to the existence of classical music on other stations in the area and no useful purpose would be served in holding a hearing on the question.

Associated Press

WEAQ

MUSICRADIO 790

Post Office Box 1
Eau Claire
Wisconsin 54701



October 29, 1975

Ronald J. Musco
16 Chestnut Dr.
Windsor, Conn. 06095

Dear Ron:

I am sorry to report that I am unable to help you out with an equipment test in the near future, but I would like to offer some words of encouragement and helpful information that you may publish.

WEAQ transmits Top-40 type music 24 hours per day, six days per week. Due to local programming decisions, we are off-the-air Tuesday mornings from midnight to 5:00 AM CST for maintenance, instead of the customary Monday mornings. As a result, we are on-the-air with regular programming while most other stations are off.

We do not use long-distance commercial frequency measurement services, so we almost never have reason to use the non-directional antenna during the experimental period. If we did, it would be Tuesday morning only, with all its on-air interference. I shall keep your address on file here and attempt to notify you in advance of any non-D tests in the next year.

Take heart, though! DX is possible off the East end of our D.A. during unusual weather conditions or refractive inversions. The antenna system has a large amount of high-angle radiation that can, on occasion, propagate long distances. I have received a report from New York State that was verified! Keep trying. I will send a certificate of confirmation to any verifiable reports.

Sincerely,
WEAQ RADIO
Hank Kaul
Hank Kaul
Chief Engineer



5,000 WATTS
DAY AND NIGHT



(715) 833-3463



Build Your Own Audio Filters

by Phil Sullivan

I. Introduction

Previous articles in DNX ^{1,2} have described the usefulness of audio filters for DX and have shown how to install such filters in a receiving set-up. These articles stopped short of showing how to build the filters themselves, but rather suggested the purchase of surplus audio filters. The chief disadvantage of this is the limited selection of frequencies available and the scarcity and cost of certain types of filters such as high pass and band pass.

To help fill this gap this article shows the design and construction of some very versatile audio filters for DXing. Part II (below) shows the construction of a high pass filter; such a filter can be used to eliminate 60 and 120 Hz hum as well as much of the low frequency garble and hets that are common on very crowded channels. Part III (to be published later) will cover a low pass design. While filter design in general requires some high powered math all the relationships needed for these filters will be reduced to "cookbook" formulas.

II. High Pass Filter

A. Choice of circuit:

There are two basic types of circuits that can be used for a high pass filter. The first, figure 1, is a passive filter (i.e., no amplifiers); the second, figure 2, is an active filter (i.e., amplifiers are used as building blocks in this filter). With the proper component selection these two circuits can give identical frequency responses.

At first glance figure 1 seems the way to go - it has fewer parts and requires no amplifiers and hence no power for the amplifiers. But there are two main disadvantages to this circuit: 1) Since there is no amplification we can not get out more power than we put in - and to break even on the power and to get the proper frequency response we must match impedances in and out of the filter. This can be accomplished without too much problem at one frequency; however switching frequencies requires changing both the inductors (L's) and capacitors (C's) to maintain the match. 2) For the frequencies we want to design the filters for the component values are such that obtaining components of tight enough tolerances (+5% or better) is almost impossible. For a 100 Hz filter in a 3,2Ω system the C's will be on the order of 500μF where +20% is about as good as you can reasonably obtain. Going to a 600Ω system reduces the C's to the 1-10μF range but requires L's of around 1H which are also not available in the required

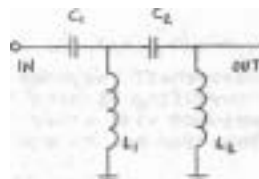


Figure 1

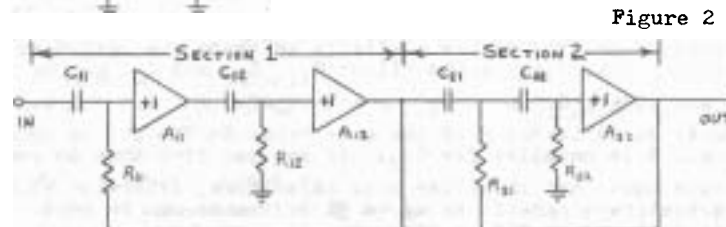


Figure 2

tolerances. And you will require 2 L's and 2 C's for each frequency you want a filter for.

The filter in figure 2 eliminates both of these problems. Because of the amplifiers there is no need to match impedances on the input and output. The input of this filter is a high impedance so it does not load the circuit driving it; the output is a low impedance so it is not loaded by the following circuitry. Since there is no need to match impedances we can switch frequencies by changing either the resistors (R's) or the C's. As will be shown later 3 sets of resistors, each for a different frequency, can be switched in combinations to yield 7 different cut-off frequencies. Also component values tend to be quite reasonable - C's up to about .02 μF and R's from about 10 to 300kΩ, both of which can be had in ±1% tolerances.

There are some disadvantages to the active filter (figure 2): 1) Power is required for the amplifiers; however this can be simply a pair of 9V batteries. 2) Power levels must be kept down to where the amplifiers can handle the signal - for the amplifiers to be described in this article this means the filter can't directly drive a speaker. The filter will have to be followed by a power amplifier, either the final stage of the receiver or an auxiliary amplifier (such as in a tape recorder).

B. Component selection

Referring again to figure 2 the component values are given by equations 1a through 1e:

$$1a) R_{11} = T_{11} / (C_{11} f_0)$$

$$1b) R_{12} = T_{12} / (C_{12} f_0)$$

$$1c) R_{21} = T_{21} / (2C_{21} f_0)$$

$$1d) R_{22} = 2T_{22} / (C_{22} f_0)$$

$$1e) C_{22} = C_{21}$$

f_0 is the cut-off frequency in Hz; C's are in Fd; R's are in Ω.

In the above equations the T's are numerical constants derived from filter theory. For this filter these constants are:

$T_{11}=0.04442$; $T_{12}=0.56261$; $T_{21}=0.10723$; $T_{22}=0.06600$ (Ref. 3)
 These constants give a filter with a 4 pole Tchebysheff response with 1 dB of ripple. This should be adequate for DXing without being unduly complicated. If you want to experiment with other filter responses see the appendix to this article for how to obtain the required constants.

The capacitors should be obtained first as there are not as many different capacitor values available as there are resistors. As a starting point, for a 100Hz filter C_{11} , C_{21} and C_{22} can be between .01 and .03 μ F; C_{12} between .02 and .05 μ F. Perhaps the easiest thing to do is to buy 5 of the same value in the .01 to .03 μ F range and use 2 in parallel for C_{12} . If you can find them in your local surplus house get 1% silver mica capacitors, otherwise mica, mylar or polystyrene capacitors up to 5% tolerance can be used. Any voltage rating over 15V is adequate.

When the capacitors are in hand calculate the required resistor values by equations 1a through 1d. Resistors should be kept below 250k Ω if possible and certainly below 500k Ω to avoid loading by the amplifiers. Use larger capacitors if necessary to keep the resistors below this limit. Again 1% tolerances are recommended but 5% should be adequate. Any power rating of 0.1W or better is safe to use.

The next item is the design of the amplifiers. These amplifiers have a voltage gain of 1, which is not as worthless as it may seem. They do have a high current gain which buffers the input from the output. Thus the load current drawn from the output of an amplifier does not affect the voltage supplied to the amplifier input because the input current is many times smaller.

There are several ways to construct such a unity gain amplifiers (a.k.a. a voltage follower). The method that has been found best for this application is the enhanced emitter follower circuit shown in figures 3a and 3b. The two circuits give identical responses except for their DC offsets; about -0.7V in 3a and about +0.7V in 3b. To balance out these offsets the amplifiers should be alternated - make A_{11} and A_{22} one kind and make A_{12} the other kind.

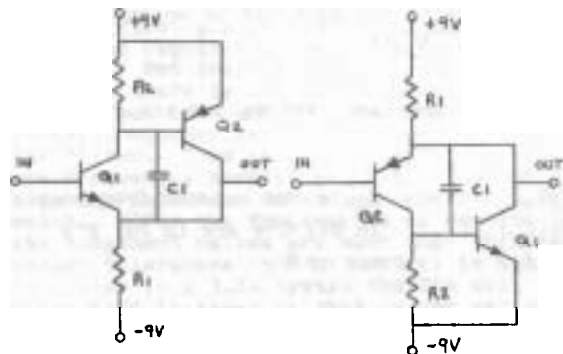


Figure 3a

Figure 3b

Amplifier Parts List:

- R_1 5.6k Ω 0.25W
- R_2 1.8k Ω 0.25W
- C_1 47pF
- Q_1 2N2222, 2N3903,
2N3904, MPS-A10
- Q_2 2N2907, 2N3905,
2N3906, MPS-A70

(These parts are for both 3a and 3b)

Amplifiers such as these have 100% negative feedback - this makes them quite insensitive to component tolerances. The capacitor and two resistors in the amplifier can have tolerances up to 20% and any of several general purpose audio transistors can be used - the transistor types listed in figure 3 are just some of the more readily available ones, many others will work as well. Incidentally the capacitor in this amplifier is to roll the response off at high frequencies to prevent oscillations; omitting it will likely wipe out nearby TV reception.

C. Frequency switching

As mentioned above it is possible to change the cut-off frequency of the filter by switching either the R's or the C's. The consideration of component availability leads us to leave the C's fixed and switch the R's.

The simplest switching scheme would be to use a 4 pole rotary switch to switch in a new set of 4 resistors for each cut-off frequency. However there is another way that gives more possible cut-off frequencies for the same number of components. To see how this is done rearrange equation 1a as follows:

$$f_0 = T_{11} / (R_{11} C_{11}) = (T_{11} / C_{11}) G_{11} \quad \text{where } G_{11} = 1/R_{11}$$

Similar expressions can be formed from equations 1b, 1c and 1d. In all cases, if the C's are held constant, the cut-off frequency is proportional to the conductances (G's) in the filter. When resistors are connected in parallel the total conductance is the sum of the individual conductances ($G_t = G_1 + G_2 + G_3 + \dots$, where $G_i = 1/R_i$). Thus if two sets of resistors (R_{11} through R_{22}) are switched into the circuit of figure 2 in parallel they will act as a single set of resistors whose conductances are the sum of the conductances of each pair of resistors. And since the cut-off frequency is proportional to these conductances the cut-off frequency of the filter will be the sum of the cut-off frequencies produced by either set of resistors alone. In summary: For this method of switching cut-off frequencies add directly.

D. Complete filter

Putting the pieces together we obtain the circuit in figure 4. This shows 3 sets of resistors and the required switching. The table of resistor values given here are merely an example; the actual values required will depend on the capacitors and cut-off frequencies selected. The R's and C's in this example are for a filter with cut-off frequencies of 100, 200 and 400Hz (and by the switching method discussed in section C above the cut-off frequencies of 300, 500, 600 and 700Hz are also possible). Note the 2 values given for the resistors, the first is the selected 1% resistor value, the second, in parentheses, is the exact value calculated from equations 1a through 1d. Also, note capacitors C_2 and C_3 - these are to decouple the power supply lines.

E. Power supply

The DC power required for this circuit is not very critical. Although the circuit is shown operating from +9V supplies these supplies can range from +8V to +24V. For +9V the current drain is

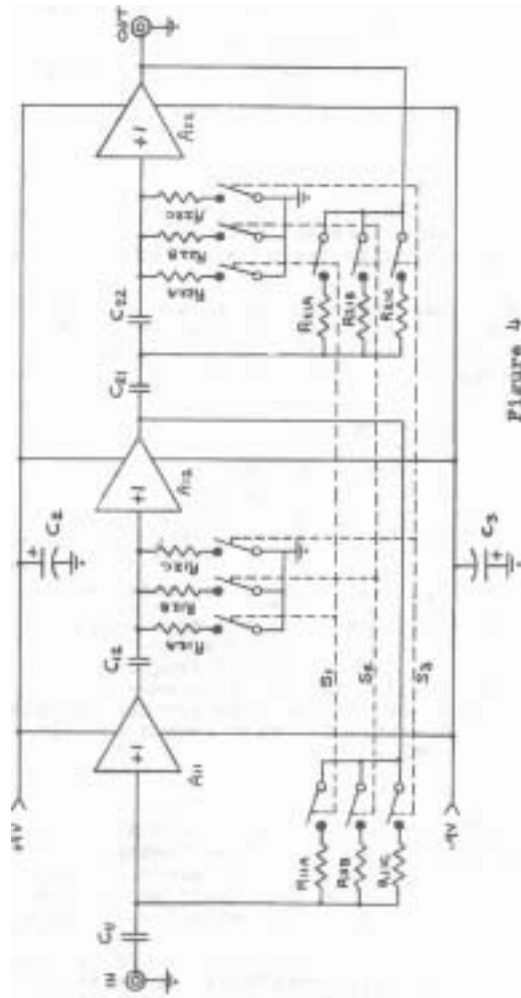


Figure 4

	a. (100Hz)	b. (200Hz)	c. (400Hz)
R ₁₁	38.3 (37.966)	19.1 (18.983)	9.53 (9.4915)
R ₁₂	243 (240.43)	121 (120.22)	60.4 (60.108)
R ₂₁	45.3 (45.825)	23.2 (22.912)	11.5 (11.456)
R ₂₂	113 (112.82)	56.2 (56.410)	28.0 (28.205)

All R's are in kΩ.

C₁₁, C₂₁, C₂₂ 11700pF
 C₁₂ (2 11700pF in parallel)
 C_{2,3} 23400pF
 S_{1,2,3} 4PDT (can also use 4PDT)

about 5mA from each supply and so 2 9V batteries, connected as in figure 5 can be used. Alternately a simple power supply (figure 6 can be substituted for the batteries. The filter on/off switch is a 4PDT so that turning off the filter automatically bypasses the audio signal around the dead circuitry.

Figure 5

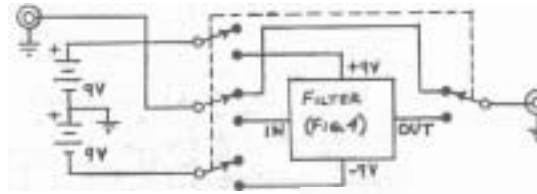
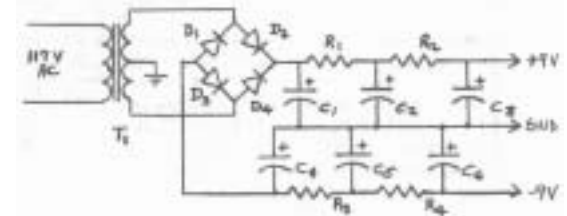


Figure 6

C₁-C₆ 330μF
 D₁-D₄ 1N4001 or equivalent
 R₁-R₄ 47Ω
 T₁ 12.6VCT



F. Construction

For the most part the physical layout of this circuit is not critical. The one area where some care should be taken is in the amplifiers - leads within the amplifiers should be kept short and the decoupling capacitors (C₂ and C₃ of figure 4) should be mounted near the amplifiers. It is suggested that the amplifiers be built on perf-board or, if you have the facilities, on an etched PC board. The filter resistors and capacitors can also be mounted on the same board as the amplifiers or on the switch terminals.

G. Frequency response

Figure 7 shows the frequency response of this filter in dB, plotted in terms of the parameter x where $x = f_0/f$, f_0 being the cut off frequency the filter is designed for and f being the frequency we want the response at. For example, at $f=60\text{Hz}$ a 100Hz high-pass filter would be found at $x=100/60=1.6667$; from the graph this is 26 dB down. Changing the cut-off to 300Hz would give almost 68 dB loss at 60Hz ($x=5$). Incidentally, the cut-off frequency is where the response is down by the amount of the passband ripple - in this case 1 dB. One advantage of this type of filter is the sharpness with which it cuts off; for frequencies below 83% of the cut-off the response is more than 10 dB down (more than 90% of the power is eliminated).

The choice of cut-off frequencies is one question yet to be resolved. The prototype of this filter was built with 3 sets of resistors, one set for each of the frequencies 100, 200 and 400Hz.

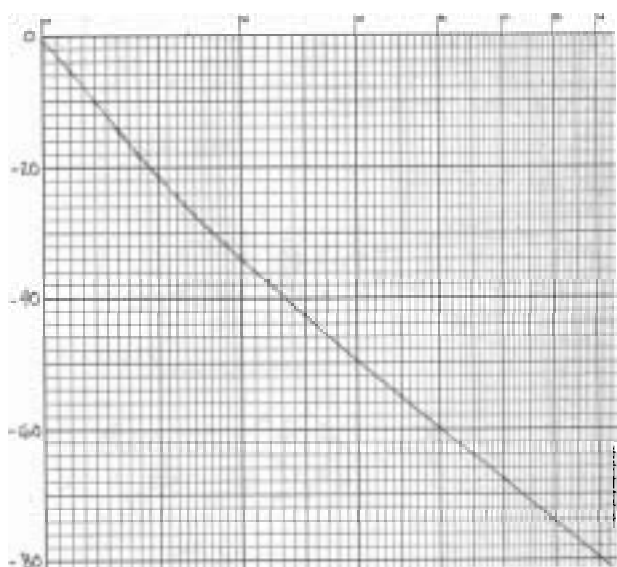


Figure 7

This yields cut-off frequencies every 100Hz to 700 Hz. Another choice would be 100, 150 and 200 Hz. Also, there is no need to stop at 3 sets of resistors; adding a fourth set can give up to 15 different frequencies. It would probably not be worth it to go beyond 4 sets of resistors though as 15 different frequencies is already enough for the purposes of this filter.

H. Installation

As mentioned this filter can not directly drive a speaker so it will have to have a power amplifier following it, as shown in figure 8. This amplifier can be part of a T/R (use the "Line In" input) or a hi-fi amplifier ("Aux" input) or a receiver with provisions for using it just as an amplifier (usually has an input jack labeled "Phono In"). If you'd rather not tie up another piece of equipment you can use a general purpose audio amplifier such as the IC type LM380 or a modular amplifier such as Radio Shack part #277-038. Read and follow the instructions/data sheets/application notes that come with the one you use.

Figure 8 also shows the easiest and safest way to connect the filter input to the receiver. There are several possible variations on this scheme depending on the receiver used and these methods will be described below. If you have any doubt whether any of these methods will work on your receiver don't use them - go back to figure 8 and follow it exactly.

In some receivers the speaker can be disconnected without harming the output stage - if this is the case with your receiver you can disconnect the speaker from the receiver in figure 8. If your receiver requires a load on its audio output stage you can still remove the speaker if you replace it with a resistor equal to the speaker impedance. Use at least a 5W resistor. The filter can also be plugged in the earphone jack. If this automatically turns off the speaker and the earphone normally used is a low impedance type (8Ω or so) the filter input should be shunted by a resistor equal to the earphone impedance - again 5W or more. If you have an auxiliary audio output on your receiver ("Hi-Fi Out" or something similar) simply plug the filter into this jack.

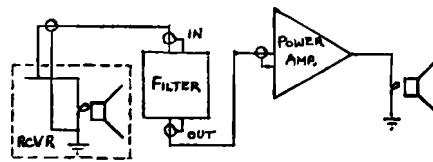


Figure 8

It is also possible to break the audio circuit of the receiver and insert the filter. Details will depend on the receiver but in general the method is: Disconnect the circuitry from the wiper terminal of the volume control. Connect the wiper terminal to the input of a buffer amplifier (such as fig. 3a) located near the volume control. The buffer output is connected to the filter input and the filter output is connected to the circuitry removed from the volume control wiper. The buffer is to provide a proper driving source for the filter; in some cases it may be possible to omit it. This method is not recommended for anyone who has not had experience working with the circuitry of his rcvr.

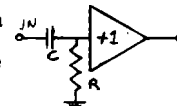
Use shielded cables for all connections to the filter.

Appendix

The information presented here is not necessary for the construction of the filter - it is presented for those who may wish to experiment with more or less elaborate filters.

Reference 3 is a very good short article that gives designs for low and high pass filters up to 7 poles. If you can't find this reference the following gives a summary of the design method:

For each pair of poles use a filter section like section 1 of fig. 2. Here the R's and C's are related by: $R_{ki} = T_{ki} / (C_{ki} f_0)$; $i=1,2$; k is the number of the filter section. A circuit like section 2 of fig. 2 could also be used - follow equations 1c,d,e as examples to find the R's and C's. For an odd number of poles use the circuit above as a filter section.



To calculate the T's: n =number of poles r =passband ripple (dB)

$$e = \sqrt{10^{r/10} - 1}$$

$$E = (\text{csch}^{-1} e) / n$$

$$\theta_k = (\pi/2n)(2k-1), k=1,2,\dots,(n/2)$$

$$T_{k1} = \frac{\sin \theta_k \sinh E}{\pi} \quad T_{k2} = \frac{\cos^2 \theta_k + \sinh^2 E}{4\pi \sin \theta_k \sinh E} \quad \text{For the odd pole: } R = \sinh E / (2\pi f_0 C)$$

The complete filter is made by cascading the various sections - they may be cascaded in any order. The response of the complete filter is:

$$\text{Attenuation (dB)} = 10 \log_{10} (1 + e^{2 \cosh^2 (n \cdot \cosh^{-1} x)})$$

For the filter shown in this article $r=1\text{dB}$ and $n=4$.

References:

1. Audio Filter by G.Nelson, DFN 3/8/1969, pg 21.
2. An Introduction to Simply Constructed Audio Filters & Networks by R.J.Edmunds, DFN 5/16/1970.
3. Simple Active Filters by M.Bronzite, Wireless World, March 1970, pg 117-9.

Between November 10-30, I vacationed in Hong Kong, Bali (Indonesia), Singapore, and Bangkok, with a layover in Tokyo. I used a Nordmende Condor plus a JVC cassette machine. Obvious signals are not reported, and locals from each location are listed only if there is some variance from previously reported info, or WRIVH.

OVERVIEW

HONG KONG-as per WRIVH. No Chinese jamming of 610-640-850 (Chinese language) per se, but a het from 1 or 2 signals is noticeable day and night, and very strong in Macau. Commercial Radio triplexes 610/850/1050, resulting in a strong image on 1250 (2x1050=2100-850=1250) which gives BFBS trouble.

INDONESIA- About 28 AM signals noted in airport, all carrying government program at 7pm LT (1200 GMT); this is in Jakarta. In Bali, 3 locals or semilocals; I don't know their exact frequencies, but guess 765-1206-1545. I am listening to the cassettes for clues. Reception here hampered by severe QRN.

SINGAPORE-As per WRIVH. However, due to mixing, 680 is also on 580, and 630 also on 730; both images are weak. Along with 630-680-790-990-1370, 940 and 1220 from Johore Bahru, Malaysia, across the channel, are strong. Kota Kinabalu-1475 was not good here or in Bali -- only in Hong Kong. There are 220v yellow fluorescent lights fronting each balcony in the hotel; this virtually eliminated DX.

THAILAND. 41 AM and about 25 FM locals were carrying the government program when I arrived in the hotel room at 8:20p (1320GMT). (Two nights later I found an FM which wasn't -- at 1215GMT.) There were four towers within a half-mile of the hotel. I positively identified 4 Thai stations, and did even worse on frequencies. When they are all on, about 5 outside stations come in! Before arriving, I heard that all EE programming had been eliminated. All that was left was on Radio Thailand 920/97 FM. Most stations overmodulate and are distorted; many of the records and commercials (off ETs) have terrible surface noise, and they use the echo chamber alot. Station 20 on 1520 by contrast is undermodulated.

The letter before the country indicates place of reception (B=Bangkok; H=HongKong; I=Indonesia (Bali); S=Singapore; T=Tokyo.

- 530 I INDIA. Jodhpur A fair 2355 11/26
 T JAPAN. Morioka NHK1 fair 1125 11/10. NHK chimes 2155 11/10 //540 550 570
 630/650/670/680/740 (that's as far as I got up the dial)
 540 T JAPAN. NHK1 synchro good 1125 11/10
 I UNID TT 1845 11/22
 545 B HONG KONG. RHK-3 weak 1610 11/26
 548 T USSR. Vladivostok in RR 1132 11/10; at 1335, still strong, with either another
 RR under it, or something leaking through their equipment
 560 T JAPAN. Kobe JOCR strong w/"Harbor Lights" & commls 1130 11/10
 T KOREA, SOUTH. AFKN good 2010 11/10
 570a B THAILAND. UNID appears to be here (Bangkok)
 585a H UNID. CC loud w/floating oscillator 1250 11/19, cl mx 1340. Seemingly jammed
 1515 11/19, and from (B)2015 11/27.
 590 I UNID TT 1820 11/22, and "Smoke Gets in Yr Eyes" 1827 by MV; pops 1845
 600 T TAIWAN. Taipei in loud thru JOAK slop 1335 11/10
 610 H HONG KONG. Commercial Radio not jammed, but CC station readable under day/nite
 Good rock (Beatles etc.) noted w/CC talk 1500-1600 11/21
 615 T UNID Chinese very strong 1335 11/10 hetting JOLK
 620 B THAILAND. Bangkok. S/on 2100 11/27
 625 T KOREA, North. Seemingly jammed 1335 11/10. S/on 2000 11/10 w/anthem, //655
 629 T UNID. Low modulation, cl mx 1340 11/10
 635 T KOREA, NORTH. Muddy quality 2010 11/10
 640 T CHINA. Peking fair 11/10 2005, loud 2015. Weak from (I)1700 11/22
 T KOREA, SOUTH. HLKC Seoul fair 1345 11/10; Peking under
 650a H CHINA. Canton/Kwangtung (guess). Very loud; cuts into RHK-640 day and nite.
 B (as above). "Internationale" GV s/on 2045 11/27; very strong

- 650 B UNID jamming 1940 11/27
 B THAILAND. Bangkok. S/off 1700 11/28 w/2 voice duet of NA
 655 T KOREA, NORTH. Seemingly jammed 1130 11/10 but not at 1335. S/on with
 anthem 2000 11/10 with jamming; //625. At 2015 11/10, noted //745-785-805-855
 660 T TAIWAN. Taipei jammed 1340 11/10
 B UNID lkc TT 2117 11/27
 665 T UNID, CC, jammed 1340 11/10
 680 H UNID, weak daytime reception. 5 time pips in 5 sec.(4 low, 1 high), 0300
 11/13 into "With a Little Bit of Luck." At 2320 11/13, "A Time for Love"
 by Mancini, and in instr. of "Another Tx/Another Place." At 0000 11/14,
 "Chim Chim Cheree." Heavy drama 1345 11/19 with DZAS in/out. At 0900
 11/16, "Wm. Tell Overture" which started at 45rpm and dropped to 33.
 At 1520 11/19, anthem and s/off. ????
- 690 H BANGLADESH. EE nx, ID 1522 11/19, into native mx
 T JAPAN. JOAB Tokyo. OC goes on 2010; ~~chimes~~ start 2020 on all of NHK2
 T UNID; Jamming 1955 11/10 all alone - no audio
 I UNID TT 1845 11/22
 B UNID CW 1940 11/27 - - - - ; same code on 1040
- 700 H CHINA. Peking. EE lessons 1345 11/19, different from 970, 940, 880//890.
 Fairly weak with 2nd signal noted under, possibly CC
- 705 B THAILAND. Bangkok. S/on 2100 11/27. Very thin "pinched" signal
- 710 T KOREA, SOUTH. HLKA Seoul. Noted 1340 11/10. Jamming on this heard around Asia.
 H PHILIPPINES. DZFM heard w/ "Manila Road Show" fair 1010 11/13
 H UNID. Loud 0007 11/14; then off; then back, as if pattern change or power
 reduction; much weaker than before
 I UNID s/off 1700 11/22; too strong for Fiji? Also EE 1045 11/23
- 720a B INDIA. Madras A w/het, fair 1945 11/27; still on 2045
 H UNID. "Raindrops KFOHM" and "Secret Love" (James Last) 0955 11/14
- 725 B UNID. Loud w/mx around 2000 11/27
- 730 H CHINA. Peking very loud 1335 11/19 and equally loud from (B)2045 11/27
 T JAPAN. JOCK Nagoya NHK NX 1200 11/10, no stn. ID; China pips under
- 735 T KOREA, NORTH. Noted fair 1345 11/10, and //635 2000 11/10
 H MACAU. Vila Verde. "Compressed" by Chinese signals. Language here is CC;
 "What a Friend We Have in Jesus" 0015 11/14 (theme to pgm in CC)
- 740 T KOREA, SOUTH. HLKG Taegu? The good book says HLKG but the tape sounds like
 HLKD. JORR ID under at 2000 s/on 11/10. S/on tape is of erratic speed.
 I UNID TT 1815 11/22
- 750 H TAIWAN. Taipei fair in car days, E side of Hong Kong island. The jamming
 on here is audible throughout Asia
- 760 T JAPAN. JOGK Kumamoto w/NHK-1 and CC under, 1350 11/10
- 765a I INDONESIA. Denpasar? On from 0100-0300 11/24; s/off 1700 11/22.
- 780 I UNID Australian, I think, 1705 11/22
- 790 T KOREA, SOUTH. HLKJ Seoul fair 1355 11/10
 I SINGAPORE. Loud ID 1200 11/23 and EE NX 1540. In (S)noted them with voice
 track of YL 0430 11/26 accidentally played at double speed, then corrected.
 B Heard "quarter to 12" at 1615, then Andy Wms; s/off 1630 with anthem, with
 programming to resume at "6:01" (LT).
- 800 H CHINA. (Unk.) EE lessons 1355 11/19.
 I USSR. Dushanbe (?) Moscow Bells 1700 & 1800 11/22
 B UNID. Loud OC over Russian 2110 11/27
- 810 H CHINA. CC very loud 2115 11/12: FROM (B), good 1616 11/26
- 820a B BANGLADESH. EE nx 1705-1710 11/26; then native mx; carrier off 1730
- 830 B JAPAN. JOBB Osaka weak 2040 11/27; Chinese on top by 1055
- 835 H CHINA. Pips, ID 1200 11/19, strong.. From (B)OC popped on while listening
 to JOBB 2040 11/27. On RS by 2105.
- 840 H CHINA. As loud as Hong Kong-850,1015 11/13
 B INDIA. Vijayawada noted //860-720-940, all fair, 1920 11/27

26
 840 B MALAYSIA. Kota Bahru //860 1705 11/26
 850 B CHINA. Opera 1640 11/26 and again 2035 11/27, //660. At 2115 11/26, it was //830.
 875 T UNID, //850 2020 11/10, probably CC
 880 H CHINA. EE 1345 11/19, just reading, //890
 - CHINA? Very strong jamming noted throughout Asia
 880a I UNID. PHILIPPINES? "Radio Vegas" ID 1045 11/23, then talk about Rosary march.
 885 B MALAYSIA? Bert Kaempfert music 1655 11/26. 50 min. before this, CC heard.
 890 I FIJI? EE religious pgm 1045 11/23
 I AUSTRALIA. UNID, W.A. w/ABC nx 1100; then they say "quarter past 7" and "ABC in Western Australia" at 1115. W.A. should be on summer time
 898a H CHINA. ID on the jamming here ---

CHINA - same pgm 1200 11/19:

920 weak w/UNID QRM 960 Loud, distorted; floating oscillator
 930 high pitched; QRM on air 970 Distorted
 *940 good, but floating oscillator *980 pinched w/treble boost
 950 Fair *990 weak under 2 hets

*These 3 also // 1245.

The same pgm also on 1000 (muddy); 1150 (loud, distorted); 1220 (good); 1230 (weak w/het), 1290 (weak), 1320 (loud, muddy off-air pickup, perhaps of 940).

900 H MACAU. Barely audible in HK days (good on FM-98 though) due to at least two Chinese within 2-3kc. Most often in PP w/US pops.
 I UNID. Heard "up to the minute nx" in EE 1830 11/22
 920 B CHINA. Morning wake-up exercise-to-music-and-counting pgm 2110 11/27, //590-1000
 B THAILAND. Bangkok HSK-9 ID for AM +SW xmters + FM-97. EE 2330-0130 daily, with s/off in Thai & EE; then anthem; then immediate carrier cut. EE pgm annod as returning 0415.
 B CHINA. S/on to outlet noted above was 2055 w/"Internationale"
 940 S MALAYSIA. Johore Bahru. EE nx 1350; tx pips, ID 1400; more EE nx; 11/24
 H CHINA. Hofei, Anwei regional. EE lessons, rhetoric 1320 11/19; CC 1330
 B Noted over India 2055 11/27
 950 H CHINA. Unk., semi-local days in HK. (Too strong for Fukien?)
 B CHINA, UNID. "Internationale" s/on 2055 11/27
 955 H BURMA. Rangoon. Presumably this was it w/Peggy Lee, and EE announcements relating to anniversaries, 1527 11/19. (Not noted in Bangkok).
 960a I UNID. Pop mx 1833 11/22
 970 H CHINA. UNID, semi-local in Hong Kong days
 H CHINA. EE/CC alternating 1335 11/19
 990 B UNID TT 2057 11/27
 1000 T CHINA. Peking L&C 2030 11/10; from (I), fair 1135 11/23
 H PHILIPPINES. DWSS Manila, "Double S." Andy Williams, Vikki Carr, Perry Como noted thru 1537 11/19
 1010 H CHINA, unk. CC 0215 11/18
 B INDIA. Sounded like this, 1950 11/27. Only 10kw, so maybe not.
 H PHILIPPINES. DXXX Zamboanga City - most consistent RP signal here and in Bali. "D-triple-X at double-10." Soap opera 0915 11/13; Lifebuoy & Bic spots; whiskey spot 1000 folo by Rosary, and Marcos taped speech 1007. On 11/19, "Blue Xmas" Jerry Vale 2050. Often, teletalk show 1030. REN, I "Hard Core Hits" (syndicated on 100 stns, they say) 1135 11/23. "Face-setter in relevant programming." Very loud in Bali.
 B UNID. Anthem & 2-tone time signal 2100 11/27
 1015 B UNID. Far eastern of some sorts, not CC 2120 11/27
 1020 I UNID Indonesian w/off center moog cut of "Rose Garden" 1135, 11/23
 1050 I PHILIPPINES. UNID Filipino 1834 11/22
 1060 H CHINA. Canton, Kwangtung loud, cuts into HK-1050 days

1075 H THAILAND. Bangkok s/on 2100 11/27. Image on about 1530.
 1080 H CHINA? Jamming - peripheral for Taiwan 1100 I guess
 1090 H CHINA? Jamming - same as above
 1100 - TAIWAN. Taipei. Rarely heard; jamming good throughout Asia
 1110 - CHINA. More jamming
 1110a I INDONESIA. UNID 1155 11/23
 1130 H PHILIPPINES. UNID, easy listening, "Rose Garden" GV, Ferrante & Teicher piano, "Radio gets to you" jingle, 1035 11/13; Rosary pgm 1143. Het from China. From (I) heard Ray Conniff cut 1831 11/22. Program called "Overnight." Philippines mentioned in PSA. Presume DZHP Manila
 1140 H PHILIPPINES. Poro VOA good 1300 11/19 w/"Yankee Doodle"
 1150 H UNID CC very loud 1045 11/13
 1160 T UNID Russian noted 2030 11/10
 1178 H JAPAN/Okinawa. Jamming on or around it most of time; unreadable 1320 11/19. From (I) loud 1205 11/23
 1196a I INDONESIA. UNID 1155 11/23
 1200 H MACAU. Not heard at any time in HK, and not in Macau during visit 2pm IIT. In both places, there appears to be a CC about 1200 and an OC about 1196 at all times.
 1206 I INDONESIA. RRI Surabaya presumably the semilocal noted in Bali
 1210 T JAPAN/CHINA. JOOR & CC even 1345 11/10
 1220 H CHINA UNID CC here days; weak
 H UNID EE nx, American voice, 1007 11/14. Sounded like AFN outlet
 1230 H CHINA. EE/CC lessons 1407 11/19
 H UNID, US rock 1630 11/14
 1250 H HONG KONG. BFBS, Sek Kong, New Territories. On erratically, //FM 95.5. Horizontal antenna; QRM from 850/1050 image. Some EE pgm 1000-1100, then Gurkha programming; off 1300
 1260 H PHILIPPINES. DWWW w/teletalk 1045 11/13, w/guest; on tape now it sounds like a sporting event. Live mx, Philips TV ad 1015 11/14. ID 1415 11/19. ID as "Super Radio 1-2-8" 1557 11/19. Chinese QRM occasionally
 1250 T USSR. Vladivostok, Moscow bells 1359 11/10, seemingly off 1400
 1320 H PHILIPPINES, UNID 1645 11/14
 1334 I INDONESIA. RRI Jakarta, fair evenings
 1340 H CHINA. Kwangtung regional/FS. Good days. FS for Philippines 1220 11/19, folo by OC, chimes, unk language, off SW; UNID Filipino under. The 1200-1230 pgm appeared to be repeated 1430. Gave Peking address in Tagalog. Loud & distorted. "Internationale" thru 1456; 2SW freqs & 1340 mentioned.
 1410 H UNID Aussie or British voice w/rock under CC 1425 11/19. CC & its het off 1428. EE pgm mentioned 4 other SW freqs. (Probably below)
 B OMAN. Masirah Is. Must be the one here w/British EE. skiing discussion 1928 11/27; Elvis discussion; stocks news; rock. "BBC World Service" ID
 1475 H INDONESIA. Kota Kinabalu strong eves, but muddy. "Syncopated Clock" 1127, "Exodus" 1130 11/13. Billy Graham address tape in HK week of 11/10 noted 1407 11/19. EE lessons 1508 11/19 w/US male, Indo YL: Unid. tbone solo seemingly on carrier 11/19. Wacky crystal squeal noted.
 1480 H THAILAND? Chieng Mai? Appears to be this in 1475 slop. EE lessons with sweet young American YL 1405 11/19
 1520 H CHINA. UNID. CC, pips, more CC 1500 11/19
 B THAILAND. Bangkok. Station 20, "thini song soon" ID 1500 at end of FF pgm. S/off w/anthem 1600.
 1525 H CHINA. Came on w/ "Govorit Peking" (alternating man/woman) and "Internationale" (chimes & orch.) while I was taping 1520 (above) 1500 11/19. From (B), "Internationale" chim-s/orch. into RR 2000 11/27
 H UNID. RR 1107 11/13 (missed 1100 ID)
 1545a I INDONESIA. Seemed to be here 1400 11/23
 1550 I AUSTRALIA 4QD Emerald. Time "9pm" then into ABC nx 1400 11/23
 I INDONESIA. Seemed to be one here under 4QD -- on frequency (no het)
 H TAIWAN. AFNT nx, PSA, wx 1103 11/13; good 1630 11/14.

- *1550 H USSR. Moscow bells and "Govorit Sikkim" 2100 11/12. On a tape of 1525k later in the month, I also thought "Govorit Peking" sounded like "Govorit Sikkim."
 1560 I UNID. There appears to be some jamming here, very low and practically obscene. Perhaps for Portuguese Timor (which I didn't hear)
 1570 H KOREA, SOUTH. HLDA Cheju FEBC ID 1330 11/10; religious pgmg, in KK. From (H); end of drama 1359 11/19; ID 1545 11/19 thru RFA peripheral jamming
 1580 H THAILAND. RFA jammed 1057 11/13, ID 1100; EE nx. EE astrological discussion 1455 11/19. From (I) fair in EE 11/23 at 1150. IDs as "Voice of Free Asia"
 1590 - UNID. Appears to be some jamming here, too for RFA.

JAMMING. The following frequencies appear to be jammed at one time or another:

585	750	1178	1300
600	880	1210	1310
625	1080	1240	1560
650	1090	1250	1570
655	1100	1260	1580
690	1110	1270	1590
710			

Some are rather obvious; all the 1500s could be to detract from 1580 listening, and the 1080-1110 could be for 1100.

In addition, the Chinese appear to be attempting to deter mainland listening to Hong Kong 610-640-850 and Macau 735-900-1200 by constructing transmitters near these areas simply for purposes of interference and putting them on frequencies 2 or 3 khz off, either modulated or unmodulated. There is no actual jamming per se.

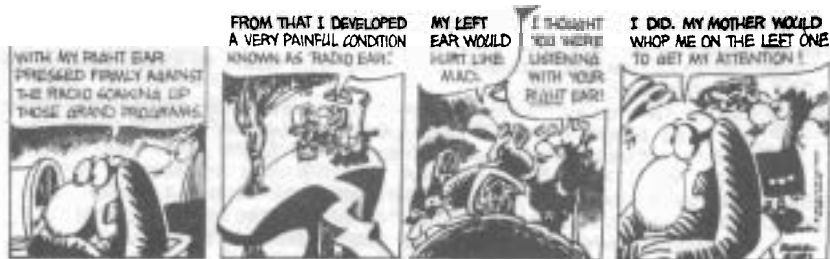
SUMMARY

Some of the frequencies may be slightly off. Above 1200, the dial was rather tight, and when no reference signal was available, I had to guess. I am sorry I was able to do virtually nothing with the Thai stations; they were too close, and there were too many. I was in Hong Kong 11 nights, Bali & Singapore 2 each, and Bangkok 3, and with normal touring, you can't spend all your time at the dials. I visited Radio Hong Kong (RHK-1 is 640, -2 its FM; RHK-3 is 545, its FM -4) and Commercial Radio, but didn't have time to hit Radio Singapore or Radio Thailand.

It was fun and I hope some of the information is useful. Any information on some of the mysteries, particularly 680, would be appreciated.

*IN RETROSPECT I THINK THIS WAS ACTUALLY 1525 AND "GOVORIT PEKING." THERE WAS NOTHING ELSE ON THE DIAL FROM ABOUT 1400 ON UP AND TUNING ON THE PORTABLE IS SOMEWHAT ILL-DEFINED UP THERE. ALSO, "MOSCOW BELLS" SHOULD BE "KREMLIN BELLS." - PVT

BROOM-HILDA



via Brian Vernon

editor: Ernest R. Cooper

5 Anthony St.

Provincetown, MA. 02657

musings of the members

The opinions expressed in this column are those of the individual members, and do not necessarily reflect those of the editors, the publishers, or the National Radio Club.

HARRY HELMS - 115 West LeRoy Street - Fort Mill, South Carolina - 29715
 Greetings. The super low band TA CX of late October have yet to be repeated here, just the common high band stuff. Highlights since last Muse: 11/3- KNUJ-860 TEST at poor to fair level, old style records, good CW ID @ 1:24am. I called them & they mentioned my call @ 1:30. No verie yet, but I have a verie from them for their FM station, heard here last May! That same morning, KGMO-1550 & KQYX-1560 wiping out those channels w/ETs around 2 & seemed to be on most of the morning. KORL-650 back again @ 3, this is getting to be a pest, hi. 11/10- I had Austria-1475 at poor level 12:12am, weak unID SS-854 12:31am, onward, maybe one minute of audio out of five listening, loop says maybe needed Peru. I'll get this one yet, I hope. 11/12 was domesticated w/WATV-900 atop 5:44pm w/s/off routine, KFAL-900 left w/"Today in History" thing, "clear channel radio" promo till lost @ 5:49. (Clear channel & lost, that's rich! -ERC) KOAM-860 atop nicely @ 5:57 w/a super Oldie "Beyond the Waterfall" by Slim Whitman!, then NBC NX. 12/1- What have I heard? UNID UNID-1600 w/WGIV looped @ 6:03pm, ending "Ventura Hiway" by America, spot for a jewelry store in Natchez, then 6:05 s/off mentioning a 93.5 FM station & Keridfan, none of which makes sense, as Natchez & Meridian are at opposite ends of the state, & I can't fine a 93.5 FM listed for either city in my latest FM Atlas. New station or do my ears need cleaning? Tom Holmes, ex-Club Treasurer & BPCer, managed to find my place but I wasn't in, alas. A quick phone call to Charlotte confirms he is still alive & interested in DX, & I'm looking forward to having DX & gab sessions with him in the future. All the best of the Season to NRCers, their families, & friends, & much good DX in the coming year. 73.
 (Harry, Ferriday, La. has an FM on 93.5, just a smidgeon from Natchez-ERC)

DAVE SCHMIDT - 42 Chelwynne Road - Castle Hills - New Castle, Del. 19720
 Off with another exciting DX adventure in Musings! To DX: 11/30- WAVS-1190 5:24-5:30pm ending NX, then s/off, in clear; heard in the past, reported this time. 12/1- KSTT-1170 1:07-1:21am w/r. WWVA was off, first time heard since the 60s. 12/5- Another Pa. station for a report, WJUN-1220 4:29-4:43pm before WGAR took over, w/Mutual NX, then sports. WETB-790 4:58-5:14pm w/Mutual NX, "Leonard's Losers", then s/off in clear. 12/8- DX TESTS from WNRI-1380 & WMTY-1090 both taken for reports, WNRI a little rough but got stronger as TEST went on. WMTY was alone w/CKKW nulled. WIVV-1280 heard but recently heard @ SSS. WLLL-930 not noted. While Ben Dangerfield's friends, WEEZ, are running 250w non-DA at night, they are getting many reports from WQQW's area following their s/off. Very good reports recently received from Dailey, Aruda, & Stiles, all verified. We also recently received one from a Conn. NRC member who just sent in a very poor report after hearing WEEZ back in 1972, three years ago! The report was for s/on, very lacking in details & was for only two minutes. That report was not verified, no doubt. There were also a few gems from new NRC members who weren't in the Club when their reports were sent, a few of them would be good auction items, hi! Here's a special offer, another goodie from Youngstown which was recently located in my harvest of junk. First person to write gets a full 4 1/2 x 3 1/2" picture of the WHCT studios w/a good wish note from Jerry Starr written on the back. It's a collector's item. Antcoer antique added, a Philco Model 90, cabinet in perfect condition & in working order. Only tunes to 1500 & needs an LW to hear anything other than the locals here. I was hoping that CX that were when this set was made would still be holding on, but that's just a piece of reading material to me, hi! Veries: WVMA-1590 & WANS-1280, both v/l's w/CMS, WANS mentioning only 3,780w into a 3/8ths wave tower. 73s.

BRETT HANNAHAN - 845 First Avenue - Chula Vista, California - 92011
 Greetings from the WC. This season is shaping up pretty well. Since 9/1, a total of 53 new stations have been logged. More recent DX: 11/1- KSVN-730, 7:15pm s/off. 11/9- KAIM-870, 4:45am, w/cl mx. KRAI-550, 11:49pm, w/WX, ba rely broke through KOY. 11/10- KYVA-1230, 7:30am, time given in EE, then into Navajo program, w/mention of KYVA & Navajoland. KVOR-1300, 8:05am, coming out of CBS NX. 11/11- KMED-1440, 3:05am w/NBC NX, then into s/off. 11/17- KSD-550, 6:42am, up just long enough to hear announcer say "KSD NX," w/KOY. JOUB-770, 7:24am, w/KOB nulled; local KFME off. JOGB-870, 7:50AM, SUPER-STRONG, C/WWL & unID jazz. KSKY-660, 8:05am, came out of nowhere in the middle of a NX-cast, then PSA for Safe Boating; full ID, "This is K-S-K-Y in Dallas, Texas, the Voice of the Gospel for the Great Southwest, 6-6-0 on your radio." Then into religion. 11/27- KVEN-1450, 4:05am, coming out of Mutual NX & into Herb Jepko's Mitecap Show. KBIF-900, 7:28pm, w/religion then full ID & SID, ADEBO sloop nulled. KCIN-1590, 7:43pm, w/prayer statement, then into s/off @ 7:45 mixing w/KBBQ & KLIV. 11/28- KYGA-1490, 1:15am w/Arizona "ilcoat FB game. KMP5-1300, 1:50am, for call change. Totals now 490 heard in 36 states & five provinces. Only one recent verie in, a v/q from KDWN. 73s.

JOHN T. ARTHUR - Box 42 - Bridgeville, California - 95266

CX have been poor lately, with sporadic QRM popping up to bury IDs (somebody's timing seems good!) I've only managed three MMs in the last two months, with fair results. 12/8- 1:03am EST HJCY s/on one minute after KGO cut carrier, KGMO was on for test & GHQR was way under. (Sounds like PST, no? -ERC) CJIB-940 in @ 2:26 w/rr, weak but on top of an unID & a het. Daytime DX same day netted KEQY-730 w/rr @ 5:55pm, very choppy. KSPD-790 made it w/NNIS & ID as "NX Radio 79" @ 6:25 & KBRJ-950 came through weakly @ 6:40 w/c/w. KMOX heard u/KFNW w/CBS NX @ 6:54. KNAK-1280 heard @ 7:01pm w/NX, way o/KJOY/KFCX. This MM was very disappointing w/no TP signals noted at all & only a few LAs. RX: Hallcrafters SX-43. Antenna: 240' LW running SE/NW. Note: I no longer need a manual on the BC-1004C as it was destroyed by vandals 10/28. (They only did \$1,500 damage altogether!) I have a few unIDs in case anyone can help: 10/27- I had two signals on 660 @ 7:35am, one c/w & the other religious. Same day, cl mx on 1550 u/KKHI/KRGO @ 10:22am. 11/3 @ 1:05am, I had lk TT on 1590 u/KLIV/KBBQ w/very weak signal. Also, who IDs as "The Big X" on 1210 - WKNX? 'Twas @ 5:45am u/WCAU. Finally, TT on 740 @ 4:27am on 11/3, heard weakly u/KCBS OC. Any ideas? Reports out to KRGO, KXLF, KDUN, KCMO, KSPD & KCNO. V/ls in from KCVR (four days) KIQS (36 days), KGMO (917 days). V/q from KBND in seven days, & a Bullsheat from KGFX in seven. Thanks to my coffeepot for getting me through these MM sessions! 73 & good DX.

HANK WILKINSON - 16633 S.E. Ninth Street - Bellevue, Washington 98008

I have been in this area since 11/20 & I have been able to DX for the past several MMs, but I haven't heard anything very exciting except for some TP DX on the morning of 11/24. KORL-650, was coming in with more volume than usual so I was fortunate to hear Fiji on 640k (KFI was off) & 2YC in Wellington, New Zealand on 660 w/good volume. I have not heard any Asians at this location. I just received a fine definite verie from the Director-General of "Radio Malaysia" verifying my report on their station in Kuala Lumpur, 885k, on 11/3/74. He enclosed a fine assortment of his country's stamps - country #69 for me on the BCB. I have been DXing for foreign stations (other than Canada & Mexico) off & on for 44 years & I still get that wonderful feeling of accomplishment every time I hear a new station & lucky enough to find a verie card or letter in my mail box. The DX Hobby has been a wonderful part of my life & I am glad to have been a small part of it. A very Merry Christmas and the best New Year ever to everyone.

NORMAN MAGUIRE - 2874 Kalakaua Avenue - Apt. 703 - Honolulu, Hawaii 96815

Continuing from last issue, we stopped back in Invercargill & picked up Eric McIntosh & equipment & headed for "The Rocks" S of Riverton. We stopped at a Merv's cottage for something to eat and

(Maguire) & then to The Rocks, located at southernmost point, just N of automatic lighthouse atop sand dunes. Eric brought up Merv's RX & his SPR-4 & the batteries. Some of the LWS were down, but we did hook up to two antennas. I was noisy - nosier than Sutton's. However, I would love to find it that quiet in Honolulu, hi! We again listened to U.S. stations w/excellent volume, plus Cook Islands, WKLE, WVUV & other top Pacific catches. At Christchurch, Ken Mackay & wife took me about. I also saw Ken's wonderful verie collection. On to Melbourne where Art had arranged for me to meet Harry Weatherley who took charge. He is a top DXer, both BCB & SW. I saw & listened to his fine equipment including his Barlow-Wadley RX. The following day, he arrangee for me to be interviewed over R. Australia by Keith Glover. In Sydney, Chris Martin called me as I arrived at my hotel. Jack Buckley from Coogee took me to all the southern beaches. We all had dinner at the Buckleys. The next day, after taking the hydrofoil to Manly, Jack joined me & we drove to Chris Martin's home at Harbord. We listened a bit there & drove up the Coast. DX was fine from my hotel room on a little Sanyo transistor I bought in Melbourne. I felt at home at Jack Buckley's w/his HQ-180. Chris had a Trio RX. I toured Wandi, Lautoka, BA area on Fiji. Most of their XRs are automated from studios in Nandi or Suva. I took a Yasawa Island cruise & DXed from the boat - fine reception. I did not see any stations while in Suva. I had a wonderful time, thanks to all the most hospitable DXers & their wives. I hope to get back "Down Under" soon again.

ALAN MERRIMAN - Box 6 - Fairfax, Virginia - 22030

Greetings. Well, ERC asked for it, so here is a Musing. Reason for my lack of support is that DXing sessions have been few and far between. Here is what I do have - first the veries that have come in over the last six months: HJQZ-1580, TISHRH-1125, GRL-1165, Jumbo-1150, CHTN, WFSP, WNNO, WPUT, WBFN, WEWO, KWKY, WMIC, WONA, WSNW, WEAG, & WEEO. Here is DX: 6/2- CHTN-1190 finally good enough for a log. 11/10 - (That's right - no DX for five months!) WSNW-1150 generally poor on TEST - I finally got the last five minutes. WAGL-1560 a powerhouse 1:35, unnn. WEAG-1470 very tentative reception @ 2:27, I sent tape & verie says definitely them. TT heard on 1050 during WLYC's sked time 2:30-2:45 but no IDs. 11/23- WEOC-940 @ 12:01pm, third try for a verie & this time I scored. 12/1- WTBJ/KWIP tried but not heard, I doubt if former was on, & KWIP would have been a minor miracle! 12/8- Umm WORG-1580 ET/M, ID @ 12:15, strong. CHNR-1600 to s/off @ 1:06:30. WLLL-930 not heard, doubt if they were on. CKKW-1090 good @ 1:39. WIVY-1280 generally dominant 2:29-2:50, sounded like RS, no mention of TEST. WNRI-1380, @ 3, CW IDs in like Gangbusters but rest rough u/QRM including WTB also testing. WMTY-1090 @ 3:32, playing exactly the same songs heard earlier on CKKW as I logged them for a report! And that's it for the DX from this location. A couple of freebies - I have two WFSP-1560 CMs. They might be rare as this one is not a good verifier - first two SASEs get 'em. I will try to be more regular in the future - maybe Ex-Lax will help. 73. (Do you have a radio in there, Alan? -ERC)

DICK TRUAX - 3003 Gleason Lane - Jaffersontown, Kentucky - 40299

Time for the latest DX (meager as they are) from the Bluegrass State & Home of the 1975 NRC Convention. Latest addition ~~was~~ is a near mint HQ-180 just acquired. And if fate continues on its present course, I will soon also have an HQ-180A. After months of searching without luck, now two turn up! If the HQ-180A deal comes through, I'll have a near new HQ-180 for sale to any member wanting to update his equipment. More on this later. DX: 11/30- WPHM-1380 Mich. w/PSA & ID @ 8:46pm all alone, WFBL-1390 N.Y. w/mx & ID @ 8:53pm. MM 12/1- KHOS-940 Ariz. w/ID & ERC mx @ 2:48am for best-ever signal on this peanut whistle! 12/6- KOKA-1550 La. w/ID & R&B @ 6:12pm on decidedly Auroral evening; KWHN-1320 Ark. end of BKB game @ ID @ 10:55pm, then AGN NX. MM 12/8- WNAX-570 S.D. w/ID @ 2am, I don't know if on ET or RS as not heard after ID. WIVY-1280 Fla. on TEST w/nice signal @ 2:36am w/NX & ID, then mx-evidently RS on FM affiliate. WRI-1380 R.I. @ 3am & 3:04 w/code IDs u/WLYC & unID TT, decent voice ID & code ID @ 3:13 for state #43, WMTY-1090 TEST @ 3:39 w/ID & mx very strong. No sign of WLLL-930 if on. CKAP-580 Ont. ID @ 4:05 after 20 minutes of mx. I hope everyone has a nice HOLIDAY & DX.

MARK CONNELLY - 47 Lakewood Drive - Sudbury, Massachusetts - 01776

I've decided it's somewhat redundant to report the same catches in both IDXD & Musings unless there is more to be said about the catch than can be accommodated within the IDXD format; therefore my Musings will be primarily "gab." I'm renting a house in Sudbury until next Summer when I'll be getting married & probably moving into an apartment. Then, my parents' place in West Yarmouth, Mass. will become the location of my serious DXing w/the R390A on a once-a-month or so basis. Of course DXing from the car & with the recently acquired TRF '76 portable will still occur regularly. The W. Yarmouth site has worse line noise than Sudbury & much less antenna space, but its coastal proximity more than compensates. LA reception is exceptional. About the TRF, good clear split reception is obtainable with the split is not more than 10db weaker than adjacent stations & is at least 3k away from them. Over the last few months, using no external antennas, the TRF has picked up from Sudbury: St. Kitts-555; England-647; Portugal-665; Surinam-725; Senegal-764; Andorra/Morocco-818; Costa Rica-825; Belize-834; Italy-845; Montserrat-885; W. Germany-1016; Haiti-1035; Antigua-1165; N. Germany-1196; England/Albania-1214; St. Kitts-1265; St. Pierre-1375; France-1376; Albania-1376; Monaco-1466; France-1554, & W. Germany-1586. Some of these receptions were from the Sudbury River "superlocation" near Route 27, but most were at the house, just an average location. Best time w/TRF is SSS before stations to they get strong. DX NEWS reports from close to the two QTHs I use are helpful - data from Gordon Nelson & Curtis Engberg tell accurately what I can expect to hear in Sudbury & Mark DeLorenzo's receptions (more LA-oriented) are basically similar to what I get in West Yarmouth. Info from my visits to W.Y. Thanksgiving & around Christmas are being sent to IDXD separately from Sudbury DX as there is a significant difference between the two sites. Many thanks to Bo Nensen for his report on TA DX in Sweden - it seems there is much "over-the-pole Auroral Doughnut-hole" propagation thereabouts. Dario Monferini's Euro-DX reportage also interesting. I hope TA CX improve over the rather dismal late Nov. showings. One domestic note: Two phone calls to the right place got rid of bad WILD-1090 spurs on 1010 & 1170 within 24 hours. 73 and Merry Christmas to all. (The "right place" was the FCC in Belfast, Maine)

STAN MORSS - Route 3 - Bradford, Massachusetts - 01830

11/24- WMMT-1520 TEST easy w/no WKBW. 11/26- CHNR-1600 5:30 pm o/u WUNR for another try for a verie. 12/1- CKRV-1400 Drummondville, Que. for a report on AN show. 12/8- WMTY 1090 o/u CKKW. 12/9- KKA-1560 Aberdeen, S.D. at noise level 5-5:45am for a report. WYY-1580 to 5:45pm s/off tape & report sent. 12/10- WNYG-1440 4:30pm but way u/WAAB so not enough for a report. WREX reported to s/off, plenty of WCKY 3RM. 12/11- Weak s/off on 1600 seemed to be WACX but too much WUNR. The "WA" of s/off was clear & I heard "1,000w" mentioned but replay of tape did not help any. V/PP/c from WWC, now WPCE-1400 - if you have an outstanding report for WWC sent it to the new address for WPCE, 1010 Park Ave., Norfolk Va. Keeps my record of 1400 WLOW-WHIE-WWOC 100% - now for a try at WPCE.

ERIC FADER - 23-35 Bell Boulevard - Bayside, New York - 11360

Hi everybody. This Muse is going to be a real quickie. CX have been very Auroral & poor - the two aren't necessarily connected in my mind, but that's how it's been. One DX session this month was 12/3, with all kinds of LA activity on 680-690. On 680, R. Cumana-Laraacai-bo, R. Nacional-Zambrano, R. Fidel-Havana (hi), & WAPA were all fighting it out amidst noise. I believe the Cubans were //690. The others were IDed and/or surmised - WAPA was easily IDed. 690, R. Barquisimeto, I believe IDing as such. Also the Cuban, strangely weak & saying "Ecuador, Ecuador" which fooled me completely. XETRA may have been way under all this - there was something there definitely. CBF began fading in about 11pm so I gave up - all this was about 10:25 & up. Also, I noted an LA on 1070 too weak to ID, likely HJ. By the way - someone on 1420 has "Nitecap" & I've also heard it on 1450 - that does it, I hope CX improve before I go away. 73s. (Where ya goin', Eric? -ERC)
AS THEY SAY IN McCOMB, MISS. "WHNY." "WISHING HAPPY NEW YEAR."

BRUCE BOOMER - 108 Norma Avenue - Nutter Fort, West Virginia - 26301

Greetings. CX have been back to normal the past two weeks. Most of this Muse will cover one strange day, 11/29. First, the SSS was coming from the W: 5:17pm, WKKS-1570, Vanceburg, Ky. w/s/off. 5:27, WORX-1270, Madison, Ind. s/off. 5:40, WKAM-1460, Goshen, Ind. w/rr. Then all of a sudden the high band TAs started rolling in on 1466, 1554, & 1586, all strong. I heard for the first time Austria-1475 @ 5:54pm & Switzerland-1562 @ 6:05. Gradually Switzerland became weaker & Cuba-1560 grew stronger & by 6:10 no TAs were heard. ZNS-1540 was strong at 6:35pm & the band was filled with SS stations. WKWF-1600, Key West, caught @ 7pm w/ID & CBS NX. The remaining highlight of the night was an opening to New England: 11:26pm WTSN-1270 Dover, N.H. was in w/rr. Then on 11/30 12:30am, WABI-910, Bangor, Me. was u/CBO w/SID & c/w - Maine #1 but not enough for a report. Other than that, I logged 40 new stations @ SSS the past two weeks, mostly from nearby states. Veries: v/q- WTSN. V/1- Carib. Radio Lighthouse Antigua, from Box 1057, & R. Anguilla. DX NEWS has been especially interesting & valuable this Fall & I would like to thank and congratulate the Editors & NJPC for the fine job. Happy Holiday Wishes and 73 to all!

JOHN SAMPSON - 52 Delwick Lane - New Providence, New Jersey - 07974

Hi all - shame on me for not Musing for a couple of years but I haven't been DXing (due to a broken radio last year & no time this year). I have noted a couple of recent comments concerning Caribbean DX. We were on a cruise down there about nine months ago & I thought I'd throw in some things I can remember. First, no sign of St. Vincent-705. We sailed quite close by the island during the day so if they'd been on I think I would have heard them. We stopped at Port-of-Spain for a visit - I don't remember what 610 did use as a slogan, but I remember they did NOT use R. Guardian. R. Antilles was the strongest station on the dial (except for locals at various ports) SE of Montserrat, but fell off considerably NW. During the day, the 740 outlet was //930 also, or at any rate during the random times I listened. Congrats to Ron S. for hearing that one. ORTF-1310 Martinique was another powerhouse SE of the island, but also must be directional as they were inaudible on my portable by the time we got to St. Croix. Although we had a two-hour tour of Martinique, I guess we didn't go anywhere near their XR, as I didn't spot anything which looked likely. Other tidbits - ORTF, Guadeloupe indeed exists on 1420; I tried to hear ORTF-Guyana circa 1070 but I guess we weren't close enough - while docked in Trinidad, so no go. Strongest Puerto Rican in the SE Caribbean is WRAI-1520 w/WIVV next. Another which made me drool was R. St. Lucia-660 (I didn't hear the 1565k outlet listed in an old WRTVH). Seems like the 660 outlet should be audible in the SE U.S. also. Anyhow, the trip & DX was most interesting. Other random comments - I enjoyed the Convention at Hartford - thanks Ron & Frank for a job well done. Belated Merry Christmas, etc. to all & 73.

J.A. WORCESTER - R. D. #1 - Frankfort, New York - 13340

Hi out there! It has been just one month since my RX article appeared in DX NEWS & four of the six RXes available for this DX season have been sold. Allowing for the time to get this in print, there is a possibility that the remaining two may be gone by then. Accordingly I would suggest anyone still desiring to purchase one of these during the current season write me first to make sure one is available before undergoing the trauma of placing an \$800 check in the mail. Holiday wishes to all.

TONY LAGATTUTA - Box 6291 - Portsmouth, Virginia - 23703

Greetings. WDEL-1150 clear @ noon 12/9 nearly as good as WJWL-900. WHIO-1290 clear @ 6:05pm. WXYZ-1270 clear @ 6 @6. WBBZ-1360 topping channel often between 6:26 & 7:10pm. WGH-1360 ID only @ 7. WNRJ-1430 clear at times around 10pm. 12/10- WFBC-1330 fair-clear 10:14pm. During coming lay-off at work, I'd like to phone each local station, inquiring as to silent period, & possible verie signer & include this info in a Musing in this column. Report out to WBBZ-1360. Best DX to all till next report.

AS THEY SAY IN BOGOTA, COLOMBIA: "HJCN" - "HAVE a JOYOUS CHRISTMAS & NEW YEAR!"

WAYNE MURPHY - 1411 Phyllis Avenue - Louisville, Kentucky - 40215

It's been a while since I've appeared in these pages due to a rather heavy school workload, but exams are over so I hope to have a "blitz" of contributions in the next two weeks. CX, while not spectacular, have enabled me to log 55 in November & 25 in December as of 12/13. I bought a timer last week & have been using it w/moderate success. I really blew it on the WNRI TEST when I left my BFO on & a loud tone blotted out 99% of the audio, even the CW IDs didn't make it through that crap. It was heard here by three others (only the CW) so it was there if I could have picked it out. I've been leaving the timer set for f/cs that are too late to stay up for but too early to get up for (between 4 & 6 usually). A big LADS welcome to new member Bob Walker of Westport. He's got a big plot of land & great location re our locals, so there may be our long-sought beverage site. Bob was the first new member obtained of our convention v/qs. They have been a great PR device w/the local stations, giving us a chance to feel them out. Most are friendly & several CES expressed interest in attending the Convention. I'd also like to thank Roger Gianinni for the free beverage wire. Everybody keep Sept. 3-6 open on their calendars. Now ERC doesn't have to ask where Louisville is any more, hi (DX NEWS, Vol. 42 #1). Season's Greetings, all.

KEVIN MOLANDER - 5555 Banff Court - Concord, California - 94521

Not much DXing done in early November due to poor CX, but CX finally picked up on 11/15. At 3am KPLY-1240 was heard w/a very weak s/off. Then a surprise @ 4:20am was WING-1410, in a null of CFCG/KERN. They had a fair-ro-good signal & played rr. At 5:25am, CHEC-1090 was heard on 1570. CHUB was off so I suppose CHEC was using their XR. Their format was rr & their signal was very strong. 11/17 brought in CFLD-1460 @ 5am which is one of my all-time best catches. Call letters & time was all that was heard. Then @ 6:02 it was CFCG-600 "R. Saskatoon" which I thought was KOGO until ID was heard. On 11/20, KBND-1110 @ 7:23 pm w/a weak signal u/KPOP. Then @ 7:53 KYNG-1420 was heard w/rr u/KSTN. On 11/21 @ 7:42am KNPT-1310 was in very strong & then seven minutes later I HEARD KPOD's s/off on the same frequency. The day after, I heard KTLI-1590 @ 7:40am. As you can see Ore. & N. Cal. were coming in great during that week. The KYME-740-TEST was heard w/a very strong signal after KCBS s/off @ 3:05. They played oldies records & gave complete IDs every five minutes & requested reports from out of state of Idaho. KPRG-610 had a rarely-heard SP on 12/1 from 5-7am. And so KRKE was heard w/a strong signal @ 5:06 giving local WX. Their signal was very strong. Then on 12/8 @ 5:04, KLEI-1130 was heard s/off. They were beating out CKWX for control of the frequency. A few veries have also straggled in recently including: KSTN-1420, KWIP-1580, WCEY-1390, KDWN-720, KVIP-540, KFTV-1360 & KIEV-870. I would like to meet more DXers, especially in this area so feel free to write. Also, I have a cassette tape recorder do anyone wishing to exchange tapes, whether it be the usual medley of IDs or 30-minute program segments, feel free to let me know. 73s.

MICHAEL ROSLOWSKI - 3 Parmly Street - Rumson, New Jersey - 07760

Hi. I have been in the NRC since 3/75. Rumson is on the Jersey Shore 1.5 miles from the ocean. I am 22 & employed in a local department store plus going to a community College. I would like to thank Mr. Cooper for sending me information on stations W6XAI & W1XBS which I found listed on an old Zenith "Magic Eye" radio dial. I would appreciate any info about this strange radio with the glowing green-orange "eye" in the middle of the dial. Mine was made in the 30's & still works & always causes comments. For DX work I use a Drake SFR-4 & SM-2 & LW to listen to both SW & BCB bands. I'm too busy for a lot of listening but heard for the first time on 12/10 @ 6:40pm, ZBVI-780, w/"it's now 20 minutes to 8 in the Virgin Isalnds" & the announcer taking telephone calls. That's it for now. 73. (Welcome to the NRC, Mike, & who's this "Mr. Cooper?" I'm Ernie, please, & Muse often! -ERC)

WE AGAIN SUGGEST TO NRCers WORKING AT RADIO STATIONS TO TRY TO ARRANGE A DX TIP & EXPLANATION MINI-PROGRAM A LA THAT ON KDWN-720. THIS WILL PROMORE DX & THE N.R.C.! IF ON ALL NIGHT, HOW ABOUT DURING THE WEE HOURS?

JOSEPH FELA - 150 Robert Place - South Plainfield, New Jersey - 07080
Recent veries are v/l's from WASR-1420, WCLN-1170, & the WVGH-740-TEST. With very little time to DX during the last six weeks, not much has been noted of late but here it is anyway: 11/17- No WVOG-600-TEST, onlu Cuba & WMT - I never heard WMT louder. 2:05am, WGAC-580 ending CBS NX I into c/w so apparently AN MMS now. 11/30- 4:59pm, WJWS -1370 s/off. 5:15, WVG-1080 w/bank ad, ID, good mx all over WTIC who was carrying an SS program. 5:30, WORL-1270 s/off in the clear. 5:32, WTLN-1520 s/off. 5:35, WTQX-1570 strong w/soul. 12/1- 3:56am, WGIV-1600 w/soul. 4, WANR-1520 very weak w/NIS w/WKBW off for a short period. WDAE-1250 @ 4:06 w/ID, TC, Osmond record, & surprisingly, in the clear. 4:13, WRMF-1060 strong w/ET/rr. 12/8- 2:35am, WIVY-1280-TEST rather garbled but there, had c/w, AM/FM IDs. 2:52, WEIC-1270 believed to be on top momentarily w/call, request line number. 2:58, Cuban jammer conspicuously absent on 1140 but only CJTR there. 3:08, WNRI-1380-TEST rough but there. 3:13 ID, though, came through way on top on both code & voice for very nice taped ID. 3:40, WMTY-1090-TEST heard with only a little difficulty. 4, WTTI-1530 ET/M. 4:07, WRAP-850 finally after all these years w/NX, SID, then probably into soul (the signal then took a quick nosedive). Totals now 1,996/1,090. 73.

JOHN S. BOWKER - 202 Wehrenberg Hall - Valparaiso, Indiana - 46383

Greetings from Valpo-rain-snow, Wind-iana! Since this is my premier Muse, I feel that some kind of introduction is in order. I am a sophomore journalism student at Valparaiso University, & I've been DXing for about eight years. I am a morning DJ turned NXcaster at the University station, WVUR, the low super-power of the Mid-West. I have logged 1,365 stations, of which I have 35 veries & eight outstanding. I am using a portable Hitachi cassette-radio set up, not exactly the best, but still efficient. The antenna, which consists of a ferrite rod, does a very good job of nulling, for the most part, Chicago. At least, well enough to make the New York biggies come in every night. I picked up two more states over Thanksgiving break, while in Jersey (see John D. of a couple of issue back). I picked up clearly WINZ-940 Miami, WKIS-740 Orlando, & WBSC Bennettsville, S.C. And, since I've been back here, WVNA Tuscumbia, Ala. has been coming in between 3 & 3:55am CST. Although KFI, KOA, & Transworld (PJB) from Bonaire come in every night, my two favoite veries come from CBK, Watrous & KCTA from Corpus Christi. DXing sure has picked up since it turned cold, but finals start on Monday, so DXing will come to a sudden halt. 73s for now.

BRETT HANAVAN - 845 First Avenue - Chula Vista, California - 92011

Merry Christmas & Happy New Year to all. Only three new loggings lately. 12/6- KGRB-900, W. Covina, Cal. @ 1:10pm w/jazz, KDEO-910 slop nullled. 12/12- HJDP-1005, Neiva, Colombia, @ 1:45am w/R. Colosal ID. Also this morn many LA carrers noted-655, 725, 825 & 1025. No audio on any of these except some SS on 1025. Totals now add up to 496 heard in 35 states. Recent veries in, a v/q from KOAM-860 after almost a year. A v/l from KIIML-1270, also after almost a year. Now I'd like to bring up the subject of local problems. San Diego has an enormous problem. Most stations here, either cause slop about 30k wide on the band, or are NSPers. KOGO-600 NSP, causes slop from 585 to 615. KFI-640, SP NM. XETRA-690, NSP, slop 655-730, AM Stereo! KFMB-760, off MM. XEMO-860, off every morn, but causes massive slop from 825 to 890. KDEO-910, off MM, slop 890-925. XEGM-950, off MM, but slop frm 935 to 970. XEPRS-the Mighty 10-90, NSP, slop from 1070 to 1120. KSDO-1130, off every morn. KCBQ-1170, off MM. KSON-1240, NSP. Mexicans on 1270, 1310, 1420, & 1470 don't give much trouble; all go off every AM. KGB-1360, NSP, slopover from 1340 to 1380. XEBG-1550, off every MM. Closest XR to me is a Mexican, believed to be XEXX-1520, 2,000W. Strongest signals are KOGO-600, 61db o/s-9, & XETRA-690, 59 o/s-9. That's it. 73s.

JERRY STARR - WHOT - Ypungstown, Ohio - 44505

Re Shaftan's KZIA "reception" - KZIA is all NX/talk and wouldn't play Eagles. KRZI is NSP so s/off eliminates this too. Sounds like an overly fertile imagination to me! 73 & good DX.

DARIO MONFERINI - Via Davanzati 8 - 20158 Milano, Italy
Ciao friends! After the big opening noted here on the last week of October unfortunately has been very poor of Yankee signals & to be sincere only WINS has had a timid show the 11/20 @ 7:20pm EST. However the scene here has been very full of Colombians & Venezuelans especially in the period 11/20-24. These are the new stations for me: YVOV-1330 @ 8pm; R. Demerara-760 @ 8:40pm. 11/16- I noted La Voz de Chile o!/R. Globo 8-8:30pm & I have a tape which testimony it is a relay for Portuguese foreign service of the Chile Radio, anyone please may confirm this? Thanks. R. Carabes-850 International w/FF 11/18 @ 8:06pm R. Sensacion-830 @ 8:35, noted often! R. Morocco-701 operating A.N.S. //--935. YVZR-1320 @ 8:15pm 11/21; R. Mil, Santo Domingo-1180 @ 9:15, quite rare in my area, program "R. Mil Avanza!" Emisora Rio Mar-1130 HJAC @ 9:30; R. Cristal-1140 HJDL @ 9:40; R. Pacifico-1030 Cali w/ter-reific signal, QSA-4 @ 10pm, a very nice surprise. HJGJ-1010 @ 10:05. A very interesting remark is the fact the 11/21 I have noted very late Colombians till 11:05pm EST so a real important opening to this area. R. Continental-930 Bogota @ 7:50pm 11/23; R. Latina Valencia-1470 new Venezuelan 8:50 11/24. A real interesting catch 12/1 @ 7:30pm on 900, A.I.R. Cuddapar w/s/on but not local ID. (Naturally this day RAI Milano-899 was in silent period. Noted from 12/4, all XRs of Emissora Nacional de Portugal operates 24 hours so you may try to hear them all! 12/7- I noted R. Gnome-1328 giving address Box 49, Abardeen, Scotland @ 7pm & last DX, R. Antilles-930 Montserrat @ 10:05pm in SS. All time EST. So bye bye for now, 73 in '76 to all of you!

DAN FLAK - 2451 Bonita Drive - Highland, California - 92346

(UPI) - Las Vegas by the Sea - Sometime last year, when nobody was looking, California gradually separated from the continent & drifted off to parts unknown. Submit loggings to IDXD! I'm sorry I do not have any DX to report, but here's my commentary. I agree with Mr. Wiseblood's idea about a California column, but it is up to us to do it. It is true that Cal. has unique DX problems. A DXer in Tennessee has over a dozen states within 500 miles. 500 miles in San Diego can get you San Francisco. There are also mountains which put your antenna 10,000' below the average terrain. However, no Cal. or Western DX column could appear in DX NEWS unless the flood (hi) of reports from this area doesn't pick up. I am just one of themany offenders (probably the worst). Special kudos to Messrs. Hansch (Wis.) & Ramirez (Tex.) who kept the 12/8 issue of DXDD from being the Eastern DXD. Yes, Capt. Glotz, there is a California, though even I find it hard to believe. You couldn't tell from those of us out here who hear no evil & fail to report it. So it is my New Year's resolution to get off my gloutimus maximus, crank up my wood-burning, steam-powered HE-40 with the hunk of bell wire antenna & report. If anyone else in California owns an AM radio, he is free to join me. That's it from the mythical storybook island of California.

KELLY ANDREWS - 819 Tipperary Drive - Greensboro, North Carolina - 27406

As every new member to the NRC, I guess the Musings are the proper place for intros. I'm just coming off an extended period of DX inactivity. I was going strong in NNRC from 1964-68 & then took an informal hiatus. Reason was mainly lack of time & rapidly deteriorating equipment. I recently ran across a Hallidrafters SX-99 at a good price, so I bought it, strung an LW & joined the NRC, realizing the errors of my younger days, hi! Imagine my amazement when the first bulletin came & I found Bruce Winkelman was also DXing from Greensboro! I thought our breed only lived under rocks & came out after dark. (No, they come out @ SSS, hi -ERC) Now I think B.W. has updated me & advised me on loop construction. Also, many thanks to Steve Bohac for getting the tuning capacitors for Tina through DXchange. I wrote him on Monday, had the capacitors by Thursday. That kind of service is rare! At current, present totals stand at 34 states & 12 countries confirmed. I don't keep track of loggings too much; if I can't report it & get a verie, I usually don't count it. Hard-headed rascal, ain't I? I'll cover some DX news & more pertinent info in the next Musing when I have more room. 73. (Welcome to the NRC, Kelly, & we will be watching for your DX doings here! -ERC)

KEN ONYSCHUK - 16771 Shea Avenue - Hazel Crest, Illinois - 60429
Season's Greetings. Total heard is now up to 614. I'll go state by state. It's a little easier. Col. #8, KREX heard u/3WE, 8:45:55pm w/EL mx, mention of BKB game w/Montrose, an opening night in N.B.A. Conn. #2, WPOP-1410. I got DX NEWS #7 in mail, read about three NIS in DXDD on 1410. Then I heard ID @ 2am. Ill. #87, 88: WKEI-1450 w/WASK looped w/EL mx on 11/23, ID @ 3:40pm. WDCN-1580 w/local NX @ 5:35 w/ID on 12/8. Ind. #33- WHEL-1570 s/off on 12/8 @ 5:30pm. La. #13- KNOE-549 heard o/u CBEF, 5:50-6pm on 12/12. N.C. #7- WKIX-850 heard w/NX @ 6:50 till KOA's MM s/on @ 6:57am on 12/1. Nev. #1- KLUC-1140-TEST in Vegas on skywave w/Mor? & WX 3:20-3:25. Okla. #14- KOLD/KTAT-1570 heard 6:10-6:30 simultaneously w/s/off on 12/3. S.D. #5- KXRB-1000-TEST in very weak @ 3:10 w/ID. Wis. #28- WTMB-1460 w/weak s/off 12/13 @ 5:30 u/KSO. Canadian #49- CBEF-540 on w/FF u/o KNOE on 12/12. Ont. #20, as of 12/15 WMIX-940 Ill. still on 5kw D-3 w/s/off @ 5:45pm, folo by WGPC s/off. Announcer mentioned 6:30 s/on. 11/28- TEST of 1170 WHLW was a washout, 45 minutes of KVCC/WVVA. Oh well, I hope you ECers did better. During telecast of Ind.-Ky. BKB of 12/15, stations noted: WVLK WIRE and WAVE. Nice to see #1 Hoosiers on Ch. 44, Chicago. NX note from George Lazarus' column in 12/9 Chicago Tribune: NIS network is now 57 stations; aim of '75 by 1/1/76, long range goal of 300 to surpass old NBC Monitor's 227. WMAQ is negotiating 3-5 year contract to carry Bill Veeck's Sox. I hear ABA BKB regularly on WOAI-1200, Denver Nuggets on KHQW-630, St. Louis Spirits on KMOX-1120, Indiana Pacers on WTBC-1070, Ky. Colonels on WHAS-840. 73 & Season's Greetings.

MIKE RAMIREZ - 5218 Roundtable - San Antonio, Texas - 78218

'Twas the night before Christmas when all through the house
Not a creature was stirring, except for my HA-600A
The veries were on the wall with great care
In hopes that the verie fairy soon would be there.
The daytime stations were all in their beds
While visions of unlimited time danced in their heads.
Strentzsch in his pajamas, and I in my cap
Had just settled down for a DX session rap.

Greetings! Welcome to the home of the would-be champs of the defunct WFL, the San Antonio Wings. A big welcome to new San Antonio member, Artie Bigley who appears to be a mighty fine DXer. We may get a new member by the name of Michael Gutierrez who is a friend of mine & Scott's. Also, I had not really decided to quit but slow down but the pace quickly sped up as I became more enthusiastic by the DX NEWS going weekly & the good CX although as of 12/14 it was 800. Getting down to DX, first of all the TESTS I heard here: 11/10- WAGL S.C. 1:32-1:58am, WEXY Fla. 3:29-3:31am, WMNT Ga. 3:21-3:41. DX starting w/first issue of DX NEWS: KLLA-1570 La. 6:12-6:15pm w/ad & s/off. The preceeding 11/15, following 11/16: WOGA-1540 Ga. 7:01 s/on, many mentions of Sylvester. MM 11/17- WJPR-1330 Miss. 3:03am, WHIB-1290 O. 3:06, WBTS-1480 Ala. r/c 3:16-3:24 was the time I listened, mx between IDs, WEXY-1520-TEST 3:29-3:31. 3:35- 3:38am, WKIG r/c. 11/18- KLPR-1140 Okla. ET, ID @ 6:26am. KCCT-1150 Tex. r/c, ID @ 6:30. WKAC-1080 Ala. 5:43-5:58pm s/off. 11/22- WSAO-1550 Miss. 7:02am s/on. 11/23- KBBB-1600 Tex. 7:01 s/on. XETOR-670 7:03 s/on. 11/24- WBCM-1440 Mich. A1 NX 1:05am. KULP-1390 Tex. 2:19 testing. WTTI-1530 Ga. testing w/rr. WCCR-1580 Ill. 3:05-3:15 r/c, 250w! WMNT-1520 Ga. 2:20 testing 7:21-3:41am. UnID-990 4:10am, would say "100 cycles, would have TT, then 50 cycles, then TT, help, please? KLEO-1480 Kans. 4:15am r/c. R. Aeropuerto-910 3:27am. WPTR 3:17. 73.

ANDY RUGG - 146 Francois - Apt. 212 - Ile des Soeurs, Quebec - H3E 1G3
Here is a brief Muse from an inactive DXer. My RX is still out of order but should be fixed soon. DX has been limited to one brief session on 11/26, when I reported CJEN-900 on a call change from CKJL. At the same time I took another report on CJLA-630. 73. (Welcome back Andy, and welcome back, CANADA! -ERC)

AFTER THE JANUARY 19, 1976, DX NEWS WE WILL NOT CARRY ANY MORE COMMENTS ON PROPOSED MERGER FEELINGS. IF YOU HAVE SOMETHING TO SAY ON THE SUBJECT, MAKE SURE YOUR WORDS ARE IN TO PROVINCETOWN BY THURS. JAN. 8, '76!

WAYNE HEINEN - 1028 Pike Drive - Colorado Springs, Colorado - 303-634-5120. Please note new address & phone. I am now Sales Manager of TV Facts of Colorado Springs, a family-type business where you work your tail off but I'm my own boss. My RX is set up in the laundry room & I have a makeshift loop on the old RBB-4. DX has been light but some reports out. 12/10 brought unusual telethon for Brownwood Humane Society on 1380 2:02-2:30am & on although no call heard, tentative to KBWD. Earlier saw KWNS-1290 on ET/Mx/rr 1:50-1:55am w/ID, then off abruptly. KSCJ-1360 w/MoR to 2:08 s/off. 12/11- WEAQ-790 running AN-rr 1:45-2. MM 12/15- KWKY-1150 very weak in pack, r/c 1:30-1:40 w/ID every minute. I noted KRY5-1360 AN-rr about 2:58. KXRB-1000 TEST in great w/c/w & lots of IDs, copied here 3:02-3:11am. I stumbled on KLUC-1140-TEST as my 12/8 DX NEWS didn't get here till 12/15 (H2, did you get my mid-Nov. address change?) Short copy 3:35-3:35, then to bed. I hope to contact Col. & Colorado Springs area DXers. Re the NRC/IRCA possible merger, to my mind the IRCA members who wish to join the NRC should, & if the IRCA wants to close up shop, then do so. As one who joined the NRC through meeting Ray Edge, a long time NRCer & publisher, I feel when the IRCA was formed they did it out of disagreement with the way the NRC was run. If they find they can't keep the kind of club running they want, I see no reason to jeopardize the NRC as it stands with any talk of merger. My hat is off to the late Ray Edge, Mr. Richard Cooper, Mr. John Callarman, Gordy Nelson & the BPC, & RJE, PT & the entire NJPC, also ERC, HMB & the gang, Foxy, Joe Brauner, Al Merriman & all the others who have kept the NRC going through both thick & thin. I must admit I haven't done too much. - Some CPC many years ago but I still feel a part of NRC & hope I will have time in the future to devote to the hobby as a whole instead of just my own personal enjoyment. Have a good Holiday Season & may Santa put a veri or two in your stocking this year. 73.

DAVE SCHMIDT - 42 Chelwynne Road - Castle Hills - New Castle, Del. 19720

DX slowed down this report, due to getting ready for Christmas. I am also getting a few problems with the line noise again, so letters & calls are going to Delmarva Power to get that straightened out again. It doesn't seem to be from their lines, though, I believe it's an "in the house" type, which may be a little tough to get corrected - meaning, it's in somebody else's, not mine, hi! 12/15- WWHY-1470 12:26-12:45am w/ET/TT, noted past 2:30, playing Bluegrass stuff by then. WTVR-1380 1:21-1:31am w/ET/c/w, some TT. WKTJ-1380 didn't show; WBNX is painfully strong here MMs w/WAMS off. WRAM-1330-TEST 2:03-2:15am w/TT, voice very weak, mostly u/WHOT. KXRB-1000-TEST 3:02-3:16 w/c/w, very rough w/FM'ing Mexican. Promo for Top 75 hits of 1975 quite clear @ 3:08 so word for word copy sent on that. I noted some c/w, some TT later on S.D. is easier to get on FM, hi! 12/17- WARD-1540 4:29-4:31pm s/off after WRCP, quite strong. I missed the WDLN-960-TEST - I looked for them on 860 (I had a long day that day, hi!), see Wes' column for the comments on that, hi. Verie: V/m WEEZ-1590, WAVS-1190. v/r- WJUN-1220, WMTY-1090 -TEST w/sticker; v/l- KSTT-1170, WETB-790, WELB-1010. Pa. veries now stand at 98, total veries around 700 now. I'm still working on the filing system for them. Foxworth's comments in the 12/15 issue regarding that proposed merger express my thoughts also. For those very same reasons I pulled out of it, its bickering over little things became just a little too much. May everyone have a good Holiday Season & let's hope 1976 brings good CX! By the way, for those seeking a verie from the illegal station on 1608 its address is WHGC, Holy Church of God & Christ, 704 12th St. NW, Charlottesville, Va. 22903 - send them to the attention of John Brown, SM. Coleman got a PP/c back from them but I was told if I wanted a verie, I had to send a tape & PP/c. For being a "carrier current" station, they must be using the whole state of Va. for an antenna!

NEIL G. ZANK -2445 "E" Street - Apt. 6 - Lincoln, Nebraska - 68510

Holiday Greetings to the NRC from the Hinterlands. I have my loop all trimmed with lights, I heard that Lindblade knows U.S. Highway 30 like the back of his hand; Wesolowski has an ace in the hole with his return trip ticket for the Nebraska City toll bridge, Whitehead is

(Zank) getting a finger stretcher for Christmas after typing the NRC Membership List, Dabelstein has to live upstairs in his new home till he gets his basement finished, & Mittler is still trying to dig out the WVOG TEST on 630! A very good year in '76 is wished to all. 73s.

JEFF KOSNETT - 1410 Chicago Avenue #205 - Evanston, Illinois - 60201

Merry Christmas & Happy New Year to the entire membership! I'm in the midst of final exams, & will be soon sending out numerous resumes & job applications. Any managing editors in the Club? How about a line (hi). Anyway, I've done a little SSS DX (my favorite time to DX) & also a bit on MM 12/8. Here's what I heard, still using my aged Panasonic 4-1597 portable. I keep planning to get a new one, but I keep on procrastinating or spending my \$\$\$ elsewhere. Here's the DX: ,, 12/8- WANS-1280 heard briefly as the announcer mentioned it was on the air for a test @ 2:27am. At 2:37, tentative KXYZ-1320, as I heard "KX--" well enough. Station was mixing rr with another one, which quickly faded. I stuck it out till 3, but by then both stations were pretty far gone. SSS- WLOU-1350 heard well @ 5 w/NX & a "cash call" to "someone in S. Indiana." Let's all hear it for So. Ind. - my past and perhaps my future home! Now that all the ruckus has died down, moving on to 5:20pm, & tentative WGSW-1350, as ads for Greenwood were heard somewhat weakly through un WXL-1350. No sign of WIOU, which is usually readable here at this time. 12/11 SSS- KMPL-1520 blasting in w.brutal rr @ 5 - though un, this was quite a shock. They were stronger than WLAC & WCKY. WKDC-1530 was heard s/off @ 5:15 - though only 15 miles away, they are almost impossible to hear. 5:34, WTRU-1600 heard u/fair KATZ signal, w/a long & comprehensive sportscast & then mentions of Muskegon. That's it for now - more to report soon as I dx from Jersey over Christmas vacation. 73s to all - & special mention to the LADS Hopefully I'll make it to LOUISVILLE next year, especially if I am living in Evansville.

JEFF ROBERTS - 945 East Moore - Decatur, Illinois - 62521

Lots to report since I've heard 56 new stations since my last Musing in October. Great TA opening here 10/23-28 - lots of carriers, but only definite new log was Monaco-1466. 10/27- CFUN-1410 B.C. lopping NW w/rr 2:14am, new province. SSS, KNDY-1570 Kans. very weak w/s/off @ 6:45pm. 10/30- KLOE-730 Kans. weak w/c/w @ 6:48pm. KRGO-1550 Salt Lake City atop briefly w/great ID @ 7:45pm, one of my best SSS catches ever. November seems to have more than its share of Auroral CX MM 11/3 was a good example. KNUJ-860 Minn. TEST heard very weakly here. 11/8- KBWD-1380 Tex. atop briefly w/rr @ 6:47pm & has been heard several times since. 11/12- KMUS-1380 Okla. up briefly w/mentions of Muskogee & c/w, @ 6:19pm. 11/14- KLOV-1570 Colo. all alone w/ID @ 6:30pm, un. MM 11/17 was good. R. Reloj-700 Costa Rica was on top of the frequency @ 2:35am w/WLW off. WEXY-1520 Fla. TEST was excellent @ 3:39am w/TT, IDs, & mention of the NRC noted. Highlight of the morning was R. National-854 Lima, Peru which was in/out a good part of the morning with light SS mx, ID @ 5:19am. 11/19 SRS- WPTL-920 N.C. weak @ 6:25 w/c/w. WKIX-850 N.C. crushing KOA w/rr @ 6:47am. SSS- KTJS-1420 Okla. great signal w NX, WX & ID 6:25-6:30pm & heard several times since. MM 11/24- I tried for KSIR-1470 Colo. TEST, but nuthin' heard. WSJS-600 N.C. pop-pedin @ 3:19 w/an ID on ET. 11/25- KAJN-1560 La. strong w/state NX @ 6 pm. Good LA CX the eve of 11/26. Best log was R. Melodia-735 Quito, Ecuador w/light mx & ID @ 11:04pm, country #21. 11/27-"C. R. Lighthouse"-1165 Antigua weak to fair from 8:45pm, s/off, religion format noted, country #22. MM 12/1- KSSS-740 Colo. nice surprise on ET w/TT & ID @ 3:12am. Strong R. Vision-650 alone w/ads & SID @ 4:10am. 4VEH-1035 Haiti very good w/religion in EE @ 6:45pm, country #23. MM 12/8- WTOB-1380 N.C. gave everyone waiting for the WNRI TEST a bonus w/their own ET, ID @ 3:05. WNRI was very weak here, but definite ID heard @ 3:13, & Morse Code IDs, R.I. #1 heard for me. 12/9- Good TA opening w/nice audio from TWR-1466, Nice-1554, & WDR-1586. Many strong carriers also. 73s. NOW, BACK TO WEEKLY UNTIL ONE SKIP THE WEEK OF FEBRUARY 10. WE WANT YOUR MUSINGS & YOUR VERIE SIGNERS IN PROVINCETOWN - DEADLINE, THURSDAY.

JEFF KADET - 816 Easley Street - #1401 - Silver Spring, Maryland - 20910

This Musing is prompted in part to wish all my old DXing friends Season's Greetings & a prosperous 1976. Frank Merrill is visiting & my DXing juices always start flowing whenever we get together. Remember MM 3/16/66, ERC? That was the one when there was fantastic Aurora & Castro had every station on the island on until almost 3am with his anti-China speech & there were SS & Fla. stations on just about every channel including the graveyarders. That's Frank's and my most memorable MM of the decade. I am thinking of backpacking around Europe & maybe beyond for a few months beginning this March & settling elsewhere in the U.S. where the DXing CX & air pollution are better than in the Nation's Capital. Any DXers out there interested in leaving it all behind & romping around Europe & maybe further for a spell? How about writing? 73 to all for now. (Hi, Jeff - welcome back, but I don't remember that particular MM you mention - maybe it was "before my time" -hi -ERC)

[FORMER MEMBER - RTÉ]

JEFF KLEPPINGER - 502 East 2 Street - Northampton, Pennsylvania - 18067

Well it's about time for another Musing. Following stations from 9/29 to 12/9: WIOD-610, WNVA-1350, R. Belize-834, CJRN-710 VMJN-730, WHOM-1480, WHNC-890, WMM-1590, CMHI-570, WHYU-890, WRAW-1340, (finally), WVQJ-1320, WPRJ-1310, & WCHE-1520. My SM-2 really has it over the LW when it comes to locals. Beginning 1/1/76, WHP-580 in Harrisburg will go 24 hours, maybe an MM SP. I can't get them nights here so it won't affect me. WHOL plans to increase to 2,500w on 1600k. A third tower would be added if this goes through. This will be my last Muse for a few months. On 1/5, I go for basic training in the Coast Guard in Cape May, N.J. Then to Petaluma, Cal. for Radioman School (21 weeks). Could anyone in the area inform me of DX CX there? My total logging is 353 from 35 states. Local WKAP-1320 now has 20-20 NX (20 minutes before the hour) but not every hour. On Sunday nights between 9 & midnight is 41 NX on the hour during their "Open Mike". 73s to all & good DX.

MARK CONNELLY - 47 Lakewood Drive - Sudbury, Massachusetts - 01776

Hello again. First, thanks to Dario Monferini for debugging my tentative Ireland-566 reception, guess I just had the German. I can't understand why Ireland is so hard to get when England-647 bombs in at potent ovels, frequency atop WSM/YVLH-650. Re 818 Poland vs. Italy w/ Morocco, I didn't get much of value on tape, nothing that could be useful in deciding what I had. TAs have picked up here in the early AM hours. BBC-1214 & Langenberg-1586 at cruncher levels on MM 12/14, along w/many others (See DXAD for details) I've recently acquired 2,000 (600m) of beverage wire from Gordon Nelson, to be installed at Sudbury Pine Swamp for steerable-cardioid pattern phases-beverage operation. I've often wondered about daytime reception in the Cape Hatteras area; therefore Mike Levintow's study was very interesting. Any place where WBZ, WGN, & Cuba are all audible on groundwave is a tremendous location! I've made similar studies from the SW tip of Nova Scotia, Cape Cod, Cape Ann, Montauk Point, L.I., the Atlantic City area, & several other sites. I did not, however, have a loop antenna. I suspect WGTR as the possible unID Mike lists on 1060, as they were heard well at Montauk Point. Cape Cod stations WOCB-1240 & WVLC-1170 should be possible there, too! both were good at Montauk & in N.S. I'm tempted to send my Shag Harbour/Clark's Harbour, N.S. daytime DX in as Mike did w/N.C. I've often wondered about TA DX along the NE coast of SA, particularly N. Brazil. I suspect good consant propagation, possibly enhanced by Auroras. Dakar-764 must hit Fortaleza, Brazil "like a rocket sled on rails", similarly Surinam-725 must dump into Senegal at pestilential levels. Good reception of E. NA, the Caribbean, & Europe as well as spectacular African reception are likely on Brazil's N coast. Has any travelling DXer w/good equipment ever researched this? Another location of interest is the S tip of Greenland, during low auroral activity. It seems NA, SA, Europe & N Africa could all dump potent signals into there at the same time. The Azores are yet another area w/outstanding DX possibilities. Now I wish to confer my Insipidity Award for 1975: it goes to the Jepko Nitecap Show. Its retarded themsong has got to be the worst atrocity ever perpetrated on the public. Its talk content is banal & plastic, a marked contrast from truly interesting shows as Larry Glick of WBZ. Happy New Year, 1976!73.

JEFF FALCONER - Clinton, Ontario

Hello people. It's been quite some time since yours truly has appeared in these pages, mainly due to the Canadian P.C.'s strike. Now the strike is over I plan to Muse frequently. Great DX so far this season w/CX being mainly Auroral in nature, w/some good TA openings noted. 10/2- TAs in quite well; France-863, BBC-908, France-944, DDR-1043, SWF-1016, Portugal-1034, BBC-1088 all in w/good audio, all new here as well. 10/6- WVCH-740 in w/TEST, 11:0am after CBL s/off. 7pm, a log taken on new Antigua outlet on 1165. 11/12, a new RX arrived here, a Colling 51J-4, purchased from Fair Radio Sales. I am very pleased with it so far, but haven't had much chance to seriously chase DX with it as yet. DX w/new RX: 11/14- W00G-1560 (1320? -ERC) w/s/off in mess @ 5:30 pm. 11/16- WGVA-1240 on top w/s/off, lam. WKK5-1570 ID @ 6:08am. 11/22 - WARR-1520 clobbering frequency w/R&B @ 4pm. WLAS-910 in w/NX o/WDFD/CKLY @ 4:30. 11/23- WGAD-1350 u/o WSLR w/rr, 5pm. WSAO-1550 o/CBE w/WX. @ 5:55pm. 11/24- WENY-1230 on top w/rr @ 1:03am. WCVS-1450 strong on r/c 1:35am. Several others heard but have been mentioned in IDXD or DXDD, so I won't mention them here. 73 for now & I hope everyone has a Merry Christmas. 73.

HARRY J. HAYES - Star Route - Box 226C - Gouldsboro, Penna. - 18424

CX these past two weeks have been very good, although I haven't spent that much time at the dials. 12/6- 12:13am WBKC-1560 Chardon, O. heard testing w/rr & two cracked-up DJs who were really carrying on. A verie from test was received last week. I noted station still testing around 3am except the DJs went to bed. 2:25, WIRV-1550 Ky. w/excellent signal & Barry White mx, IDs given three times each ID period. 12/7- 5pm, WEET-1320 Va. good signal. 12/9- 3:45pm WQSE-1380 N.C. in w/fair steady signal w/soul & MB NX 12/10- 4:37pm, WOMP-1290 C. loud w/rr. 5pm, unID s/off on 910 at this time, very strong, only call given which sounded like WBEL or WBDL. Closest thing is WAVL Pa. 6pm, WCSH-970 Me. weak steady signal w/MNIS. 12/14- 7:54pm YVOZ-1200 Venezuela, R. Tiempo in/out w/good signal, mxing w/Cuban Reloj outfit. 12/15- WKRT-920 N.Y. in @ 4:28pm w/MoR. 12/18- 2:10am, WYSL-1400 N.Y. in fair w/rr. 1:56pm, WSYB-1380 Vt. w/weak readable signal. 4:45pm, WIOO Pa. s/off w/promo to stay tuned for "more hit music on WCFL Chicago." 4:50pm, WKDE-1000 Va. 4:54, WBTE-990 Windsor, N.C. in w/good signal & c/w. 5:15, WPMO-860 N.C. s/off heard weakly. 12/19- 4:30pm WIZR-930 N.Y. in w/sports, difficult through semi-local WCNR. 4:45, WARC-540 Pa. nice signal w/progressive rr. That's it till next time - Keep up the Mothball Memories, Ernie! (Thanks, Harry - will do! -ERC)

STEVEN C. WISEBLOOD * 707 Loma Way - Santa Maria, California - 93454

I haven't noted any TP DX since early November, perhaps due to Sunspots or geomagnetic activity? Normally, this is the best time of theyear for TP DX. If CX had been good enough I may have even been able to log my first TA station, but no luck yet. I am trying out various nulling techniques on local radio stations, & have been highly successful. DX noted since 12/12 includes KTIIP-1450 w/KUHL notched out @ 7:13pm 12/12. Other DX on 12/12 includes: KGFJ-1230 w/soul mx w/KSMA notched out @ 7:33pm. KLIP-1220 s/off @ 7:45 w/ID. KKAR-1220 s/off right after KLIP s/off. KBON-1240 w/NEC NX & ID o/KSMA null @ 8pm. KOAD-1240 w/ID, soul @ 8:26pm. 12/17- 6:17pm, KRGO-1550, booming in w/c/w. KSOP-1370 w/TC, IDs, K-Sop @ 6:25. 12/18- KWAC-1490 w/SS & ID as R. Variedades, w/ads for Bakersfield. This was in KSEE-1480 null @ 6:14pm. I also noted in KSEE null KDB-1490 fading in/out w/EL. Harmonics from the TV Sweep frequency (15.75k) are quite noticeable here during the daytime, making almost every frequency impossible to DX. Near SSS the problem disappears to some extent. I plan to get my thirdclass license sometime next year, & my first class license in '77. Perhaps I will make it as a DJ. Of course it would mean having to project my voice for three-four hours. The DJs down at KCBQ & KIQQ-FM in Los Angeles have been noted with the voice projection technique. It is mostly noted only on Top-40 rr stations, NEVER on progressive rock. More next time, until then, 73s.

AS THEY SAY IN ELKIN, N.C., "WIFM." "WONDERFUL ISSUE FOR MUSINGS!"

BRUCE REYNOLDS - Route 2 - Warrensburg, Missouri - 64093
 DX: 11/17 featured a very strong evening Aurora. KOLE 1340 5:56pm w/NX, then rr; WQPD-1430 all alone w/rr 6:38pm, then one of my best graveyard catches, KBMY-1240 Billings o/KWOS @ 7:55pm w/c/w & N. I couldn't figure out how the heck I got this one until Skip D. reminded me of the "donut" Auroral effect GPN expounded upon a few years back. 11/18- KCAD-1560 6:35-6:45pm s/off w/c/w. 11/21- WENN-1320 5:45pm s/off. KOCA-1240 atop 6:34pm w/FB interviews. 11/22- KADI-1320 s/off 5:44pm, folo by WNGO s/off. MM 11/24- KSIR-TEST got three IDs through the XES & CFRW. By the way, the Tijuana station had an EE spot, but SS otherwise. WNMT-1520-TEST easy o/r Minuto. 11/30- KWOC-1320 6:29pm s/off-SBB. MM 12/1 was a washout; WTBJ not on & the GR-64 couldn't handle XERF well enough to let KWIP through. (HQ-160 is still sick). MM 12/8- KFGQ-1260 ETing w/religious mx u/KSPL which was running c/w, apparently ETing w/FM's audio; had ads & all. WIVY-1280-TEST got three IDs through WSGO & WGBF. WNRI-1380-TEST made it OK on CW, but nothing else - state #48 (Vt. & Alaska needed), thanks Skip! WMTY-1090-TEST u/KAAAY OG & buzz. MM 12/15- WWSN-1240-TEST through on CW IDs & two voice IDs. WRAM-1330 u/KFH 2:06am. HOL82-1090 Panama 3am. WKLF-980-TEST 3:14am thanks to KMBZ who cut off their ET just in time! KXRB-1000-TEST in fair 3:17. Veries are extremely slow, v/l- KIRK, DBRL KADI WNGO WKIG KOLE KBMY KSIR. v/q- KJJJ. v/f- WAMI v/r- KHMO WMTY. I hope everyone had a good Christmas & much good DX to y'all in '76! *that reception is not donut hole!!
 Wrong geography - Sri - RjE.

KARL FORTH - 630 South Ardmore - Villa Park, Illinois - 60181
 Greetings. All four IRCA TESTS for MM 12/15 were on, & all were heard here but WKTJ, which just couldn't cut through the QRM. WCFL was ETing w/a dummy load when KXRB came on, but a call to the XR & they agreed to quit from 3:09 to 3:24am EST. I'd be interested to hear how far WCFL got out on this arrangement. SSS DS for December: 12/2- WMES-1570 & WLOV-1370 s/off @ 5:30 & 5:31. 12/4- WWSN-1360 @ 5:31 w/ID and spots, KBOK-1310 w/Ark. radio net NX, then s/off @ 6. KWBC-1550 s/off @ 6:29 & then KBAN-1410 w/s/off @ 6:30. 12/14 brought KOYY-1360 w/s/off @ 6:01. MM 12/1- WYSH-1380 on ET @ 1:21am. MM 12/8 WNRI-1380-TEST w/surprisingly good signal w/CW, rr, & even vnoce IDs heard. WMTY-1090 @ 3:53 w/ID u/KAAAY ET. MM 12/15- WDLN-960, WWSN-1240, WRAM-1330 & KXRB-1000 TESTS all heard. (WWSN was not IRCA, Karl - 'twas NRC only -ERC) WKLF was not heard but I was told they were on. WDLN & WRAM receptions leave only 14 to be heard from Ill. Totals now stand at 1,674/892/831 (heard/verified/taped), stations, 48/48 states, & 9/9 provinces, & 30/19 countries. The few veries back so far this season include v/qs from WKIS-740 & KUOM-770, v/l from KBOK-1310 & v/rs from WWSN-1360 WYSH-1380 and KYSN-1460. I'm looking forward to seeing you all in LOUISVILLE next Summer, & at my get-together some time in February (some of you anyway). Happy Holidays and a Good 1976 to all.

CHARLES A. WOLFF - 4911 Proctor Road - Castro Valley, Calif. - 94546
 MM 12/8 was a wipeout, w/CX mediocre to the S & rotten everywhere else. Only DX was YNX-750 w/"La X" IDB. This from 4 1/2 hours of DXing. Things got better the next weekend, however: 12/13- 1-1:23am, WCAU in for a report. 1:43-2, WCBS. Both these have been tough for me; 880 has a low rumbling het on it, plus occasionally a KCBS image; 1210 has an occasional KDIA image, or just lots of static. MM 12/15, a report taken on XERF, plus the KXRB-1000-S.D. TEST & the KLUC-1140 Nev. TEST were both heard & reported; KLUC has been heard u/KRAK, but never for a report. To other things: There's a possibility of TWO(count 'em) WC Conventions next Summer, & miracle of miracles, they'll be within a week of each other. A group from Portland has bit for WTFDA, & apparently has a good chance of getting it, & Bay Area Radio Freaks have bid for IRCA. Both of us are looking at early August, & I've been in touch with the guy who's bidding for WTFDA, & we'll be working out our skeds. Next BARF DXGT will probably be in April, & I promise to do a better publicity job on this one. SCADS may go Presidents' Day in Feb., but no decisions from them yet. Thanks to Mike Maloney for his tips on improving the Wedge. Anybody who's built one & has complaints/praise/money/questions to give me, feel free to write. WC NRCers, MUSE! Or Capt. Glotz'll getcha! 73.

M O T H B A L L M E M O R I E S
 CHAPTER X - A TOUR OF BEAUTIFUL, DOWNTOWN PITTSBURGH - Part 1.

-by BEN DANGERFIELD

Back in those nostalgic 30s, there were only several hundred AM stations in the U.S.A. & Canada, and outside of the largest cities - like New York, Chicago, Philadelphia & Los Angeles, most of the big cities had just four to six locals. Pittsburgh, until after World War II, had five stations: KDKA, WCAE, WJAS, KQV, & WWSW. Among the Pittsburgh locals, KDKA has always been the most famous. Then, as now, KDKA was 50kw, but the frequency was 980, changing to 1020 in the 1941 reallocation. KDKA was NBC's Blue Network outlet for Pittsburgh, & the only station in town to really go in for live, local programming. Until the late 30s, their XR was at Saxonburg, about 25 miles N of the city, & fading was common at night. KDKA then had an SW parallel, W8XK, & perhaps the most far-reaching program sent out by these stations was "Messages to the Far North" which was broadcast from late Saturday night to early in the morning. WCAE-1220 (later 1250) used only 1,000w for many years, yet saturated the city with signal strength from their XR just across the Monongahela River. WCAE carried the popular NBC Red programs, as well as Mutual, & was probably the most listened-to station in town. And they didn't s/off until 2 a.m.! WJAS-1290 (later 1320) was the local CBS outlet, & shared an XR on the S side with sister station KQV. At night, at 1,000 w, the WJAS signal was a little weak, & one could often hear, with verifiable clarity - NBC programs from WEBC, Duluth, also on 1290k. Once, WJAS got into the doghouse with the three Pittsburgh newspapers by getting their NX from an outfit called Transradio News, instead of from the papers & their news services, so for several years these newspapers, in their radio columns, would not put any WJAS programs into the "Tonight's Best Bets" section, even though some of the great shows from radio's golden days were on CBS. Under the same ownership was KQV-1380 (now 1410), 500w. The two stations shared studios as well as XRs. KQV also shared time on 1380 with 200w WSMK, Dayton, Ohio during evening hours. In the Winter, KQV was on at night only from 7:30 to 10, & in the Summer went straight through to 10pm. Funny thing though, when KQV signed off in favor of WSMK, it was WAAA, Mobile, that almost always boomed in!

ERNEST R. COOPER - The Cape Tip DXer - 5 Anthony St. - Provincetown, Mass.
 V/qs in from Milan-899 & WDLN-960-TEST; v/l, 7 02657 unsolicited, from WNRI-1380-TEST in reply to a thank-you card, WFTN-1240 plus data & CM, & v/r from WMTY-1090-TEST, very poor, as my letter was typed on buff paper with red type, which didn't Xerox very well - illegible, in fact. Now, DX: Sat. 12/13- The SS-1025 turns out to be ex-710 Ecos del Comelma, Colombia, umn. And, unID w/Jepko on 990 @ 2:37am! Unn WQMA atop 1320 @ 1:07, & WINZ-940 seemed silent today - all R. Eco. Mx then cricket news on 885, unn Montserrat, no doubt. That afternoon, a pleasant surprise on 1500 as WPNH pushed in u/semi-local WJDA for a report, 3:59-4:15pm s/off. SM 12/14- Unn WKER-1250 s/off-SBB @ 2:06. 2k38 unn semi-local WNET-1330 testing. MM 12/15- My WWSN-1240-TEST made it only on the CW IDs - how important they are, O'Fers! CFLS was on top of that spot. WDLN-960 tentative on TTs at various times, but they didn't use CW so no definite ID, but they verified my tentative, so 'twas they. WOR-710 off, WRDW-1480 atop - NN, 2:27. Unn WKTJ-1380-TEST weakish but these w/FM program of WKTJ-FM. An unID TA on 1295 @ 2:42am. WHAS off, & an SS there turned out to be only a "Hi-Fidel". On 710, SS w/ID as either R. Super or R. Sucre, & mentioned Colombia - whossis? An AN SS on 945 also, very weak on a non-AU morn. SM 12/21- Ugh- Wolfman Jack is on CKTS-900 till they s/off @ 2:03 GSQ! Tter on 990, N/S, unID 2:06 & on. On 1610a, CW station sending "R & B" over & over. Weak c/w on 1560, but the wicked slopover from CKLM killed chances for probable log on still-needed KAAA. MM 12/22- Tester on 1580 left air around 1:27 w/no announcing, & later, after 4, seemed to be back playing mx again - quite loud. Unn WDEE-1500 s/off-SBB @ 1:31, leaving a talk-talk station AN - is this KSTP? The SM-2 said it was N/S - could it be WKIZ, Rons S.? CFGO-1440 was off today. WCCP-TEST made it fairly well, but again, CKLM's slop was rugged. Then WKBW gave up the ghost around 3:35 & a log finally on Gary Siegel's WANR, AN-NNIS. Unn CFJR noted atop 1450 AN or on early, @ 4:30am w/NX. Repeat dIS heard on 740 4:22 o/u WJIS/CENM. Try next week!